

See Page 30

See Page 14

See Detail Map  
Page 67

See Page 32

See Page 36

**ROAD 870  
WIDTH = 60'**

119° 00' 00"

R31

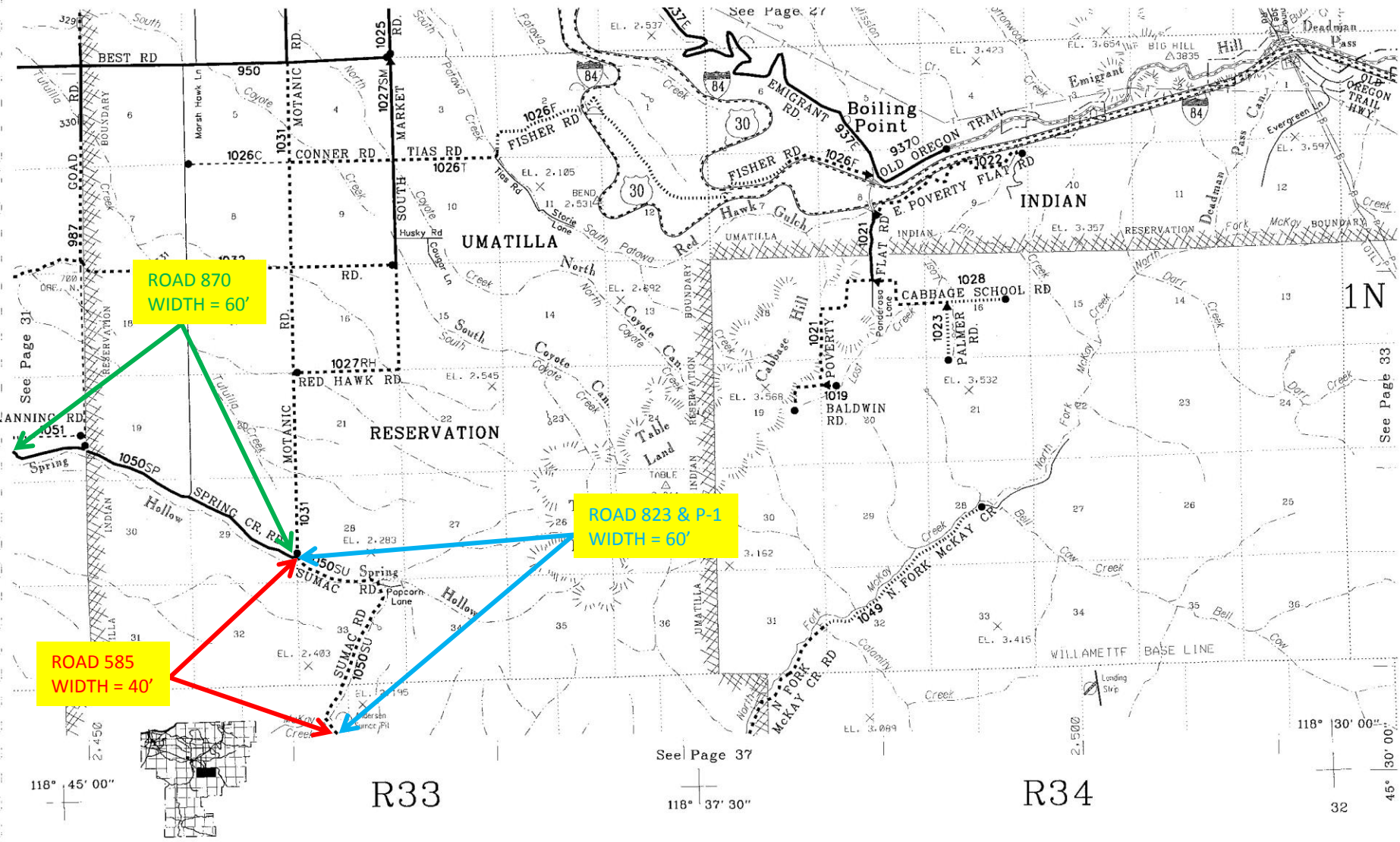
118° 52' 30"

R32

118° 45' 00"

31

45° 30' 00"



ROAD 870  
WIDTH = 60'

ROAD 823 & P-1  
WIDTH = 60'

ROAD 585  
WIDTH = 40'



118° 45' 00"

R33

See Page 37

118° 37' 30"

R34

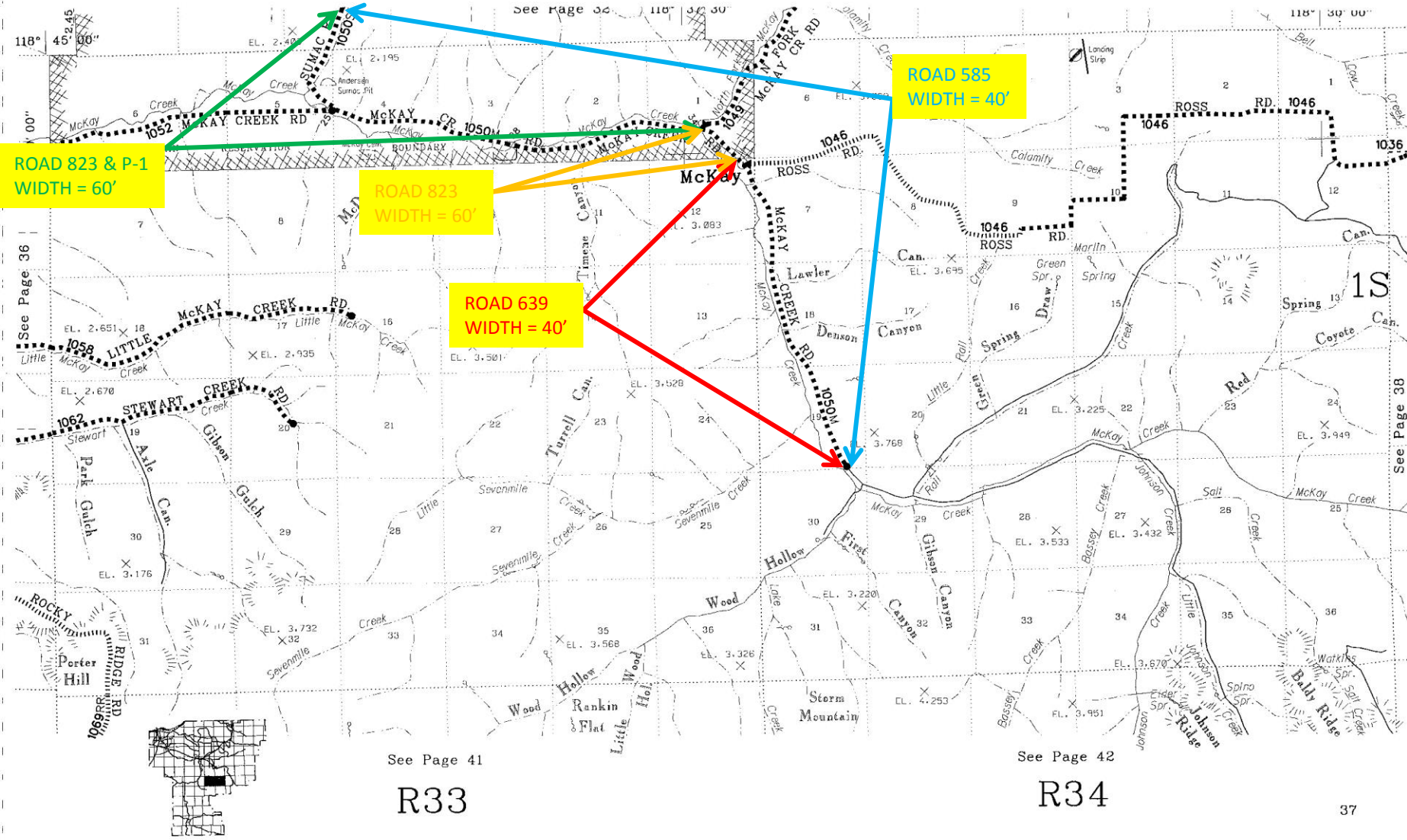
118° 30' 00"

32

45° 30' 00"

See Page 31

See Page 33



ROAD 823 & P-1  
WIDTH = 60'

ROAD 823  
WIDTH = 60'

ROAD 639  
WIDTH = 40'

ROAD 585  
WIDTH = 40'

See Page 41

R33

See Page 42

R34