

STANGIER HILLS
 AN ADDITION TO THE CITY OF PENDLETON, OREGON,
 LOCATED IN SEC. 3, T. 2 N., R. 32 E. W. M.
 SCALE: 1"=100'

George J. Stangier and W.E.O. Criger, Raley, Kilkenny & Raley
 Jack C. Stangier Engineer Attorneys for Dedicators
 Principal Dedicators.



STATE OF OREGON } s.s.
 County of Umatilla }
 This is to certify that the accompanying plat is hereby approved
 by resolution of the undersigned, duly adopted on January 23, 1950
 and report of said approval duly filed. Signed April 13, 1950
 CITY PLANNING COMMISSION OF THE CITY OF PENDLETON, OREGON.
 By Robert Mason President.
 By Walter E. Green Secretary.

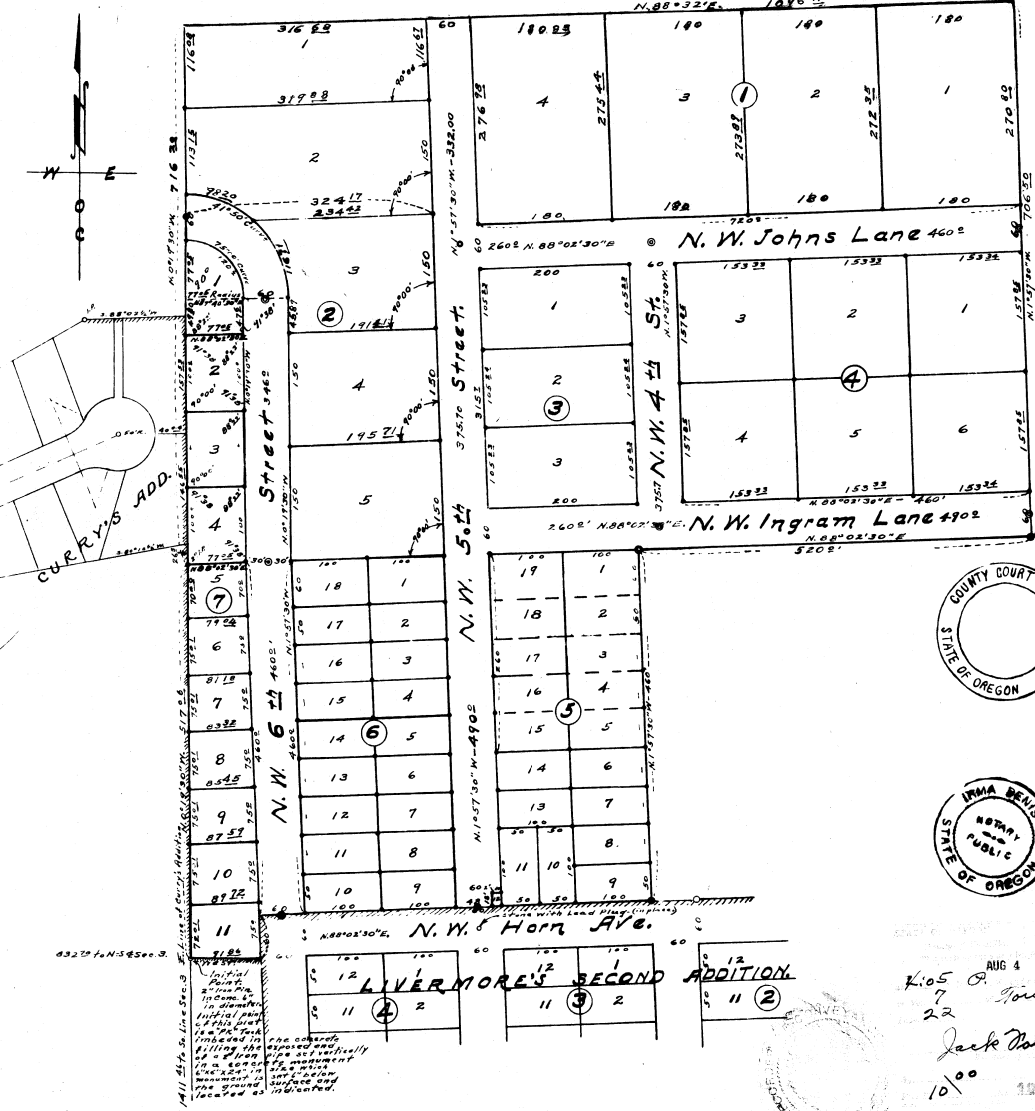
STATE OF OREGON } s.s.
 County of Umatilla }
 This is to certify that the accompanying Plat is approved
 for filing in the "Records of Town Plats" of Umatilla County, Oregon, by
 order Recorded in County Court Journal T, Page 161.
 DATED July 31, 1950.
 COUNTY COURT OF UMATILLA COUNTY, STATE OF OREGON.
 By Jesse H. Stump County Judge
 By Thomas E. Biamont County Commissioner
 By J. C. Olinow County Commissioner
 ATTEST: _____ County Clerk

STATE OF OREGON } s.s.
 County of Umatilla }
 I, Mr. E. B. Costel, County Clerk of Umatilla County, Oregon, do hereby certify
 that the same named and duly qualified, stated, sworn and sitting before me
 and Commission of said County to their office and of said Court.
 Dated July 31, 1950.
E. B. Costel County Clerk.

LEGEND -
 * Monument consisting of point marked by brass or brass in concrete slab which is placed in the
 soil and set at approximately the natural ground surface. (Cross-section of
 monument is approximately 4" x 4" x 4" with a hole 1/2" in diameter and
 marked by letter type of monument on top.)
 o Monument of galvanized iron pipe 1/2" and 3/4" long with boundary line of the plat affixed
 vertically in ground and so indicated on plat.
 * Monument consisting of iron rod size 1/2" x 24" w/ 1/2" x 1/2" x 24" long embedded
 vertically in ground and so indicated on plat.
 |||| Shaded lines to indicate or distinguish adjacent areas that are not included in
 this Plat, but are shown for purpose of orientation only.

STATE OF OREGON } s.s.
 County of Umatilla }
 I, W.E.O. Criger, being first duly sworn, depose and say:
 That I correctly surveyed and marked with proper monuments and indicated on this
 plat the same named and duly qualified, stated, sworn and sitting before me
 and Commission of said County to their office and of said Court.
 Dated April 22nd, 1950
W.E.O. Criger
 Registered Professional Engineer
 State of Oregon Reg. No. 1497.
 Subscribed and sworn to before me this 22 day of April 1950
Irma Benson
 Notary Public for Oregon
 My Commission Expires Aug 17, 1950

STATE OF OREGON } s.s.
 County of Umatilla }
 I, D.W. Davis and J. R. E. Good, respectively Assessor and the
 Sheriff of Umatilla County, Oregon, do hereby certify that I have examined
 the above plat and the land adjacent thereto and find that the same
 are correctly laid out, the land adjacent thereto and the same are
 due to be paid, and I have made and now are placed for purposes.
 Dated April 17, 1950
D.W. Davis Assessor
J. R. E. Good Sheriff



AUG 4 1950
 K105
 7
 22
 Jack Nelson
 10/00

