

**ROAD 86**  
WIDTH = 40'

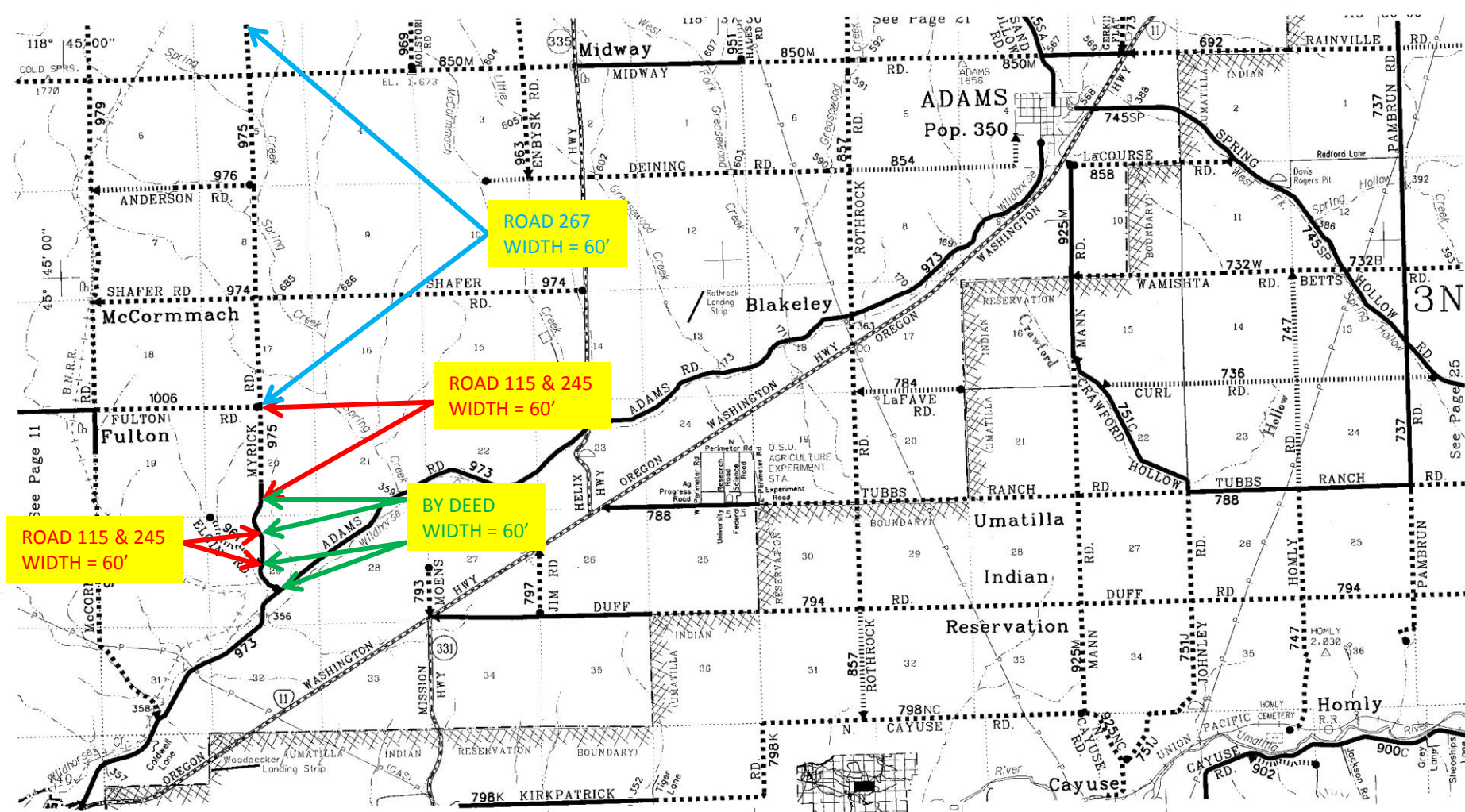
**ROAD 898**  
WIDTH = 60'

**ROAD 267**  
WIDTH = 60'

R33

See Page 24

R34



ROAD 115 & 245  
WIDTH = 60'

BY DEED  
WIDTH = 60'

ROAD 115 & 245  
WIDTH = 60'

ROAD 267  
WIDTH = 60'

R33

See Page 27

R34