

UMATILLA COUNTY ROAD DEPARTMENT
 GERMAN HALL-MYRICK MKT ROAD
 & My

NO. 50.

Prefix No. 30W50-A.

March-May 1930
 Scale 1"=400'

Approved.

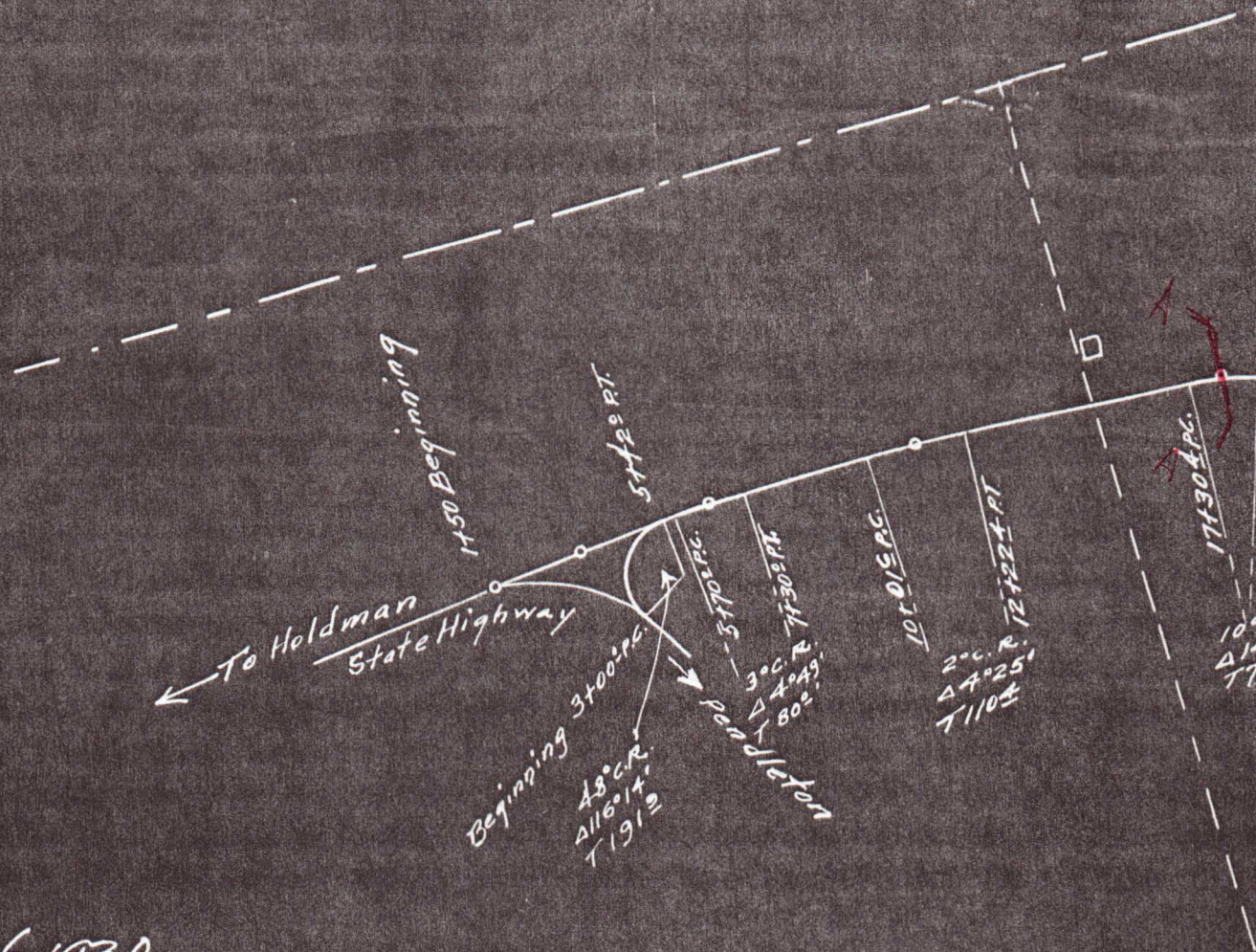
J. M. Schanney
 County Judge

J. W. ...
 Market Road
 Oregon St

A. E. ...
 Commissioner

...
 Commissioner

Surveyed By W. E. O. Griger & Ransom.
 Drafting By W. E. O. Griger



Filed Oct. 6, 1930
 R. T. Dacey
 Clerk

MENT
DAD.

Myrick-Reuther Corner. No 54

[Signature]
Road Engineer
State Highway Dept.



[Signature]

122

□ German Hall

48+862 Bridge
49+303

49+728 P.C.
50+608 P.T.

120 C.R.
Δ 15° 43'
T 659

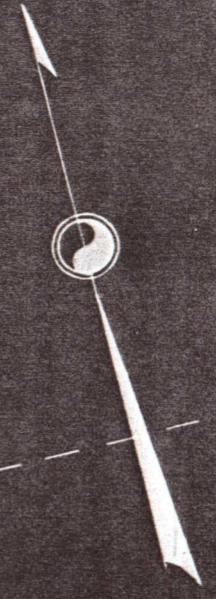
69+053 P.C.

4° C.L.
Δ 14° 37'
T 1932

72+701 P.T.

97+032 P.C.

6L
29'
42



2

971039 P.C.

981105 P.T.

4° C.R.
Δ 4° 16'
T 533

1001628 P.C.

6° C.R.
Δ 22° 48'
T 1926

1071128 P.T.

6° C.L.
Δ 10° 03'
T 843

1321229 P.C.

1331895 P.T.

1401165 P.C.

1711762 P.T.

10° C.R.
Δ 15° 57'
T 803

3

4

6

1401165 P.C.
1711769 P.T.
10° C.R.
Δ 15° 57'
T 803'

1681679 P.C.
1701462 P.T.
10° C.L.
Δ 10° 00'
T 896'

1831265 P.C.
1851944 P.T.
4° C.L.
Δ 10° 43'
T 1344'

1901996 P.C.
1921742 P.T.
10° C.L.
Δ 17° 30'
T 882'

23/24

10° CL.
Δ 17° 30' L
T 88 2

190 + 99.6 RC
192 + 74.5 PT.

TOWNSHIP 4N.32E.W.M.

TOWNSHIP 4N.33E.W.M.

TOWNSHIP 4N.40° E. W.M.

24 19
25 30

237 + 018 P.I. Δ 0° 12' LT.

237 + 018 P1.40°12'4"

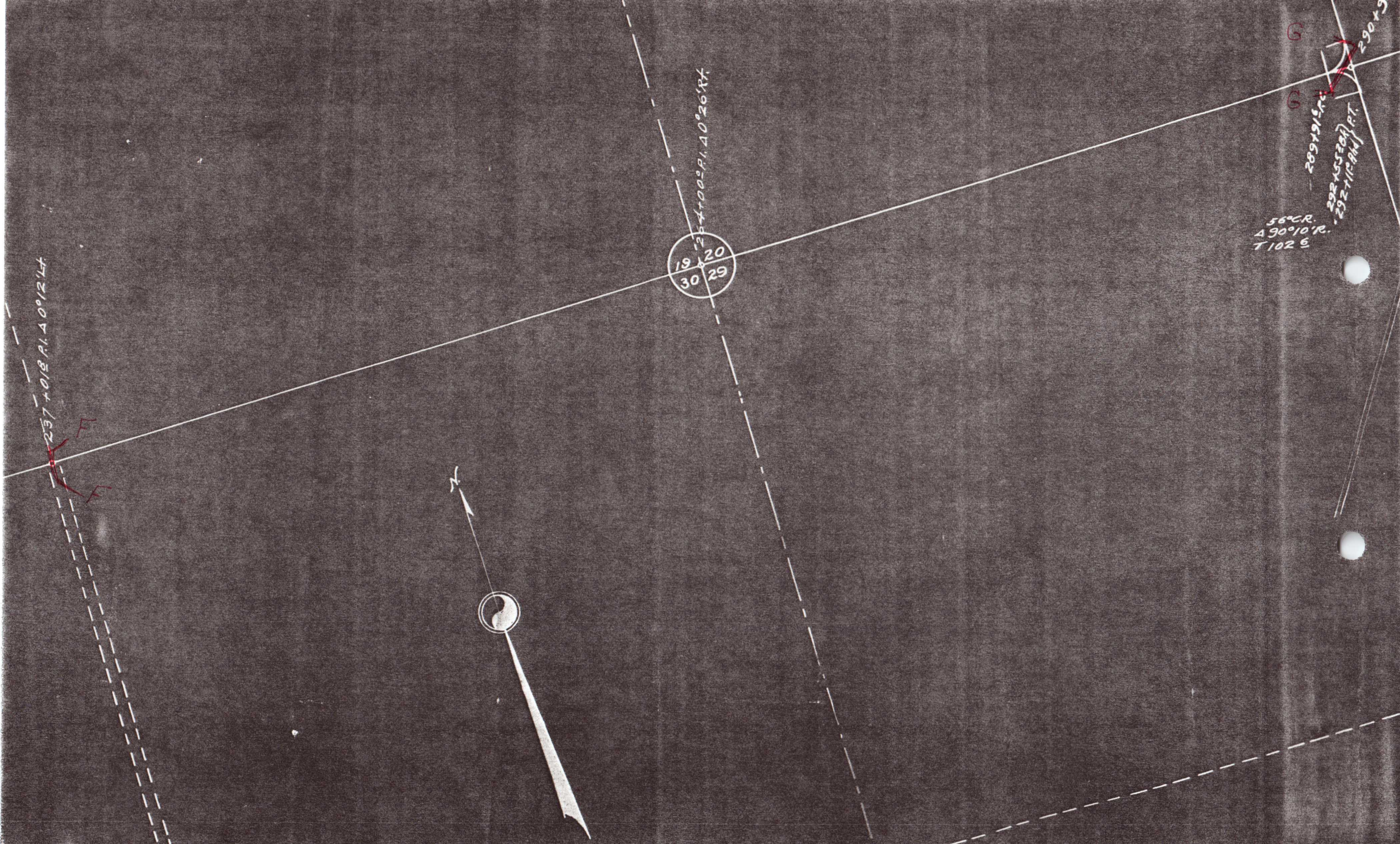
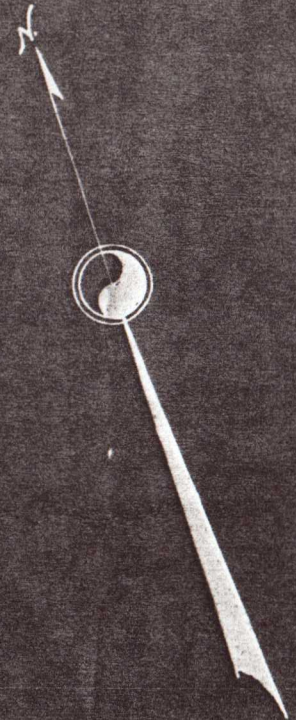
19 20
30 29

254 + 000 P1.40°26'4"

56°CR.
490°10'R.
T102 S

289 + 915 P1.
292 + 553 P1.
292 + 711 P1.

290 + 9



Myrick

German Hall-Myrick #50 ends at Stn 2
Myrick- Reuther Corner #54 begins
Road South from Stn 290+94
a market road

56° C.R.
Δ 90° 10' R.
T 102 S

289+91 S.C.
292+55 S.B.P.
292+115 P.T.

290+94

295+96

299+10° P.O.T. & Track.

316-59 S.P.I. Δ 0° 12' Lt.

Corner

Reuther Corner Market Road #4

and
Reuther Corner Market Road #4

begin
German Hall Mkt Rd #37

40° C.L.
Δ 90° 05'
T 143 S

342+44 S.C.
346+133 B.P.
345+513 P.T.

40° C.L.
Δ 90° 05'
T1433

342+44.4 PC
346+133 BK } P.T.
345+513 End

369+57° R. Δ 0° 42' Lt

388+00 = End County Road

