

See Page 11

FROM STATE
WIDTH = 60' (?)

ROAD 245 = 60'

FROM STATE
WIDTH = 60' (?)

PENDLETON
Pop. 16,612
(COUNTY SEAT)
ROAD 374 = 40'
See Detail maps

R31

R32

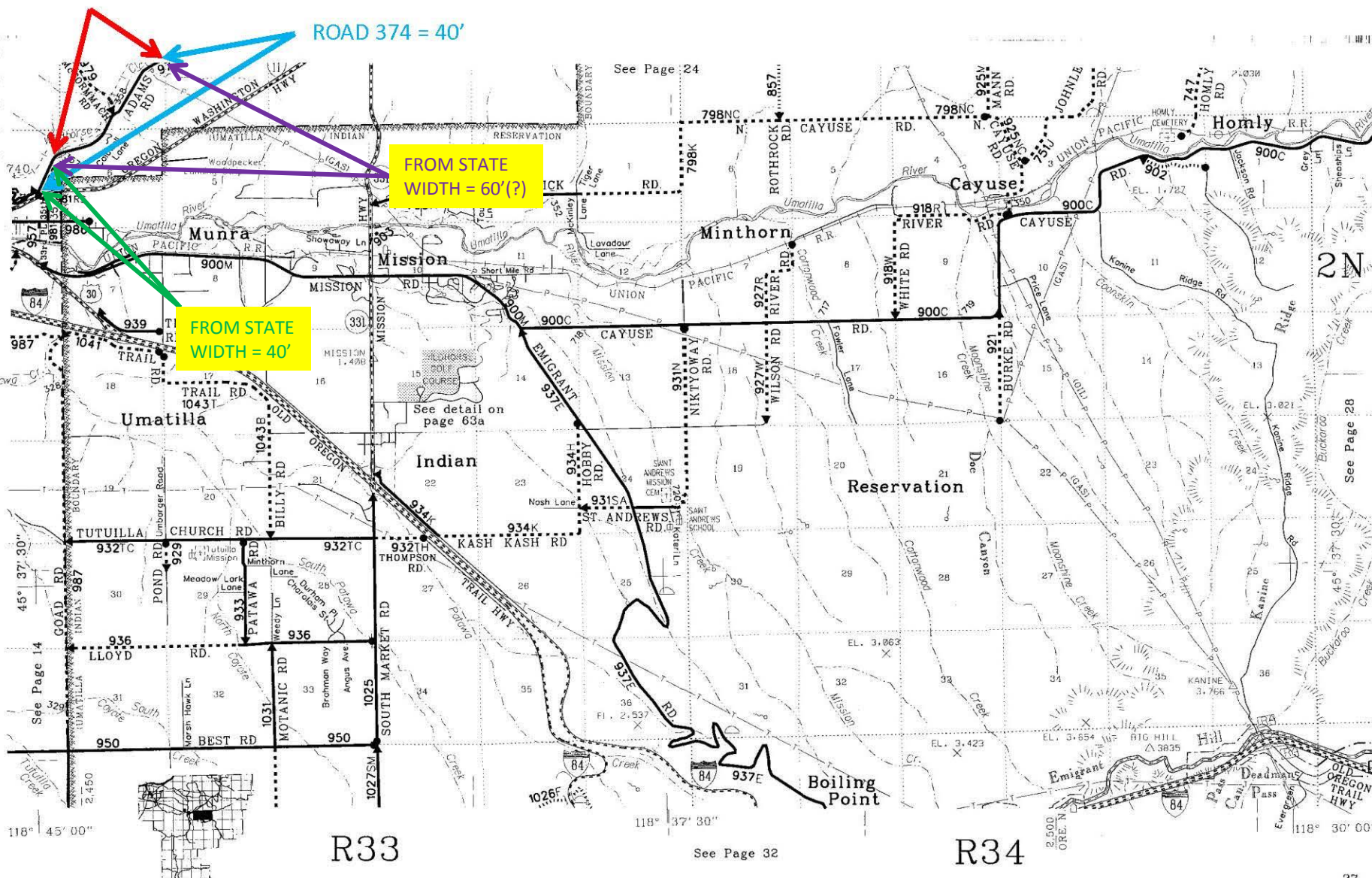
See Page 31

ROAD 245 = 60'

ROAD 374 = 40'

FROM STATE WIDTH = 60' (?)

FROM STATE WIDTH = 40'



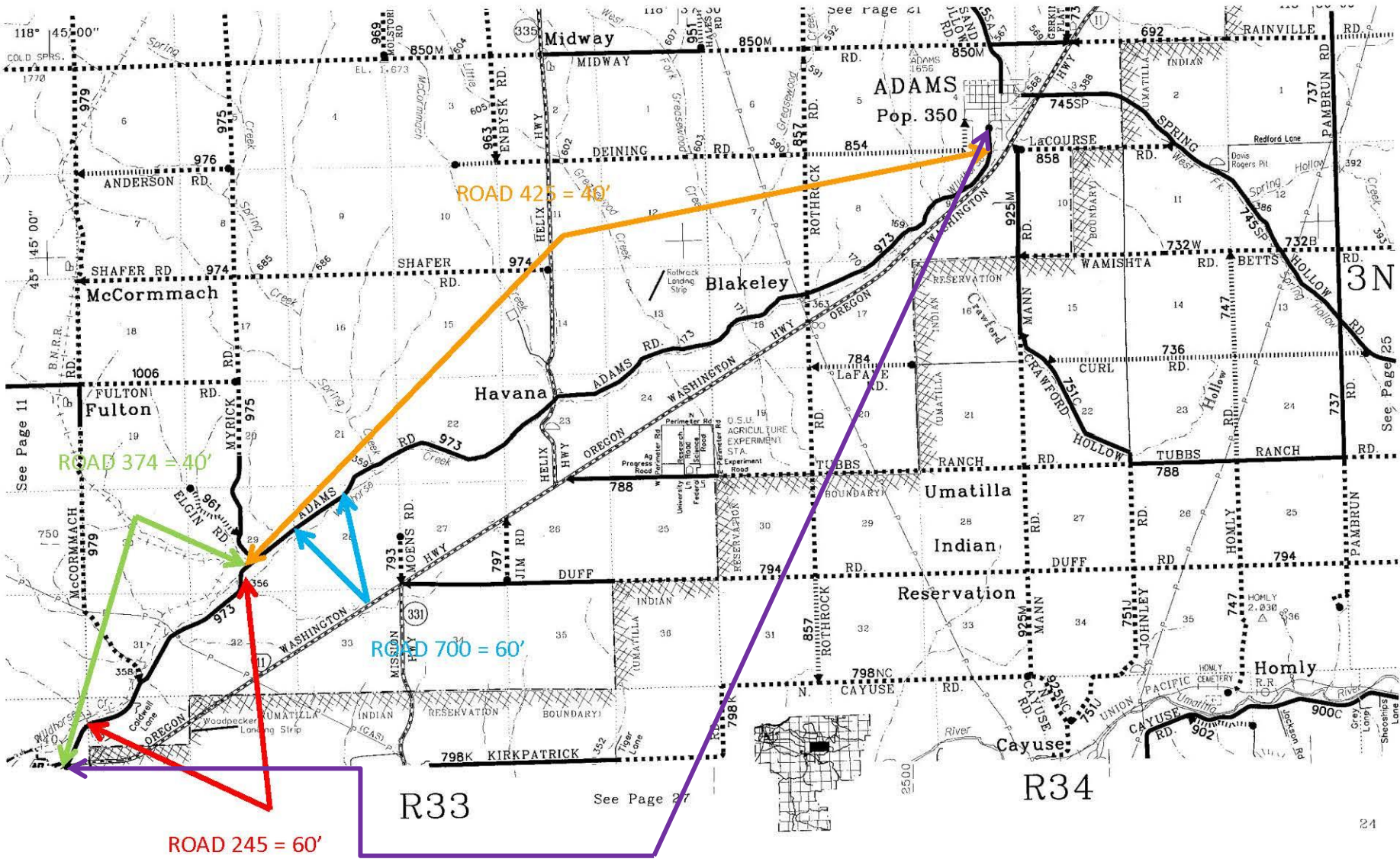
See Page 24

See detail on page 63a

See Page 28

See Page 14

See Page 32



See Page 11

See Page 27

See Page 25