



United States
Department of
Agriculture



Umatilla
National
Forest

*County
Copy*

ve.
B01

Date April 25, 1985

┌

Umatilla County Board of Commissioners
Attn: Daryl Harper, Director of Public Works
Umatilla County Court House
Pendleton, OR 97801

└

Dear Commissioners:

This letter is to confirm the tentative agreements reached April 10, 1985, by Daryl Harper, Public Works Director and Roy Thurman, Assistant Road Master representing Umatilla County and Phillip Ballard, Forest Engineer representing the Umatilla National Forest.

Umatilla County will vacate the following segments of County Roads on National Forest land on which the United States will take over all jurisdiction and maintenance:

1. Umatilla County Road 1428 (Forest Roads 5308 and 5308040), from the point where the road crosses the east line of the W1/2SW1/4, Section 24, T.4S., R.30E., W.M., to the point where the road crosses the North line of Section 21, T.4S., R.30E., W.M. (approximately 3.9 miles).
2. Umatilla County Road 1405 (Forest Road 5420), from the point where the road crosses the North line of Section 36, T.3E., R.31E., W.M., to its end in Section 36, T.3E., R.31E., W.M. (approximately 0.3 miles).
3. Umatilla County Road 1419 (Forest Roads 5420 and 5412), from its beginning in Section 36, T.3S., R.31E., W.M., to the point where the road crosses the West line of Section 6, T.4S., R.32E., W.M. (approximately 2.3 miles).

The Umatilla National Forest will transfer to Umatilla County the Right-of-Way Easements acquired by the United States for the following roads on which the county will take over jurisdiction and maintenance:



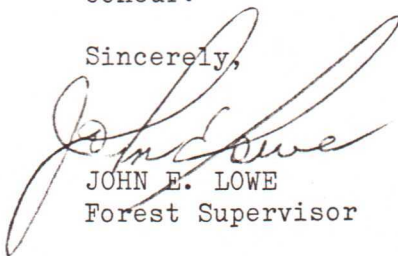
1. Forest Road 5415 (no county number) from its junction with Umatilla County Road 1405 in Section 24, T.3S., R.31E., W.M., to the point where the road crosses the east line of the NE1/4NE1/4, Section 25, T.3S., R.31E., W.M. (approximately 0.8 miles).
2. Forest Road 32 (Umatilla County Road 900) beginning at a point approximately 1,100 feet South 27° East of the Section corner common to Sections 7, 8, 17 and 18 T.3N., R.37E., W.M., and ending where the road crosses the South line of the SE1/4SW1/4, Section 16, T.3N., R.37E., W.M. (approximately 1.8 miles).

Umatilla County and the Umatilla National Forest will enter into a project agreement under the Forest Development Cooperative Agreement dated July 30, 1975, to allow the Forest Service to do betterment work on portions of County Roads 1405 and 1419 (Forest Road 5420) at Forest Service expense, prior to the transfer of jurisdiction to the United States.

Enclosed are maps showing the location of the roads listed above and a blank U.S. Department of Agriculture Easement, which would be the document used to transfer the rights of the United States to Umatilla County.


Also enclosed is an extra copy of this letter for your signatures if you concur.

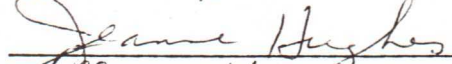
Sincerely,

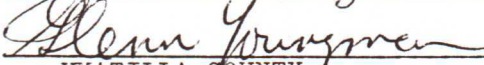

 JOHN E. LOWE
 Forest Supervisor

Enclosure

5/3/85



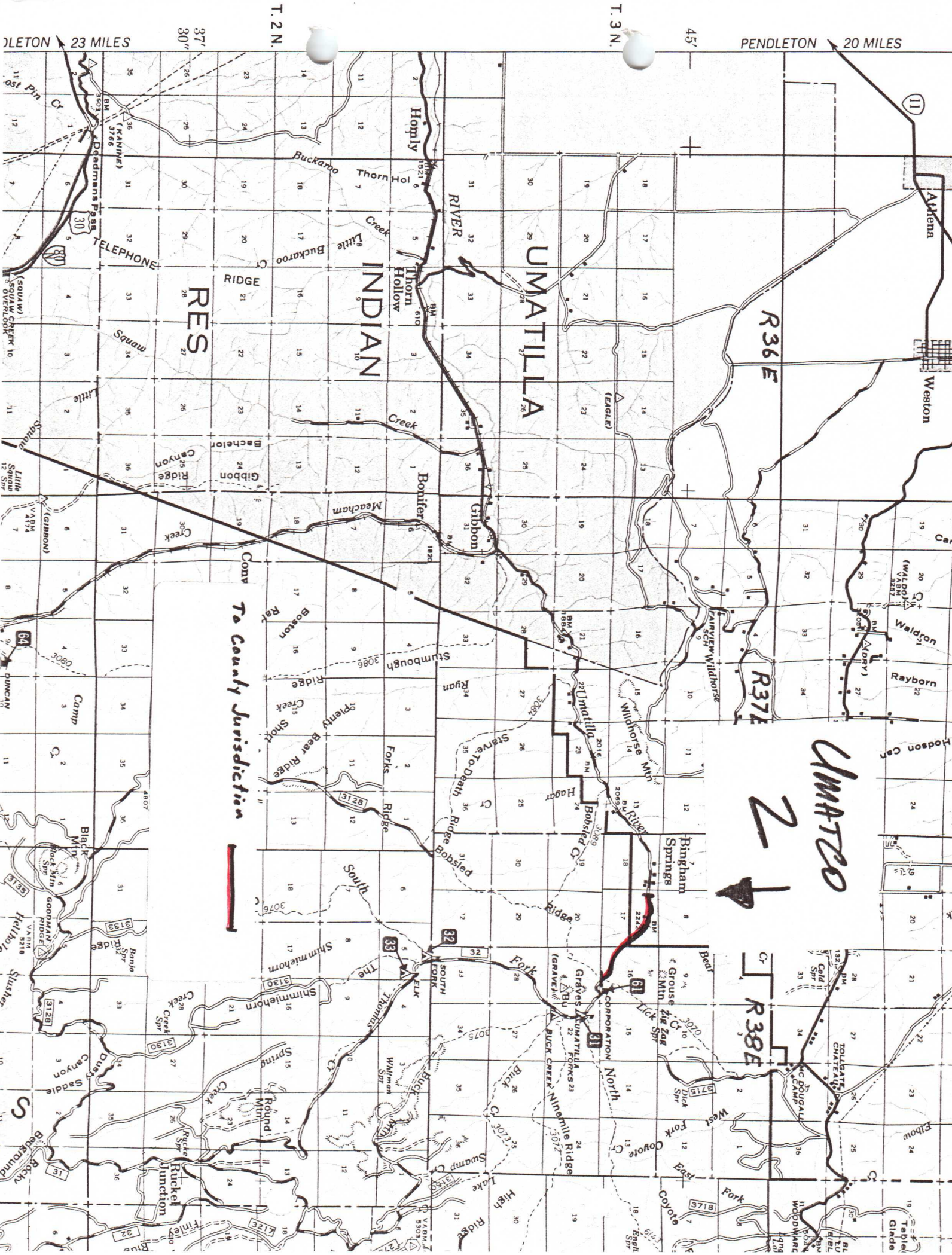




 UMATILLA COUNTY
 Board of Commissioners

23 MILES

PENDLETON 20 MILES



RES

INDIAN

UMATILLA

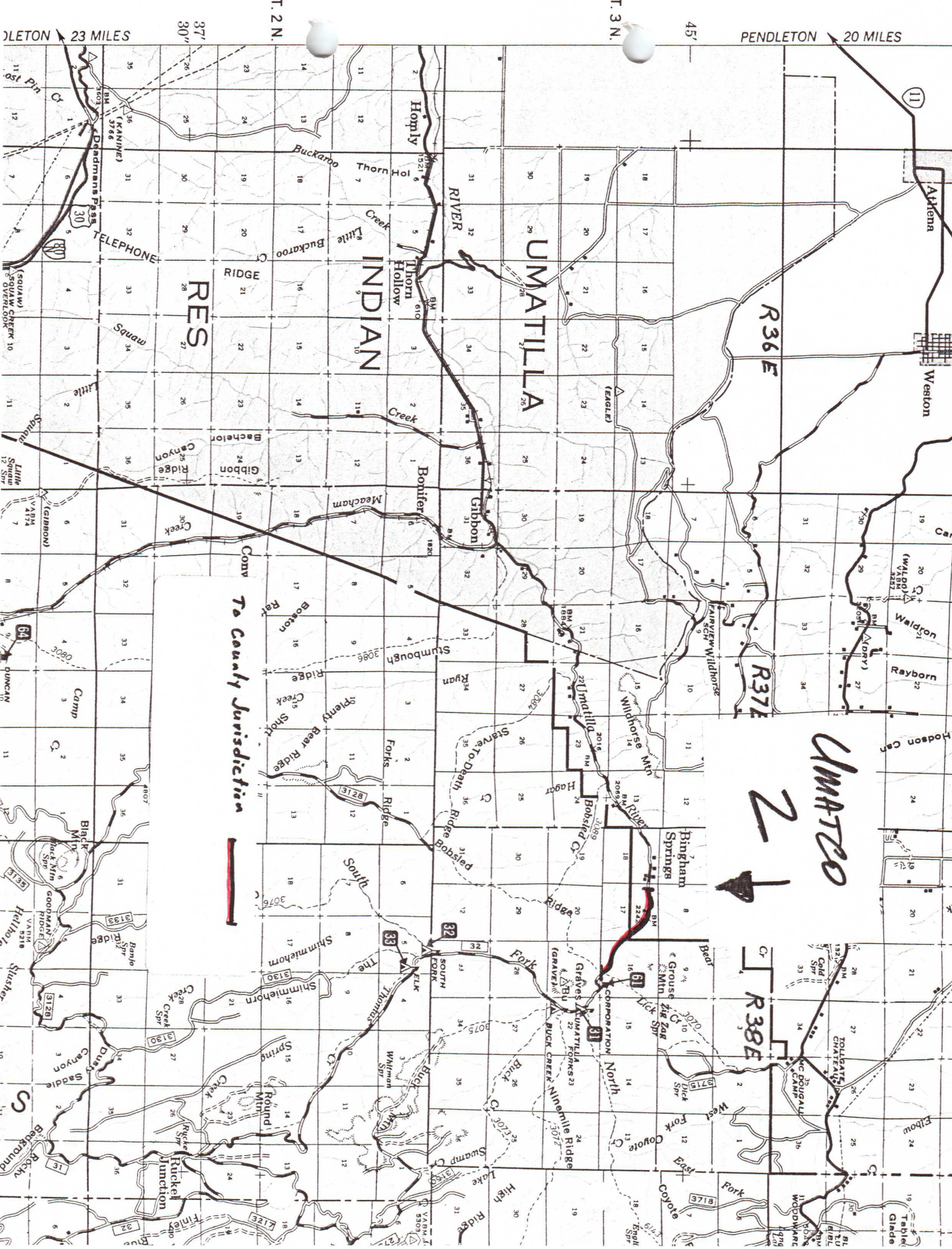
R36E

R37E

UMATILLA
2
↓

R38E

To County Jurisdiction



RES

INDIAN

UMATILLA

R36E

R37E

UMATILLA
2
↓

R38E

To County Jurisdiction

