

4B-26-15
T2N R33 E

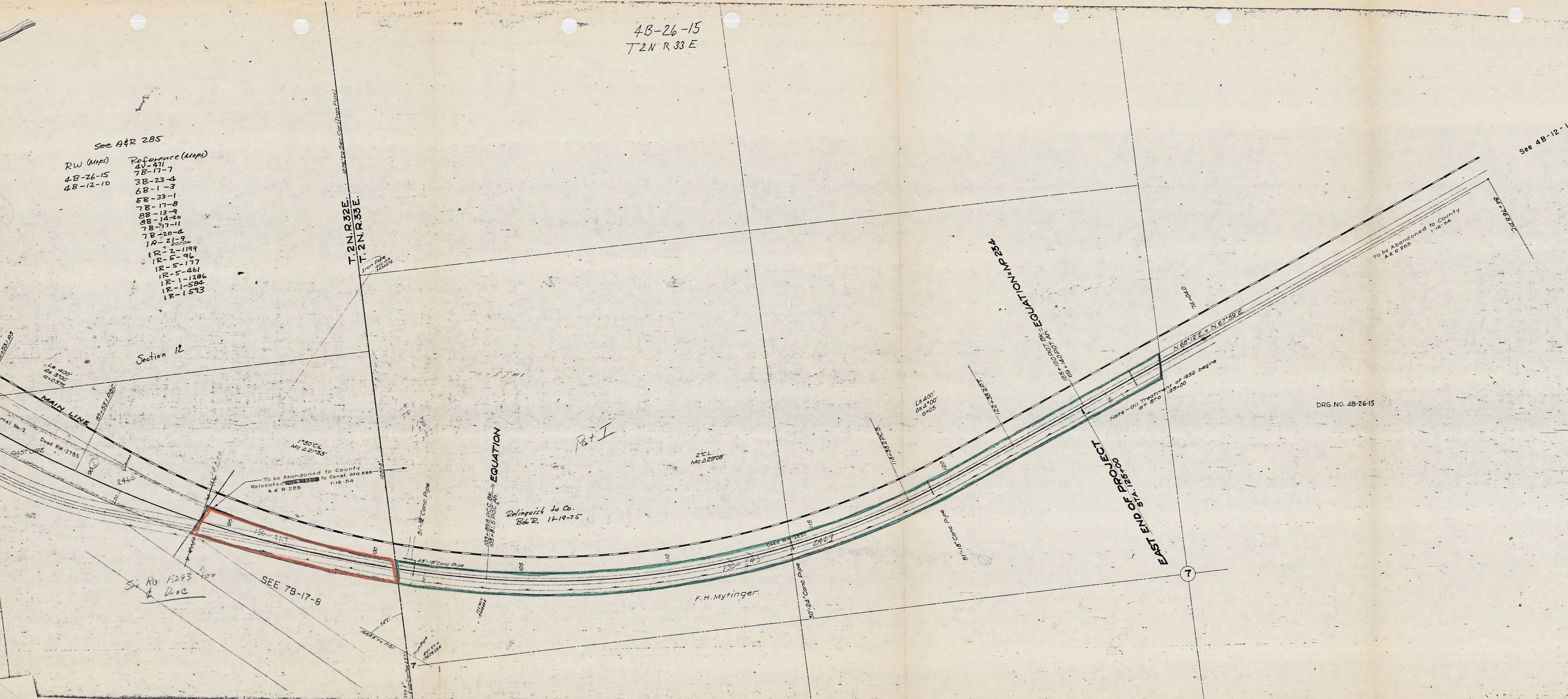
4B-12-10
T2N R33 E

T2N R33 E

See A&R 285

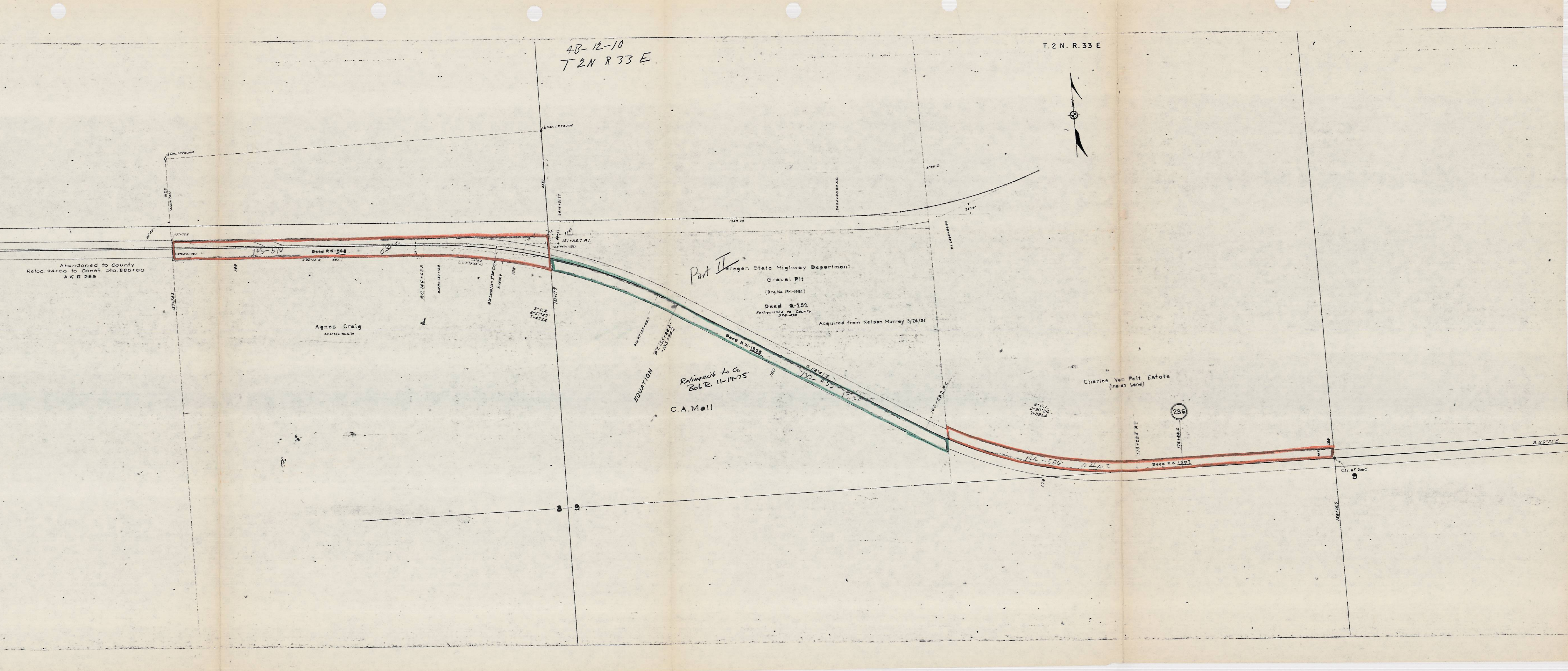
| RW (Acres) | Reference (Acres) |
|------------|-------------------|
| 4B-26-15 | 7B-17-4 |
| 4B-12-10 | 3B-23-4 |
| | 6B-1-3 |
| | 6B-33-1 |
| | 7B-17-8 |
| | 8B-13-4 |
| | 8B-14-20 |
| | 7B-17-11 |
| | 7B-20-4 |
| | 1A-21-30 |
| | 1R-2-119 |
| | 1R-5-96 |
| | 1R-5-177 |
| | 1R-5-461 |
| | 1R-1-1286 |
| | 1R-1-584 |
| | 1R-1-513 |

Section 12



DRG. NO. 4B-26-15

See 4B-12-10



Part II

Relinquish Co.
Bol R. 11-19-75

C.A. Moll

Charles Van Pelt Estate
(Indian Land)

285