

See Page 4

See Page 18

See Page 8

119° 00' 00"

118° 52' 30"

118° 45' 00"

15° 52' 30"

See Page 5

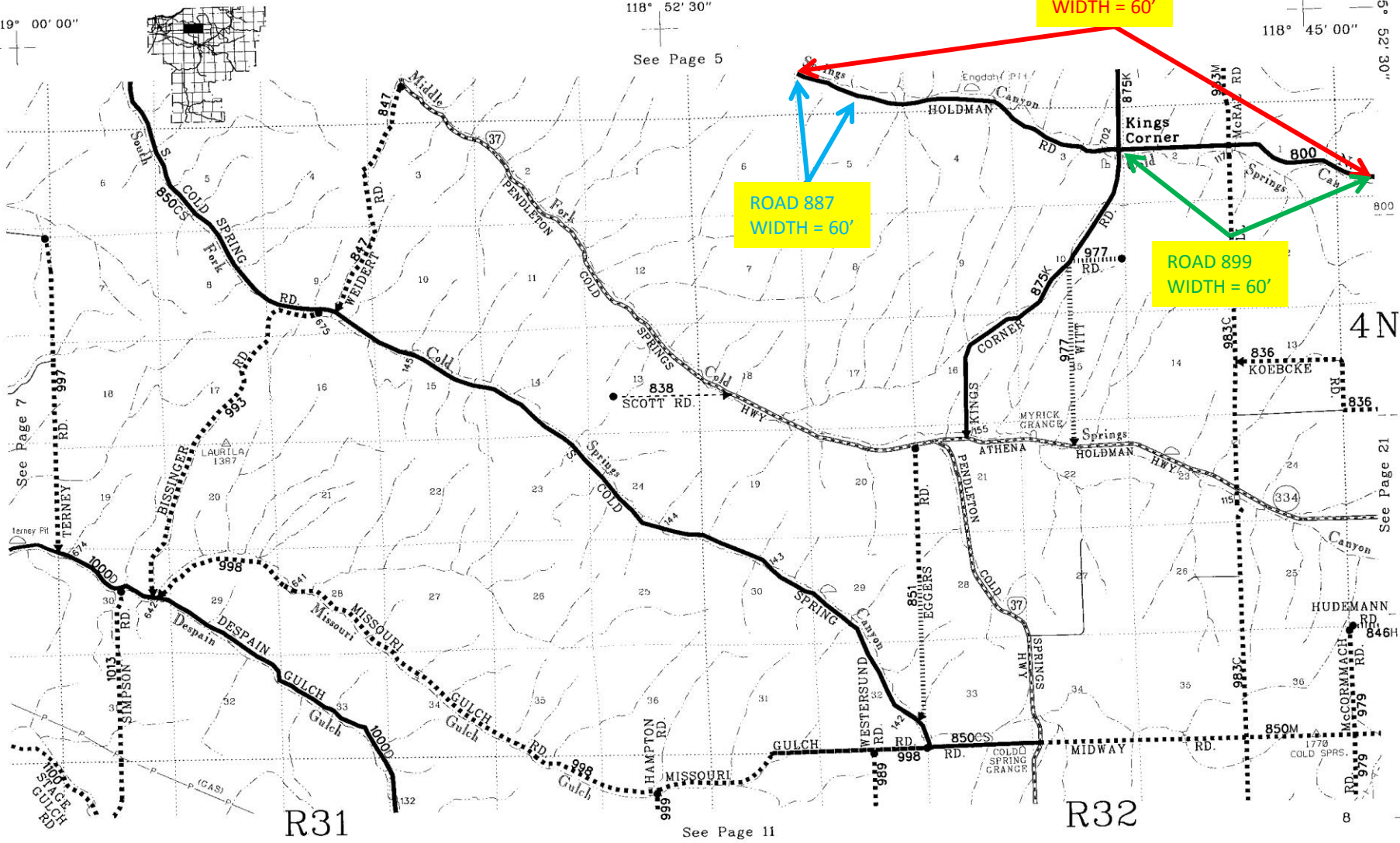
See Page 21

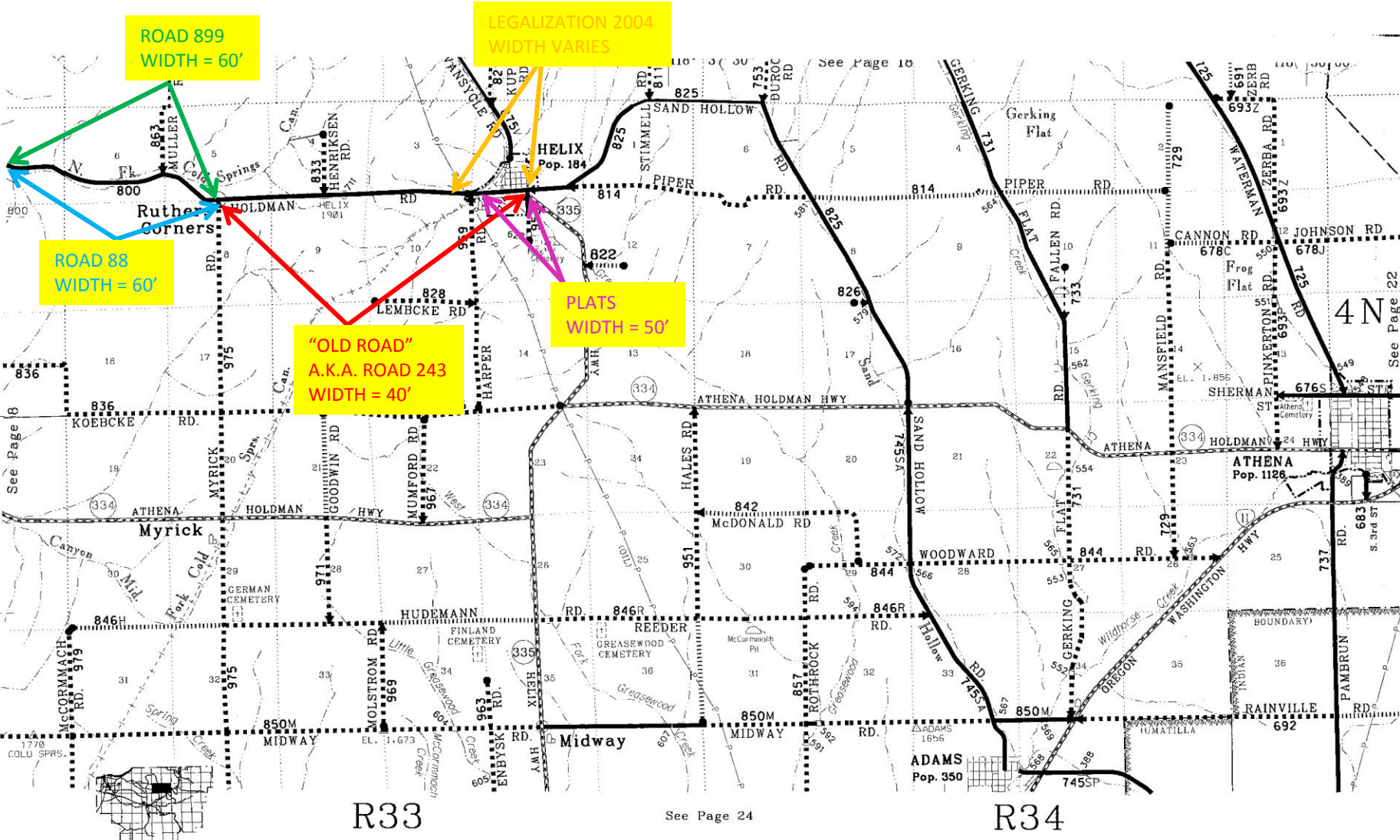
See Page 11

ROAD 88
WIDTH = 60'

ROAD 887
WIDTH = 60'

ROAD 899
WIDTH = 60'





ROAD 899
WIDTH = 60'

LEGALIZATION 2004
WIDTH VARIES

ROAD 88
WIDTH = 60'

"OLD ROAD"
A.K.A. ROAD 243
WIDTH = 40'

PLATS
WIDTH = 50'

R33

See Page 24

R34

4N
See Page 22