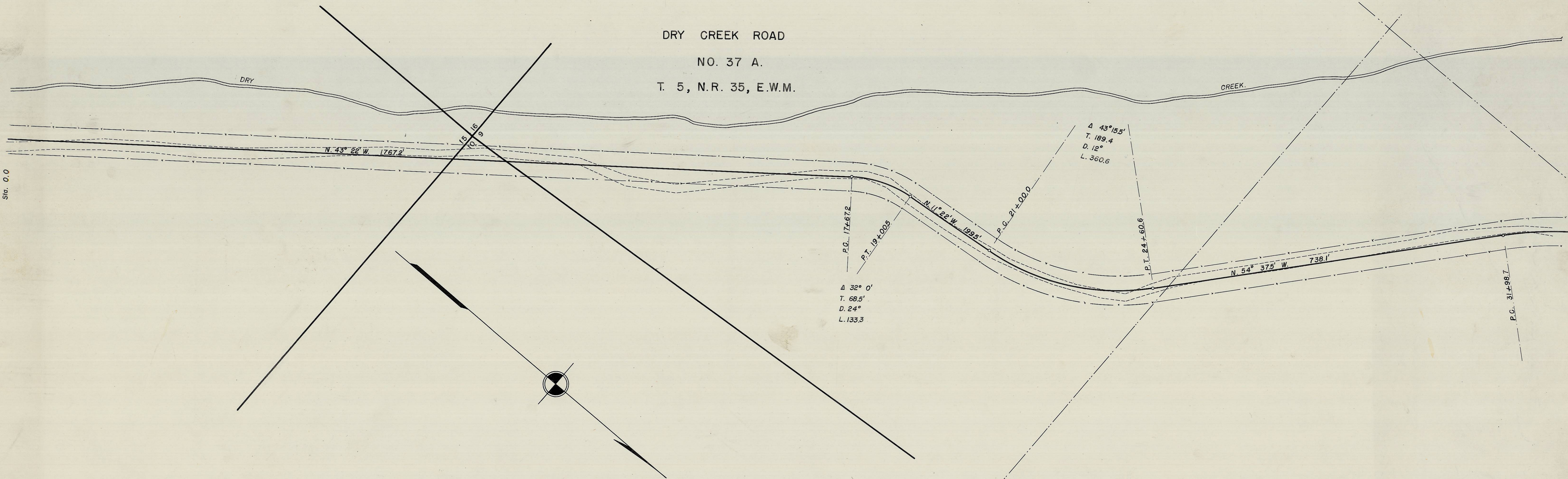


DRY CREEK ROAD

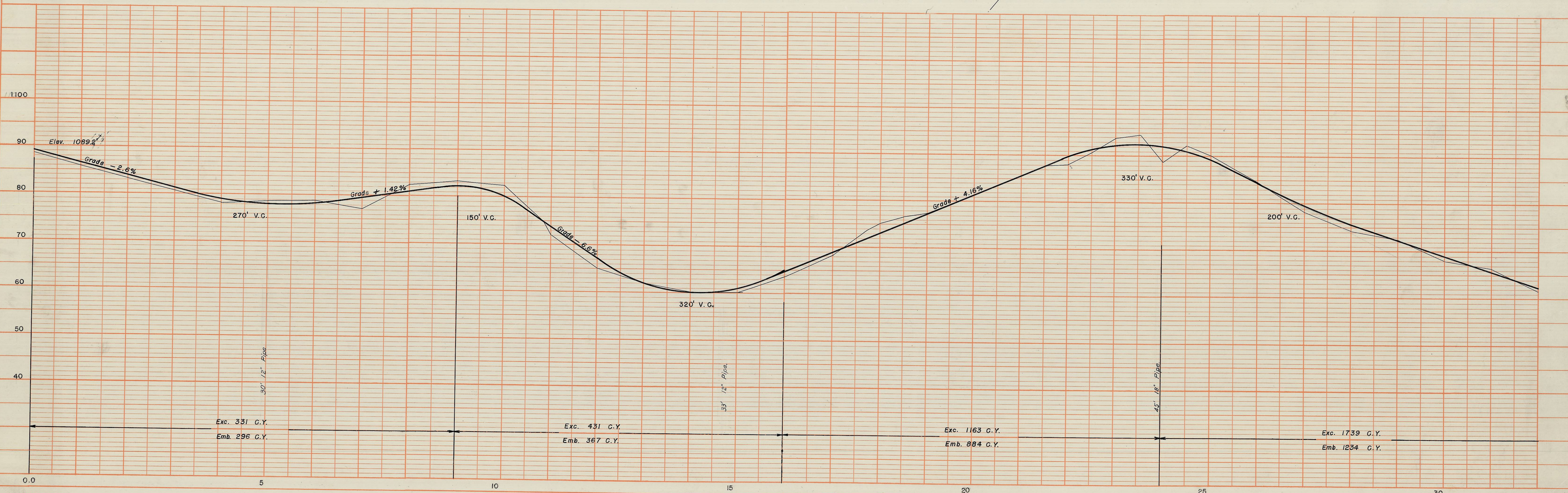
NO. 37 A.

T. 5, N.R. 35, E.W.M.



DATE	
BY	
SURVEYED	
PLANNED	
NOTED	
RT. OF WAY CHECKED	
NO.	

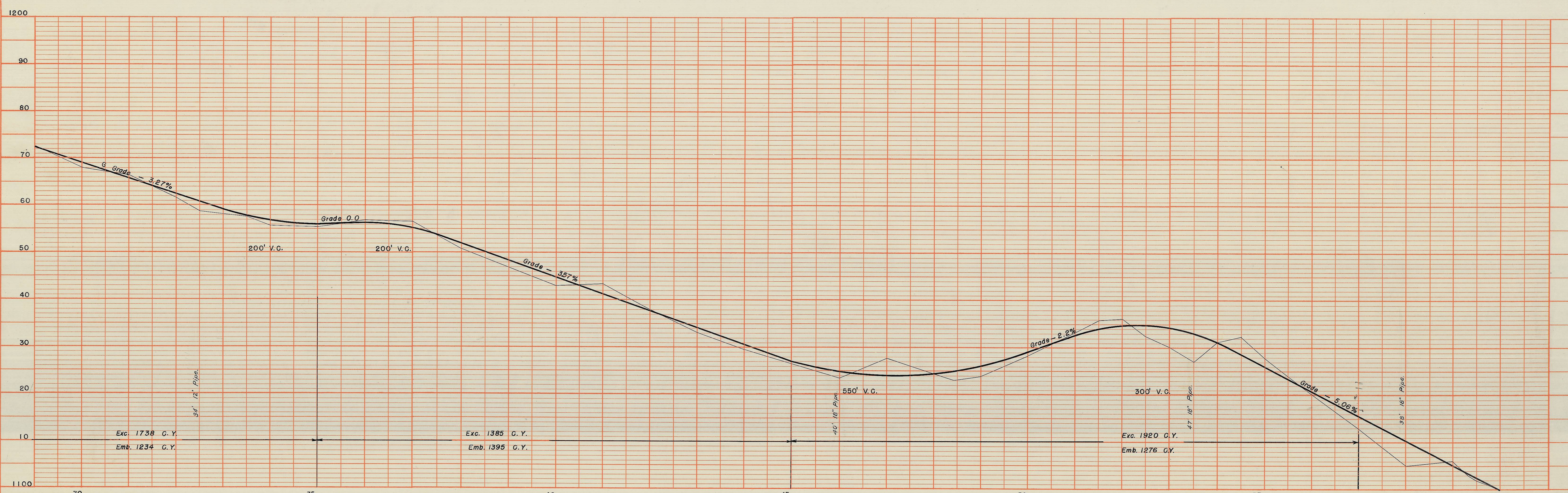
DATE	
BY	
SURVEYED	
PLANNED	
NOTED	
RT. OF WAY CHECKED	
NO.	



20832
Dry Creek

DRY CREEK ROAD
 NO. 37 A.
 T. 5, N. R. 35, E. W. M.

Box 24

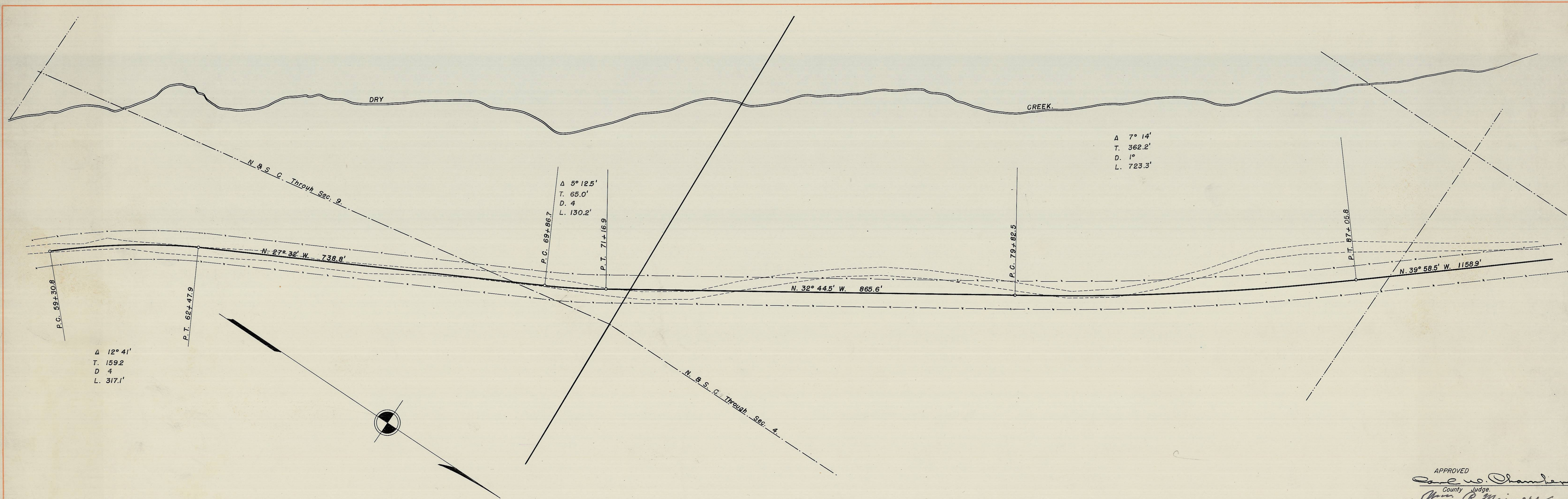


DATE	
BY	
SURVEYED	
NOTE BOOK	
ALIGNMENT CHECKED	
RT. OF WAY CHECKED	
NO.	

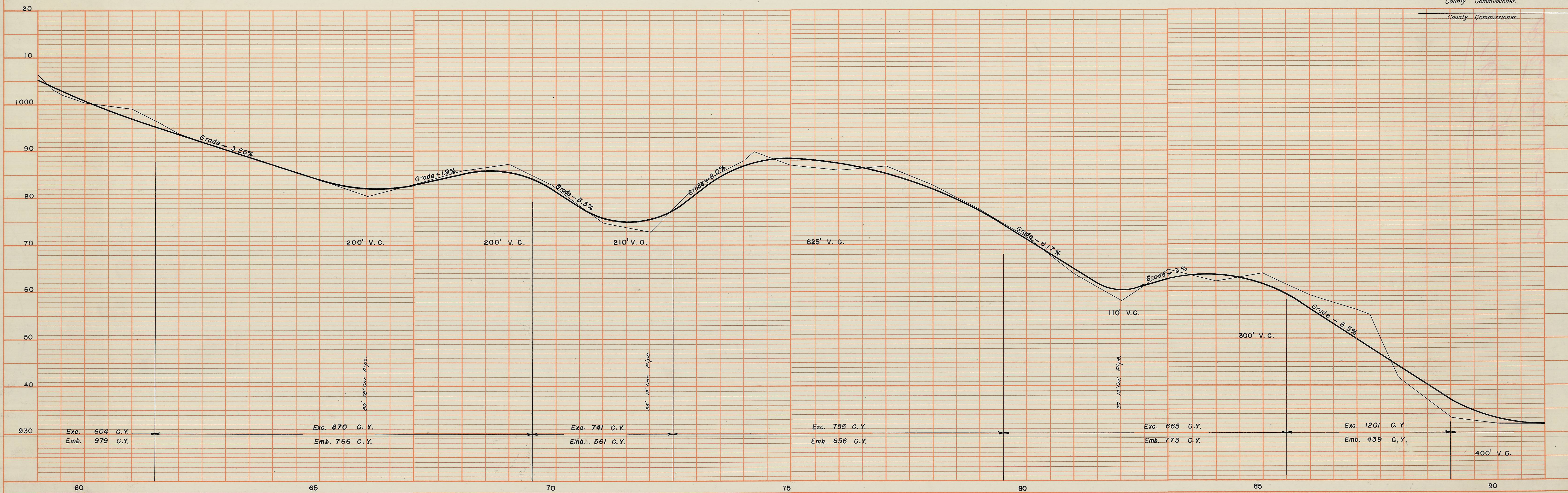
DATE	
BY	
SURVEYED	
NOTE BOOK	
ALIGNMENT CHECKED	
RT. OF WAY CHECKED	
NO.	

DATE: _____ BY: _____
 PLAN SURVEYED, PLOTTED, CHECKED, AND REVISIONS MADE BY: _____
 NO. _____

DATE: _____ BY: _____
 PROFILE GRADES CHECKED, PLOTTED, AND REVISIONS MADE BY: _____
 NO. _____



APPROVED
Carroll Chambers
 County Judge
John P. Miners
 County Commissioner
 County Commissioner



DATE	
BY	
SURVEYED	
PLOTTED	
NOTED	
PT. OF WAY CHECKED	
NO.	

DATE	
BY	
SURVEYED	
PLOTTED	
NOTED	
PT. OF WAY CHECKED	
NO.	

