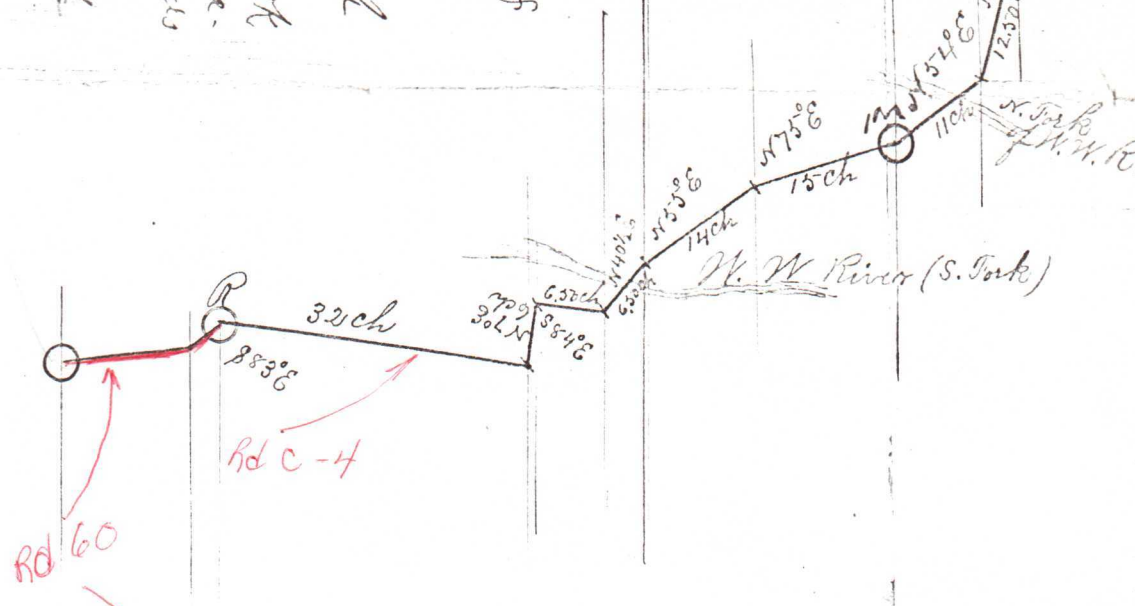
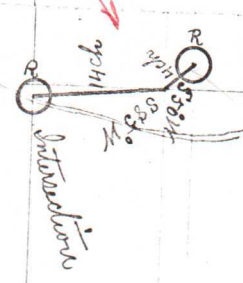


1878
Henry
Clark
in Book
of a lease
of 1878
37 1/4



Lower Sinkton
Road



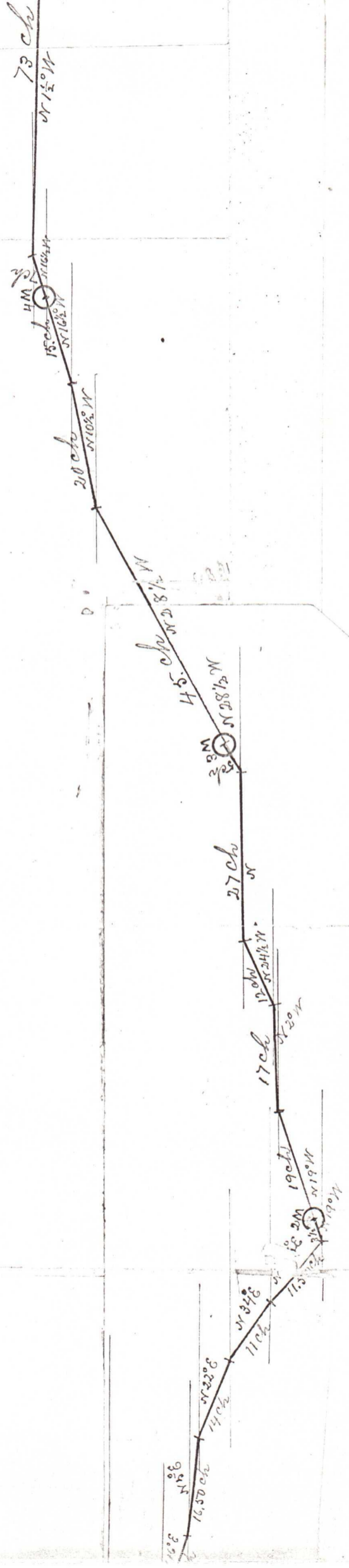
Initiatory stakes, on graded hill.
W. of A. Garred's

Jno. C. Arnold
Surveyor

Viewers } J. L. Reiser
 } Tho. Swezed

Chain Bearers } S. Bolus
 } R. M. Dorothy
Marker, } J. P. Lawrence

Attest July 1, 1878
J. J. Kelley
Clerk
Recorded in the
"a" Record of this
village, county of
St. Paul and
pages 1137-114



Plat of within described
County Road.

18 1/2 ch
S 75° 20' W

45 ch
N 20° W

8 M

60 ch
N 20° W

7 M
20 ch

80 ch
N 40° W

6 M

13 ch
20.25 ch
W

21.25 ch
W

10.50 ch

N 75° 50' W
5 M

