

The hereinafter described right of way being, and is a strip of land sixty (60) feet wide, being thirty (30) feet on each side of the center line of the survey as projected upon the map for construction over, across and through the East  $\frac{1}{2}$  of Section 1, Twp. 4 N, Range 36, E.W.M. and South  $\frac{1}{2}$  of Section 6, and the North East  $\frac{1}{4}$  of Section 7, Twp. 4 N, Range 37, E.W.M. Umatilla County Oregon, the center line of which is described as follows:-

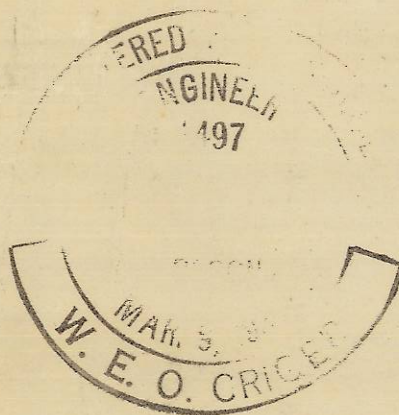
Beginning at a point which is located approximately 1200 feet west of the east line of section 1, Twp. 4 N, Range 36, E.W.M. and 2342 feet north of the east and west center line of said section 1, which is the point of beginning; thence proceed along a tangent bearing South  $1^{\circ} 0'$  West for a distance of 130.0 feet; thence around a spiral curve left with a long cord bearing south  $7^{\circ} 15'$  east for a distance of 550.0 feet; thence around a  $6^{\circ}$  curve left for a distance of 284.2 feet; thence around a spiral curve left with a long cord bearing south  $40^{\circ} 48'$  east for a distance of 550.0 feet; thence along a tangent bearing south  $49^{\circ} 03'$  east for a distance of 32.2 feet; thence around a spiral curve right with a long cord bearing south  $37^{\circ} 51'$  east for a distance of 320.0 feet; thence around a  $14^{\circ}$  curve right for a distance of 125.8 feet; thence around a spiral curve right with a long cord bearing south  $2^{\circ} 10'$  west for a distance of 320.0 feet; thence along a tangent bearing south  $13^{\circ} 22'$  west for a distance of 2.3 feet; thence around a spiral curve left with a long cord bearing south  $2^{\circ} 52'$  west for a distance of 300.0 feet; thence around a  $14^{\circ}$  curve left for a distance of 99.5 feet; thence around a spiral curve left with a long chord bearing south  $32^{\circ} 05'$  east for a distance of 300.0 feet; thence along a tangent bearing south  $42^{\circ} 35'$  east for a distance of 95.4 feet; thence around a spiral curve right with a long chord bearing south  $38^{\circ} 35'$  east for a distance of 220.0 feet; thence around an  $8^{\circ}$  curve right for a distance of 74.2 feet; thence around a spiral curve right with a long chord bearing south  $24^{\circ} 39'$  east for a distance of 220.0 feet; thence along a tangent bearing south  $20^{\circ} 39'$  east for a distance of 7.1 feet; thence around a spiral curve left with a long chord bearing south  $26^{\circ} 09'$  east for a distance of 200.00 feet; thence around a spiral curve left for a distance of 106.7 feet; thence around a spiral curve left with a long chord bearing south  $47^{\circ} 45'$  east for a distance of 200.0 feet; thence along a tangent bearing south  $53^{\circ} 15'$  east for a distance of 16.3 feet; thence around a spiral curve right with a long chord bearing south  $50^{\circ} 51'$  east for a distance of 240.0 feet; thence around a  $4^{\circ}$  curve right for a distance of 82.9 feet; thence around a spiral curve right with a long chord bearing south  $42^{\circ} 43'$  east; for a distance of 240.0 feet; thence along a tangent bearing south  $40^{\circ} 19'$  east for a distance of 00.1 feet; thence around a spiral curve left with a long chord bearing south  $43^{\circ} 19'$  east; for a distance of 240.0 feet; thence around a  $5^{\circ}$  curve left for a distance of 107.3 feet; thence around a spiral curve left with a long chord bearing south  $54^{\circ} 41'$  east for a distance of 240.0 feet; thence along a tangent bearing south  $57^{\circ} 42'$  east for a distance of 389.5 feet; thence around a spiral curve left with a long chord bearing south  $62-06'$  east for a distance of 340.0 feet; thence around a  $4^{\circ}$  curve left for a distance of 116.2 feet; thence around a spiral curve left with a long chord bearing south  $75^{\circ} 32'$  east for a distance of 340.0 feet; thence along a tangent bearing south  $79^{\circ} 57'$  east for a distance of 8.9 feet; thence around a spiral curve right with a long chord bearing south  $76^{\circ} 57'$  east for a distance of 300.0 feet; thence around a  $4^{\circ}$  curve right for a distance of 62.1 feet; thence around a spiral curve right with a long chord bearing south  $68^{\circ} 28'$  east; for a distance of 300.0 feet; thence along a tangent bearing south  $65^{\circ} 28'$  east for a distance of 226.9 feet; thence around a spiral curve left with a long chord bearing south  $70^{\circ} 28'$  east for a distance of 200.0 feet; thence around a  $10^{\circ}$  curve left for a distance of 43.0 feet; thence around a spiral curve left with a long chord bearing south  $84^{\circ} 46'$  east for a distance of 200.0 feet; thence along a tangent bearing south  $89^{\circ} 46'$  east for a distance of 21.9 feet; thence around a spiral curve right with a long chord bearing south  $82^{\circ} 46'$  east for a distance of 200.0 feet; thence around a  $14^{\circ}$  curve right for a distance of 247.0 feet; thence around a spiral curve right with a long chord bearing south  $34^{\circ} 11'$  east for a distance of 200.0 feet; thence along a tangent bearing south  $27^{\circ} 11'$  east for a distance of 5.8 feet; thence around spiral curve left with a long chord bearing S

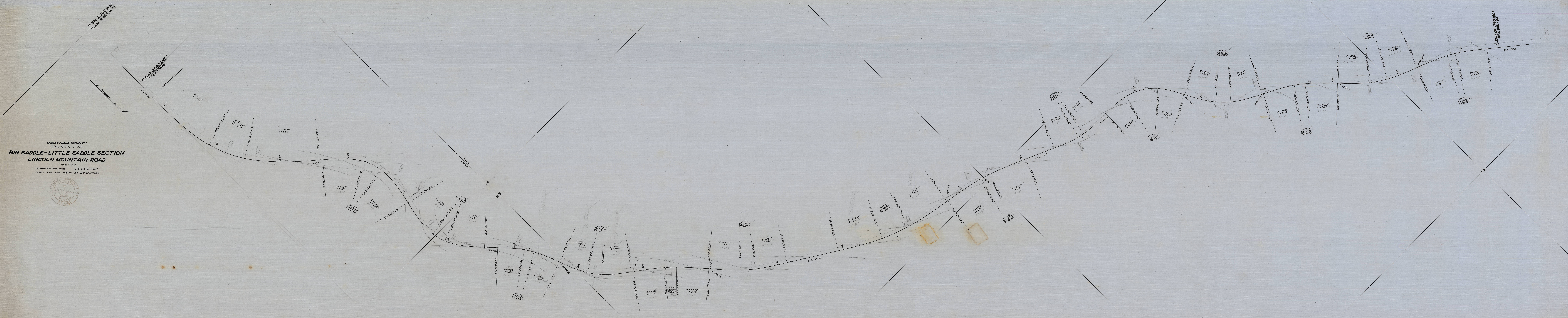
33° 11' east for a distance of 240.0 feet; thence around a 10° curve left for a distance of 111.0 feet; thence around a spiral curve left with a long chord bearing south 56° 17' E for a distance of 240.0 feet thence along a tangent bearing south 62° 17' east for a distance of 10.1 feet; thence around a spiral curve right with a long chord bearing south 58° 41' east for a distance of 240.0 feet; thence around a 6° curve right for a distance of 82.2 feet; thence around a spiral curve right with a long chord bearing south 46° 33' E ~~feet~~ for a distance of 240.0 feet; thence along a tangent bearing south 42° 57' east for a distance of 4.8 feet; thence around a spiral curve left with a long chord bearing south 47° 09' east for a distance of 240.0 feet; thence around a 7° curve left for a distance of 126.0 feet; thence around a spiral curve left with a long chord bearing south 64° 22' east for a distance of 16.0 feet; to a point approximately 980.0 feet north of the middle of, and on the east boundary line of section 7, Twp. 4 North, Range 37, E.W.M. and contains 13.95 acres more or less.

A. R. Shumway

The hereinafter described right of way being, and is a strip of land sixty (60) feet wide, being 30 feet on each side of the center line of the survey as projected upon the map for the construction over and across the south west  $\frac{1}{4}$  section 8, Twp. 4 North, Range 37, E. W. M. Beginning at a point approximately 980.0 feet north of the center line of, and on the east boundary of section 7, Twp 4 North, Range 37, E.W.M. which is the point of beginning:- Thence proceed around a spiral curve left with a long chord bearing south 64° 22' east for a distance of 224.0 feet; thence along a tangent bearing south 68° 34' east for a distance of 1.3 feet; thence around a spiral curve right with a long chord bearing south 64° 58' east for a distance of 240.0 feet; thence around a 6° curve right for a distance of 61.4 feet; thence around a spiral curve right with a long chord bearing south 54° 05' east for a distance of 240.0 feet; thence along a tangent bearing south 50° 29' east for a distance of 88.6 feet; to and which is the end of the project and containing 1.18 acres more or less.

the center line of which is described as follows.





UMATILLA COUNTY  
PROJECTED LINE  
**BIG SADDLE-LITTLE SADDLE SECTION**  
LINCOLN MOUNTAIN ROAD  
SCALE 1"=100'  
BEARINGS ASSUMED U.S.C.S. DATUM  
SURVEYED 1935 F.B. HAYES, L.C. ENGINEER



Box "2"