

SE 1/4 SECTION 24, T. 6 N., R. 35 E., W.M.  
NE 1/4 SECTION 25, T. 6 N., R. 35 E., W.M.

SET MONUMENT LIST: ALL MONUMENTS SET BETWEEN 12/03/2018 AND 12/05/2018

ALUM. = ALUMINUM

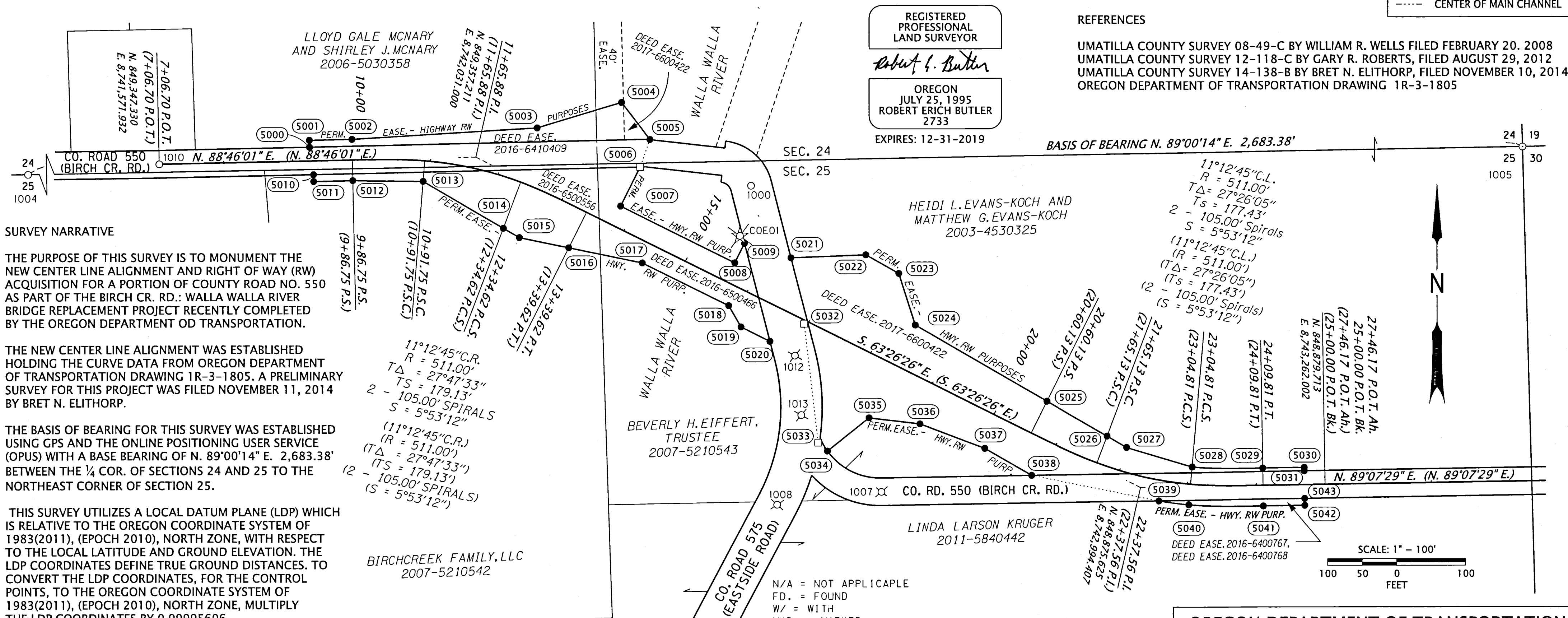
SET MONUMENT LIST (CONTINUED): ALL MONUMENTS SET BETWEEN 12/03/2018 AND 12/05/2018

ALUM. = ALUMINUM

PT. NO.	LDP NORTHING	LDP EASTING	STATION	OFFSET	DESCRIPTION
5000	849,372.02	8,741,789.75	9+25.00	20.00 LT.	SET 5/8" X 30" IRON ROD W/1/4" ODOT ALUM. CAP
5001	849,382.02	8,741,789.53	9+25.00	30.00 LT.	SET 5/8" X 30" IRON ROD W/1/4" ODOT ALUM. CAP
5002	849,383.35	8,741,851.27	9+86.75	30.00 LT.	SET 5/8" X 30" IRON ROD W/1/4" ODOT ALUM. CAP
5003	849,399.39	8,742,119.72	12+30.00	82.00 LT.	SET 5/8" X 30" IRON ROD W/1/4" ODOT ALUM. CAP
5004	849,436.09	8,742,242.12	13+15.00	165.00 LT.	SET 5/8" X 30" IRON ROD W/1/4" ODOT ALUM. CAP
5005	849,382.13	8,742,283.27	13+75.00	135.09 LT.	SET 5/8" X 30" IRON ROD W/1/4" ODOT ALUM. CAP
5006	849,342.33	8,742,268.97	13+80.00	93.09 LT.	UNSTABLE LOCATION, NOTHING SET
5007	849,285.90	8,742,240.76	13+80.00	30.00 LT.	SET 5/8" X 30" IRON ROD W/1/4" ODOT ALUM. CAP
5008	849,203.18	8,742,406.24	15+65.00	30.00 LT.	SET 5/8" X 30" IRON ROD W/1/4" ODOT ALUM. CAP
5009	849,231.47	8,742,420.38	15+65.00	61.63 LT.	SET 5/8" X 30" IRON ROD W/1/4" ODOT ALUM. CAP
5010	849,332.14	8,741,795.61	9+30.00	20.00 RT.	SET 5/8" X 30" IRON ROD W/1/4" ODOT ALUM. CAP
5011	849,322.18	8,741,795.82	9+30.00	30.00 RT.	SET 5/8" X 30" IRON ROD W/1/4" ODOT ALUM. CAP
5012	849,323.36	8,741,852.56	9+86.75	30.00 RT.	SET 5/8" X 30" IRON ROD W/1/4" ODOT ALUM. CAP
5013	849,322.12	8,741,954.42	10+91.75	30.00 RT.	SET 5/8" X 30" IRON ROD W/1/4" ODOT ALUM. CAP
5014	849,254.18	8,742,070.66	12+34.62	71.21 RT.	SET 5/8" X 30" IRON ROD W/1/4" ODOT ALUM. CAP
5015	849,240.58	8,742,093.91	12+65.00	75.00 RT.	SET 5/8" X 30" IRON ROD W/1/4" ODOT ALUM. CAP
5016	849,225.56	8,742,165.45	13+39.62	57.64 RT.	SET 5/8" X 30" IRON ROD W/1/4" ODOT ALUM. CAP
5017	849,203.17	8,742,272.07	14+45.00	30.00 RT.	SET 5/8" X 30" IRON ROD W/1/4" ODOT ALUM. CAP
5018	849,140.57	8,742,397.30	15+85.00	30.00 RT.	SET 5/8" X 30" IRON ROD W/1/4" ODOT ALUM. CAP
5019	849,109.26	8,742,415.19	16+15.00	50.00 RT.	SET 5/8" X 30" IRON ROD W/1/4" ODOT ALUM. CAP
5020	849,088.30	8,742,457.12	16+61.88	50.00 RT.	SET 5/8" X 30" IRON ROD W/1/4" ODOT ALUM. CAP
5021	849,210.29	8,742,487.76	16+34.74	72.81 LT.	SET 5/8" X 30" IRON ROD W/1/4" ODOT ALUM. CAP

PT. NO.	LDP NORTHING	LDP EASTING	STATION	OFFSET	DESCRIPTION
5022	849,214.38	8,742,596.30	17+30.00	125.00 LT.	SET 5/8" X 30" IRON ROD W/1/4" ODOT ALUM. CAP
5023	849,187.10	8,742,644.15	17+85.00	122.00 LT.	SET 5/8" X 30" IRON ROD W/1/4" ODOT ALUM. CAP
5024	849,111.53	8,742,667.86	18+40.00	65.00 LT.	SET 5/8" X 30" IRON ROD W/1/4" ODOT ALUM. CAP
5025	849,000.76	8,742,858.59	20+60.13	51.21 LT.	SET 5/8" X 30" IRON ROD W/1/4" ODOT ALUM. CAP
5026	848,950.13	8,742,945.78	21+65.13	41.52 LT.	SET 5/8" X 30" IRON ROD W/1/4" ODOT ALUM. CAP
5027	848,933.60	8,742,974.24	22+00.00	35.00 LT.	SET 5/8" X 30" IRON ROD W/1/4" ODOT ALUM. CAP
5028	848,905.21	8,743,069.25	23+05.00	25.00 LT.	SET 5/8" X 30" IRON ROD W/1/4" ODOT ALUM. CAP
5029	848,903.33	8,743,171.44	24+09.81	25.00 LT.	SET 5/8" X 30" IRON ROD W/1/4" ODOT ALUM. CAP
5030	848,904.25	8,743,231.62	24+70.00	25.00 LT.	SET 5/8" X 30" IRON ROD W/1/4" ODOT ALUM. CAP
5031	848,899.25	8,743,231.70	24+70.00	20.00 LT.	SET 5/8" X 30" IRON ROD W/1/4" ODOT ALUM. CAP
5032	849,113.75	8,742,506.87	16+95.00	5.00 RT.	CALCULATED POINT ONLY, NOTHING SET
5033	848,941.57	8,742,527.01	17+90.00	150.00 RT.	CALCULATED POINT ONLY, NOTHING SET
5034	848,929.28	8,742,540.42	18+07.49	155.00 RT.	SET 5/8" X 30" IRON ROD W/1/4" ODOT ALUM. CAP
5035	848,977.35	8,742,600.80	18+40.00	85.00 RT.	SET 5/8" X 30" IRON ROD W/1/4" ODOT ALUM. CAP
5036	848,968.42	8,742,674.59	19+10.00	60.00 RT.	SET 5/8" X 30" IRON ROD W/1/4" ODOT ALUM. CAP
5037	848,932.65	8,742,768.50	20+10.00	50.00 RT.	SET 5/8" X 30" IRON ROD W/1/4" ODOT ALUM. CAP
5038	848,893.21	8,742,836.37	20+87.94	55.00 RT.	SET 5/8" X 30" IRON ROD W/1/4" ODOT ALUM. CAP
5039	848,856.03	8,743,020.84	22+63.44	30.00 RT.	SET 5/8" X 30" IRON ROD W/1/4" ODOT ALUM. CAP
5040	848,850.44	8,743,064.27	23+04.81	30.00 RT.	SET 5/8" X 30" IRON ROD W/1/4" ODOT ALUM. CAP
5041	848,848.34	8,743,172.28	24+09.81	30.00 RT.	SET 5/8" X 30" IRON ROD W/1/4" ODOT ALUM. CAP
5042	848,849.26	8,743,232.46	24+70.00	30.00 RT.	SET 5/8" X 30" IRON ROD W/1/4" ODOT ALUM. CAP
5043	848,859.26	8,743,232.31	24+70.00	20.00 RT.	SET 5/8" X 30" IRON ROD W/1/4" ODOT ALUM. CAP

- LEGEND**
- ( ) RECORD DATA PER ODOT DRAWING 1R-03-1805
  - FOUND MONUMENT NOTED IN TABLE
  - SET MONUMENT NOTED IN TABLE
  - ✕ DESTROYED GPS STATION
  - ⊗ DESTROYED MONUMENT
  - CALCULATED POINT
  - NEW RIGHT OF WAY LINE
  - PROPERTY LINE OR RIGHT OF WAY LINE
  - EXISTING EASEMENT
  - CENTER OF MAIN CHANNEL



**SURVEY NARRATIVE**

THE PURPOSE OF THIS SURVEY IS TO MONUMENT THE NEW CENTER LINE ALIGNMENT AND RIGHT OF WAY (RW) ACQUISITION FOR A PORTION OF COUNTY ROAD NO. 550 AS PART OF THE BIRCH CR. RD.: WALLA WALLA RIVER BRIDGE REPLACEMENT PROJECT RECENTLY COMPLETED BY THE OREGON DEPARTMENT OF TRANSPORTATION.

THE NEW CENTER LINE ALIGNMENT WAS ESTABLISHED HOLDING THE CURVE DATA FROM OREGON DEPARTMENT OF TRANSPORTATION DRAWING 1R-3-1805. A PRELIMINARY SURVEY FOR THIS PROJECT WAS FILED NOVEMBER 11, 2014 BY BRET N. ELITHORP.

THE BASIS OF BEARING FOR THIS SURVEY WAS ESTABLISHED USING GPS AND THE ONLINE POSITIONING USER SERVICE (OPUS) WITH A BASE BEARING OF N. 89°00'14" E. 2,683.38' BETWEEN THE 1/4 COR. OF SECTIONS 24 AND 25 TO THE NORTHEAST CORNER OF SECTION 25.

THIS SURVEY UTILIZES A LOCAL DATUM PLANE (LDP) WHICH IS RELATIVE TO THE OREGON COORDINATE SYSTEM OF 1983(2011), (EPOCH 2010), NORTH ZONE, WITH RESPECT TO THE LOCAL LATITUDE AND GROUND ELEVATION. THE LDP COORDINATES DEFINE TRUE GROUND DISTANCES. TO CONVERT THE LDP COORDINATES, FOR THE CONTROL POINTS, TO THE OREGON COORDINATE SYSTEM OF 1983(2011), (EPOCH 2010), NORTH ZONE, MULTIPLY THE LDP COORDINATES BY 0.99995606.

**RECOVERED MONUMENT LIST**

PT. NO.	LDP NORTHING	LDP EASTING	STATION	OFFSET	DATE	DESCRIPTION & REFERENCE DOCUMENTS
1000	849,314.92	8,742,429.90	15+36.21	140.53 LT.	6/13/2014	FD. RAILROAD SPIKE W/PUNCH MARK, MKD: "LS 2627"; C.S. 12-118-C
1004	849,323.47	8,740,865.63	N/A	N/A	6/13/2014	FD. 3" BR. CAP MKD.: "T6N R35E, S24/S25, 1974, PLS 933"; C.S. 1-165-5
1005	849,370.11	8,743,548.60	N/A	N/A	6/13/2014	FD. 2 3/8" BR. CAP MKD.: "T6N R35E, R36E, S24/S19/S25/S30, 2008 PLS 1106"; C.S. 8-49-B
1007	848,869.91	8,742,618.64	19+04.00	173.13 RT.	N/A	MONUMENT DESTROYED DURING CONSTRUCTION, SEE C.S. 14-138-B FOR DESCRIPTION
1008	848,851.64	8,742,467.45	17+76.94	257.07 RT.	N/A	MONUMENT DESTROYED DURING CONSTRUCTION, SEE C.S. 14-138-B FOR DESCRIPTION
1010	849,347.36	8,741,571.93	7+06.70	0.00	6/26/2014	FD. RAILROAD SPIKE W/PUNCH MARK, MKD: "LS 2627"; C.S. 12-118-C
1012	849,067.57	8,742,493.40	17+03.61	52.33 RT.	N/A	MONUMENT DESTROYED DURING CONSTRUCTION, SEE C.S. 14-138-B FOR DESCRIPTION
1013	848,981.59	8,742,502.65	17+50.32	125.09 RT.	N/A	MONUMENT DESTROYED DURING CONSTRUCTION, SEE C.S. 14-138-B FOR DESCRIPTION
COE01	849,242.49	8,742,413.67	15+54.07	68.49 LT.	N/A	MONUMENT DESTROYED DURING CONSTRUCTION, SEE C.S. 14-138-B FOR DESCRIPTION

**REGISTERED PROFESSIONAL LAND SURVEYOR**  
Robert E. Butler  
OREGON JULY 25, 1995  
ROBERT ERICH BUTLER 2733  
EXPIRES: 12-31-2019

**REFERENCES**  
UMATILLA COUNTY SURVEY 08-49-C BY WILLIAM R. WELLS FILED FEBRUARY 20, 2008  
UMATILLA COUNTY SURVEY 12-118-C BY GARY R. ROBERTS, FILED AUGUST 29, 2012  
UMATILLA COUNTY SURVEY 14-138-B BY BRET N. ELITHORP, FILED NOVEMBER 10, 2014  
OREGON DEPARTMENT OF TRANSPORTATION DRAWING 1R-3-1805

**RECOVERED MONUMENT LIST (CONTINUED):**

PT. NO.	LDP NORTHING	LDP EASTING	STATION	OFFSET	DESCRIPTION
1000	849,314.92	8,742,429.90	15+36.21	140.53 LT.	FD. RAILROAD SPIKE W/PUNCH MARK, MKD: "LS 2627"; C.S. 12-118-C
1004	849,323.47	8,740,865.63	N/A	N/A	FD. 3" BR. CAP MKD.: "T6N R35E, S24/S25, 1974, PLS 933"; C.S. 1-165-5
1005	849,370.11	8,743,548.60	N/A	N/A	FD. 2 3/8" BR. CAP MKD.: "T6N R35E, R36E, S24/S19/S25/S30, 2008 PLS 1106"; C.S. 8-49-B
1007	848,869.91	8,742,618.64	19+04.00	173.13 RT.	MONUMENT DESTROYED DURING CONSTRUCTION, SEE C.S. 14-138-B FOR DESCRIPTION
1008	848,851.64	8,742,467.45	17+76.94	257.07 RT.	MONUMENT DESTROYED DURING CONSTRUCTION, SEE C.S. 14-138-B FOR DESCRIPTION
1010	849,347.36	8,741,571.93	7+06.70	0.00	FD. RAILROAD SPIKE W/PUNCH MARK, MKD: "LS 2627"; C.S. 12-118-C
1012	849,067.57	8,742,493.40	17+03.61	52.33 RT.	MONUMENT DESTROYED DURING CONSTRUCTION, SEE C.S. 14-138-B FOR DESCRIPTION
1013	848,981.59	8,742,502.65	17+50.32	125.09 RT.	MONUMENT DESTROYED DURING CONSTRUCTION, SEE C.S. 14-138-B FOR DESCRIPTION
COE01	849,242.49	8,742,413.67	15+54.07	68.49 LT.	MONUMENT DESTROYED DURING CONSTRUCTION, SEE C.S. 14-138-B FOR DESCRIPTION

N/A = NOT APPLICABLE  
FD. = FOUND  
W/ = WITH  
MKD. = MARKED  
C.S. = COUNTY SURVEY

**RECEIVED BY**  
Umatilla County Surveyor  
Date: 1/30/19  
Rec'd By: CT  
No.: 19-010-B

**OREGON DEPARTMENT OF TRANSPORTATION**  
RIGHT-OF-WAY BOUNDARY MONUMENTATION MAP  
BIRCH CR. RD.: WALLA WALLA RIVER BRIDGE REPLACEMENT  
BIRCH CREEK ROAD  
UMATILLA COUNTY

ODOT REGION 5 TECH CENTER  
3012 ISLAND AVENUE  
LA GRANDE, OR 97850 KEY NO. 18420

JANUARY 2, 2019  
SCALE: 1" = 100'  
SHEET 1 OF 1