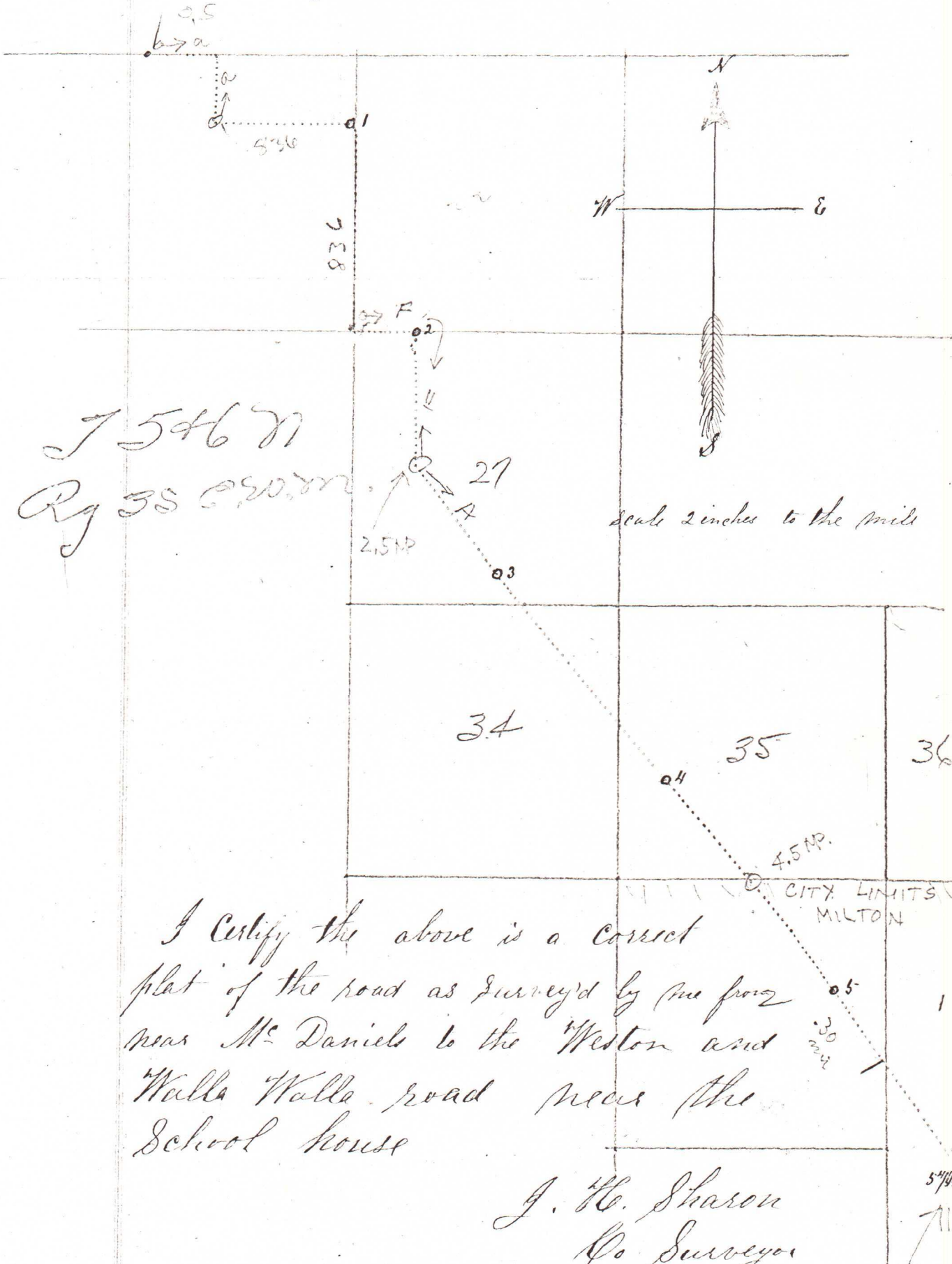


37



I Certify the above is a correct  
 plat of the road as surveyed by me from  
 near Mc Daniels to the Weston and  
 Walla Walla road near the  
 School house

J. H. Sharon  
 Co Surveyor

5.8  
 4.5  
 1.3

5.8 miles  
 - 1.25 - R# 636  
 0.75 - F Type Pol.  
 2.50 - A Type Pol.  
 - 1.30 City of Milton  
 5.8 Total miles pedic  
 21.6  
 3.2 total in

Road 37

Field notes & Plat

Road to Milton

Filed June 24<sup>th</sup> 1874

F M Corbridge  
Clerk

Recorded in Book "A"  
Record of Unimproved  
County Roads and  
Field notes pages 71  
and 72.