

		Chains	Distance	Departure	Angle
Thence	S 79° E	790	50.98		
.	S 74° 30' E	427	55.25		
.	S 63° E	515	60.40		
.	S 73° 35' E	490	65.30		
.	N 79° 25' E	310	68.40		

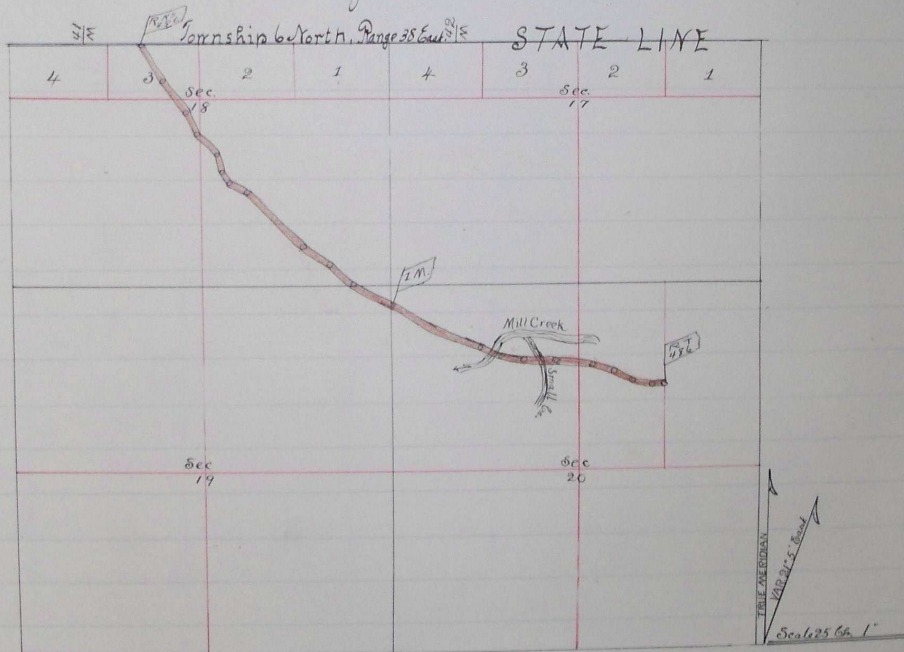
Rd # 507

To a point on East Line of the West 1/2 of the East 1/2, Sec 20 and 17.00 chains North of the center of the East 1/2 Sec 20 all in Township 6 North Range 38 East Will. Mer. I set Stone 24x16x12 inches Marked R T N^o 486, from which a pic, 4 inches diameter, bears S 24° E 37 links distant, Marked R T 486, 135

I hereby certify that the foregoing are true copy of the Field Notes of Survey of County Road N^o 486, as surveyed by me on the 15th and 16th day of April, 1897

John W Kimbrell
County Surveyor

Plan of Road N^o 486



I hereby certify that the above is a correct plat of Road N^o 486 as surveyed by me on the 15th and 16th days of April, 1897.

John W Kimbrell
County Surveyor of Umatilla
County, Oregon

Filed April 29th 1897
B S Burroughs Clerk

May 6 1897 B 106