

28	Thence	S 56° W	525	
29	"	S 25° W	412	987
30	"	S 64° W	734	1671

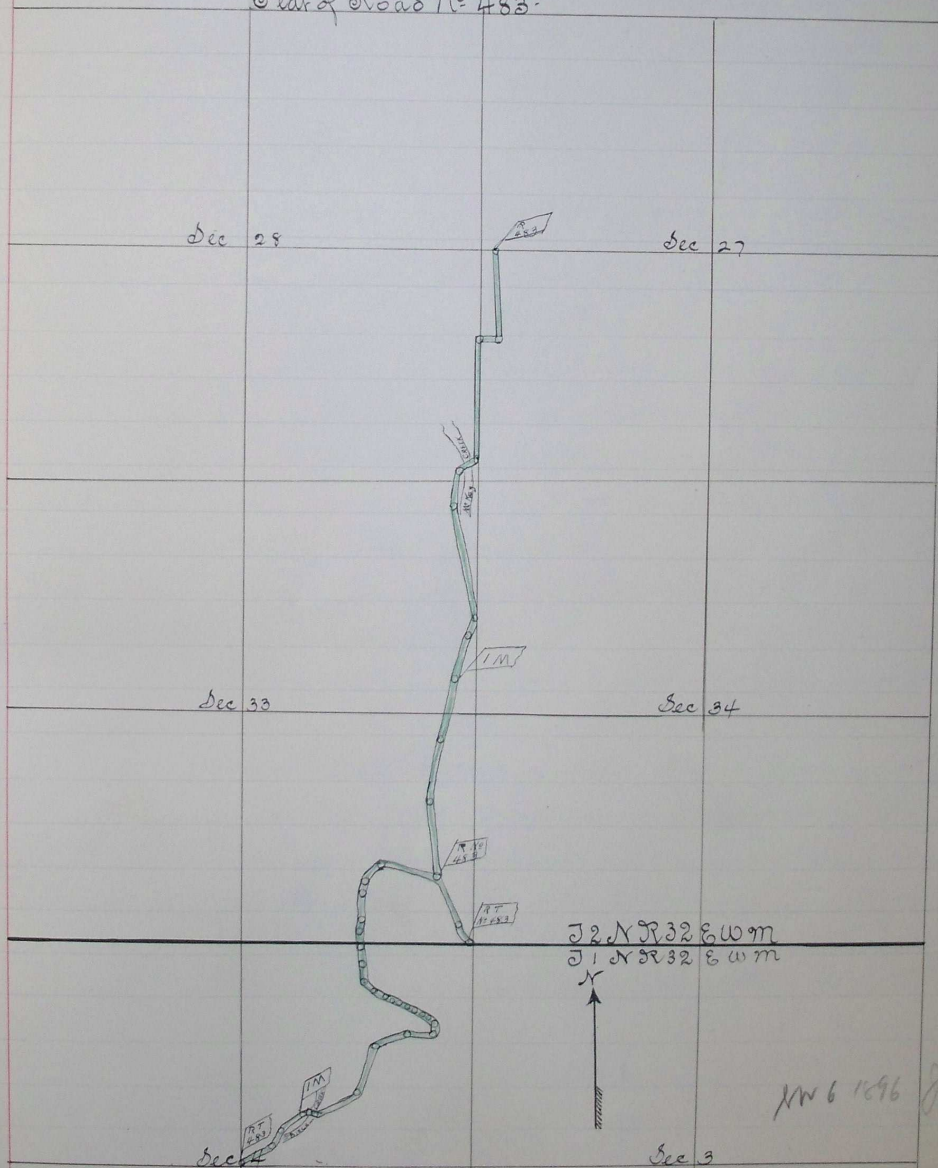
R T a point in the center of section 4 in T1 N R 32 E W M set post 4 feet long and 4 inches square 25 feet south of road terminus Marked R T N=483 dug pits East and West and built mound 18 inches high and 4 feet wide at base

This the 22<sup>nd</sup> day of September, 1896

I hereby certify that the foregoing is a correct copy of field notes of Road Survey N=483

John W Kimbrell  
County Surveyor for Umatilla County, Oregon

Plat of Road N=483



NW 6 1896 8629

I hereby certify that the above is a correct Plat of Road Survey N=483

Filed Oct 19th, 1896  
B. Burroughs, Clerk  
By Huger, Deputy

Scale 20 chains to 1

John W Kimbrell  
County Surveyor for Umatilla  
Co. Oregon

5 N M, Set post  
R T N=483,  
high and  
low, at a  
T 2 N R  
initial point,  
high 4 feet at base

marked 1 mile  
and 4