

'R J' raised mound of earth with pits E + W of post, all the above points and places being in Sec 17 T 1 N R 32 E W 77. The whole distance being 54.73 chains, and the whole distance of the present county road to be vacated is 46.00 chains

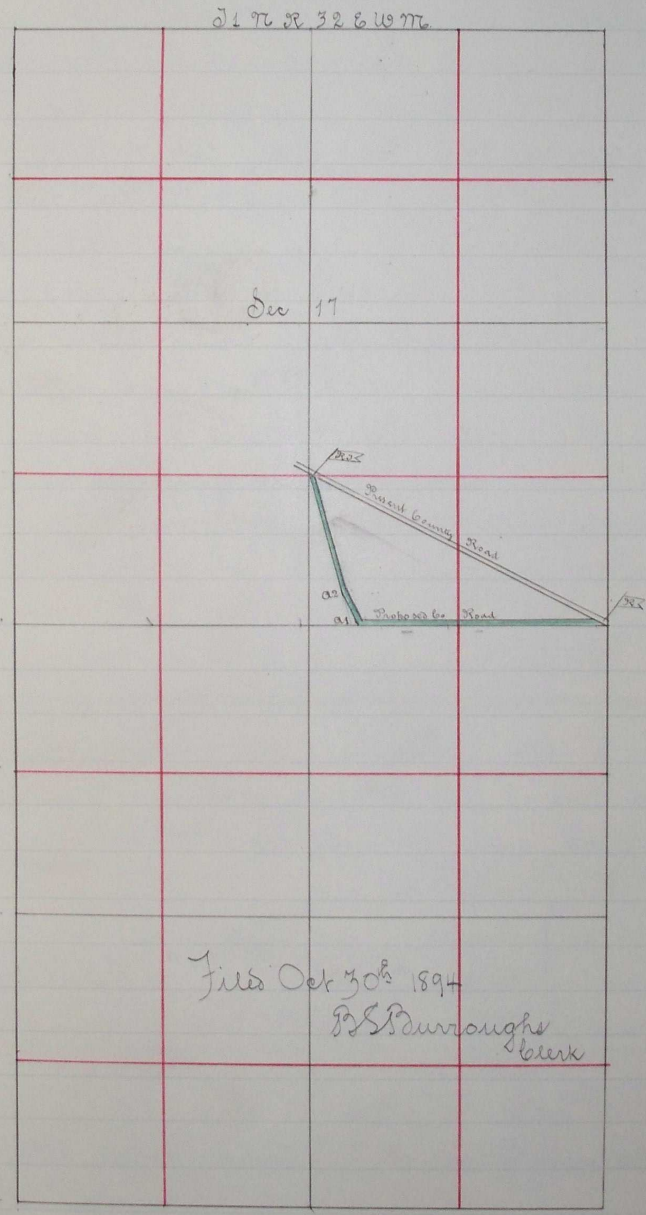
J W Kimbrell

Filed Oct 30th 1894

B S Burroughs, clerk

County Surveyor

Plat of County Road 77



Filed Oct 30th 1894

B S Burroughs
clerk

I hereby certify that the within field notes and accompanying plat is correct to the best of my belief

John W Kimbrell
County Surveyor

and
or near
running
in sec
intersecting
of the E 1/2
part of
ring and
wide
ted to
report:
met
houses on
duly
duties
Witlock
surveyor
said
same
side of
aterially
measured
it be
ood con-
urvey 77
theast
ur fast
of initial
ark and
set sec
1/2 chains
county
marked