

Laying

correct to the best of my knowledge and belief

John W Kimbrell
County Surveyor

Filed Oct 4th 1894

P. S. Burroughs, Clerk

by J. M. Leezer, deputy

corner of
city road
sterly about
in the
a county
the pro-
feet wide.

region

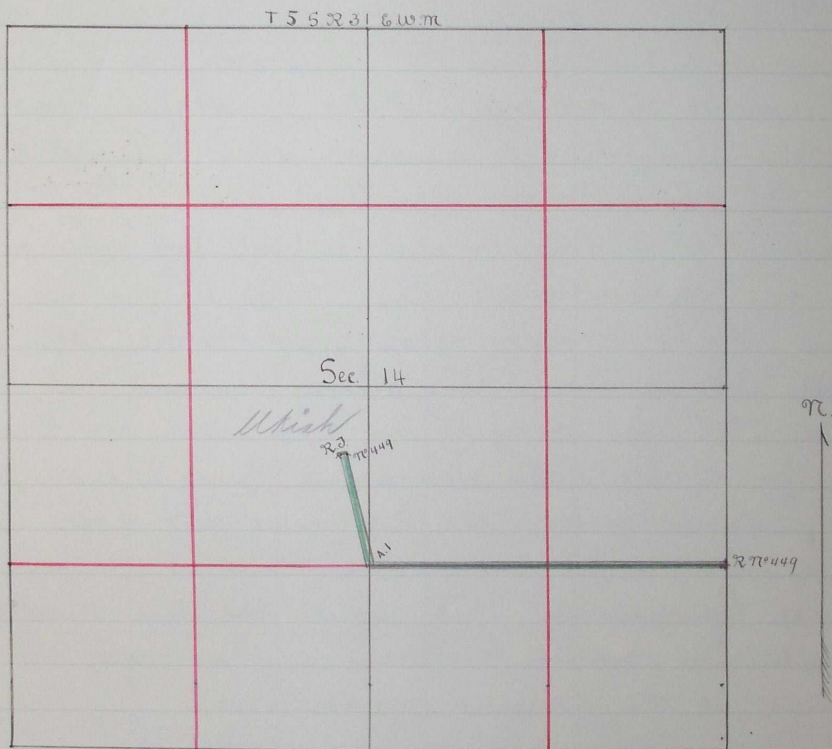
ointed to
report:
re met
24th 1894,
y and
ts. We
nman,
viewed
in our
would
clared

Viewers
Road Survey
No 449

t a point
to set
the ground
marked No 449

lba street
15 S range
square
feet wide

are



Nov 12 1894 J 245