

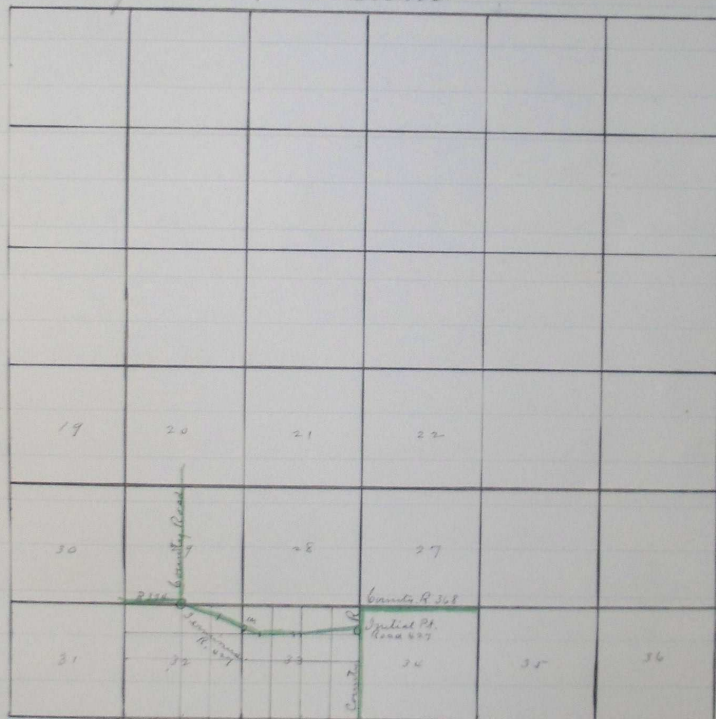
were
at House
Dalk.
chain
face

Plat of Road Survey No 427

I hereby certify that the following is a correct
plat of Road Survey No 427 for Amattille Co Ar.
Jno. C. Arnold. Surveyor.

" 3 "

Sp 3 NR 33 Com.



arked
ect
mety,

Filed July 12th 1893.
E. M. Pierce, Clerk.

U 547