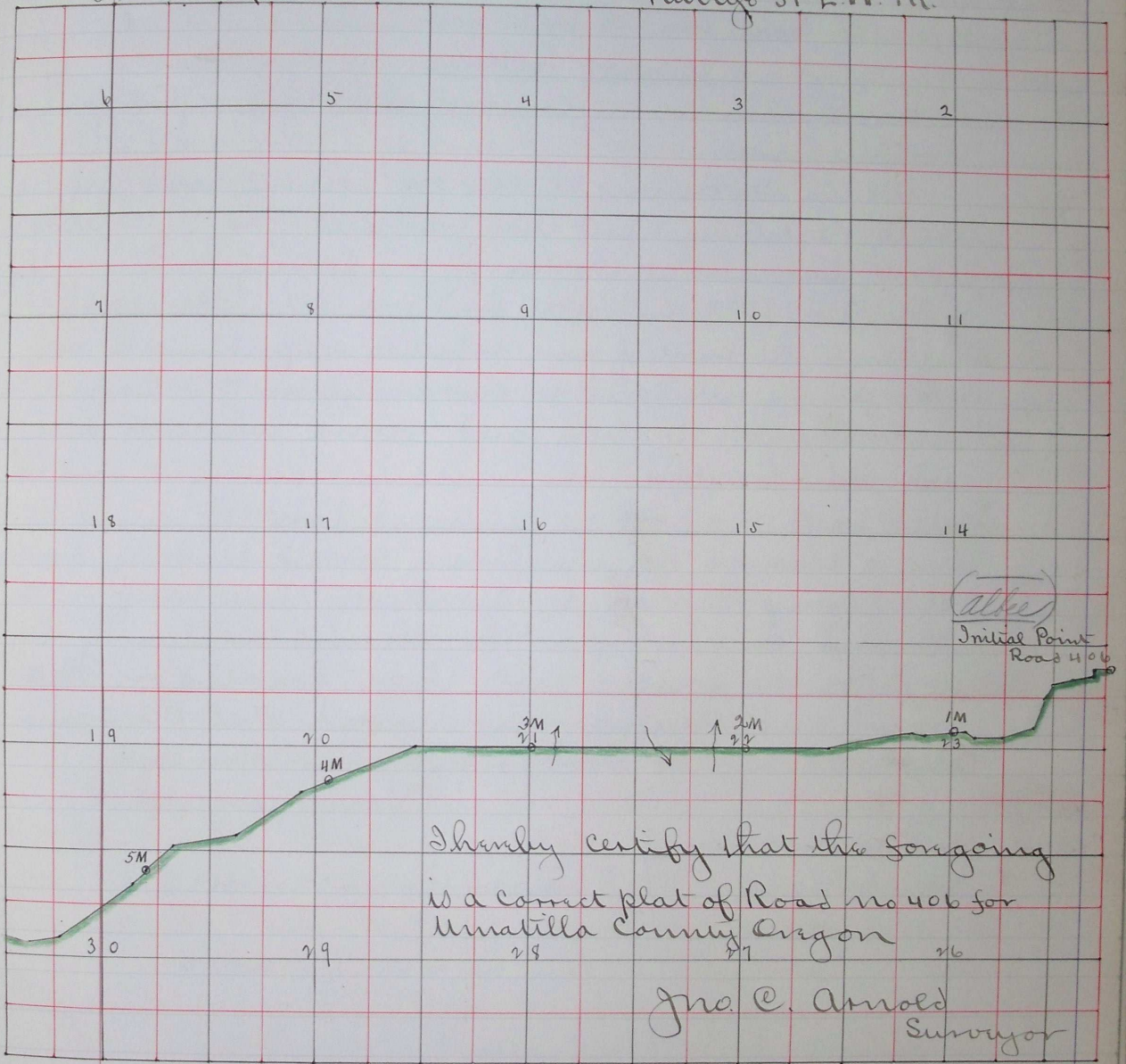


Township No 4 S.

Range 31 E. N. M.



I hereby certify that the foregoing  
 is a correct plat of Road No 406 for  
 Umatilla County Oregon

Jno. C. Arnold  
 Surveyor

Filed Nov 25<sup>th</sup> 1892 }  
 W. M. Pierce }  
 Clerk }

Nov 10 1892 1449