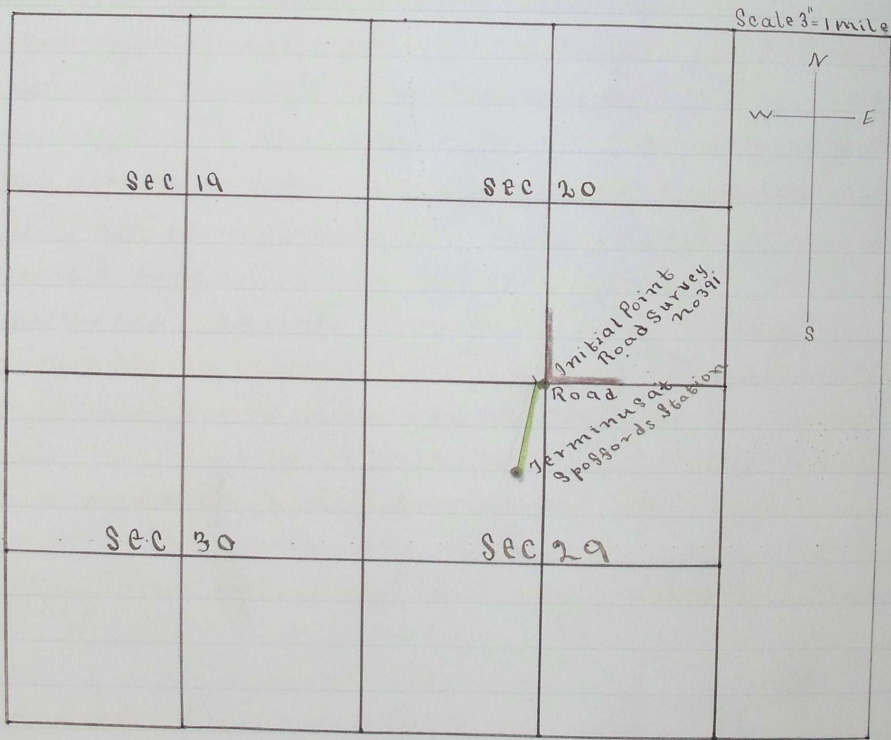


Plat of Road Survey No 391

I hereby certify the following to be a correct plat of Road Survey No 391 Township 6 N Range 36 E East of Willamette Meridian, as made by me June 18th 1892
Geo. C. Arnold
Surveyor for Umatilla County Oregon



Filed July 13-1892
W. M. Pierce
Clerk

304

ROAD NO
398.

3m
Com
Com
35 m
East o
Vern
Walle

Do it
for
we it

View
Purer
Comit
Angu
faith
an a
We c

who
Viewe
-cific
and it
comm
-way
Witne

Filed 8