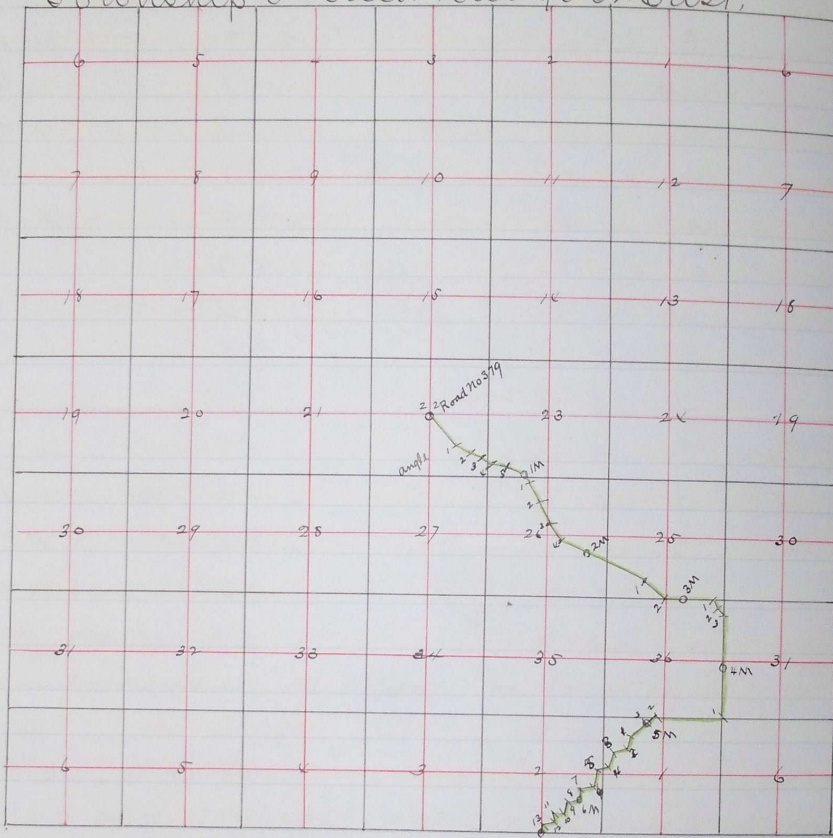


Township 5 South Range 32 East,



ROAD NO  
380

I hereby certify that the above is a correct general outline map of Road No 379 as surveyed by me Oct. 13<sup>th</sup> 14<sup>th</sup> and 16<sup>th</sup> 1891, to the best of my ability, with the mapping tools I have on hand.

Dated at Alva Oct 17<sup>th</sup> 1891,

L. F. Knight  
Surveyor,

Filed Nov. 2 1891  
W. M. Pierce Clerk.

J 77