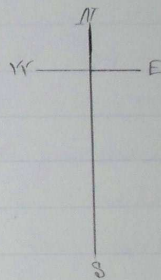
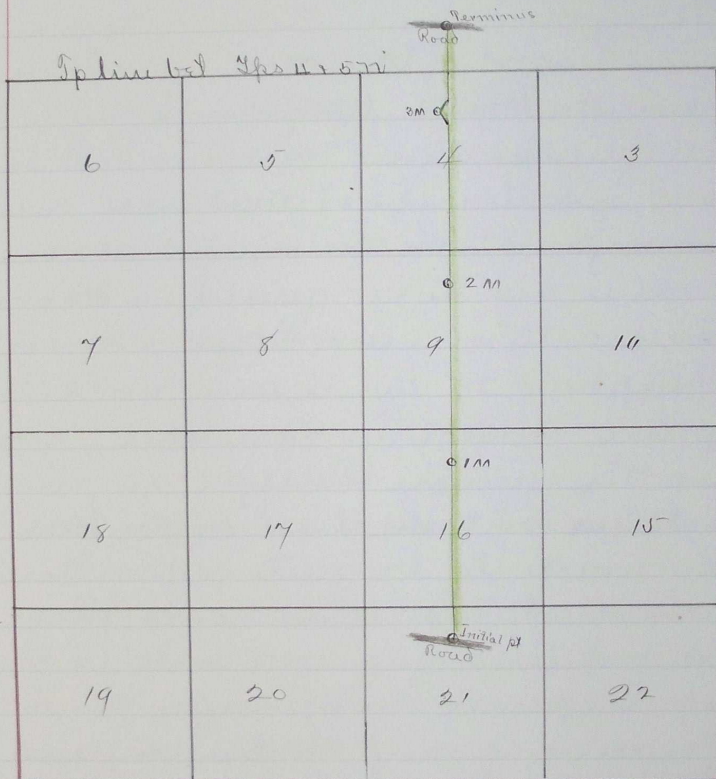


I hereby certify the following to be a correct plat  
of Road Survey cross Township 4<sup>n</sup> Range 32 East of  
Willamette Meridian as made by me April 17<sup>th</sup> 1890

Jno Arnold  
Surveyor for Multnomah Co Or



47 32

Filed May 4-1890 }  
Geo. Hartman Clerk