

East

- Along Sp. line, Descend
- 1500.. Ravine N. E. - 6
 - 650.. Descend
 - 750.. Ravine N. E.; Ascend
 - 950.. Summit; descend
 - 1350.. Gulch N. E.; abrupt ascent
 - 1700.. Summit
 - 2716.. Cor Sp. 374 N. on line bet. Rgs 29730 E.
 - 3800.. Descend
 - 5280.. Center of gulch in Stage Cañon
 - 5590.. Pendleton⁴⁰ Umatilla Wagon Road runs N 24° W
 - 5675.. Ascend abruptly
 - 5805.. 1/4 S. cor. bet. Secs. 67 31 on Sp. line bet. Sp. 374 N. R. 30 E. Set terminus in mound on bench

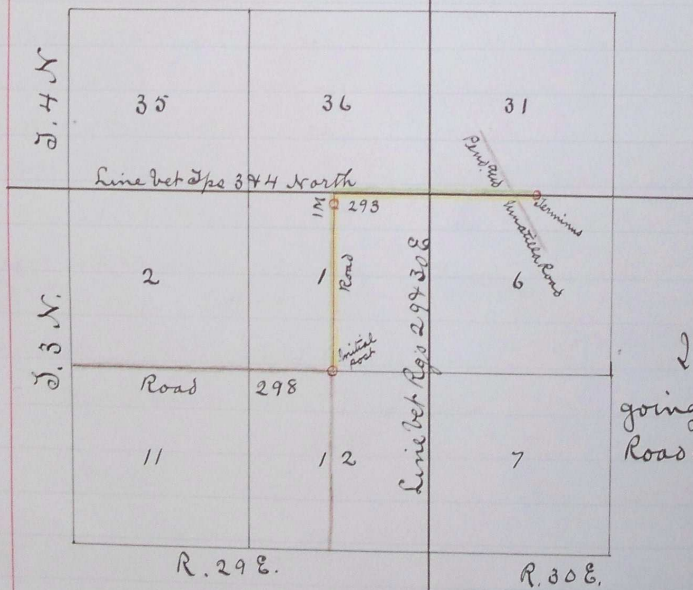
east side of cañon.

I hereby certify the foregoing field notes are correct.

Jno. C. Arnold

Surveyor.

Plat of County Road No 293



I hereby certify the foregoing to be a correct plat of County Road No 293

Jno C. Arnold. Survr.

Journal 4, page 5744
 " 4 " 629

Road Granted Sept 26" 1887

Recorded Jan 17" 1888

L. A. Hartman

Clerk

By J. H. Parkes, Deputy