

State: Oregon **County:** Umatilla **Station Name:** N6
Section: 35 **Township:** 6N **Range:** 30E **WM** **Date Found:** 7 Oct., 1997
Geodetic Datum: WGS 84 **Latitude:** N 45°57'38.18093" +/- 0.0047 m 2 sigma
 Longitude: W 119°01'48.31748" +/- 0.0038 m 2 sigma

SPCS Datum: NAD 83 (1991) **Northing:** 255952.5650 meters
 OREGON NORTH **Easting:** 2613937.5978 meters

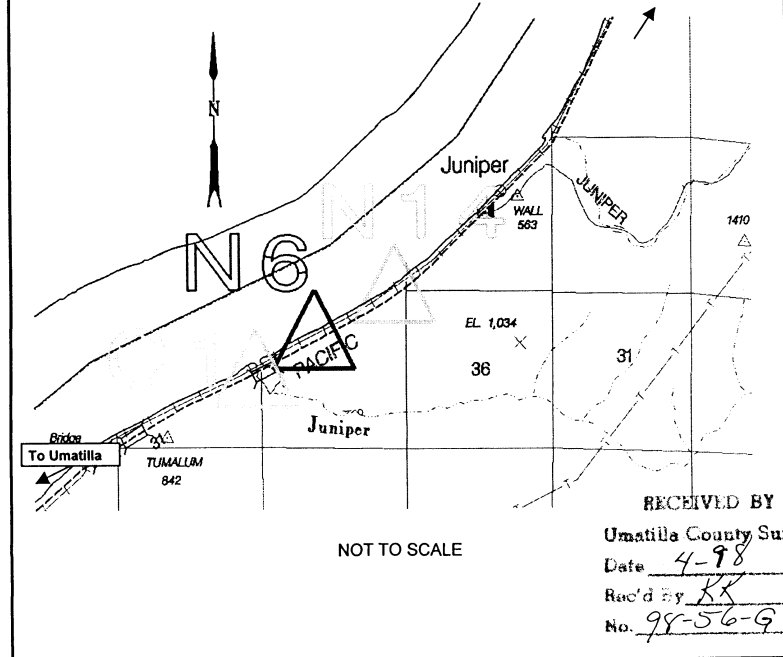
Convergence: + ° ' " **Conversion Factor:** .999981186

Vertical Datum: NGVD 1929/47 **Ortho. Height:** 107.275 m +/- m
 Orthometric Height from third order levels. **Ellips. Height:** N/A
 Seperation: N/A
Geoid Model: Geoid 96 **Geoid Height:** N/A

DIRECTIONS TO MONUMENT: To reach the station from the Jct. of State Highway 36 (Cold Springs Highway and US Route 730, go east on US Route 730 – 7.25 miles (approx.) to the station on the north (Approximately M.P. 200.8). The station is 4 meters north of the centerline of U.S Route 730.

Monument is on ODOT Right of Way – Permission is not needed to access this monument.

LOCATION SKETCH: Δ- MONUMENT



RECEIVED BY
 Umatilla County Surveyors
 Date 4-98
 Rec'd by KK
 No. 98-56-9

MONUMENT AND CAP DESCRIPTION:

Monument Type: Wood Size:
 Cap Type: Hub & Tack Size: 0.040M X 0.040M. Monument is flush with ground.

RECEIVED BY
 Umatilla County Surveyors
 Date 4-98
 Rec'd by KK
 No. 98-56-9