

NOTES

MONUMENTS SET IN N.W. 10TH, 11TH, & 12TH ARE SET FROM AN ADJUSTED, BALANCED CONTROL NET & BASED UPON ORIGINAL FOUND MONUMENTS TO THE NORTH & ON DESPAIN AVE. THE ORIGINAL HIGHWAY DATA IS USED FOR GARDEN R/W EXCEPT ALONG THE SOUTH LINE OF BROWN'S COURT ADDITION WHERE THE PLATTED R/W BASED ON FOUND MONUMENTS IS HELD AS TRUE. ALL BEARINGS SHOWN ARE BASED ON THE PENDLETON LOCAL GRID.

LEGEND

- X - STONE
- - VALVE BOX
- - BRASS CAP
- ▲ - R.R. SPIKE
- - IRON PIN
- - IRON PIPE
- - CIRCLED MONUMENTS SET PER THIS SURVEY

2032 10 B

CITY OF PENDLETON
ENGINEERING DEPT.

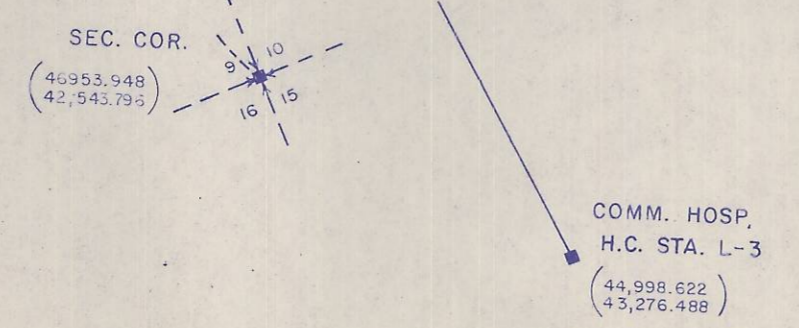
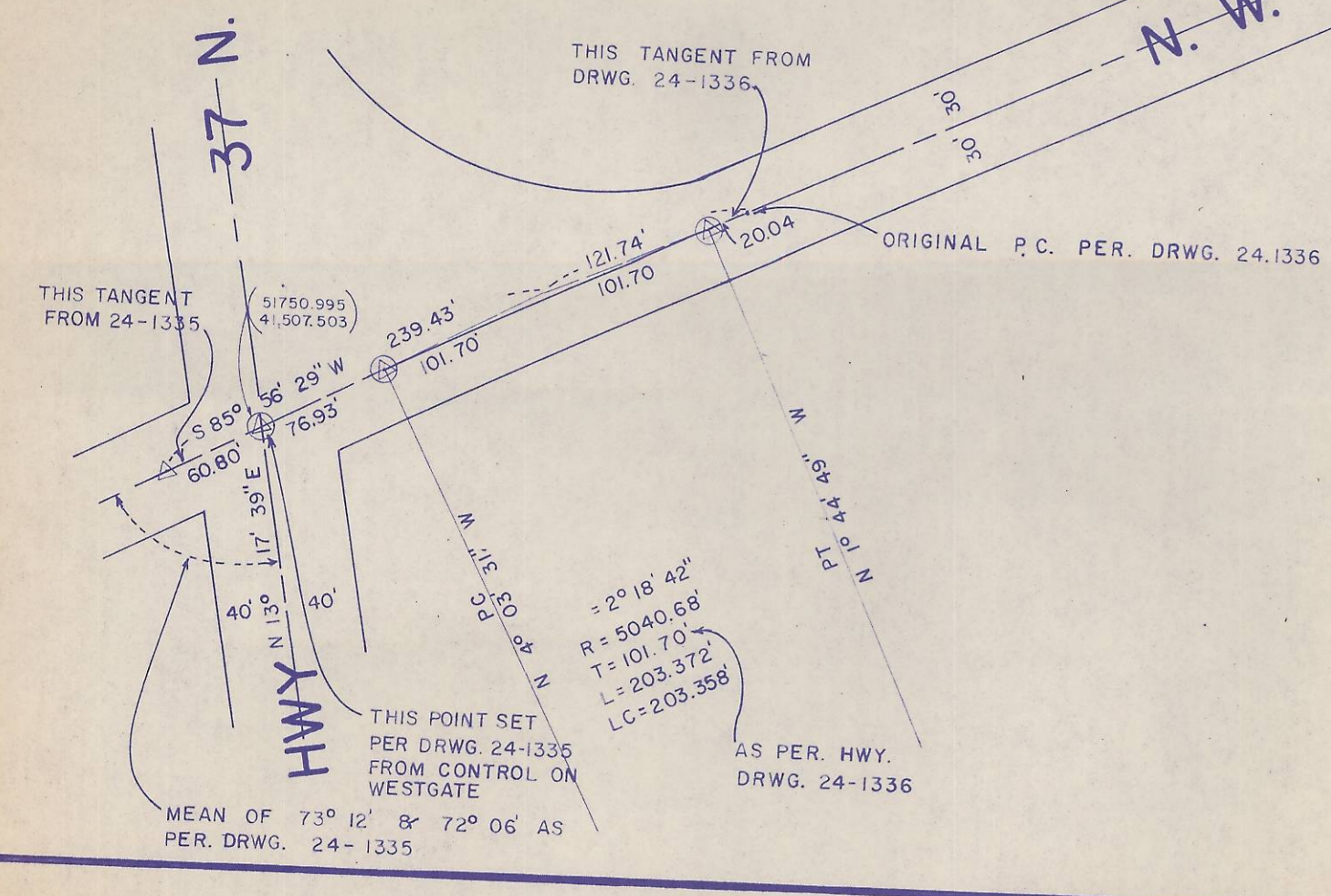
CONTROL SURVEY
N.W. GARDEN R/W

Q-299-C

| | | |
|---------------|----------------|------------------|
| DATE: 4-10-75 | SCALE: 1"=100' | SHEET 1 OF 2 |
| DN. DUB. | CKD. SW | DWG. NO. 24-7723 |

604 -
73-345C

Q-299-C



COMM. HOSP.
H.C. STA. L-3
(43,998.622)
(43,976.486)