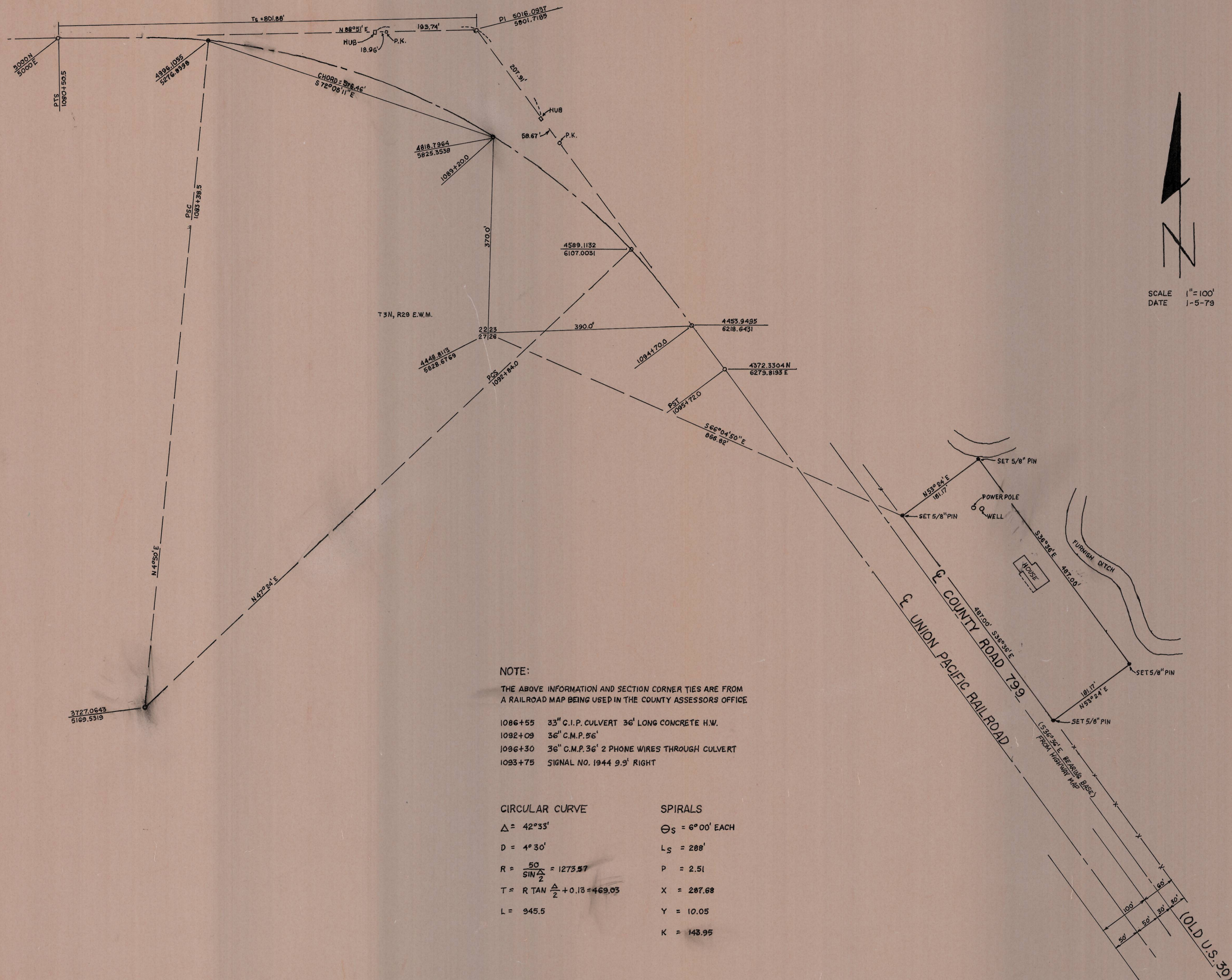


RECEIVED BY
 Umalla - county surv. job
 Date 1-5-79
 Rec'd By M. Hughes
 No. Q-9-C



NOTE:
 THE ABOVE INFORMATION AND SECTION CORNER TIES ARE FROM
 A RAILROAD MAP BEING USED IN THE COUNTY ASSESSORS OFFICE

1086+55 33" C.I.P. CULVERT 36' LONG CONCRETE H.W.
 1092+09 36" C.M.P. 56'
 1096+30 36" C.M.P. 36' 2 PHONE WIRES THROUGH CULVERT
 1093+75 SIGNAL NO. 1944 9.5' RIGHT

CIRCULAR CURVE SPIRALS

$\Delta = 42^\circ 33'$ $\Theta_s = 6^\circ 00'$ EACH
 $D = 4^\circ 30'$ $L_s = 288'$
 $R = \frac{50}{\sin \frac{\Delta}{2}} = 1273.57$ $P = 2.51$
 $T = R \tan \frac{\Delta}{2} + 0.13 = 469.05$ $X = 287.68$
 $L = 945.5$ $Y = 10.05$
 $K = 143.95$

REGISTERED PROFESSIONAL LAND SURVEYOR
Donald J. Staebler
 DONALD J. STAEBLER

NORPA DEVELOPMENT INC., HERMISTON, OREGON

SURVEY FOR
SWEDE RAMOS
 IN SECTION 26, T3N, R29 E.W.M.

DESIGN	D.S.	DATE	1-5-79	SCALE	1"=100'
DRAWN	C.E.	DATE		REV	

Staebler