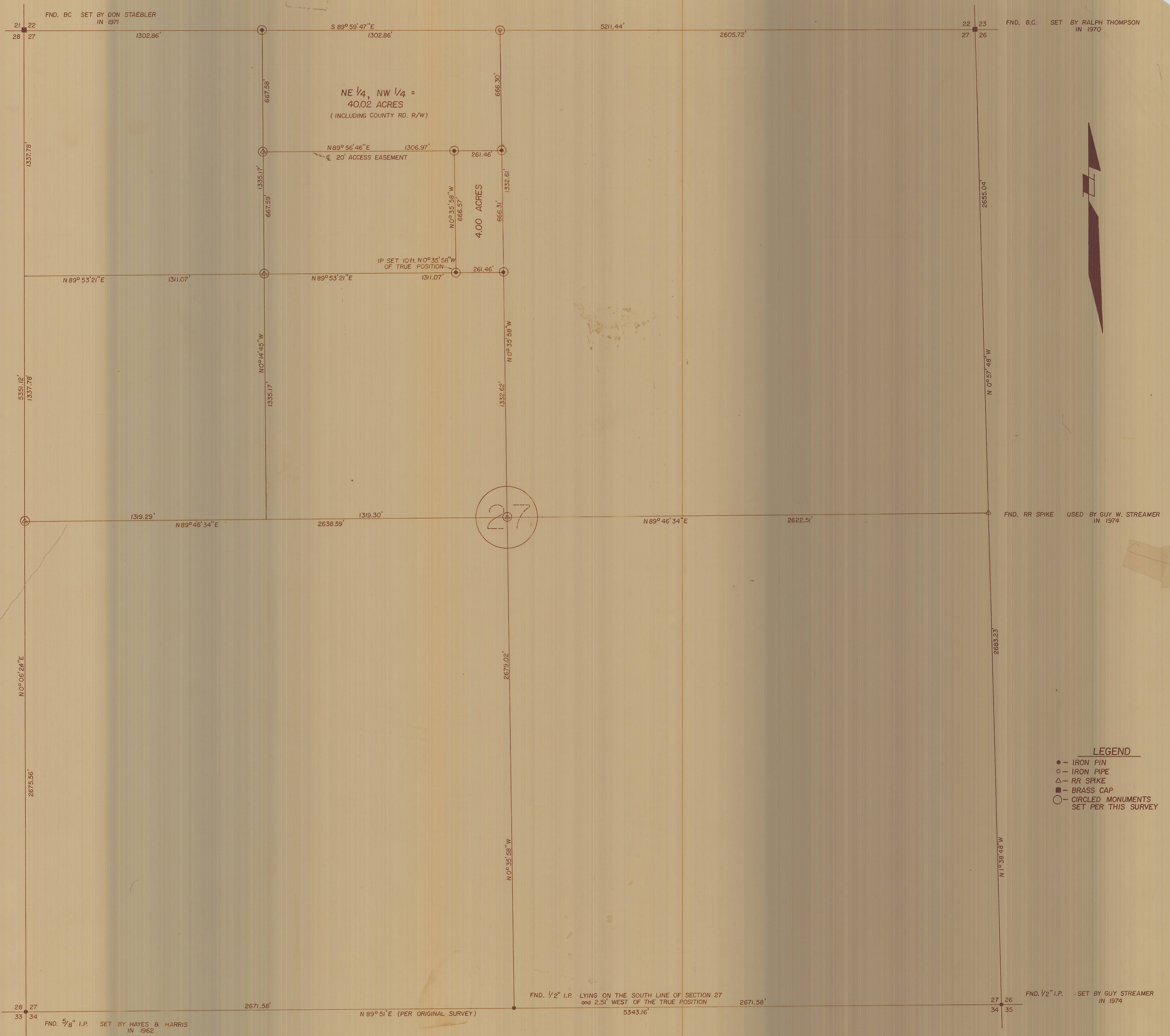


SURVEY FOR CHARLES AKES

NE 1/4, NW 1/4, SEC. 27, T. 6N, R. 35 E.W.M. - SCALE: 1" = 300'

JULY, 1977



- LEGEND**
- - IRON PIN
 - - IRON PIPE
 - △ - RR SPIKE
 - - BRASS CAP
 - - CIRCLED MONUMENTS SET PER THIS SURVEY

David J. Owen

NA-28-C