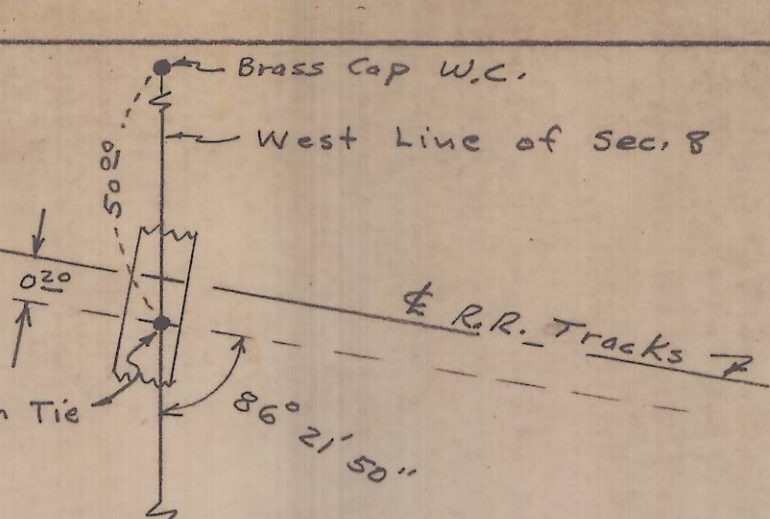


DETAIL SKETCH
NO SCALE



Fd. Brass cap on pipe to be witness corner 50' north of the N.W. Corner of the SW 1/4 of the NW 1/4 of Section 8, T2N, R33E.

Fd. Brass Cap on Pipe N.E. Corner of SW 1/4, NW 1/4 Section 8

Fd. Brass Cap on Pipe N.E. Corner of SE 1/4, NW 1/4 of Section 8, T2N, R33E.

(N 0° 04' W 1400.00 Thompson)
N 0° 12' 06" E 1399.19



SCALE: 1" = 100'
DATE: 1-18-73

N 89° 35' 55" W 2671.95
(N 89° 52' 20" W 2671.70 HARRIS 1962)
(N 89° 36' 30" W no Dist. Thompson 1962)

LEGEND

- - - - - - 1" X 30" Iron Pipe Set
- - - - - - Iron pin or pipe Found



I-34C

LAND SURVEY FOR
MIKE KILBY
IN SECTION 8, T2N, R33EWM

SCALE: 1" = 100' DATE: 1-18-73

DONALD L. STAEBLER
CONSULTING ENGINEER
PO BOX 91
PENDLETON, OREGON
97301