

RECORD OF SURVEY
 Within Sections 1, 2, 3, 4, 5, 6, 7, 8, 9, 10, 11, 12,
 13, 14, 15, 16, 17, 18, 19, 20, 21, 22, 23, & 24,
 Township 3 North, Range 30 East, W.M.,
 Umatilla County, Oregon

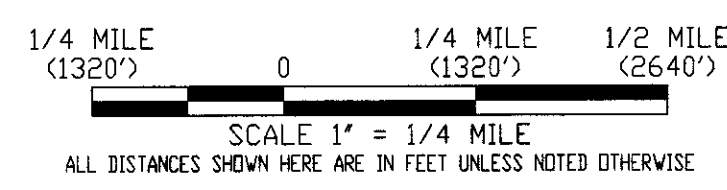
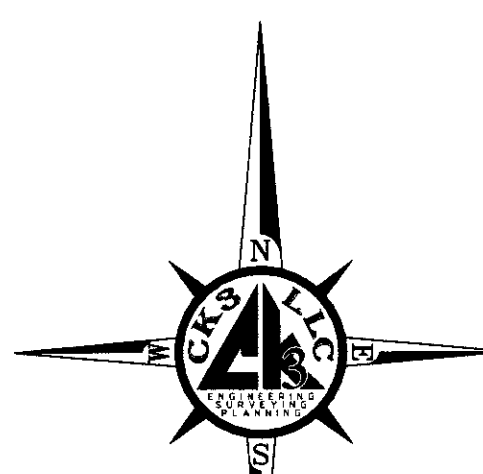
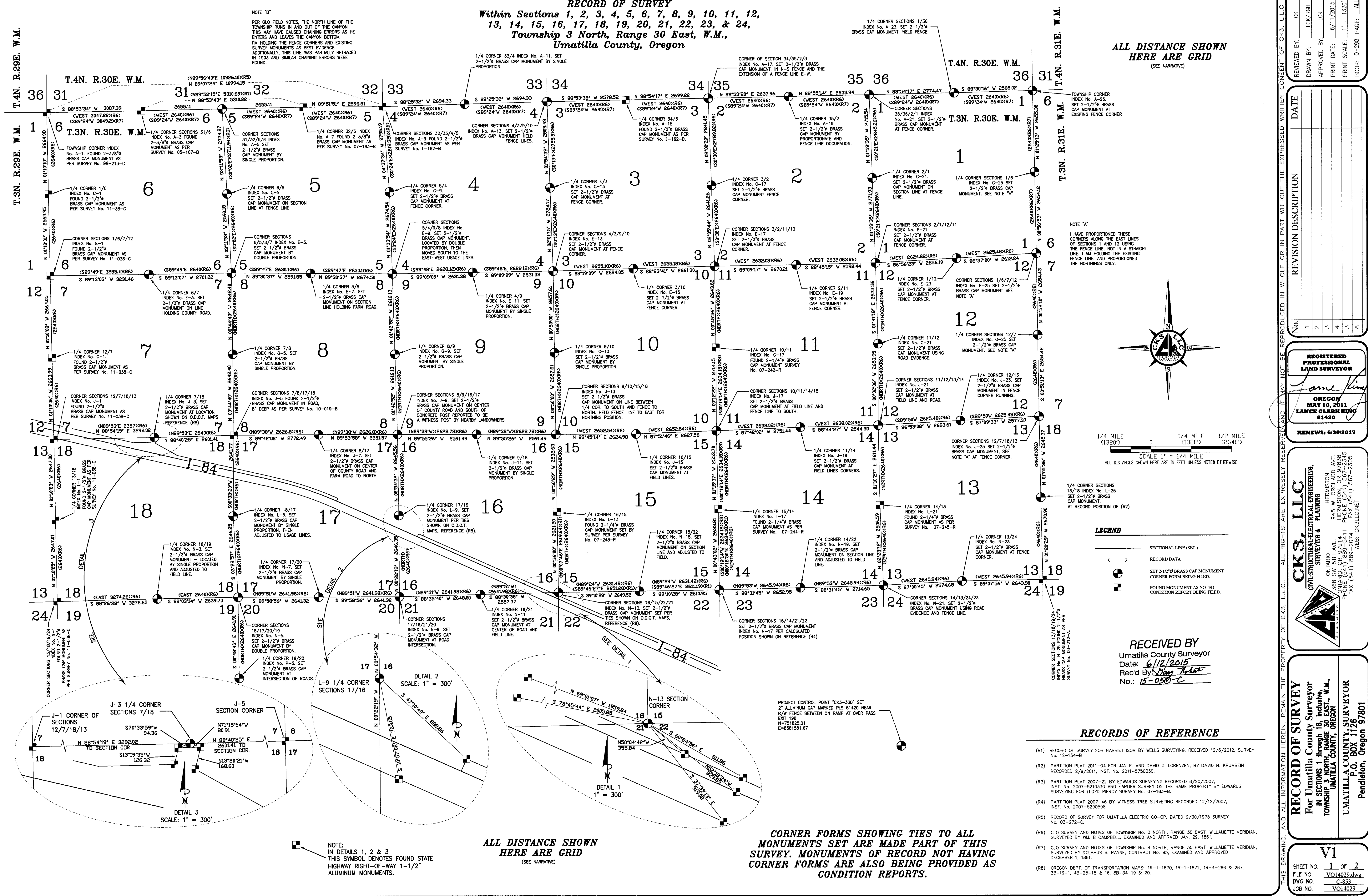
**ALL DISTANCE SHOWN
 HERE ARE GRID**
 (SEE NARRATIVE)

NOTE "B"

PER G.L.D. FIELD NOTES, THE NORTH LINE OF THE TOWNSHIP RUNS IN AND OUT OF THE CANYON THIS MAY HAVE CAUSED CHAINING ERRORS AS THE ENTERS AND LEAVES THE CANYON BOTTOM. I'M HOLDING THE FENCE CORNERS AND EXISTING SURVEY MONUMENTS AS BEST EVIDENCE. ADDITIONALLY, THIS LINE WAS PARTIALLY RETRACED IN 1903 AND SIMILAR CHAINING ERRORS WERE FOUND.

NOTE "A"

I HAVE PROPORTIONED THESE CORNERS ALONG THE EAST LINES OF SECTIONS 1 AND 12 USING THE FENCE LINE, NOT IN A STRAIGHT LINE. I AM HOLDING THE EXISTING FENCE LINE, AND PROPORTIONED THE NORTHINGS ONLY.



LEGEND

	SECTIONAL LINE (SEC.)
	RECORD DATA
	SET 2-1/2" BRASS CAP MONUMENT CORNER POSITION BEING FILED
	FOUND MONUMENT AS NOTED CONDITION REPORT BEING FILED

RECEIVED BY
 Umatilla County Surveyor
 Date: 6/12/2015
 Rec'd By: *Doug Fisher*
 No.: 15-050-C

RECORDS OF REFERENCE

- (R1) RECORD OF SURVEY FOR HARRIET ISOM BY WELLS SURVEYING, RECEIVED 12/6/2012, SURVEY No. 12-154-B
- (R2) PARTITION PLAT 2011-04 FOR JAN F. AND DAVID G. LORENZEN, BY DAVID H. KRUMBEIN RECORDED 2/9/2011, INST. No. 2011-5780330.
- (R3) PARTITION PLAT 2007-22 BY EDWARDS SURVEYING RECORDED 6/20/2007, INST. No. 2007-5210330 AND EARLIER SURVEY ON THE SAME PROPERTY BY EDWARDS SURVEYING FOR LLOYD PEIRCY SURVEY No. 07-183-B.
- (R4) PARTITION PLAT 2007-48 BY WITNESS TREE SURVEYING RECORDED 12/12/2007, INST. No. 2007-5290598.
- (R5) RECORD OF SURVEY FOR UMATILLA ELECTRIC CO-OP, DATED 9/30/1975 SURVEY No. 03-272-C.
- (R6) G.L.D. SURVEY AND NOTES OF TOWNSHIP No. 3 NORTH, RANGE 30 EAST, WILLAMETTE MERIDIAN, SURVEYED BY W.M. B. CAMPBELL, EXAMINED AND AFFIRMED JAN. 29, 1861.
- (R7) G.L.D. SURVEY AND NOTES OF TOWNSHIP No. 4 NORTH, RANGE 30 EAST, WILLAMETTE MERIDIAN, SURVEYED BY DOLPHUS S. PAYNE, CONTRACT No. 95, EXAMINED AND APPROVED DECEMBER 1, 1861.
- (R8) OREGON DEPT. OF TRANSPORTATION MAPS: 1R-1-1670, 1R-1-1672, 1R-4-266 & 267, 3R-19-1-1, 4R-25-15 & 16, 8R-34-19 & 20.

CORNER FORMS SHOWING TIES TO ALL MONUMENTS SET ARE MADE PART OF THIS SURVEY. MONUMENTS OF RECORD NOT HAVING CORNER FORMS ARE ALSO BEING PROVIDED AS CONDITION REPORTS.

**ALL DISTANCE SHOWN
 HERE ARE GRID**
 (SEE NARRATIVE)

NOTE:
 IN DETAILS 1, 2 & 3
 THIS SYMBOL DENOTES FOUND STATE HIGHWAY RIGHT-OF-WAY 1-1/2" ALUMINUM MONUMENTS.

REVIEWED BY:	LOK
DRAWN BY:	LOK/ROH
APPROVED BY:	LOK
PRINT DATE:	6/11/2015
PRINT SCALE:	1" = 1320'
BOOK:	0-388 PAGE: ALL

NO.	REVISION DESCRIPTION	DATE
1		
2		
3		
4		
5		
6		

REGISTERED PROFESSIONAL LAND SURVEYOR
James King
 OREGON
 MAY 10, 2011
 LANCE CLARK KING
 61420
 RENEWS: 6/30/2017

CKS, LLC
 CIVIL/STRUCTURAL/ELECTRICAL ENGINEERING, SURVEYING & PLANNING
 945 W. ORCHARD AVE.
 HERMISTON, OR 97838
 HERMISTON, OR 97838
 PHONE (541) 889-5411 PHONE (541) 567-2545
 FAX (541) 889-5411 WEB: CKS-LLC.NET

RECORD OF SURVEY
 For Umatilla County Surveyor
 IN SECTIONS 1 THROUGH 18, INCLUSIVE,
 TOWNSHIP 3 NORTH, RANGE 30 EAST, W.M.,
 UMATILLA COUNTY, OREGON
 UMATILLA COUNTY SURVEYOR
 P.O. BOX 1126
 Pendleton, Oregon 97801

V1

SHEET NO.	1 of 2
FILE NO.	VO14020.dwg
DWG. NO.	C853
JOB NO.	VO14029

INDEX NUMBERS, MONUMENT COORDINATES, DESCRIPTIONS & REFERENCE SURVEY

Table with columns: INDEX NUMBER, CORNER IDENTIFICATION, NORTHING, EASTING, MONUMENT DESCRIPTION, REFERENCE SURVEY. Contains index entries from A-1 to P-5.

RECORD OF SURVEY
Within Sections 1, 2, 3, 4, 5, 6, 7, 8, 9, 10, 11, 12,
13, 14, 15, 16, 17, 18, 19, 20, 21, 22, 23, & 24,
Township 3 North, Range 30 East, W.M.,
Umatilla County, Oregon

SURVEYOR'S NARRATIVE & CERTIFICATE

(CONTINUED)

THIS SURVEY WAS MADE AT THE REQUEST OF THE UMATILLA COUNTY SURVEYORS OFFICE UNDER A CONTRACT EXECUTED BY THE UMATILLA COUNTY BOARD OF COMMISSIONERS DATED MAY 19, 2014... THE REQUIREMENTS OF THIS SURVEY WERE TO PROVIDE SECOND ORDER NAD 83/91 STATE PLANE COORDINATES... I HAVE REPROPORTIONED THE CORNERS ALONG THE EAST LINES OF SECTIONS 1 AND 12... NOTE "A" REGARDING THE EAST TOWNSHIP LINE... NOTE "B" REGARDING THE NORTH TOWNSHIP LINE... SECTION 8 IN THIS TOWNSHIP WAS SUBDIVIDED IN 1885 AND A VARIETY OF MONUMENTS SET... SECTION 9 HAS TWO OLD GRAVEL PIT SURVEYS BY ODOT WITH TIES TO THE SOUTHEAST CORNER OF SECTION 9... THE PORTION OF THIS TOWNSHIP BEING SURVEYED HAS BEEN HEAVILY FARMED AND THE MAJORITY OF THE CORNER MONUMENTS PLACED HERE HAVE BEEN PLACED BY HOLDING FENCE LINES... A-1: I FOUND AND ACCEPTED A 2-1/2" BRASS CAP MONUMENT AS PER SURVEY NO. 98-213-C... A-3: I FOUND AND ACCEPTED A 2-1/2" BRASS CAP MONUMENT AS PER SURVEY NO. 05-167-B... A-5: I SET A 2-1/2" BRASS CAP MONUMENT BY SINGLE PROPORTION... A-7: I FOUND AND ACCEPTED A 2-1/2" BRASS CAP MONUMENT AS PER SURVEY NO. 07-183-B... A-9: I FOUND AND ACCEPTED A 2-1/2" BRASS CAP MONUMENT AS PER SURVEY NO. 1-162-B... A-11: I SET A 2-1/2" BRASS CAP MONUMENT BY SINGLE PROPORTION... A-13: I SET A 2-1/2" BRASS CAP MONUMENT AT THE EXTENSION OF A FENCE LINE FROM THE EAST INTERSECTING THE EXTENSION OF A NORTH-SOUTH FENCE LINE... A-15: I FOUND AND ACCEPTED A 2-1/2" BRASS CAP MONUMENT ON LINE BETWEEN THE 1/4 CORNER TO THE SOUTH AND OLD FENCE LINE TO THE NORTH... A-17: I SET A 2-1/2" BRASS CAP MONUMENT AT FIELD LINE TO WEST AND ROAD RUNNING NORTH-SOUTH AS PER COUNTY ROAD NOTES... A-19: I SET A 2-1/2" BRASS CAP MONUMENT AT PROPORTIONATE EASTINGS AND FENCE OCCUPATION LINES FOR NORTHINGS... A-21: I SET A 2-1/2" BRASS CAP MONUMENT ON LINE BETWEEN EXTENSION OF FENCES EAST AND WEST & AT THE EASTING LOCATION OF A FOUND 1-1/2" PIPE W/ CAP WELDED ON, ORIGIN OF PIPE UNKNOWN BUT IT FITS THE EAST-WEST USAGE LINE AND REMAINS OF OLD FENCE LINE... A-23: I SET A 2-1/2" BRASS CAP MONUMENT AT A FENCE CORNER RUNNING EAST AND SOUTH... A-25: I SET A 2-1/2" BRASS CAP MONUMENT FOR THE TOWNSHIP CORNER AT A FENCE CORNER RUNNING NORTH, SOUTH, EAST AND WEST... C-1: I FOUND AND ACCEPTED A 2-1/2" BRASS CAP MONUMENT AS PER SURVEY NO. 11-038-C... C-3: I SET A 2-1/2" BRASS CAP MONUMENT BY SINGLE PROPORTION... C-5: I SET A 2-1/2" BRASS CAP MONUMENT ON THE SECTION LINE USING A FENCE LINE RUNNING EAST-WEST FOR NORTHINGS... C-7: I SET A 2-1/2" BRASS CAP MONUMENT IN A EAST-WEST FENCE LINE AND AT OLD CORNER POST FOR FENCE RUNNING SOUTH... C-9: I SET A 2-1/2" BRASS CAP MONUMENT AT THE INTERSECTION OF A FENCE, N-S-W... C-11: I SET A 2-1/2" BRASS CAP MONUMENT AT THE INTERSECTION OF A FENCE, N-W & USAGE LINES/OLD FENCE LINE TO THE SOUTH... C-13: I SET A 2-1/2" BRASS CAP MONUMENT ON SECTION LINE, USING A EAST-WEST FENCE FOR NORTHINGS... C-15: I SET A 2-1/2" BRASS CAP MONUMENT AT PROPORTIONAL NORTHINGS, USING AN EXISTING FENCE LINE FOR EASTINGS. SEE NOTE "A" ABOVE... C-17: I FOUND AND ACCEPTED A 2-1/2" BRASS CAP MONUMENT AS PER SURVEY NO. 11-038-C... E-3: I SET A 2-1/2" BRASS CAP MONUMENT ON THE SECTION LINE, USING THE CENTERLINE OF AN EXISTING ROAD FOR EASTINGS, AS PER COUNTY ROAD NOTES... E-5: I SET A 2-1/2" BRASS CAP MONUMENT BY DOUBLE PROPORTION. BK. 1 PG. 104-105 INDICATES A MOUND... E-7: I SET A 2-1/2" BRASS CAP MONUMENT ON THE SECTION LINE, USING THE CENTERLINE OF AN EXISTING FARM ROAD FOR EASTINGS. BK. 1 PG. 104 INDICATES A ROCK, THE ROCK WAS SEARCHED FOR BUT NOT RECOVERED... E-9: I SET A 2-1/2" BRASS CAP MONUMENT BY CALCULATING THE POSITION BY DOUBLE PROPORTION, AND THEN MOVING SOUTH TO THE EAST-WEST USAGE LINES... E-11: I SET A 2-1/2" BRASS CAP MONUMENT BY SINGLE PROPORTION... E-13: I SET A 2-1/2" BRASS CAP MONUMENT AT OLD WOOD CORNER POST IN FENCE CORNER RUNNING NORTH AND EAST. BK. 1 PG. 493-494 INDICATES A MOUND... E-15: I SET A 2-1/2" BRASS CAP MONUMENT IN A EAST-WEST FENCE LINE AND OLD CORNER POST FOR FENCE LINE RUNNING TO SOUTH... E-17: I SET A 2-1/2" BRASS CAP MONUMENT AT FENCE CORNER RUNNING EAST-WEST AND NORTH... E-19: I SET A 2-1/2" BRASS CAP MONUMENT AT A RAIL ROAD FENCE CORNER, FENCE RUNNING EAST-WEST AND SOUTH. BK. 1 PG. 493-494 INDICATES A FOUND MONUMENT BUT HAS NO DESCRIPTION, MONUMENT SEARCHED FOR BUT NOT RECOVERED... E-21: I SET A 2-1/2" BRASS CAP MONUMENT AT RAIL ROAD FENCE CORNER, FENCE RUNNING EAST-WEST AND NORTH. BK. 1 PG. 167 INDICATES A STONE, THE STONE WAS SEARCHED FOR BUT NOT FOUND.

E-23: I SET A 2-1/2" BRASS CAP MONUMENT AT RAIL ROAD FENCE CORNER, FENCE RUNNING NORTH AND WEST... E-25: I SET A 2-1/2" BRASS CAP MONUMENT NEXT TO 20"X13"X14" LAVA ROCK IN FENCE LINE. SEE NOTE "A" ABOVE. BK. 1 PG. 493-494 INDICATES A MONUMENT BUT NO DESCRIPTION, THE STONE MAY BE THE CORNER. THE PROPORTIONED POSITION AGREED WITH THE STONE WELL... G-1: I FOUND AND ACCEPTED A 2-1/2" BRASS CAP MONUMENT AS PER SURVEY NO. 11-038-C... G-3: I SET A 2-1/2" BRASS CAP MONUMENT BY SINGLE PROPORTION... G-5: I SET A 2-1/2" BRASS CAP MONUMENT BY SINGLE PROPORTION... G-7: I SET A 2-1/2" BRASS CAP MONUMENT BY SINGLE PROPORTION... G-9: I SET A 2-1/2" BRASS CAP MONUMENT BY SINGLE PROPORTION... G-11: I SET A 2-1/2" BRASS CAP MONUMENT BY SINGLE PROPORTION... G-13: I SET A 2-1/2" BRASS CAP MONUMENT BY SINGLE PROPORTION... G-15: I FOUND AND ACCEPTED A 2-1/4" BRASS CAP MONUMENT AS PER SURVEY NO. 07-242-R... G-17: I FOUND AND ACCEPTED A 2-1/4" BRASS CAP MONUMENT AS PER SURVEY NO. 07-242-R... G-19: I SET A 2-1/2" BRASS CAP MONUMENT AT THE LOCATION OF A ROAD INTERSECTION, THE ROAD WANDERS IN THIS LOCATION AND AFTER LOCATING THE ROAD I COMPUTED A MEAN LOCATION AND SET THE MONUMENT AS PER COUNTY ROAD NOTES... G-21: I SET A 2-1/2" BRASS CAP MONUMENT A PROPORTIONAL NORTHINGS, USING AN EXISTING FENCE LINE FOR EASTINGS. SEE NOTE "A" ABOVE... G-23: I SET A 2-1/2" BRASS CAP MONUMENT AT PROPORTIONAL NORTHINGS, USING AN EXISTING FENCE LINE FOR EASTINGS. SEE NOTE "A" ABOVE... H-1: I FOUND AND ACCEPTED A 2-1/2" BRASS CAP MONUMENT AS PER SURVEY NO. 11-038-C... H-3: I SET A 2-1/2" BRASS CAP MONUMENT BY DATA SHOWN ON O.D.O.T. MAPS, REFERENCE (R8), BY CALCULATING THE COORDINATES OF CENTERLINE OF THE HIGHWAY AND LAYING OUT THE RIGHT-OF-WAY MONUMENT LOCATIONS AS SHOWN ON THE MAP, THE CLOSEST MONUMENTS TO THE CORNER WERE TIED AND THEN THE HIGHWAY DATA WAS SCALED AND ROTATED TO THIS SURVEY AND THE CORNER MONUMENT WAS ESTABLISHED... H-5: I FOUND AND ACCEPTED A 2-1/2" BRASS CAP MONUMENT AS PER SURVEY NO. 10-019-B... H-7: I SET A 2-1/2" BRASS CAP MONUMENT IN THE CENTER OF THE COUNTY ROAD AS PER COUNTY ROAD NOTES AND AT THE INTERSECTION WITH A FARM ROAD TO THE NORTH... H-9: I SET A 2-1/2" BRASS CAP MONUMENT ON CENTER OF COUNTY ROAD AS PER COUNTY ROAD NOTES AND SOUTH OF CONCRETE POST REPORTED TO BE A WITNESS POST BY NEARBY LANDOWNERS... H-11: I SET A 2-1/2" BRASS CAP MONUMENT BY SINGLE PROPORTION... H-13: I SET A 2-1/2" BRASS CAP MONUMENT ON LINE BETWEEN THE 1/4 CORNER TO THE SOUTH AND OLD FENCE LINE TO THE NORTH, I HELD AN OLD FENCE LINE TO THE EAST FOR THE NORTH-SOUTH POSITION... H-15: I SET A 2-1/2" BRASS CAP MONUMENT AT DIVISION OF FIELD LINE RUNNING EAST-WEST AND FILED LINE TO NORTH... H-17: I SET A 2-1/2" BRASS CAP MONUMENT IN A EAST-WEST FIELD LINE AND OLD FENCE LINE TO SOUTH... H-19: I SET A 2-1/2" BRASS CAP MONUMENT AT FIELD LINES/USAGE RUNNING EAST-WEST AND SOUTH... H-21: I SET A 2-1/2" BRASS CAP MONUMENT AT FIELD LINE TO WEST AND ROAD RUNNING NORTH-SOUTH AS PER COUNTY ROAD NOTES... H-23: I SET A 2-1/2" BRASS CAP MONUMENT AT FENCE CORNER RUNNING EAST AND SOUTH... H-25: I SET A 2-1/2" BRASS CAP MONUMENT IN FENCE CORNER RUNNING NORTH AND EAST SEE NOTE "A" SHEET 1 OF 2. A SCATTERED MOUND OF STONE WAS FOUND AT THIS LOCATION... I-1: I FOUND AND ACCEPTED A 2-1/2" BRASS CAP MONUMENT AS PER SURVEY NO. 11-038-C... I-3: I SET A 2-1/2" BRASS CAP MONUMENT BY SINGLE PROPORTIONING THE NORTHING AND THEN ADJUSTED WEST TO THE NORTH-SOUTH FENCE/USAGE LINES... I-5: I SET A 2-1/2" BRASS CAP MONUMENT PER TIES SHOWN ON O.D.O.T. MAPS, REFERENCE (R8), BY CALCULATING THE COORDINATES OF CENTERLINE OF THE HIGHWAY AND LAYING OUT THE RIGHT-OF-WAY MONUMENT LOCATIONS AS SHOWN ON THE MAP, THE CLOSEST MONUMENTS TO THE CORNER WERE TIED AND THEN THE HIGHWAY DATA WAS SCALED AND ROTATED TO THIS SURVEY AND THE CORNER MONUMENT WAS ESTABLISHED... I-7: I FOUND AND ACCEPTED A 2-1/4" BRASS CAP MONUMENT AS PER SURVEY NO. 07-243-R... I-9: I FOUND AND ACCEPTED A 2-1/4" BRASS CAP MONUMENT AS PER SURVEY NO. 07-244-R... I-11: I FOUND AND ACCEPTED A 2-1/4" BRASS CAP MONUMENT AS PER SURVEY NO. 07-243-R... I-13: I SET A 2-1/2" BRASS CAP MONUMENT AT THE RECORD POSITION OF (R2). AFTER LOCATING THE MAJORITY OF THE MONUMENTS AS SHOWN IN (R2) AND SEARCHING FOR THIS MONUMENT, THE RECORD MONUMENT WAS NOT FOUND, IT MAY HAVE BEEN GRADED OUT WHILE MAINTAINING THE COUNTY ROAD... I-15: I FOUND AND ACCEPTED A 2-1/2" BRASS CAP MONUMENT AS PER SURVEY NO. 11-038-C... I-17: I SET A 2-1/2" BRASS CAP MONUMENT BY SINGLE PROPORTIONING THE EASTINGS AND THEN ADJUSTING TO FIELD USAGE LINES... I-19: I SET A 2-1/2" BRASS CAP MONUMENT BY DOUBLE PROPORTION... I-21: I SET A 2-1/2" BRASS CAP MONUMENT BY SINGLE PROPORTION... I-23: I SET A 2-1/2" BRASS CAP MONUMENT AT THE INTERSECTION OF COUNTY ROADS RUNNING NORTH-SOUTH AND EAST AS PER COUNTY ROAD NOTES... I-25: I SET A 2-1/2" BRASS CAP MONUMENT AT THE CENTER OF AN EXISTING EAST-WEST COUNTY ROAD AS PER COUNTY ROAD NOTES AND FIELD LINE TO THE SOUTH... J-1: I SET A 2-1/2" BRASS CAP MONUMENT PER TIES SHOWN ON O.D.O.T. MAPS, REFERENCE (R8), BY CALCULATING THE COORDINATES OF CENTERLINE OF THE HIGHWAY AND LAYING OUT THE RIGHT-OF-WAY MONUMENT LOCATIONS AS SHOWN ON THE MAP, THE CLOSEST MONUMENTS TO THE CORNER WERE TIED AND THEN THE HIGHWAY DATA WAS SCALED AND ROTATED TO THIS SURVEY AND THE CORNER MONUMENT WAS ESTABLISHED... J-3: I SET A 2-1/2" BRASS CAP MONUMENT ON THE SECTION LINE, AND ADJUSTED THE EAST-WEST LOCATION TO THE NORTH-SOUTH FIELD LINE... J-5: I SET A 2-1/2" BRASS CAP MONUMENT AT THE CALCULATED POSITION SHOWN ON SURVEY REFERENCE (R4). THIS LOCATION FITS THE GENERAL WANDERING USAGE LINES IN THE AREA... J-7: I SET A 2-1/2" BRASS CAP MONUMENT ON THE SECTION LINE AND ADJUSTED TO THE FIELD DIVISION LINE RUNNING NORTH AND SOUTH... J-9: I SET A 2-1/2" BRASS CAP MONUMENT AT THE EXTENDED INTERSECTION OF A NORTH-SOUTH ROAD, AS PER COUNTY ROAD NOTES AND A FENCE LINE TO THE EAST, THE COUNTY ROAD WANDERS AT THIS LOCATION BUT IS STRAIGHT TO THE NORTH AND SOUTH OF THIS LOCATION, THE MONUMENT FALLS AT THE EDGE OF THE ROAD... J-11: I SET A 2-1/2" BRASS CAP MONUMENT AT FENCE CORNER - FENCE RUNS SOUTH AND WEST... J-13: I FOUND AND ACCEPTED A 2-1/2" BRASS CAP MONUMENT AS PER SURVEY NO. 03-212-A... J-15: I SET A 2-1/2" BRASS CAP MONUMENT IN THE INTERSECTION OF FARM ROADS, REPORTED TO BE ON THE SECTION LINES BY NEARBY LANDOWNERS... K-1: LANCE C. KING, A PROFESSIONAL LAND SURVEYOR REGISTERED IN THE STATE OF OREGON, DO HEREBY CERTIFY THAT THE FIRST MONUMENT ESTABLISHING A PUBLIC LAND SURVEY CORNER WAS PLACED ON 3/10/2015 AND THAT FROM THAT DATE FORWARD CORNER FORMS WERE FILED WITH THE UMATILLA COUNTY SURVEYOR EVERY 45 DAYS FOLLOWING, THAT THIS SURVEY WAS MADE BY ME, OR UNDER MY DIRECTION, THAT ALL PROPERTY ACCESSED IN THIS SURVEY WAS DONE IN ACCORDANCE WITH ORS 67.027 THAT THE MONUMENTS ARE AS SHOWN AND THAT THIS MAP IS A TRUE AND ACCURATE REPRESENTATION OF SAID SURVEY.

CORNER FORMS SHOWING TIES TO ALL MONUMENTS SET ARE MADE PART OF THIS SURVEY. MONUMENTS OF RECORD NOT HAVING CORNER FORMS ARE ALSO BEING PROVIDED AS CONDITION REPORTS.

RECEIVED BY
Umatilla County Surveyor
Date: 6/12/2015
Rec'd By: [Signature]
No.: 15-050-C

Administrative forms including: REVISION DESCRIPTION table, REGISTERED PROFESSIONAL LAND SURVEYOR stamp for Lance Clark King, CIVIL/STRUCTURAL/ELECTRICAL ENGINEERING, SURVEYING & PLANNING stamp for CKS, LLC, RECORD OF SURVEY stamp, and V1 SHEET NO. 2 OF 2 stamp.