

S. E. DORION

(Formerly Alta Street)
N66°24'E

AVENUE

ORIGINAL

TOWN

STREET

STREET

SOUTH

PENDLETON

(Formerly College)
N 23° 52' W

(Formerly Mill)

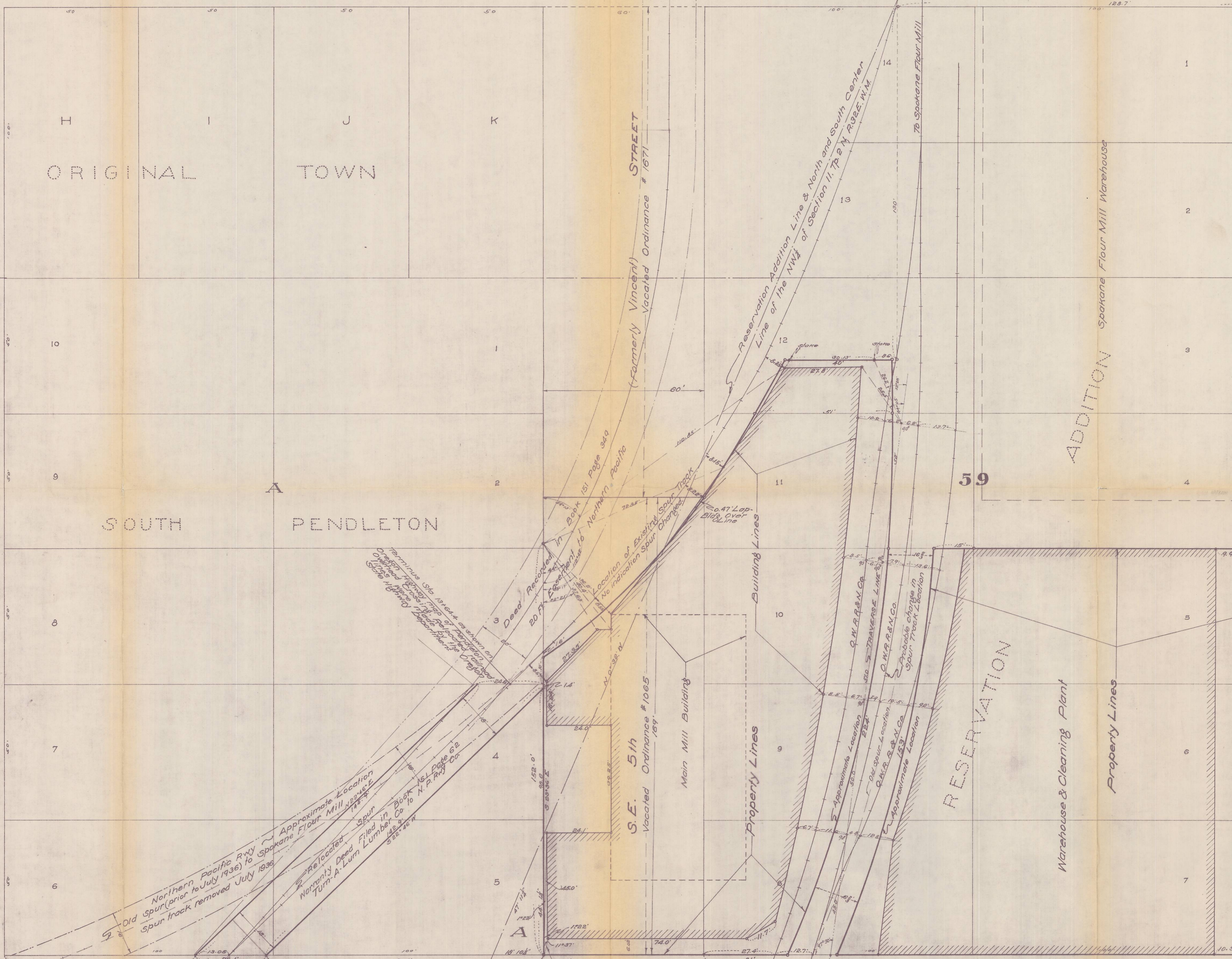
S. E. 4th

S. E. 6th

S. E. EMIGRANT

(Formerly Webb Street)
N66° 24' E

AVENUE



PROPERTY & SPUR MAP
OF
COLLINS FLOUR MILLS
PENDLETON, OREGON.
Scale: 1 inch = 20 Feet May 28-41
Surveyed by: Frank B. Hayes, Co. Surv.
Drawn by: G. E. Guderian, The Engr.
Hartman Abstr. Co.

RECEIVED BY
Umatilla County Surveyor
Date: 2/8/13
Rec'd By: J. A. Ales
No.: 13-057-C