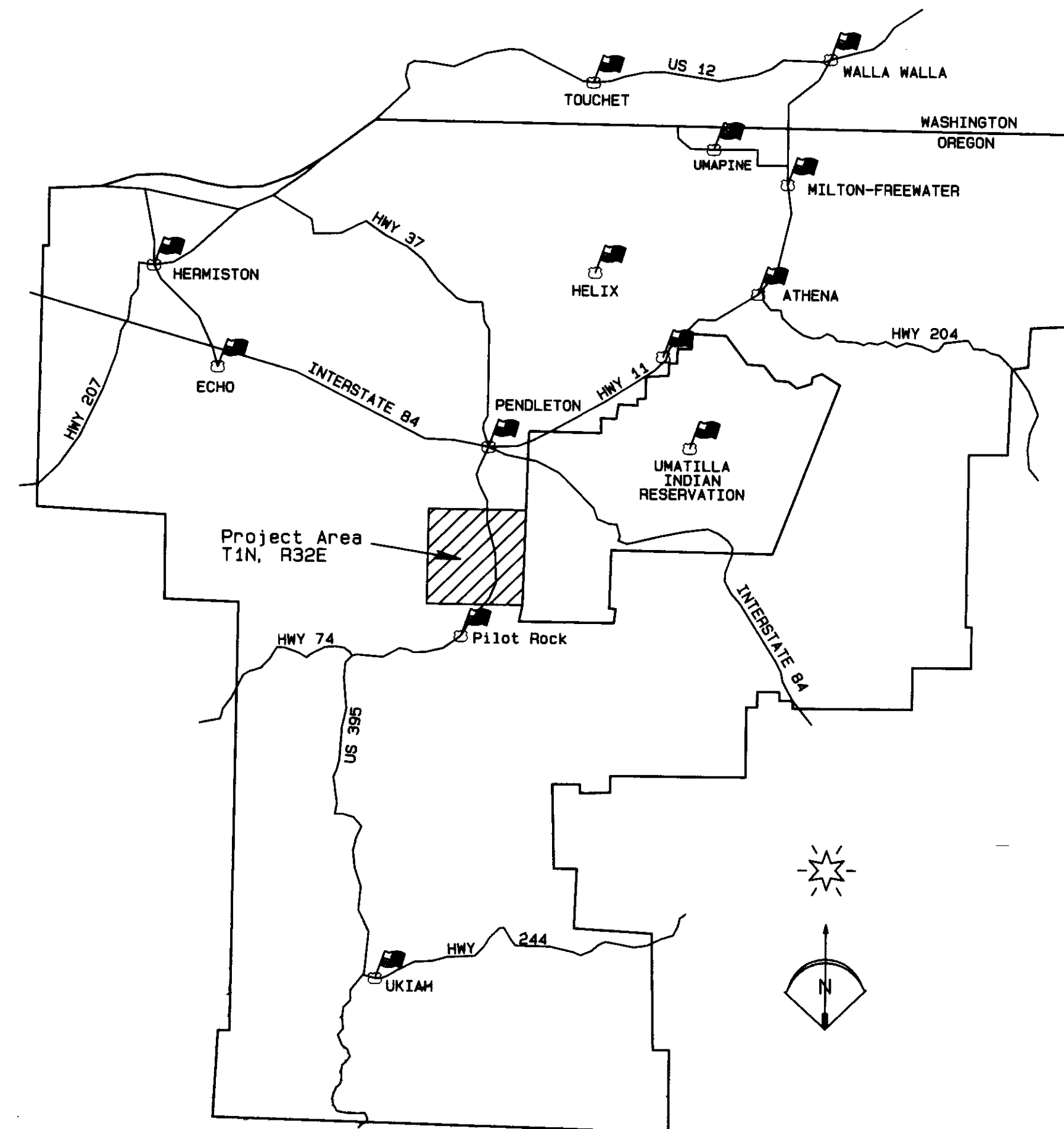


VICINITY MAP
UMATILLA COUNTY, OREGON



UMATILLA COUNTY
PUBLIC LAND CORNER REMONUMENTATION
TOWNSHIP 1 NORTH, RANGE 32 EAST
2008 / 2009

NARRATIVE OF SURVEY

This survey was performed at the request of the Umatilla County Surveyor, Mr. David Krumbain. The purpose of the survey was to locate all of the Public Land Survey System corners in this township, replace any substandard or missing monumentation, and provide NAD 83-1991 Oregon State Plane (second order) coordinate values for each identified corner.

Some of this work had already been performed along the Willamette Base Line and the north line of the township. The quarter corners along the Base Line were not a part of this contract. Those corners along the Base Line and the north township line that were a part of prior PLSS contracts were only tied to confirm the coordinate values and, when necessary, to re-establish and verify other corners in this project. See the corner certificates for information on those corners.

The survey of the original township extensions and subdivisions, which were completed by August of 1864, did not identify the location of the 1855 Treaty Boundary of the Umatilla Indian Reservation. The Reservation boundary was first located in 1871 by Zenas Moody. Mr. Moody held the northeast corner of the township but superceded the east township line, the north township line east of Section 4, and those section subdivisions lying east of the Reservation Boundary. In 1887, James Currin and James Noland superceded the Reservation Boundary location by Moody. The record indicates that they intended to hold prior monumentation for the section subdivisions and the east and north township lines. It appeared that they intended to hold the Chaplin corners as controlling, but I could not say this definitely because they did not describe all of the monuments they found, and at some of the corners they found entirely different monuments than either Chaplin or Moody said they set. They did report finding all of the corners on the east and north township lines.

To calculate corner positions along the east township line and the north lines of Sections 2 and 3, I used the broken boundary method. Currin and Noland reported finding all of the corner monuments along the north line of Sections 1, 2 and 3 and report that each section line had a different bearing. The east township line was again superceded by Lincoln Wilkes in 1917. This line is the Diminished Reservation Boundary. Mr. Wilkes held the prior monuments he found from the Currin and Noland survey as angle points in the line and he re-established all of the corners for that line, including those for Range 33 East, by running along the line in a single survey. That method of survey made all of the corners set by Mr. Wilkes, including the 1/16th corners, controlling corners for the line. I calculated all corner points on that line using the nearest controlling corners to the north and south of the computed corner. Corner positions calculated throughout the rest of the township were based on the appropriate GLO record determined by which side of the original Reservation Boundary they were on.

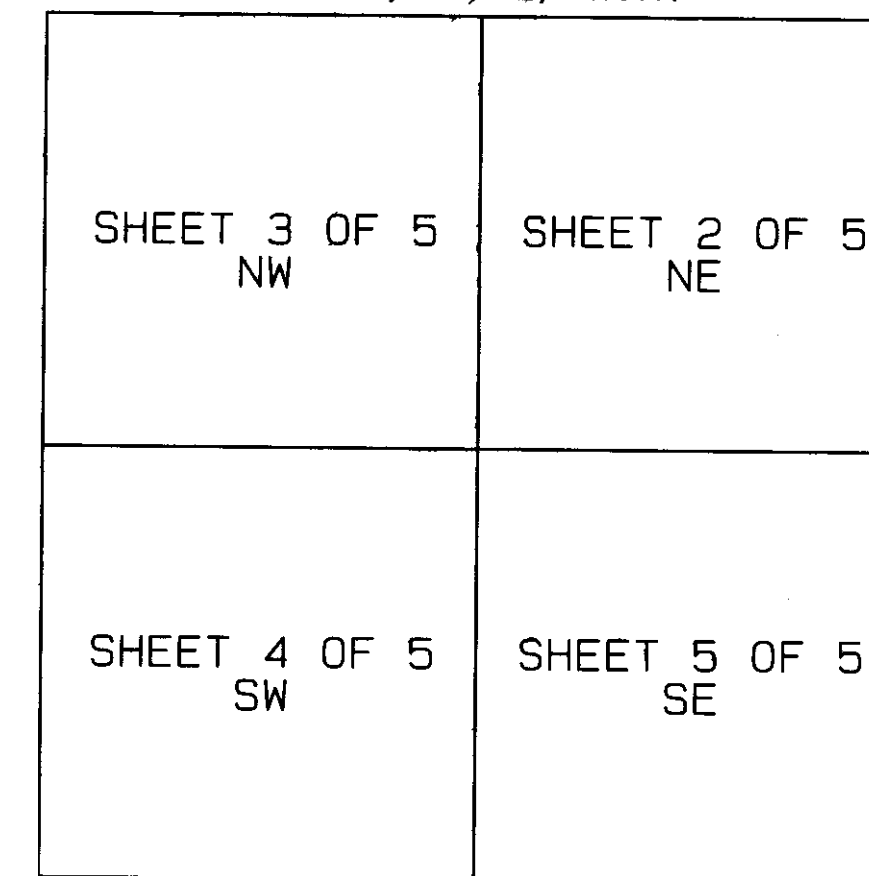
The original monumentation in this township lying west of the original Reservation Boundary was primarily post and pits. Most of the land in those sections is in farm fields and there has been extensive obliteration of the monumentation in the farmed areas and along the county roads. Throughout the township, all possessory lines, county road alignments, and evidence of field lines were dilligently compared to the record GLO dimensions and, where these were in good agreement with the record, they were held as the best available evidence of the original corner locations.

Factors controlling the location of individual corners have been explained in the corner notes on each sheet of this map. Since the map was drawn to display township quarters, some overlap was necessary. The notes for corners in the overlap area are repeated on each sheet on which the corner appears. Corners that were set strictly by proportionate measure have no explanatory notes.

MAP INDEX

Sheet 1 of 5 INDEX PAGE / VICINITY MAP
Sheet 2 of 5 NE QUARTER OF TOWNSHIP
Sheet 3 of 5 NW QUARTER OF TOWNSHIP
Sheet 4 of 5 SW QUARTER OF TOWNSHIP
Sheet 5 of 5 SE QUARTER OF TOWNSHIP

T1N, R32E, W.M.



RECORD SURVEYS

- R1 GLO CONTRACT #92 DATED SEPTEMBER 12, 1860 BY JOSIAH A. BURNETT
- R2 GLO CONTRACT #106 DATED AUGUST 16, 1864 BY DAVID P. THOMPSON
- R3 GLO CONTRACT #107 DATED SEPTEMBER 21, 1864 BY DANIEL CHAPLIN
- R4 GLO CONTRACT #164 DATED OCTOBER 4, 1871 BY ZENAS MOODY
- R5 GLO SPECIAL INSTRUCTIONS DATED MAY 4, 1887 BY CURRIN AND NOLAND
- R6 SPECIAL INSTRUCTIONS GROUP 29 DATED FEBRUARY 20, 1917 BY L. E. WILKES
- R7 SPECIAL INSTRUCTIONS GROUP 1944 DATED MARCH 16, 2000 BY BRYAN S. SEIBOLD

SURVEY #	SECTIONS INVOLVED
R8	BOOK 1 PAGE 290 14
R9	BOOK 1 PAGE 296 14
R10	BOOK 1 PAGE 422 9 & 10
R11	BOOK 1 PAGE 439 9
R12	BOOK 1 PAGE 471 6
R13	BOOK 1 PAGE 488 22-27 & 34
R14	BOOK 1 PAGE 525 19
R15	BOOK 1 PAGE 541 29
R16	BOOK 1 PAGE 564 19
R17	BOOK 2 PAGE 92 2
R18	BOOK 2 PAGE 95 7
R19	BOOK 2 PAGE 130 35
R20	BOOK 2 PAGE 239 3 & 4
R21	BOOK 2 PAGE 246 7 & 18
R22	BOOK 2 PAGE 294 14 & 23
R23	BOOK 2 PAGE 317 32 - 34
R24	D-1-Ax 27
R25	E-17-Ax 7 R33E
R26	F-11-B 10
R27	HAPPY TRAILS BOOK 12, PAGE 3 10
R28	H-2-B 1
R29	H-250-B 3 & 10
R30	H-251-B 34/35 T2N
R31	H-252-B 23
R32	H-253-B 11 & 14
R33	H-254-B 2 & 11
R34	H-255-B 1 & 14
R35	I-42-B 27
R36	IR-2-1041 ODOT 27
R37	R-79-A 1 & 2
R38	M-8-Ax 7 R33E
R39	P-95-B 10
R40	Q-52-Ax 25 R31E
R41	Q-54-Ax and Rancho Vista Addition Book 8, Page 34 10
R42	Q-56Ax 1 & 2
R43	Q-57-Ax 14
R44	Q-58-Ax 10
R45	85-33-B 15
R46	88-20-C 15
R47	90-20-B 14 & 25
R48	94-109-C 1 to 6
R49	96-80-B 35
R50	96-91-B 35
R51	96-167-B 15
R52	97-140-C 31 to 36
R53	97-145-C 34
R54	02-161-B 23
R55	03-232-B 10
R56	04-182-B 25
R57	05-150-B 3 & 10
R58	06-140-B 17
R59	06-528-C 15 & 22
R60	PP 2009-19 15
R61	ROAD 311 23 & 24
R62	ROAD 371 60AD
R63	ROAD 374 19
R64	ROAD 382 35
R65	ROAD 409 13
R66	ROAD 417 36
R67	ROAD 482 27
R68	ROAD 549 20
R69	ROAD 660 31
R70	ROAD 756 17 & 18
R71	ROAD 761 7
R72	ROAD 777 30

USGS NAD83/91 CONTROL POINTS

PID	STATION NAME	HORIZONTAL ORDER	NORTHING	EASTING
RB1403	ALKALI	FIRST	683,955.31171ft	8,564,340.26251ft
RB1488	BIG HILL RESET	A	710,814.25851ft	8,706,236.47301ft
RB1340	BIRCH	FIRST	638,707.94951ft	8,684,526.87991ft
RB1366	PENDLETON	B	733,999.51441ft	8,642,421.69291ft

COMBINED SCALE FACTOR

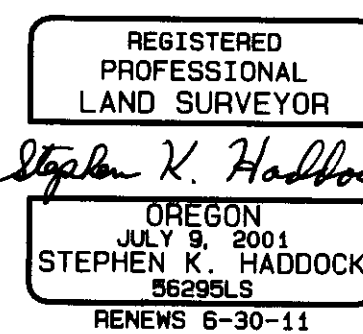
The combined scale factor used to convert the grid distances to true ground distances is 0.999844895. This value was obtained by averaging the scale factors of the four township corners and the NE corner of Section 21.

BASIS OF BEARINGS

Bearings for this project are based on rotating the Oregon State Plane Grid bearings 1°12'09" clockwise around the NE corner of Section 21 to true bearings.

RECEIVED BY

Umatilla County Surveyor
Date: 6-12
Rec'd By: KK
No.: 10-93-C



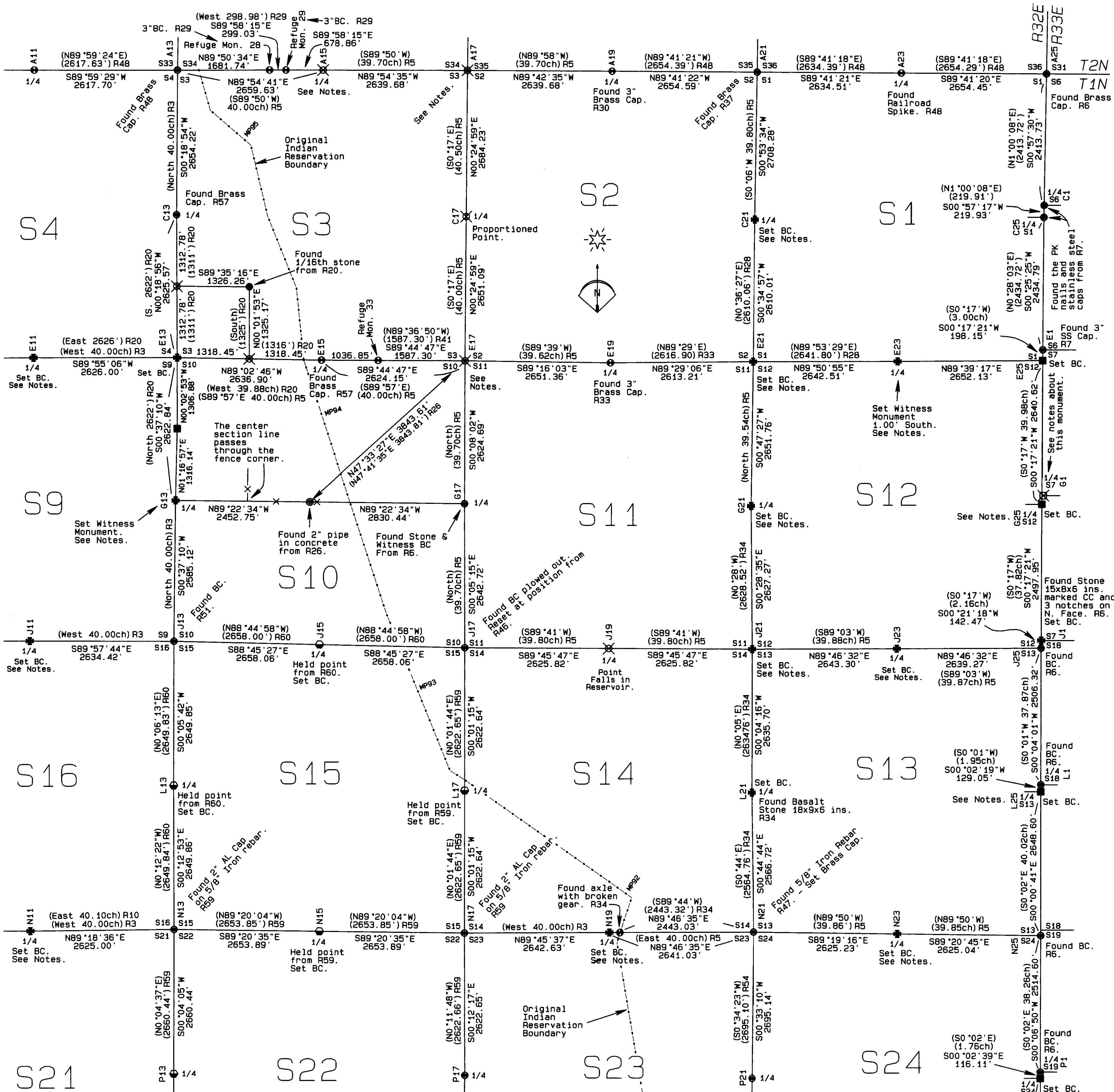
Map Date March 31, 2010

Sheet 1 of 5

SURVEY FOR UMATILLA COUNTY 3920 WESTGATE PENDLETON, OR 97801		PROJECT DATE: FALL 08 - SUMMER 09
LOCATION: T1N, R32E, W.M., UMATILLA COUNTY, OREGON	Project No. 08-29	SCALE: 1" = 2000'
WITNESS TREE SURVEYING Stephen K. Haddock, PLS P.O. Box 6 Pilot Rock, Oregon 97868 (541) 443-2922		

CORNER SEARCH AND REMONUMENTATION NOTES

CORNER NOTES ARE ARRANGED IN ORDER USING THE UMATILLA COUNTY ALPHA-NUMERIC CORNER DESIGNATION
CORNER NOTES ARE REPEATED ON ALL SHEETS WHERE THE CORNER APPEARS



Corner A15: This corner falls in McKay Reservoir. I calculated the corner point by proportioning the departure between corners A13 and A19 and holding the easterly projection of the line between Refuge Monuments No. 28 and 29 as per survey H-250-B.

Corner A17: This corner falls in McKay Reservoir. I calculated the corner point by single proportion using the broken boundary method and the record of Currin and Noland.

Corner C21: This corner point was established by survey H-9-B (Peterson Tracts), and, although he did not call it the 1/4 corner, it is evident that it was because the legal description of the land divided in that survey was by aliquot part. I projected the north line of Peterson Tract 21 west 20 feet from the N.W. corner of tract 21 to locate the quarter corner position.

Corner E11: This corner was remonumented by John Kimbrell in 1913. The area was recently dug up with a backhoe and concrete was poured to hold the fence corner post. There are fences running west and north and I have held this point as the corner because of its agreement with Kimbrell's record.

Corner E13: This corner was also re-established in 1913 by Kimbrell. I used his record to locate this corner because his record most closely fit the possessory lines in the area.

Corner E17: For this corner, survey F-11-B states, Brass Cap now under water. A sonar survey of this area shows that this corner point is in what is now the deepest part of McKay Reservoir. I could not confirm the existence of a brass cap as this point was under 45 feet of water when the water level was at its lowest point of the year. I calculated the position for this corner by projecting the north line of the Rancho Vista Addition to the east the record distance as called on that plat. This point agrees very well with the tie to the initial point of the "Garden of Gethsemane" as shown on survey F-11-B.

Corner E21: This corner point was also established by survey H-9-B (Peterson Tracts). To locate this corner I projected the south line of Peterson Tract 1, 20 feet west from the S.W. corner of Tract 1 to establish the section corner position.

Corner E23: This corner point was monumented with a 1" iron pipe in survey H-9-B. The pipe is still there but ties to other monuments from that survey indicate that it has been moved. The true corner point is now occupied by a railroad tie fence corner post. I set a witness monument 1.00 foot south of the true corner point.

Corner G13: Survey 05-150-B reports finding a broken stone with two parallel "chisel marks" about 4 inches long. This point falls in the bottom of the active channel of Birch Creek. Mr. Gary Reinhart and Mr. Homer Peterson both told me that the Army Corps of Engineers removed all of the vegetation on this creek from the Umatilla River to Pilot Rock and channelized the creek in the early 1960's, that winter, a severe storm caused flooding which moved the creek to its present location today. Given that the stone from survey 05-150-B has irregular marks, the location of this stone is in the active channel of the creek, and its location disagrees with other monuments along the east-west centerline of Section 10, I cannot accept it as the true corner. I have, therefore, calculated the point for this corner by projecting the east-west centerline of Section 10 to an intersect with the west line of Section 10. This point also falls in the active channel of the creek and I did not monument the point but set a witness monument on the center section line, 135.00 feet east of the corner point.

Corner G21: The Refuge survey set a 3" brass capped witness monument 30' west of this corner. At the corner point I found a basalt stone 11"x8"x6" with a visible "4". There was also a railroad spike wrapped in a 2" coil of bailing wire on the east side of the stone and a 3/8"x8" nail set over the top of the railroad spike. I set the brass cap at the position of the stone.

Corner G25: There is a fence running west near this corner that is of fairly new construction and does not have the normal berm associated with long time fences in this area. Lincoln Wilkes also rejected a fence near this point. I have not held this fence as evidence of the corner.

Corner 1N33 - G1: This Wilkes monument protrudes 2' out of the ground and is immediately adjacent to a power pole guy anchor. It appeared to have been disturbed. Ties to monuments from survey M-8-Ax indicate that it is not in the position that it was in 1976. I did not use this monument when proportioning back the east quarter corner of section 12.

Corner J11: For this corner I proportioned the latitude and held the east-west fence for departure. At the corner point I found an unmarked basalt stone 16"x10"x8". set as a proper corner monument should have been. I assume that Kimbrell set this stone in 1913 although he did not say so.

Corner J21: At this point I found a basalt stone 13"x8"x5" with a 1"x53" hexagonal drill steel drive along the north side of the stone. I also found the Refuge Survey witness monument 30' west of the corner. I set the brass cap at the position of the stone.

Corner J23: The road notes from 1892 by John Arnold for Road 409 call for a stone in the center of the east-west county road. This point now falls in a horse pasture but long time resident, Cecil Holmes, states that the part of his driveway on the north side of his house approximately 100 feet east of the corner point was the old county road when he was a boy. I held the intersection of the section line and a north-south fence to determine the corner point.

Corner L25: Lincoln Wilkes found the original stone at this corner and set a witness monument 30 feet to the west. There is currently a fence corner near this point with fences running North and West. The fence is fairly new and does not have the normal berm associated with long term fence lines in this area. There is also a bent 3/4" water pipe approximately 23 feet south of the fence corner. Mr. Wilkes also set a witness monument for the 1/4 corner to Section 18, T1N, R32E 1.95 chains to the north. The brass cap for that corner had been moved from its "witness" position to the actual corner point under the fence. Due to the fact that that monument had been moved and that the fence corner and 3/4" iron pipe represent divergent positions for this corner, I have rejected both the fence corner and 3/4" pipe as evidence of the true corner point.

Corner N19: The GLO record by Currin & Noland calls for this corner to be 3.00 chains west of the Umatilla Reservation Boundary. The McKay Creek National Wildlife Refuge survey, H-255-B did not say how they established the section line or the position of the "axle" (their point No. 91), but reviewing the legal descriptions leads me to believe that the axle was intended to remonument the closing corner on the original Reservation line. I calculated the corner position by projecting the section line from the southeast corner of Section 14 through the axle a distance of 3 chains to the west.

Corner N23: I found a 5/8" iron rebar at this corner position. Long time resident, Dan Shaw, told me that he had some survey work done by Mr. Wayne Harris in the 1970's and that the monument had been set at that time. Mr. Shaw led me to believe that the 5/8" rebar found at corner N21 in survey 90-20-B was also set by Mr. Harris. I was not able to find a recorded survey by Mr. Harris.

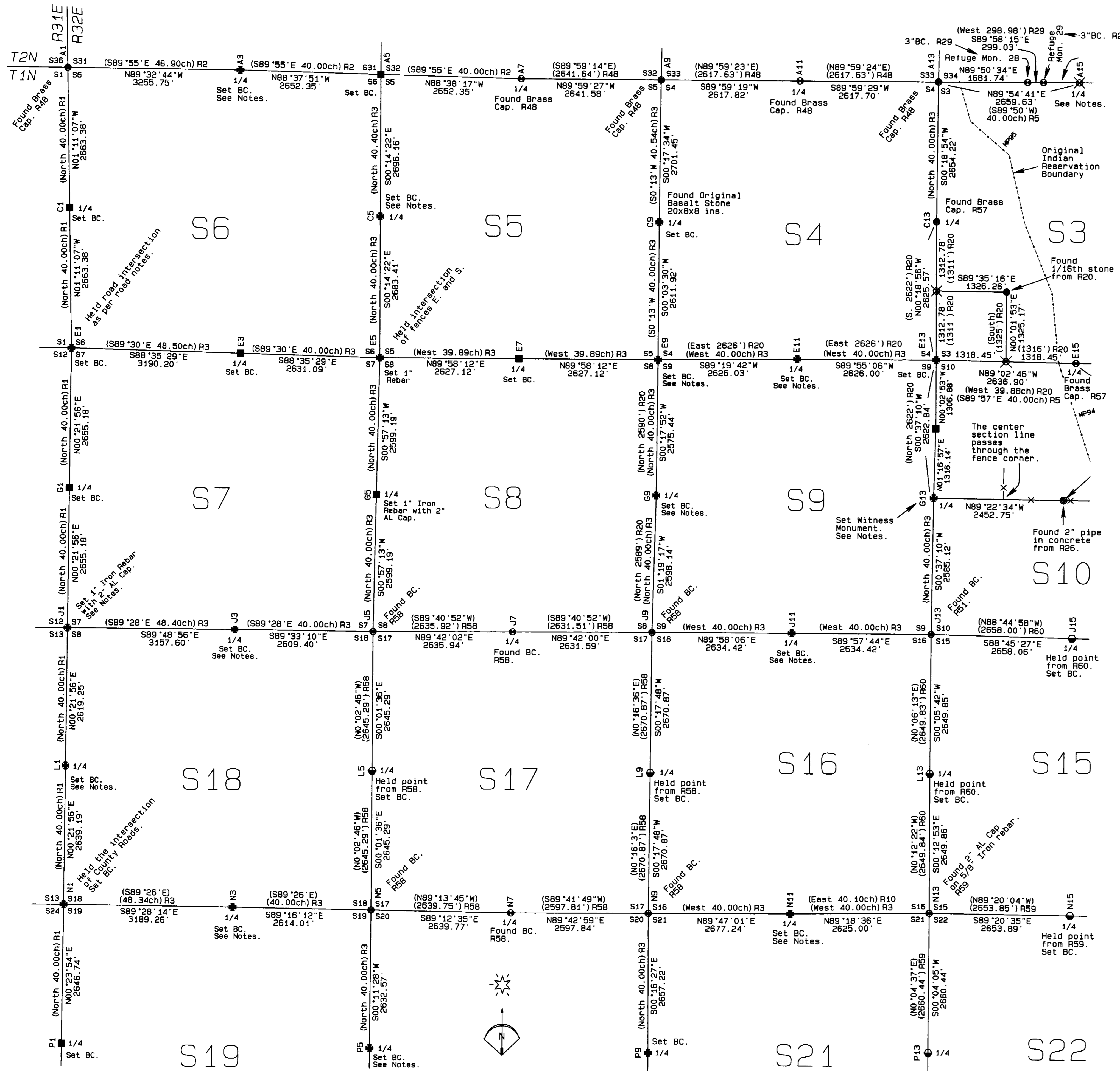
LEGEND

- FOUND BRASS CAP, ALUMINUM OR IRON MONUMENT OF RECORD. SEE THE CORNER NOTES.
- FOUND KIMBRELL'S STONE SET AS A 5/8" x 24" IRON REBAR W/ A 1 1/8" ORANGE PLASTIC CAP STAMPED WTS AND 56295LS
- FOUND EVIDENCE OF GLO POSITION. SET BRASS CAP OR 1"x24" IRON REBAR WITH 2" ALUMINUM CAP.
- SET A BRASS CAP OR 1" IRON REBAR WITH AL CAP AT THE PROPORTIONED POINT. SEE THE CORNER CERTIFICATES.
- SET A BRASS CAP OR 1" IRON REBAR WITH AL CAP AT A POINT FROM A PRIOR SURVEY WITH NO PRIOR MONUMENT.
- ⊗ COMPUTED CORNER POINT NO MONUMENT SET

REGISTERED PROFESSIONAL LAND SURVEYOR
Stephen K. Haddock
OREGON
JULY 9, 2001
STEPHEN K. HADDOCK
56295LS
RENEWS 6-30-11

RECEIVED BY
Umatilla County Surveyor
Date: 6-18
Rec'd By: SR
No.: 10-92-C

SURVEY FOR UMATILLA COUNTY 3920 WESTGATE PENDLETON, OR 97801		PROJECT DATE: FALL 08 - SUMMER 09	
		Project No. 08-29	SCALE: 1" = 1000'
LOCATION: T1N, R32E, W.M., UMATILLA COUNTY, OREGON		WITNESS TREE SURVEYING Stephen K. Haddock, PLS P.O. Box 6 Pilot Rock, Oregon 97868 (541) 443-2922	



CORNER SEARCH AND REMONUMENTATION NOTES

CORNER NOTES ARE ARRANGED IN ORDER USING THE UMATILLA COUNTY ALPHA-NUMERIC CORNER DESIGNATION
 CORNER NOTES ARE REPEATED ON ALL SHEETS WHERE THE CORNER APPEARS

- Corner A3: I found and held the remains of a decayed post at the corner of fences running west, north and south.
- Corner A15: This corner falls in McKay Reservoir. I calculated the corner point by proportioning the departure between corners A13 and A19 and holding the easterly projection of the line between the Refuge Monuments No. 28 and 29 as per survey H-250-B.
- Corner C5: To locate this corner I first established the NE and SE corners of Section 6 and then held the intersection of the east section line with an east-west fence field line.
- Corner E9: I held the intersection of the centerline of George Canyon Road with a fence line running to the East. This is in agreement with the survey by L.E. Macomber in 1900 and by J.W. Kimbrell in 1913.
- Corner E11: This corner was remonumented by John Kimbrell in 1913. The area was recently dug up with a backhoe and concrete was poured to hold the fence corner post. There are fences running west and north, and I have held this point as the corner because of its agreement with Kimbrell's record.
- Corner E13: This corner was also re-established in 1913 by Kimbrell. I used his record to locate this corner because his record most closely fit the possessory lines in the area.
- Corner G9: At this corner I held the intersection of the centerline of George Canyon Road and a fence line running east. This is in agreement with the L.E. Macomber survey done in 1900 and with the Kimbrell survey from 1913.
- Corner G13: Survey 05-150-B reports finding a broken stone with two parallel "chisel marks" about 4 inches long. This point falls in the bottom of the active channel of Birch Creek. Mr. Gary Rinehart and Mr. Homer Peterson both told me that the Army Corps of Engineers removed all of the vegetation on this creek from the early 1960's. Pilot Rock and channelized the creek in the early 1960's. That winter, a severe storm caused flooding which moved the creek to its present location today. Given that the stone from survey 05-150-B has irregular marks, the location of this stone is in the active channel of the creek, and its location disagrees with other monuments along the east-west centerline of Section 10, I cannot accept it as the true corner. I have, therefore, calculated the point for this corner by projecting the east-west centerline of Section 10 to an intersect with the west line of Section 10. This point also falls in the active channel of the creek. I did not monument the point but set a witness monument on the center section line, 135.00 feet east of the corner point.
- Corner J1: The road notes for Reinhart Road call for running "north" but only call for the northwest corner of Section 7. At this corner point there is evidence that the fences have been farther west than the current west fence of the roadway. To re-establish this corner I held the township line determined by corners to the north and south and fence lines running east and west.
- Corner J3: At this corner I proportioned the departure and held the east-west fence line for latitude. The fence had recently been removed in this area but its remains to the east and west were still in place.
- Corner J11: For this corner I proportioned the latitude and held the east-west fence for departure. At the corner point I found an unmarked basalt stone 16"x10"x8". set as a proper corner monument should have been. I assume that Kimbrell set this stone in 1913 although he did not say so.
- Corner L1: I held the intersection of the township line and a fence line running west.
- Corner N3: This corner point has been dug up for the installation of irrigation mains. I held the intersection of the east - west road centerline, a plow berm running south, and a fence to the north.
- Corner N11: This corner point was determined at the intersection of a fence running south and a plow berm running to the east. The resulting departure for the east and west halves of the north line of section 21 are very close to the dimensions seen on the south line of Section 21. This location also results in good agreement with the fences following the subdivisional lines of this section.
- Corner P5: This corner point falls on a very straight plow berm running east and west. There are remains of an old fence to the east and west which indicate that there used to be a fence here. Mr. J.G. Simpson told me that the fence was taken down 20 years ago and that the neighbors and he were very careful to maintain the plow line. To establish the corner point I held the intersection of the north - south section line with the east - west plow berm. At the corner I found the remains of a charred post, but I could not prove that it was not an old fence post.

REGISTERED
 PROFESSIONAL
 LAND SURVEYOR
Stephen K. Haddock
 OREGON
 JULY 9, 2011
 STEPHEN K. HADDOCK
 56299LS
 RENEWS 6-30-11

- LEGEND**
- FOUND BRASS CAP, ALUMINUM OR IRON MONUMENT OF RECORD. SEE THE CORNER NOTES.
 - FOUND KIMBRELL'S STONE SET A 5/8" x 24" IRON REBAR W/ A 1/8" ORANGE PLASTIC CAP STAMPED WTS AND 56299LS
 - FOUND EVIDENCE OF GLO POSITION. SET BRASS CAP OR 1"x24" IRON REBAR WITH 2" ALUMINUM CAP.
 - SET A BRASS CAP OR 1" IRON REBAR WITH AL CAP AT THE PROPORTIONED POINT. SEE THE CORNER CERTIFICATES.
 - SET A BRASS CAP OR 1" IRON REBAR WITH AL CAP AT A POINT FROM A PRIOR SURVEY WITH NO PRIOR MONUMENT.
 - ⊗ COMPUTED CORNER POINT NO MONUMENT SET

RECEIVED BY
 Umatilla County Surveyor
 Date: *6-20*
 Rec'd by: *JK*
 No.: *10-93-c*

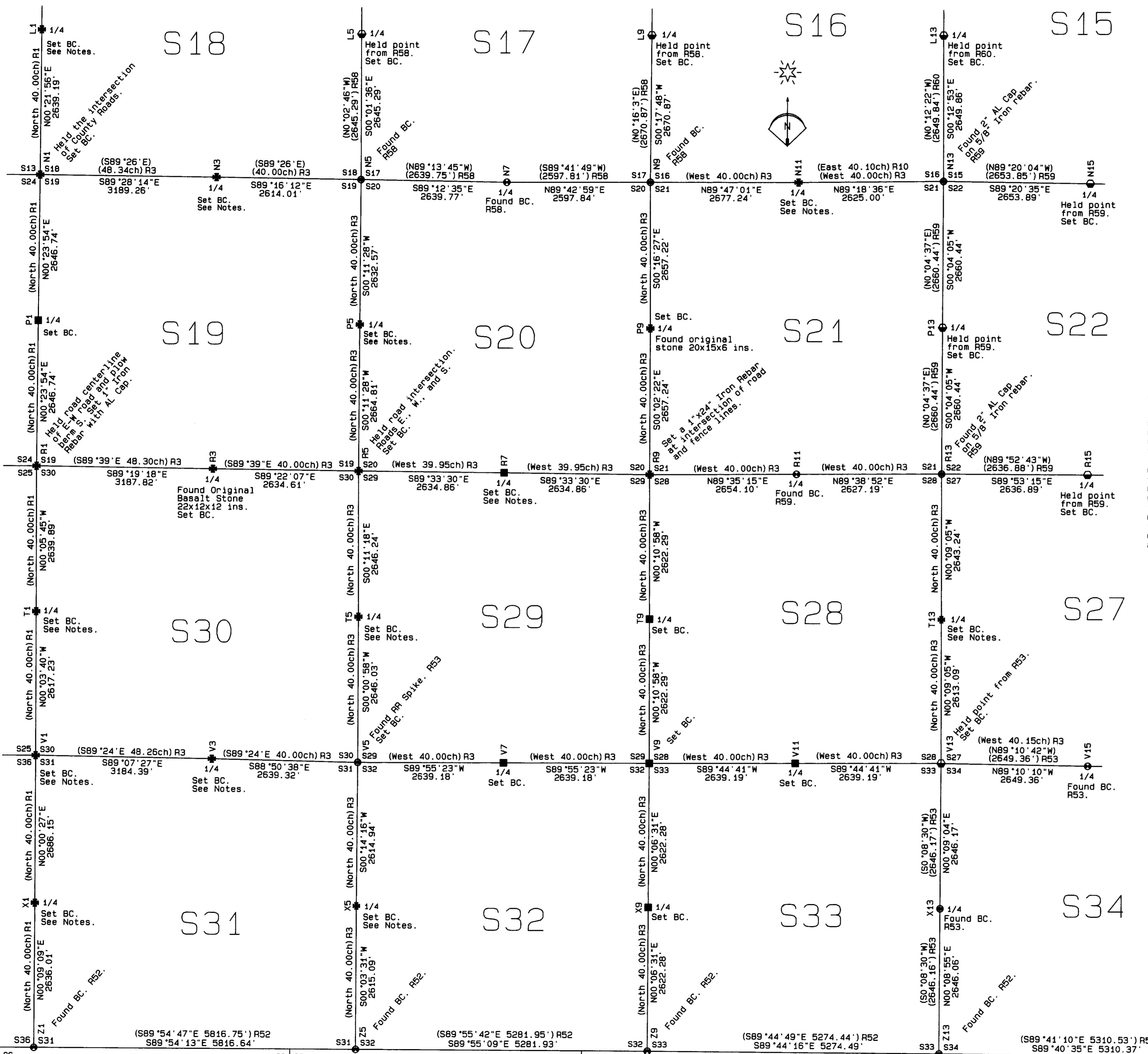
SURVEY FOR
 UMATILLA COUNTY
 3920 WESTGATE
 PENDLETON, OR 97801

LOCATION: T1N, R32E, W.M.,
 UMATILLA COUNTY, OREGON

PROJECT DATE: FALL 08 - SUMMER 09
 Project No. 08-29 SCALE: 1" = 1000'
WITNESS TREE SURVEYING
 Stephen K. Haddock, PLS
 P.O. Box G
 Pilot Rock, Oregon 97868
 (541) 443-2922

CORNER SEARCH AND REMONUMENTATION NOTES

CORNER NOTES ARE ARRANGED IN ORDER USING THE UMATILLA COUNTY ALPHA-NUMERIC CORNER DESIGNATION
 CORNER NOTES ARE REPEATED ON ALL SHEETS WHERE THE CORNER APPEARS



Corner L1: I held the intersection of the township line and a fence line running west.

Corner N3: This corner point has been dug up for the installation of irrigation mains. I held the intersection of the east - west road centerline, a plow berm running south and a fence to the north.

Corner N11: This corner point was determined at the intersection of a fence running south and a plow berm running to the east. The resulting departure for the east and west halves of the north line of section 21 are very close to the dimensions seen on the south line of Section 21. This location also results in good agreement with the fences following the subdivisional lines of this section.

Corner P5: This corner point falls on a very straight plow berm running east and west. There are remains of an old fence to the east and west which indicate that there used to be a fence here. Mr. J.G. Simpson told me that the fence was taken down 20 years ago and that the neighbors and he were very careful to maintain the plow line. To establish the corner point I held the intersection of the north - south section line with the east - west plow berm. At the corner I found the remains of a charred post, but I could not prove that it was not an old fence post.

Corner R7: This corner falls at a road intersection with roads running east - west and north. The roads east and west were supposed to be along the section line but they do not line up. There are indications of multiple fence locations on the south side of the road. Mr. J.G. Simpson told me that this intersection has been modified several times and that the multiple fences are due to the fact that the south side of the intersection used to be a pond in rainstorms. The sediment has completely filled that low place so that now the water just runs over the road. Given the unreliability of the evidence, I have proportioned this corner.

Corner T1: County Road No. 777 surveyed north along the township line in 1916. This was one year after survey G-52-Ax in which Geary Kimbrell indicates that there was a stone monument at this corner point. I did not find the stone but have held the centerline of the old road track and a fence to the west. I located several fences in Section 25, and they all appear to be based on the Kimbrell survey, and I have held it as the best available evidence of this corner.

Corner T5: For this corner I proportioned the latitude and held the existing County Road fence on the east right of way line to determine the departure.

Corner T13: The survey in the Record of Private Surveys Book 1, Page 488, shows that John Kimbrell surveyed the east - west centerline of Section 27 in 1903. There have been other surveys, including some unrecorded work by Wayne Harris but they did not appear to alter the location established by Kimbrell. I believe that the location of the existing east - west fence line is based on the Kimbrell survey. Therefore, I held it as the best evidence of the true corner locations. I projected this line to an intersection with the west section line to locate the west quarter corner point.

Corner V1: The road notes for County Roads 633, 660 and 777 all call for this corner on their centerline. However, John Kimbrell thought that Road 633 was 60 feet wide while Willard Bradley thought it was only 40. I have held the centerline of the visible road structures as being the best evidence of the corner location.

Corner V3: To locate this corner I held the centerline of the road for latitude and proportioned the departure.

Corner X1: To re-establish this corner position I held the centerline of the north - south road as per the notes for County Road No. 633 for departure and a fence line running to the west for latitude.

Corner X5: In the survey recorded in Book 2, Page 317 of the Record of Private Surveys, County Surveyor Aubrey Perry ran the west lines of Sections 29 & 32, 28 & 33, and 27 & 34 respectively. The purpose of that survey was to establish the east - west centerlines of Sections 32 and 33 in preparation for fencing. The greatest deviation I found between the measured distances and Mr. Perry's record is only 2.3 feet per half mile. The actual fence running east-west through these sections varies from 23 feet to 73 feet south of Mr. Perry's locations. I have, therefore, not held this fence as evidence of the original quarter corner locations in these sections.

REGISTERED PROFESSIONAL LAND SURVEYOR
 Stephen K. Haddock
 OREGON
 JULY 3, 2004
 STEPHEN K. HADDOCK
 56295LS
 RENEWS 6-30-11

- LEGEND
- FOUND BRASS CAP, ALUMINUM OR IRON MONUMENT OF RECORD. SEE THE CORNER NOTES.
 - FOUND KIMBRELL'S STONE SET A 5/8" x 24" IRON REBAR W/ A 1/8" ORANGE PLASTIC CAP STAMPED WTS AND 56295LS
 - FOUND EVIDENCE OF GLO POSITION. SET BRASS CAP OR 1"x24" IRON REBAR WITH 2" ALUMINUM CAP.
 - SET A BRASS CAP OR 1" IRON REBAR WITH AL CAP AT THE PROPORTIONED POINT. SEE THE CORNER CERTIFICATES.
 - SET A BRASS CAP OR 1" IRON REBAR WITH AL CAP AT A POINT FROM A PRIOR SURVEY WITH NO PRIOR MONUMENT.
 - ⊗ COMPUTED CORNER POINT NO MONUMENT SET

T1N
 T1S
 R31E
 R32E

RECEIVED BY
 Umatilla County Surveyor
 Date: 6-10
 Rec'd By: KE
 No.: 10-93-C

SURVEY FOR UMATILLA COUNTY 3920 WESTGATE PENDLETON, OR 97801		PROJECT DATE: FALL 08 - SUMMER 09	
LOCATION: T1N, R32E, W.M., UMATILLA COUNTY, OREGON		Project No. 08-29	SCALE: 1" = 1000'
WITNESS TREE SURVEYING Stephen K. Haddock, PLS P.O. Box 6 Pilot Rock, Oregon 97868 (541) 443-2922			

CORNER SEARCH AND REMONUMENTATION NOTES

CORNER NOTES ARE ARRANGED IN ORDER USING THE UMATILLA COUNTY ALPHA-NUMERIC CORNER DESIGNATION
 CORNER NOTES ARE REPEATED ON ALL SHEETS WHERE THE CORNER APPEARS

Corner N11: This corner point was determined at the intersection of a fence running south and a plow berm running to the east. The resulting departure for the east - west halves of the north line of section 21 are very close to the dimensions seen on the south line of Section 21. This location also results in good agreement with the fences following the subdivisional lines of this section.

Corner N19: The GLO record by Currin & Noland calls for this corner to be 3.00 chains west of the Umatilla Reservation Boundary. The McKay Creek National Wildlife Refuge survey, H-255-B did not say how they established the section line or the position of the "axle" (their point No. 91), but reviewing the legal descriptions leads me to believe that the axle was intended to remonument the closing corner on the original Reservation Line. I calculated the corner position by projecting the section line from the southeast corner of Section 14 through the axle a distance of 3 chains to the west.

Corner N23: I found a 5/8" iron rebar at this corner position. Long time resident, Dan Shaw, told me that he had some survey work done by Mr. Wayne Harris in the 1970's and that the monument had been set at that time. Mr. Shaw led me to believe that the 5/8" rebar found at corner N21 in survey 90-20-B was also set by Mr. Harris. I was not able to find a recorded survey by Mr. Harris.

Corner R23: At this corner the fence had been buried by farming and drifting soil to the top wire of the fence. The fence runs north - south through the center of Sections 24 and 25. Daniel Chaplin and Zenas Moody both report setting this corner at midpoint on the section line. The record by Currin & Noland reports finding the corner out of position by 1 chain to the east. It may be that Currin & Noland had a measurement error, or that the possessory lines were based on the Moody monument. In either case, the existing fence is near the midpoint of the line and I have held the fence as the best available evidence of the departure for this corner.

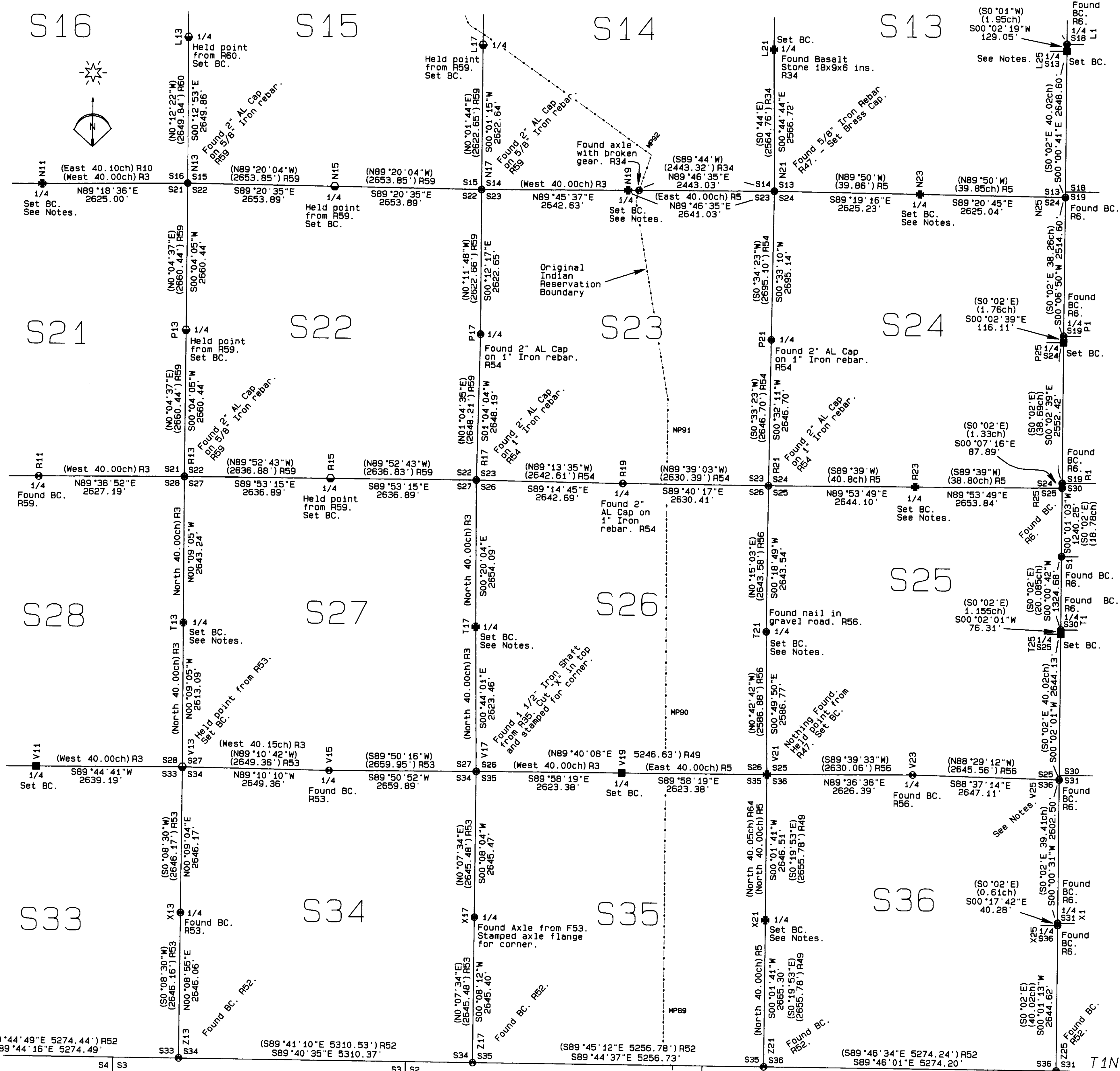
Corner T13: The survey in the Record of Private Surveys Book 1, Page 488, shows that John Kimbrell surveyed the east - west centerline of Section 27 in 1903. There have been other surveys, including some unrecorded work by Wayne Harris but they did not appear to alter the location established by Kimbrell. I believe that the location of the existing east - west fence line is based on the Kimbrell survey. Therefore, I held it as the best evidence of the true corner locations. I projected this line to an intersection with the west section line to locate the west quarter corner point.

Corner T17: For this corner, I also held the east - west centerline through Section 27 as described for corner T13 above. I intersected the easterly projection of this line with the centerline of the old highway as shown on the old highway maps.

Corner T21: County Survey 04-182-B reports finding a nail at this corner point and setting a brass cap. I found the nail as reported on that survey but no brass cap or references had been set.

Corner T25: Survey 04-182-B set a brass cap at the corner of fences running south and west. That brass cap is unmarked but solidly set and lies 4.62 feet southerly of the 1919 GLO brass cap by Wilkes. I held the Wilkes monument for this survey.

Corner X21: This corner was used as the initial point of the survey of County Road No. 382. That survey reports that both this quarter corner and the section corner to the north were in place and reported the distance between them at 40.05 chains. At present, there is an east - west fence along the center of section line through Section 36 and the distance from that fence to the section corner to the north is within 3 feet of the record from the road survey. I have held the intersection of the section line and the east - west fence as the best evidence of the original corner location.



REGISTERED PROFESSIONAL LAND SURVEYOR
 Stephen K. Haddock
 JULY 9, 2001
 STEPHEN K. HADDOCK
 56295LS
 RENEWS 6-30-11

- LEGEND
- FOUND BRASS CAP, ALUMINUM OR IRON MONUMENT OF RECORD. SEE THE CORNER NOTES.
 - FOUND KIMBRELL'S STONE SET A 5/8" x 24" IRON REBAR W/ A 1/8" ORANGE PLASTIC CAP STAMPED WTS AND 56295LS
 - FOUND EVIDENCE OF GLO POSITION. SET BRASS CAP OR 1"x24" IRON REBAR WITH 2" ALUMINUM CAP.
 - SET A BRASS CAP OR 1" IRON REBAR WITH AL CAP AT THE PROPORTIONED POINT. SEE THE CORNER CERTIFICATES.
 - SET A BRASS CAP OR 1" IRON REBAR WITH AL CAP AT A POINT FROM A PRIOR SURVEY WITH NO PRIOR MONUMENT.
 - ⊗ COMPUTED CORNER POINT NO MONUMENT SET

RECEIVED BY
 Umatilla County Surveyor
 Date: 6-10
 Rec'd By: K.R.
 No.: 10-193-c

SURVEY FOR
 UMATILLA COUNTY
 3920 WESTGATE
 PENDLETON, OR 97801
 LOCATION: T1N, R32E, W.M.,
 UMATILLA COUNTY, OREGON

PROJECT DATE: FALL 08 - SUMMER 09
 Project No. 08-29 SCALE: 1" = 1000'
WITNESS TREE SURVEYING
 Stephen K. Haddock, PLS
 P.O. Box 6
 Pilot Rock, Oregon 97868
 (541) 443-2922