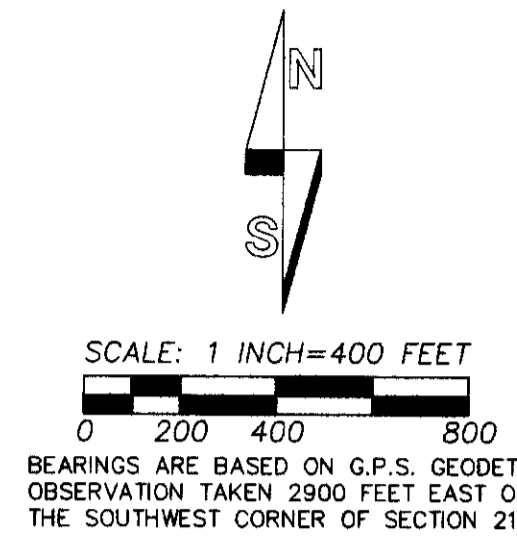


RECORD OF SURVEY

SECTION CORNER, ACCEPTED ANCIENT FENCE CORNER WITH FENCE LINES EAST AND SOUTH AND REMONUMENTED. SEE CORNER RECORD FILED SEPARATELY. THIS FENCE CORNER WAS ALSO ACCEPTED IN 1956 SURVEY NO. 03-154-A, BY WAYNE HARRIS.



LINE NO.	BEARING	DISTANCE
L1	S 82°53'04" E	301.82'
L2	N 69°17'59" E	19.46'
L3	N 69°17'59" E	48.94'
L4	N 55°08'44" E	67.81'
L5	N 35°48'31" E	56.87'
L6	N 25°13'13" E	89.47'
L7	N 18°44'49" E	189.28'
L8	S 73°16'52" E	55.87'
L9	N 61°33'56" E	158.61'
L10	N 32°41'11" E	44.70'
L11	N 38°34'39" E	46.19'
L12	N 30°17'36" W	134.18'
L13	N 21°19'26" E	243.40'
L14	N 43°41'01" W	55.15'
L15	N 43°41'01" W	121.35'
L16	N 32°22'08" W	92.52'
L17	N 38°08'31" W	183.62'
L18	N 47°26'08" W	65.67'
L19	N 56°12'41" W	42.98'
L20	N 63°51'16" W	183.25'
L21	N 84°21'21" W	301.18'
L22	N 83°37'22" W	97.38'
L23	S 75°02'00" W	192.33'
L24	S 84°53'51" W	185.15'
L25	N 12°47'43" E	18.45'
L26	N 12°09'37" E	36.13'
L27	N 86°04'54" E	100.09'
L28	N 63°56'29" E	93.17'
L29	N 29°01'12" E	61.41'
L30	N 13°06'51" E	64.54'
L31	N 22°04'29" W	333.92'
L32	NORTHEASTERLY	22.37'
L33	S 78°52' E	303.3'
L34	S 84°34' E	345' M/L

AREA SUMMARY

	EXISTING*	ADJUSTED
TAX LOT 6900	213.40 ACRES M/L	205.20 ACRES M/L
TAX LOT 6901	318.62 ACRES M/L	326.82 ACRES M/L

*EXISTING TAX MAP AREAS ARE TAKEN FROM TAX MAP 3N 33.

NARRATIVE

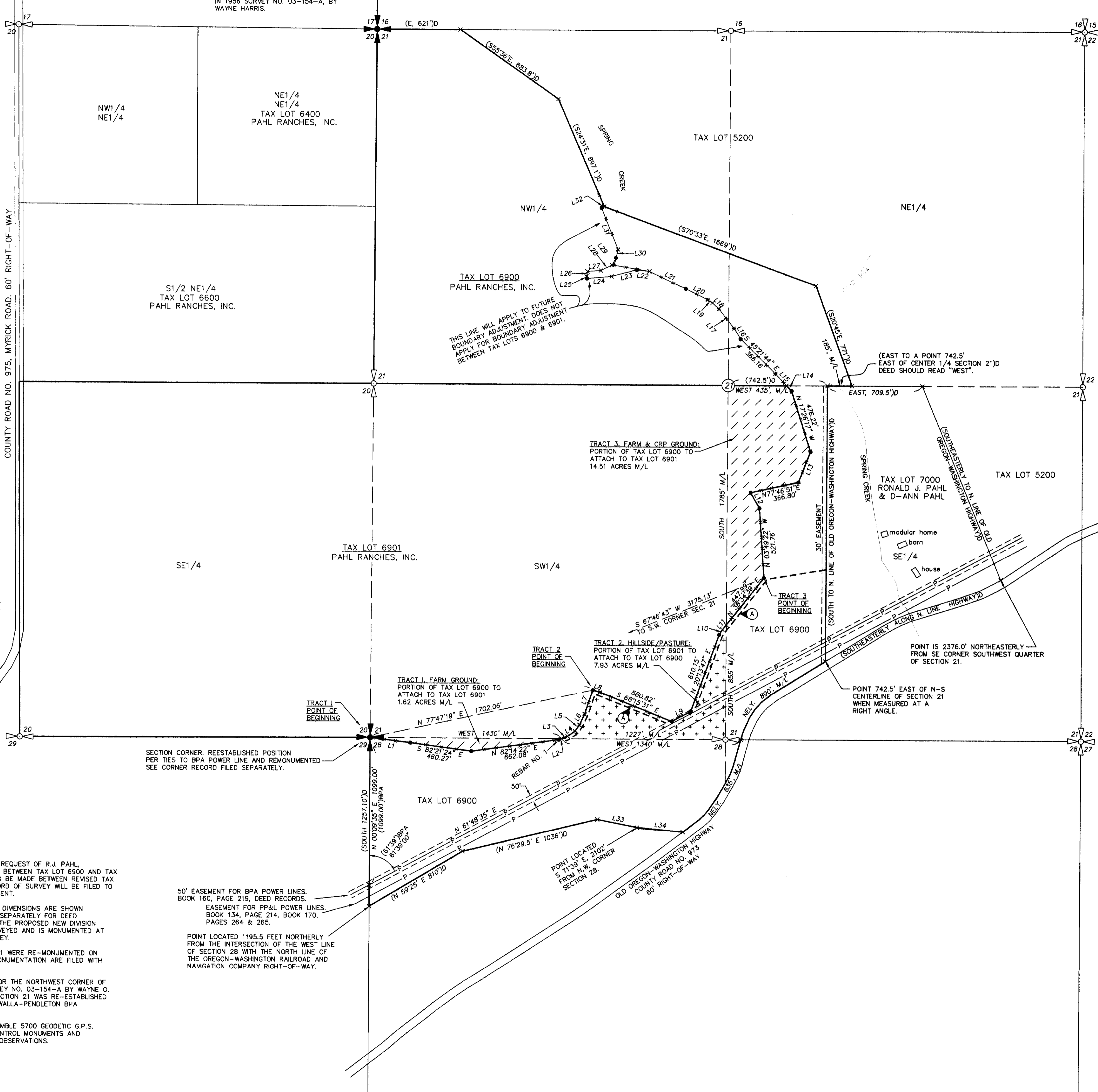
THIS BOUNDARY ADJUSTMENT SURVEY WAS MADE AT THE REQUEST OF R.J. PAHL, REPRESENTING PAHL RANCHES, INC., TO ADJUST ACREAGE BETWEEN TAX LOT 6900 AND TAX LOT 6901, TAX MAP 3N 33. A SECOND ADJUSTMENT IS TO BE MADE BETWEEN REVISED TAX LOT 6900 AND TAX LOT 700, MAP 3N 33. ANOTHER RECORD OF SURVEY WILL BE FILED TO DOCUMENT DETAILS OF THE SECOND BOUNDARY ADJUSTMENT.

RECORD DEED DIMENSIONS AND CERTAIN "MORE OR LESS" DIMENSIONS ARE SHOWN FOR LINES NOT SURVEYED. DESCRIPTIONS ARE PREPARED SEPARATELY FOR DEED CONVEYANCES TO EFFECT THE BOUNDARY ADJUSTMENTS. THE PROPOSED NEW DIVISION LINES BETWEEN TAX LOTS AND 6900 AND 6901 WAS SURVEYED AND IS MONUMENTED AT RANDOM INTERVALS AS SHOWN ON THIS RECORD OF SURVEY.

THE NORTHWEST AND SOUTHWEST CORNERS OF SECTION 21 WERE RE-MONUMENTED ON THIS SURVEY AND CORNER RECORDS DOCUMENTING RE-MONUMENTATION ARE FILED WITH THIS RECORD OF SURVEY.

THE POSITION OF AN ANCIENT FENCE CORNER WAS HELD FOR THE NORTHWEST CORNER OF SECTION 21, AS NOTED AND AS ACCEPTED ON 1956 SURVEY NO. 03-154-A BY WAYNE O. HARRIS. THE POSITION OF THE SOUTHWEST CORNER OF SECTION 21 WAS RE-ESTABLISHED FROM TIES SHOWN ON THE 1940 SURVEY OF THE WALLA WALLA-PENDLETON BPA TRANSMISSION LINE.

THIS SURVEY WAS MADE BY A 2 PERSON CREW USING TRIMBLE 5700 GEODETIC G.P.S. RECEIVERS OPERATED IN REAL TIME KINEMATIC MODE. CONTROL MONUMENTS AND MONUMENTS ESTABLISHED WERE VERIFIED BY REDUNDANT OBSERVATIONS.



LEGEND

- - SET 5/8" BY 24" REBAR WITH A 1 1/4" RED PLASTIC CAP MARKED "OR PLS 1106, WA PLS 17372".
- x - CALCULATED POINT ONLY, NOT SET OR FOUND.
- ⊕ - SECTION CORNER POSITION, SET 2 1/2" BRASS CAP ON 1 1/4" BY 30" GALVANIZED IRON PIPE. SEE CORNER RECORD FILED SEPARATELY.
- ⊕ - APPROXIMATE CORNER POSITION, NOT SET OR FOUND.
- (XOX)D - RECORD DIMENSION FROM DEED DESCRIPTIONS.
- (XOX)BPA - RECORD DIMENSION FROM BPA POWER TRANSMISSION LINE MAPS (WALLA WALLA-PENDLETON), DATED 1940.
- ⓐ - INDICATES APPROXIMATE LOCATION OF NON-EXCLUSIVE EASEMENT FOR ACCESS ROAD PURPOSES, GRANTED TO U.S. DEPARTMENT OF ENERGY, BONNEVILLE POWER ADMINISTRATION BY INSTRUMENT NO. 2003-4400247, OFFICE OF RECORDS.
- — — - FENCE LINE--NOT ALL ARE SHOWN.

TRACT 1:

Portion of Tax Lot 6900 to attach to Tax Lot 6901:
 A tract of land located in the Northwest Quarter of Section 28, Township 3 North, Range 33 East, W.M., Umatilla County, Oregon, described as follows:
 BEGINNING at the Northwest Corner of Section 28; thence South 82°53'04" East a distance of 301.82 feet to a 5/8 inch rebar; thence South 82°21'24" East a distance of 460.27 feet to a 5/8 inch rebar; thence North 82°14'22" East a distance of 662.08 feet to a 5/8 inch rebar; thence North 69°17'59" East a distance of 19.46 feet; thence North 55°08'44" East a distance of 67.81 feet; thence North 35°48'31" East a distance of 56.87 feet; thence North 25°13'13" East a distance of 89.47 feet; thence North 18°44'49" East a distance of 189.28 feet to a 5/8 inch rebar which bears North 77°47'19" East a distance of 1702.06 feet from the Southwest Corner of said Section 21, the TRUE POINT OF BEGINNING for this description; thence South 73°16'52" East a distance of 55.87 feet; thence South 68°15'31" East a distance of 580.82 feet to a 5/8 inch rebar; thence North 61°33'56" East a distance of 158.61 feet to a 5/8 inch rebar; thence North 20°13'47" East a distance of 610.15 feet to a 5/8 inch rebar; thence North 32°41'11" East a distance of 44.70 feet; thence North 38°34'39" East a distance of 46.19 feet; thence North 17°26'17" West a distance of 476.22 feet to a 5/8 inch rebar; thence North 43°41'01" West a distance of 55 feet, more or less, to a point on the North line of said Southwest Quarter of Section 21; thence West along the North line of said Southwest Quarter of Section 21 a distance of 435 feet, more or less, to the Northwest Corner of said Southwest Quarter of Section 21; thence South along the West line of said Southwest Quarter of Section 21 a distance of 435 feet, more or less, to the TRUE POINT OF BEGINNING.

Parcel contains 1.62 acres more or less.

TRACT 2:

Portion of Tax Lot 6901 to attach to Tax Lot 6900:
 A tract of land located in the Southwest Quarter of Section 21, Township 3 North, Range 33 East, W.M., Umatilla County, Oregon, described as follows:
 Commencing at the Southwest Corner of Section 21; thence South 82°53'04" East a distance of 301.82 feet to a 5/8 inch rebar; thence South 82°21'24" East a distance of 460.27 feet to a 5/8 inch rebar; thence North 82°14'22" East a distance of 662.08 feet to a 5/8 inch rebar; thence North 69°17'59" East a distance of 19.46 feet; thence North 55°08'44" East a distance of 67.81 feet; thence North 35°48'31" East a distance of 56.87 feet; thence North 25°13'13" East a distance of 89.47 feet; thence North 18°44'49" East a distance of 189.28 feet to a 5/8 inch rebar which bears North 77°47'19" East a distance of 1702.06 feet from the Southwest Corner of said Section 21, the TRUE POINT OF BEGINNING for this description; thence South 73°16'52" East a distance of 55.87 feet; thence South 68°15'31" East a distance of 580.82 feet to a 5/8 inch rebar; thence North 61°33'56" East a distance of 158.61 feet to a 5/8 inch rebar; thence North 20°13'47" East a distance of 610.15 feet to a 5/8 inch rebar; thence North 32°41'11" East a distance of 44.70 feet; thence North 38°34'39" East a distance of 46.19 feet; thence North 17°26'17" West a distance of 476.22 feet to a 5/8 inch rebar; thence North 43°41'01" West a distance of 55 feet, more or less, to a point on the North line of said Southwest Quarter of Section 21; thence West along the North line of said Southwest Quarter of Section 21 a distance of 1227 feet, more or less, to a point located North 69°17'59" East a distance of 49 feet, more or less, to a point which bears N 69°17'59" East a distance of 49 feet, more or less, to a point which bears N 55°08'44" East a distance of 67.81 feet; thence North 35°48'31" East a distance of 56.87 feet; thence North 25°13'13" East a distance of 89.47 feet; thence North 18°44'49" East a distance of 189.28 feet to the TRUE POINT OF BEGINNING.

Parcel contains 7.93 acres more or less.

TRACT 3:

Portion of Tax Lot 6900 to attach to Tax Lot 6901:
 A tract of land located in the Southeast Quarter of Section 21, Township 3 North, Range 33 East, W.M., Umatilla County, Oregon, described as follows:
 Commencing at the Southwest Corner of Section 21; thence South 82°53'04" East a distance of 301.82 feet to a 5/8 inch rebar; thence South 82°21'24" East a distance of 460.27 feet to a 5/8 inch rebar; thence North 82°14'22" East a distance of 662.08 feet to a 5/8 inch rebar; thence North 69°17'59" East a distance of 19.46 feet; thence North 55°08'44" East a distance of 67.81 feet; thence North 35°48'31" East a distance of 56.87 feet; thence North 25°13'13" East a distance of 89.47 feet; thence North 18°44'49" East a distance of 189.28 feet to a 5/8 inch rebar; thence South 73°16'52" East a distance of 55.87 feet; thence South 68°15'31" East a distance of 580.82 feet to a 5/8 inch rebar; thence North 61°33'56" East a distance of 158.61 feet to a 5/8 inch rebar; thence North 20°13'47" East a distance of 610.15 feet to a 5/8 inch rebar; thence North 32°41'11" East a distance of 44.70 feet; thence North 38°34'39" East a distance of 46.19 feet; thence North 17°26'17" West a distance of 476.22 feet to a 5/8 inch rebar; thence North 43°41'01" West a distance of 55 feet, more or less, to a point on the North line of said Southwest Quarter of Section 21; thence West along the North line of said Southwest Quarter of Section 21 a distance of 435 feet, more or less, to the Northwest Corner of said Southwest Quarter of Section 21; thence South along the West line of said Southwest Quarter of Section 21 a distance of 435 feet, more or less, to a point which bears South 38°34'39" West a distance of 1785 feet, more or less, to a point which bears North 38°34'39" East a distance of 448 feet, more or less, to the TRUE POINT OF BEGINNING.

Tract contains 14.51 acres more or less.

REGISTERED PROFESSIONAL LAND SURVEYOR

William R. Wells

OREGON
JULY 22, 1977
WILLIAM R. WELLS
1106
RENEWS 6/30/08

WILLIAM R. WELLS, PLS
2602 NE RIVERSIDE PLACE
P.O. BOX 1696
PENDLETON, OR 97801
PHONE: (541) 276-6362

PROJECT:
BOUNDARY ADJUSTMENT SURVEY FOR:
PAHL RANCHES INC.

LOCATED IN SECTIONS 20, 21 AND 28,
TOWNSHIP 3 NORTH, RANGE 33 EAST, W.M.,
UMATILLA COUNTY, OREGON.

DATE: 06/07 DR. BY: DMT
CK. BY: WRW NO: 04-946

2 map sheets