

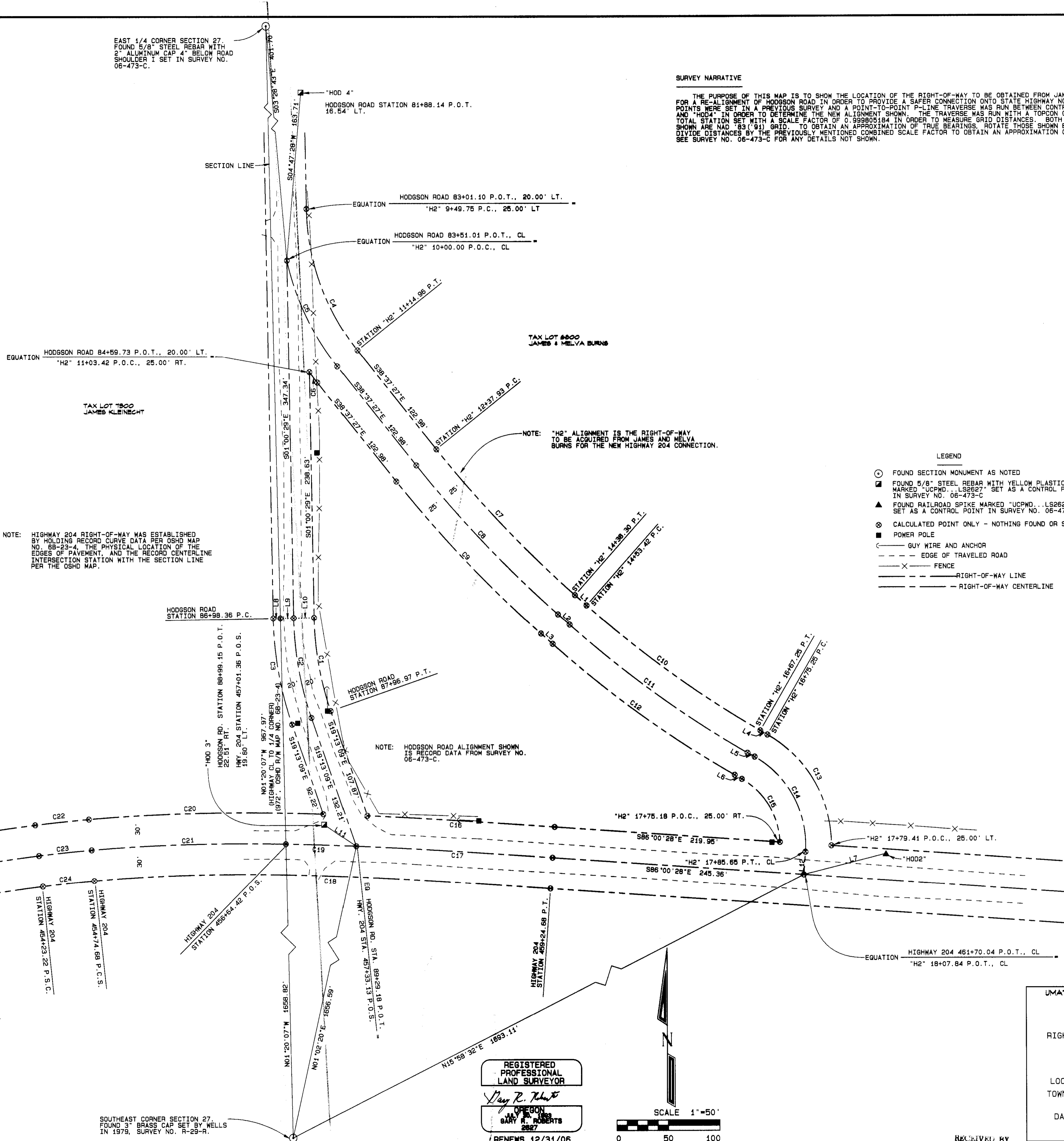
STATE PLANE COORDINATES

OREGON NORTH ZONE 3601 - INTERNATIONAL FEET - NAD '83 ('91)

POINT I.D.	NORTHING	EASTING
EAST 1/4 CORNER SECTION 27	783,452.96	8,764,463.90
SOUTHEAST CORNER SECTION 27	780,826.88	8,764,525.11
HWY 204 449+73.22 P.S.C., CL	782,372.43	8,763,807.86
HWY 204 454+23.22 P.S.C., CL	782,474.06	8,764,245.73
HWY 204 454+74.68 P.C.S., CL	782,479.47	8,764,296.90
HWY 204 456+64.42 P.O.S., CL	782,485.25	8,764,486.46
HWY 204 457+33.13 P.O.S., CL	782,483.20	8,764,555.15
HWY 204 459+24.68 P.T., CL	782,471.68	8,764,746.34
HWY 204 461+70.04 P.O.T., CL	782,454.50	8,764,991.10
"H2" 10+00.00 P.O.C., CL	783,052.00	8,764,488.28
"H2" 11+14.96 P.T., CL	782,949.17	8,764,537.40
"H2" 12+37.93 P.C., CL	782,853.10	8,764,614.16
"H2" 14+38.30 P.T., CL	782,708.03	8,764,752.02
"H2" 14+53.42 P.C., CL	782,698.00	8,764,763.33
"H2" 16+67.25 P.T., CL	782,573.22	8,764,936.54
"H2" 16+75.25 P.C., CL	782,569.22	8,764,943.46
"H2" 17+85.65 P.T., CL	782,476.74	8,764,992.65
HODGSON ROAD 86+98.36 P.C., CL	782,704.71	8,764,494.39
HODGSON ROAD 87+96.97 P.T., CL	782,608.04	8,764,511.63
"HOD2"	782,474.78	8,765,070.89
"HOD3"	782,504.14	8,764,524.01
"HOD4"	783,215.14	8,764,501.95

SURVEY NARRATIVE

THE PURPOSE OF THIS MAP IS TO SHOW THE LOCATION OF THE RIGHT-OF-WAY TO BE OBTAINED FROM JAMES AND MELVA BURNS FOR A RE-ALIGNMENT OF HODGSON ROAD IN ORDER TO PROVIDE A SAFER CONNECTION ONTO STATE HIGHWAY NO. 204. CONTROL POINTS WERE SET IN A PREVIOUS SURVEY AND A POINT-TO-POINT P-LINE TRAVERSE WAS RUN BETWEEN CONTROL POINTS "HOD2" AND "HOD4" IN ORDER TO DETERMINE THE NEW ALIGNMENT SHOWN. THE TRAVERSE WAS RUN WITH A TOPCON GTS-813A ROBOTIC TOTAL STATION SET WITH A SCALE FACTOR OF 0.999805184 IN ORDER TO MEASURE GRID DISTANCES. BOTH DISTANCES AND BEARINGS SHOWN ARE NAD '83 ('91) GRID. TO OBTAIN AN APPROXIMATION OF TRUE BEARINGS, ROTATE THOSE SHOWN BY 01°33'50" CLOCKWISE. DIVIDE DISTANCES BY THE PREVIOUSLY MENTIONED SCALE FACTOR TO OBTAIN AN APPROXIMATION OF GROUND DISTANCES. SEE SURVEY NO. 06-473-C FOR ANY DETAILS NOT SHOWN.



NOTE: HIGHWAY 204 RIGHT-OF-WAY WAS ESTABLISHED BY HOLDING RECORD CURVE DATA PER OSHD MAP NO. 88-29-4. THE PHYSICAL LOCATION OF THE EDGES OF PAVEMENT, AND THE RECORD CENTERLINE INTERSECTION STATION WITH THE SECTION LINE PER THE OSHD MAP.

NOTE: "H2" ALIGNMENT IS THE RIGHT-OF-WAY TO BE ACQUIRED FROM JAMES AND MELVA BURNS FOR THE NEW HIGHWAY 204 CONNECTION.

NOTE: HODGSON ROAD ALIGNMENT SHOWN IS RECORD DATA FROM SURVEY NO. 06-473-C.

- LEGEND
- FOUND SECTION MONUMENT AS NOTED
 - FOUND 5/8" STEEL REBAR WITH YELLOW PLASTIC CAP MARKED "UCPMD...LS2627" SET AS A CONTROL POINT IN SURVEY NO. 06-473-C
 - ▲ FOUND RAILROAD SPIKE MARKED "UCPMD...LS2627" SET AS A CONTROL POINT IN SURVEY NO. 06-473-C
 - ⊙ CALCULATED POINT ONLY - NOTHING FOUND OR SET
 - POWER POLE
 - GUY WIRE AND ANCHOR
 - - - EDGE OF TRAVELED ROAD
 - - - FENCE
 - - - RIGHT-OF-WAY LINE
 - - - RIGHT-OF-WAY CENTERLINE

CURVE TABLE

CURVE NO.	DELTA	RADIUS	ARC LENGTH	CHORD BEARING	CHORD LENGTH
C1	18°12'40"	290.24'	92.25'	S10°06'49"E	91.87'
C2	18°12'40"	310.24'	98.61'	S10°06'49"E	98.20'
C3	18°12'40"	330.24'	104.97'	S10°06'49"E	104.53'
C4	37°36'57"	226.64'	148.79'	S19°48'57"E	146.13'
C5	26°10'30"	251.64'	114.96'	S25°32'11"E	113.96'
C6	02°37'35"	276.64'	12.68'	S37°18'39"E	12.68'
C7	09°49'52"	1142.74'	196.08'	S43°32'22"E	195.84'
C8	09°49'52"	1167.74'	200.37'	S43°32'22"E	200.12'
C9	09°49'52"	1192.74'	204.66'	S43°32'22"E	204.41'
C10	11°32'52"	1035.97'	208.80'	S54°13'44"E	208.44'
C11	11°32'52"	1060.97'	213.84'	S54°13'44"E	213.47'
C12	11°32'52"	1085.97'	218.87'	S54°13'44"E	218.50'
C13	80°22'47"	123.84'	130.51'	S29°48'45"E	124.55'
C14	63°59'41"	98.84'	110.40'	S28°00'19"E	104.75'
C15	57°55'29"	73.84'	74.65'	S31°02'26"E	71.51'
C22	02°03'30"	1462.39'	52.54'	N83°57'47"E	52.54'
C23	02°03'30"	1432.39'	51.46'	N83°57'47"E	51.46'
C24	02°03'30"	1402.39'	50.38'	N83°57'47"E	50.38'

LINE TABLE

LINE NO.	BEARING	DISTANCE
L1	S48°27'14"E	15.12'
L2	S48°27'14"E	15.12'
L3	S48°27'14"E	15.12'
L4	S60°00'09"E	8.00'
L5	S60°00'09"E	8.00'
L6	S60°00'09"E	8.00'
L7	N75°48'31"E	82.30'
L8	N88°59'31"E	6.96'
L9	N88°59'31"E	13.04'
L10	N88°59'31"E	20.00'
L11	S56°05'06"E	37.53'
L12	S03°59'32"W	22.19'

CENTERLINE SPIRAL DATA (BOTH SPIRALS)

LENGTH = 450'
S = 9'00"
a = 0.889

SPIRAL CHORD BEARINGS AND DISTANCES

CURVE NO.	CHORD BEARING	CHORD DISTANCES
C16	S86°29'58"E	182.74'
C17	S86°33'05"E	191.53'
C18	S88°59'29"E	444.80'
C19	S88°17'36"E	68.72'
C20	N88°44'35"E	228.88'
C21	N88°15'13"E	189.66'
C25	N76°55'55"E	454.21'
C26	N76°55'59"E	449.51'
C27	N76°55'02"E	444.80'

REGISTERED PROFESSIONAL LAND SURVEYOR
GARY R. ROBERTS
RENEWS 12/31/06

SCALE 1"=50'
0 50 100

UMATILLA COUNTY ROAD DEPARTMENT
3420 WESTGATE
PENDLETON, OREGON 97601
PHONE 541/276-3424
RIGHT-OF-WAY ACQUISITION SURVEY
HODGSON ROAD
COUNTY ROAD NO. 637
LOCATED IN SECTIONS 26 AND 27
TOWNSHIP 4 NORTH RANGE 36 E.W.M.
DATE OF SURVEY: AUGUST, 2006
SHEET 1 OF 1

Umatilla County Surveyor
Date 8-06
Survey No. 06-473-C