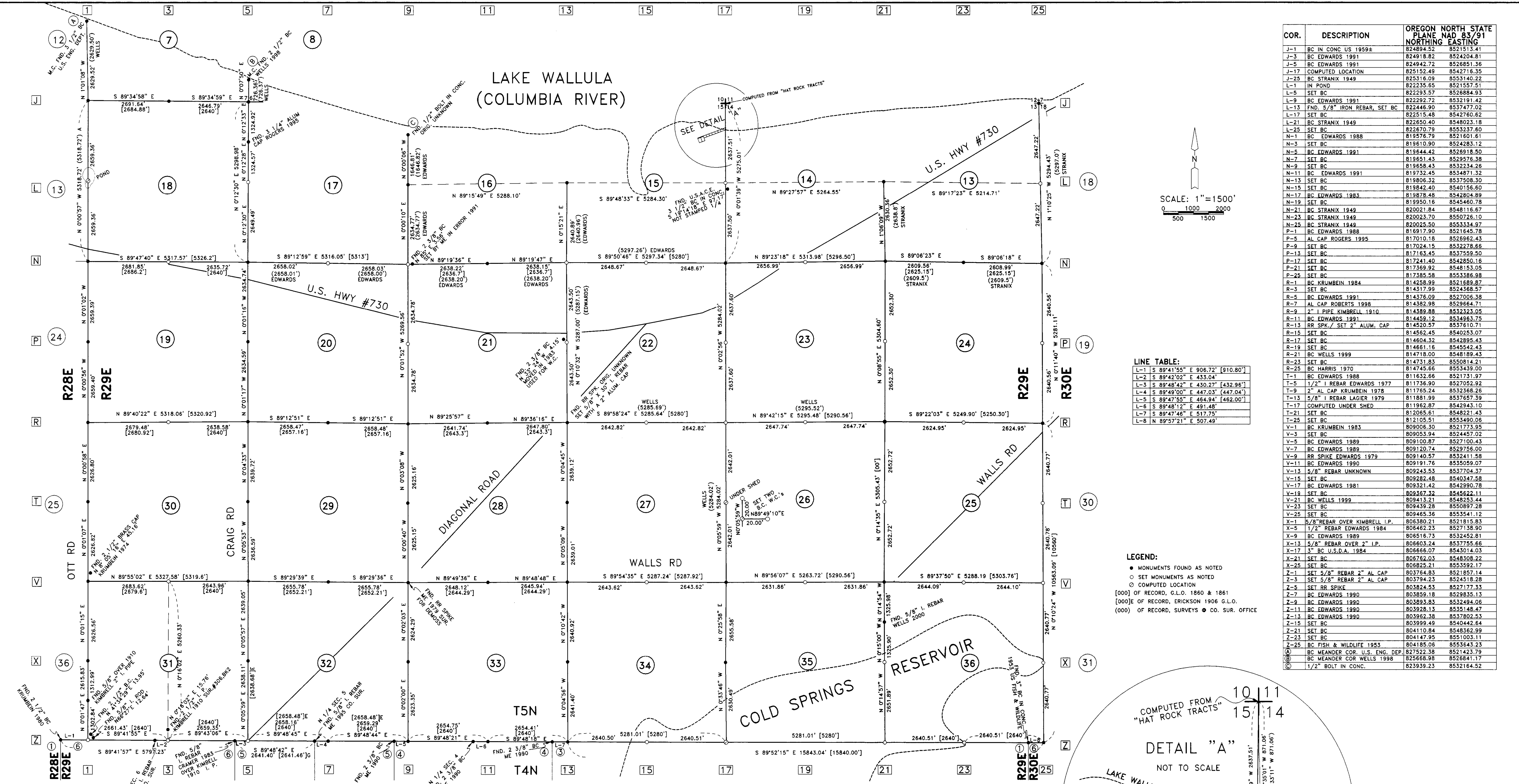


LAKE WALLULA (COLUMBIA RIVER)



COR.	DESCRIPTION	OREGON NORTH STATE PLANE NAD 83/91	NORTHING	EASTING
J-1	BC IN COND US 1959±	82484.52	852151.41	
J-3	BC EDWARDS 1991	824918.82	8524204.81	
J-5	BC EDWARDS 1991	824942.72	8526851.36	
J-17	COMPUTED LOCATION	825152.49	8542716.35	
J-25	BC STRANIX 1949	825316.09	8553146.22	
L-1	IN POND	822235.65	8521557.51	
L-5	SET BC	822295.57	8526884.93	
L-9	BC EDWARDS 1991	822292.72	8533319.42	
L-13	FND. 5/8" IRON REBAR, SET BC	822446.90	8537477.02	
L-17	SET BC	822515.48	8542760.62	
L-21	BC STRANIX 1949	822650.40	8548023.18	
L-25	SET BC	822670.79	8553237.60	
N-1	BC EDWARDS 1988	819576.79	8521601.61	
N-3	SET BC	819610.90	8524283.12	
N-5	BC EDWARDS 1991	819644.42	8526918.50	
N-7	SET BC	819651.43	8529276.38	
N-9	SET BC	819658.43	8532234.26	
N-11	BC EDWARDS 1991	819732.45	8534871.32	
N-13	SET BC	819806.32	8537508.30	
N-15	SET BC	819842.40	8540156.60	
N-17	BC EDWARDS 1991	819878.48	8542604.89	
N-19	SET BC	819914.51	8545480.78	
N-21	BC STRANIX 1949	820021.84	8548116.67	
N-23	BC STRANIX 1949	820023.70	8550726.10	
N-25	BC STRANIX 1949	820025.50	8553334.97	
P-1	BC EDWARDS 1988	816917.90	8521645.78	
P-5	AL CAP ROGERS 1995	817010.18	8526962.43	
P-9	SET BC	817024.15	8527278.66	
P-13	SET BC	817163.45	8527559.50	
P-17	SET BC	817241.40	852850.16	
P-21	SET BC	817369.92	8534815.05	
P-25	SET BC	817385.58	853386.98	
R-1	BC KRUMBEIN 1984	814258.99	8521689.87	
R-3	SET BC	814317.99	8524568.57	
R-5	BC EDWARDS 1991	814376.09	8527006.38	
R-7	AL CAP ROBERTS 1998	814382.98	8529664.71	
R-9	2" I PIPE KIMBRELL 1910	814389.88	8532323.05	
R-11	BC EDWARDS 1991	814459.12	8534863.75	
R-13	RR SPK. / SET 2" ALUM. CAP	814520.57	8537610.71	
R-15	SET BC	814562.45	8540253.07	
R-17	SET BC	814604.32	8542695.43	
R-19	SET BC	814661.16	8545442.43	
R-21	BC WELLS 1999	814718.00	8548189.43	
R-23	SET BC	814731.83	8550814.21	
R-25	BC HARRIS 1970	814745.66	8553439.00	
T-1	BC EDWARDS 1988	811632.66	8521731.97	
T-5	1/2" REBAR EDWARDS 1977	811736.90	8527052.92	
T-9	2" AL CAP KRUMBEIN 1978	811765.24	8532368.28	
T-13	5/8" I REBAR LAGIER 1979	811881.99	8537657.39	
T-17	COMPUTED UNDER SHED	811962.87	8542943.10	
T-21	SET BC	812065.61	8548221.43	
T-25	SET BC	812105.51	8553490.06	
V-1	BC KRUMBEIN 1983	809006.30	8521773.95	
V-3	SET BC	809053.94	8524457.02	
V-5	BC EDWARDS 1989	809100.87	8527100.43	
V-7	BC EDWARDS 1989	809120.74	8529756.00	
V-9	RR SPIKE EDWARDS 1979	809140.57	8532411.58	
V-11	BC EDWARDS 1990	809191.76	8535059.07	
V-13	5/8" REBAR UNKNOWN	809243.53	8537704.37	
V-15	SET BC	809282.48	8540347.58	
V-17	BC EDWARDS 1981	809321.42	8542990.78	
V-19	SET BC	809367.32	8545622.11	
V-21	BC WELLS 1999	809413.21	8548253.44	
V-23	SET BC	809439.28	8550897.28	
V-25	SET BC	809465.36	8553541.12	
X-1	5/8" REBAR OVER KIMBRELL I.P.	806380.21	8521815.83	
X-5	1/2" REBAR EDWARDS 1984	806462.23	8527138.90	
X-9	BC EDWARDS 1989	806516.73	8532452.81	
X-13	5/8" REBAR OVER 2" I.P.	806603.24	8537755.66	
X-17	3" BC U.S.D.A. 1984	806666.07	8543014.03	
X-21	SET BC	806762.03	8548308.22	
X-25	SET BC	806825.21	8553592.17	
Z-1	SET 5/8" REBAR 2" AL CAP	803764.83	8521857.14	
Z-3	SET 5/8" REBAR 2" AL CAP	803794.23	8524518.28	
Z-5	SET RR SPIKE	803824.53	8527177.33	
Z-7	BC EDWARDS 1990	803859.18	8529835.13	
Z-9	BC EDWARDS 1990	803893.83	8532494.06	
Z-11	BC EDWARDS 1990	803928.13	8535148.47	
Z-13	BC EDWARDS 1990	803962.38	8537802.53	
Z-15	SET BC	803999.49	8540442.64	
Z-17	SET BC	804110.84	8543162.99	
Z-19	SET BC	804147.95	8545903.11	
Z-23	BC FISH & WILDLIFE 1953	804185.06	8553643.23	
Z-25	BC MEANDER COR. U.S. ENG. DEP. 1910	827522.38	8521423.79	
(A)	BC MEANDER COR. U.S. ENG. DEP. 1910	825666.98	8526841.17	
(B)	BC MEANDER COR. WELLS 1998	823939.23	8532164.52	
(C)	1/2" BOLT IN CONC.			

LINE TABLE:

L-1	S 89°41'55" E 906.72' [910.80']
L-2	S 89°42'02" E 433.04'
L-3	S 89°48'42" E 430.27' [432.96']
L-4	S 89°49'00" E 447.03' [447.04']
L-5	S 89°47'55" E 464.94' [462.00']
L-6	S 89°48'12" E 491.48'
L-7	S 89°47'46" E 517.75'
L-8	N 89°57'21" E 507.49'

LEGEND:

- MONUMENTS FOUND AS NOTED
- SET MONUMENTS AS NOTED
- COMPUTED LOCATION
- [000] OF RECORD, G.L.O. 1860 & 1861
- [000] OF RECORD, ERICKSON 1906 G.L.O.
- (000) OF RECORD, SURVEYS ● CO. SUR. OFFICE

NARRATIVE:

THE PURPOSE OF THIS SURVEY IS TO MONUMENT AND REFERENCE GENERAL LAND OFFICE CORNERS WHICH LIE IN TOWNSHIP 5 NORTH, RANGE 29 EAST, WILLAMETTE MERIDIAN, UMATILLA COUNTY, UNDER A CONTRACT WITH UMATILLA COUNTY DATED JULY 2005.

THE SOUTH LINE OF THIS TOWNSHIP WAS SURVEYED BY MAXON AND HURD IN 1860 UNDER CONTRACT #50. THE EAST LINE WAS SURVEYED IN 1861 BY PAYNE UNDER CONTRACT #100. THE WEST LINE AND THE INTERIOR WERE SURVEYED BY DAVENPORT IN 1861 UNDER CONTRACT #101. ALL MONUMENTS SET IN THESE THREE CONTRACTS WERE POSTS WITH MOUNDS.

COORDINATES ARE NAD 83/91. THE CONTROL POINTS USED WERE CASWELLS 1993 POINT NUMBERS 9307 AND 9308 EAST OF UMATILLA AND BAALMANS POINT #203 SET FOR MY COUNTY MONUMENTATION SURVEY 1996-2 IN T 4 N, R 29 E, JUST SOUTH OF THE SE CORNER OF THIS PROJECT. THOSE POINTS WERE SET FROM NGS HIGH PRECISION GEODETIC CONTROL NETWORK POINTS B340 AND "STANFIELD EAST BASE RESET".

DATA WAS COLLECTED USING REAL TIME KINEMATIC FROM THESE POINTS AND OTHER RANDOM POINTS SET WITHIN THE PROJECT. THE INSTRUMENT USED WAS A TOPCON HIPER-4.

BEARINGS AND DISTANCES SHOWN ARE TRUE. THE COMBINED SCALE FACTOR IS .99995120 AND THETA IS 0° 56' 04" AT POINT # 47 WHICH IS THE NORTHEAST CORNER OF SECTION 28.

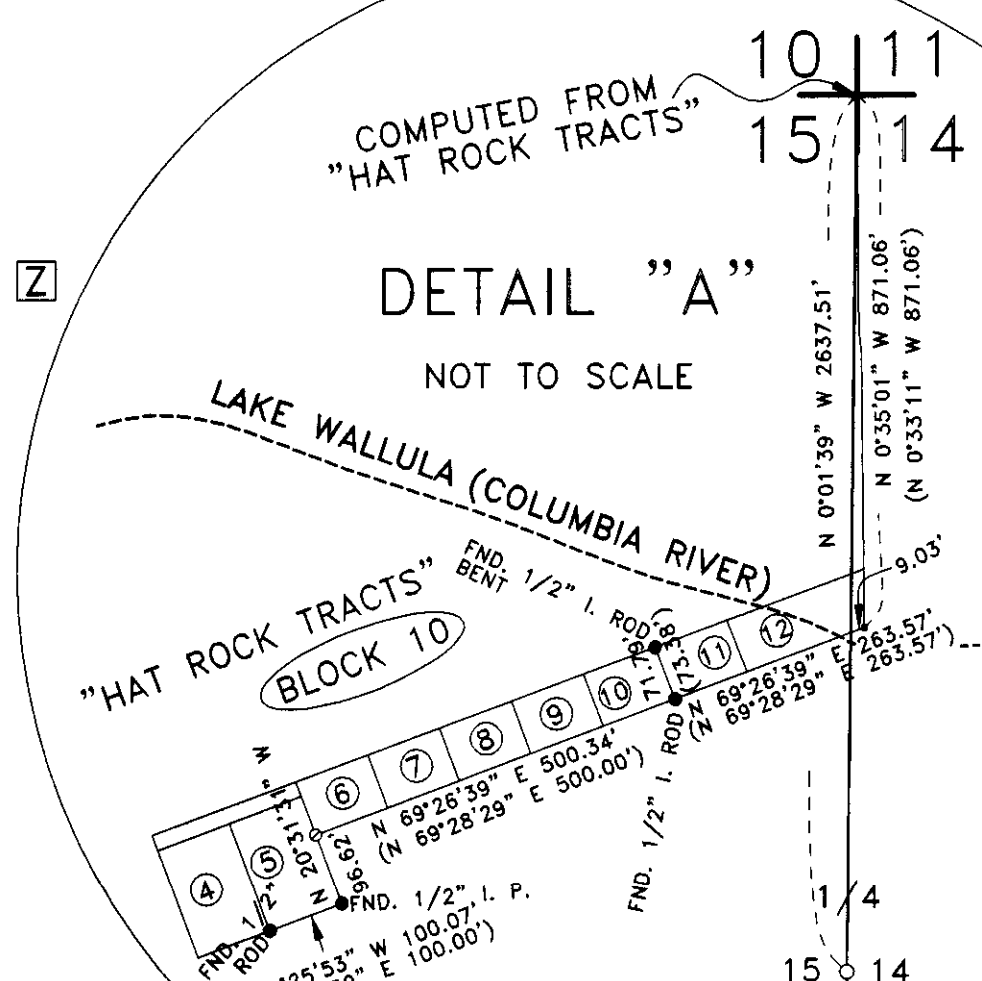
THE EAST QUARTER CORNER OF SECTION 15 WAS SET BY SINGLE PROPORTION USING THE COMPUTED NE CORNER OF SECTION 15 DERIVED FROM TIES TO MONUMENTS IN "HAT ROCK TRACTS". THE SW CORNER OF SECTION 15 WAS SET AT THE LOCATION OF AN OBLITERATED MONUMENT BY RETRACING MY 1983 AND 1991 SURVEYS WHICH TIED THAT MONUMENT. THE W 1/4 OF SECTION 22 WAS SET BY SINGLE PROPORTION AND LIES S 33° E 4.15 FEET FROM A BRASS CAP THAT SOMEONE MOVED IN 1983 SOON AFTER I SET IT AT THE CORRECT POSITION. I SET THE SW CORNER OF SECTION 31 AT THE INTERSECTION OF KIMBRELL'S MONUMENTS ALONG THE WEST LINE (CO SUR. #306 IN 1910) WITH MONUMENTS ALONG THE STANDARD PARALLEL. I SET THE SW CORNER OF SECTION 32 AT THE INTERSECTION OF THE WEST LINE OF SECTION 32 WITH MONUMENTS ON THE STANDARD PARALLEL. THAT LOCATION VERY NEARLY MATCHES THE G.L.O. SURVEY DONE BY ERICKSON IN 1906.

FOR A DESCRIPTION OF MONUMENTS FOUND AND SET LOOK AT THE CORNER RESTORATION FORMS FILED AT THE SAME TIME AS THIS MAP WITH THE UMATILLA COUNTY SURVEYORS OFFICE.

REGISTERED PROFESSIONAL LAND SURVEYOR

G. Dennis Edwards

OREGON
JULY 16, 1971
G. DENNIS EDWARDS
9 5 1
RENEWS 12/31/2007



SURVEY FOR UMATILLA COUNTY
IN T 5 N, R 29 E, W.M.,
UMATILLA COUNTY, OREGON
12/30/2005 JOB# S0507126
EDWARDS SURVEYING P.O. BOX 763
541-567-3336 HERMISTON, OREGON 97838
DRAWN BY JMC

RECEIVED BY
Umatilla County Surveyors
Date 5-06
Rec'd by KE
No. 06-265-C