

TO WALLA WALLA

TO PENDLETON

MILTON-FREEWATER

SHEET 2

SHEET 4

SHEET 6

SHEET 5

SHEET 3

SHEET 1



BASIS OF BEARINGS  
1983-81 OREGON STATE PLANE  
COORDINATE SYSTEM NORTH ZONE GRID  
BEARINGS.

KEY

NOT TO SCALE

REGISTERED  
PROFESSIONAL  
LAND SURVEYOR

*Greg E. Flowers*

OREGON  
JUNE 30, 1997  
GREG E. FLOWERS  
02820LS  
RENEWS 12/31/05  
9/15/04

RECEIVED BY  
Umatilla County Surveyor  
Date 1-05  
Drawn by KK  
No. 05-014-9

A SURVEY LOCATED IN TOWNSHIP 5 NORTH, RANGE 35 EAST, W.M., SECTIONS 1, 2, 11, 12 AND 13 AND TOWNSHIP 6 NORTH, RANGE 35 EAST, W.M., SECTION 36. FOR: THE UMATILLA COUNTY SURVEYOR, P.O. BOX 1126, PENDLETON, OREGON 97801	SCALE	DATE	TOMKINS LAND SURVEYING, INC. 5 N. COLVILLE WALLA WALLA, WA. 99362 115 W. HERMISTON AV. #140 HERMISTON, OR. 97838 (509) 522-4843 (541)564-4448	DRAWING NUMBER
	HOR. VERT. NONE	SEPTEMBER		97838

**LEGEND**

- FOUND SURVEY MONUMENT AS NOTED
- FOUND A 5/8" IRON PIN INSIDE OF A 1 1/2" IRON PIPE PER THE OFFICIAL PLAT OF SEAQUIST, LONG, AND SHORT TRACT, BK. 12 OF PLATS, PAGE 17, OR BRINKERS FIRST ADDITION, BK. 13 OF PLATS, PG. 6, OR KNABE'S FIRST ADDITION, BK. 12 OF PLATS, PG. 42.
- FOUND A 5/8" IRON PIN IN A MONUMENT CASE PER THE OFFICIAL PLAT OF SEAQUIST & LONG TRACT 1, BK. 12 OF PLATS, PG. 42.
- SET SURVEY MONUMENT AS NOTED.
- SET A 5/8" IRON PIN WITH A YELLOW PLASTIC CAP STAMPED "TOMKINS SURVEYING"
- ⊕ CALCULATED POSITION NOTHING FOUND OR SET

OREGON STATE PLANE COORDINATE SYSTEM NORTH ZONE COORDINATES, (INTERNATIONAL FEET) AND GPS DERIVED ORTHOMETRIC HEIGHTS. THESE POSITIONS WERE DERIVED USING TOPCON DUAL FREQUENCY GEODETIC GLOBAL POSITION SYSTEM (GPS) RECEIVERS UTILIZING REAL TIME KINEMATIC (RTK) PROCEDURES.

- - - - - SECTION OR SECTION SUBDIVISION LINE.
- — — — — APPARENT SUBDIVISION LINE
- — — — — APPARENT CENTERLINE

**NOTES:**

1. THE PERIMETER OF EVAN'S ADDITION WAS CALCULATED BASED ON THE L.A. WILSON SURVEY DATED MARCH 17, 1903 OF RECORD IN THE OFFICE OF THE MILTON-FREEWATER CITY ENGINEER. THIS SURVEY SHOWS THE RELATIONSHIP OF THE CORNERS OF EVAN'S ADDITION TO THE CORNERS OF THE S.W. 1/4 OF THE N.E. 1/4 OF SECTION 2. THE PLAT OF EVAN'S ADDITION WAS PREPARED BY WILSON AND DATED OCTOBER 6, 1892. HOWEVER, IT WAS NOT RECORDED UNTIL DECEMBER 18, 1903. AFTER WILSON RE-SUBDIVIDED SECTION 2, THE IMPROVEMENT IN EVAN'S ADDITION AGREE WITH THE PLATTED LOCATION EVIDENCING THE FACT THAT THE ADDITION WAS BUILT TO THE PLAT AND NOT TO THE EXISTING MONUMENTATION.
2. SUNSET ADDITION AND OLINGER'S ADDITION ARE BOTH REPLATS OF PORTIONS OF EVAN'S ADDITION AND THE CORNERS THAT I HAVE SET WERE BASED ON PROPORTIONED DISTANCES FROM THE COMPUTED CORNERS OF EVAN'S ADDITION.
3. THIS SURVEY WAS PERFORMED AT THE REQUEST OF THE UMATILLA COUNTY SURVEYOR TO LOCATE OR SET TWO MONUMENTS ON THE PERIMETER OF EACH SUBDIVISION RECORDED IN MILTON-FREEWATER, OREGON. THE SURVEY WAS PERFORMED USING TOPCON DUAL FREQUENCY GEODETIC GLOBAL POSITIONING (GPS) RECEIVERS HAVING STANDARD ERRORS OF 2 CM + 2 PPM TIMES BASE LINE LENGTH, UTILIZING REAL TIME KINEMATIC (RTK) METHODS. THE INITIAL RTK BASE STATIONS POSITIONS WERE DETERMINED BY STATIC GPS OBSERVATIONS USING USGS HIGH ORDER TRIANGULATION STATIONS "WAL AIR 2", "ATHENA" AND "BURDEN" AS THE CONTROLLING MONUMENTS. THIS GPS NETWORK WAS OBSERVED IN 2002 USING TOPCON DUAL FREQUENCY GPS RECEIVERS. LOCATIONS THAT COULD NOT BE OBSERVED USING GPS WERE LOCATED USING A TOCON AUTOMATIC TOTAL STATION HAVING STANDARD ERRORS OF 00'00"03" ANGULAR AND 3 PPM TIMES DISTANCE ALL MEASURED DISTANCES WERE SCALED TO GRID DISTANCES.
4. THE BEARINGS, DISTANCES AND COORDINATE VALUES SHOWN ON THIS RECORD OF SURVEY ARE OREGON NORTH ZONE GRID BEARINGS, DISTANCES AND COORDINATES, WHERE 1 FOOT EQUALS 0.3048 METERS.
5. MONUMENTS SHOWN WERE VISITED BETWEEN OCTOBER 2003 AND AUGUST 2004.

FOUND A 2 1/2" BRASS CAP IN AN ALUMINUM MONUMENT CASE MARKING THE CENTER 1/4 OF SECTION 35 AS SHOWN ON SURVEY NO. 92-064-B  
N: 841133.69  
E: 8735477.26  
ELEV: 940

FOUND A 2 1/2" BRASS CAP MARKING THE 1/4 CORNER BETWEEN SECTIONS 35 AND 36.  
N: 841180.50  
E: 8736099.12  
ELEV: 951

FOUND A 5/8" IRON PIN WITH A YELLOW PLASTIC CAP INSCRIBED LS 2316 PER THE PLAT OF HAYDEN GLEN I OF HAYDEN GLEN II MARKING THE STREET CENTERLINE.

POINT	NORTHING	EASTING	DESCRIPTION
298	838798.50	8737035.39	IPC CL NE 13TH
297	839215.15	8737960.94	IPC CL NE 13TH
298	839171.03	8738006.83	IPC CL NE LUPINE
299	838981.28	8738010.54	IPC CL NE LUPINE
300	838971.56	8738014.27	IPC CL NE LUPINE
301	838745.72	8737970.19	IPC CL NE 13TH
302	838729.41	8737156.94	IPC CL NE 13TH
303	838767.12	8737111.62	IPC CL NE 13TH
304	838848.20	8737098.65	IPC CL LILAC
305	838879.88	8737081.63	IPC CL LILAC
306	838971.58	8736999.69	IPC CL LILAC
307	838966.88	8737014.05	IPC CL 14TH
308	838961.90	8737047.32	IPC CL 14TH

**BASIS OF BEARINGS**  
1983-91 OREGON STATE PLANE COORDINATE SYSTEM NORTH ZONE GRID BEARINGS.

FOUND A 2 1/2" BRASS CAP FLUSH WITH THE ROAD SURFACE, PER SURVEY NO. 02-18-B, SOUTHWEST CORNER OF SECTION 35. A 2 1/2" BRASS CAP PER SURVEY S-157 BEARS S 04°01'14" E 14.71'.  
N: 838429.382  
E: 8732850.439  
ELEV: 944

FOUND A 2 1/2" BRASS CAP IN A MONUMENT CASE SET BY ANDERSON PERRY AND ASSOCIATES AT THE PREVIOUSLY MONUMENTED LOCATION AS A PART OF THE RECONSTRUCTION OF N. LAMB STREET.  
N: 838486.11  
E: 8735504.97  
ELEV: 970

FOUND A RAILROAD SPIKE AT THE INTERSECTION OF POWELL ROAD AND NORTH MAIN AS SHOWN ON THE PLAT OF HAYDEN GLEN I & II.  
N: 839338.80  
E: 8736808.17  
ELEV: 966

FOUND A 5/8" IRON PIN WITH A YELLOW PLASTIC CAP INSCRIBED LS2316 PER THE PLAT OF HAYDEN GLEN I, N.W. CORNER OF HAYDEN GLEN I.  
N: 839339.17  
E: 8736827.37  
ELEV: 966

FOUND A 5/8" IRON PIN WITH A YELLOW PLASTIC CAP INSCRIBED LS2316 PER THE PLAT OF HAYDEN GLEN I, N.E. CORNER OF HAYDEN GLEN I.  
N: 839350.95  
E: 8737447.24  
ELEV: 969

FOUND A 5/8" IRON PIN WITH A YELLOW PLASTIC CAP INSCRIBED LS2316 PER THE PLAT OF HAYDEN GLEN II, N.E. CORNER OF HAYDEN GLEN II.  
N: 839364.69  
E: 8738127.81  
ELEV: 971

FOUND A 5/8" IRON PIN WITH A YELLOW PLASTIC CAP INSCRIBED LS2316 PER THE PLAT OF HAYDEN GLEN II.  
N: 838878.96  
E: 8738143.19  
ELEV: 978

FOUND A 2" IRON PIPE WITH A YELLOW PLASTIC CAP INSCRIBED LS2316 PER THE PLAT OF HAYDEN GLEN II. THE INITIAL POINT OF SAID ADDITION.  
N: 838535.58  
E: 8738457.92  
ELEV: 983

SET A 5/8" X 30" IRON REBAR WITH A YELLOW PLASTIC CAP INSCRIBED "TOMKINS SURVEYING" ON THE EASTERLY RIGHT OF WAY OF LAMB STREET (THE OLD MILTON HIGHWAY) THE RECORD PLAT DISTANCE NORTH OF THE NORTHERLY BRASS CAP AT NW CORNER OF ROWLEY'S ADDITION.  
N: 839139.39  
E: 8735537.39

FOUND A 1 1/4" AXLE, 0.98' WEST OF THE EAST RIGHT OF WAY OF THE OLD MILTON HIGHWAY, HELD AS THE NW CORNER OF ROWLEY'S ADDITION.  
N: 838211.18  
E: 8736145.62  
ELEV: 976

FOUND A 1/2" IRON PIN WITH A YELLOW PLASTIC CAP STAMPED "WA 12696 OR 1039" S00°58'54"E 2.16'.  
N: 837745.92  
E: 8735542.15

FOUND AN IRON ROD IN CONCRETE IN A MONUMENT CASE AT 10TH & Vining.  
N: 837901.32  
E: 8736148.42  
ELEV: 977

FOUND AN IRON ROD IN CONCRETE IN A MONUMENT CASE AT 11TH & EVANS.  
N: 838217.46  
E: 8736421.66  
ELEV: 978

FOUND A RAILROAD SPIKE AT THE INTERSECTION OF 9TH & Vining.  
N: 837907.52  
E: 8736422.42  
ELEV: 980

FOUND A 5/8" IRON PIN AT 10TH & PERKINS.  
N: 837913.94  
E: 8736926.26  
ELEV: 982

FOUND A 5/8" IRON PIN AT 10TH & PERKINS.  
N: 837553.50  
E: 8736897.27  
ELEV: 984

FOUND A 2 1/2" BRASS CAP IN AN ODOT MONUMENT CASE, NE 1/16 S. 2.  
N: 837198.01  
E: 8736828.26

FOUND 5/8" IRON PIN AS SHOWN ON SURVEY NO. 00-135-C MARKING THE CENTER OF WARD STREET AT THE NORTH LINE OF RAILROAD ADDITION.  
N: 837808.16  
E: 8736914.50

FOUND 5/8" IRON PIN AS SHOWN ON SURVEY NO. 00-135-C MARKING THE CENTER OF WARD STREET AT THE NORTH LINE OF RAILROAD ADDITION.  
N: 837440.46  
E: 8737230.10

FOUND RAILROAD SPIKE WITH PUNCH AT THE INTERSECTION OF N.E. 9TH AND ROBBINS.  
N: 837440.46  
E: 8737230.10

FOUND RAILROAD SPIKE WITH PUNCH AT THE INTERSECTION OF N.E. 9TH AND ROBBINS.  
N: 837447.12  
E: 8737501.46

FOUND A 2 1/2" BRASS CAP IN AN ODOT MONUMENT CASE AT THE INTERSECTION OF N. MAIN AND 9TH.  
N: 836887.83  
E: 8737231.26

FOUND 5/8" IRON PINS AT 7TH & ROBBINS AND 7TH & WARD POSSIBLY PER SURVEY BY JOHN KIMBRELL ON FILE IN THE RECORDS OF THE MILTON-FREEWATER CITY ENGINEER.  
N: 836895.86  
E: 8737502.44

FOUND A 2 1/2" BRASS CAP SET BY THOMPSON IN 1984 FOR THE CORNER COMMON TO SECTIONS 1, 2, 35 & 36. THERE ARE INDICATIONS ON SURVEY RECORDS PRIOR TO 1950 WHICH ARE SUPPORTED BY SOME OCCUPATIONAL EVIDENCE THAT AN ALTERNATE POSITION MAY BE LOCATED 13.75' SOUTH OF ITS CURRENT LOCATION.  
N: 838538.48  
E: 8738154.27  
ELEV: 981

FOUND 5/8" IRON PIN PER THE PLAT OF ORCHARD SUBDIVISION.  
N: 837843.53  
E: 8738574.68

FOUND 1" IRON PIN PER THE PLAT OF CLARK'S ADDITION.  
N: 837583.10  
E: 8738285.26

FOUND 5/8" IRON PINS PER SURVEY 0-996-A.  
N: 837359.38  
E: 8738397.56

FOUND 5/8" IRON PINS PER SURVEY 0-977-A.  
N: 837356.76  
E: 8738290.59

FOUND 1/2" IRON PIN AS SHOWN ON SURVEY NO. 0-997-A AND J-49-B, N. 1/16 BETWEEN SECTIONS 1 & 2.  
N: 837228.48  
E: 8738135.82

FOUND 1" AXLE PER SURVEY 0-977-A.  
N: 837283.84  
E: 8738397.22

2 1/2" BRASS CAP IN A MONUMENT CASE AT LAMB & 8TH, IT APPEARS THAT THIS POSITION HAS BEEN USED AS THE 1/16 CORNER FOR ROWLEY'S ADDITION AND CARY AND MILLS ADDITION.  
N: 837166.10  
E: 8735517.772

2 1/2" BRASS CAP IN AN ODOT MONUMENT CASE, NW CORNER OF THE SW 1/4 OF THE NE 1/4 OF SECTION 2. SEE THE 1903 SURVEY BY L.A. WILSON RECORDED IN THE OFFICE OF THE MILTON-FREEWATER CITY ENGINEER.  
N: 837163.55  
E: 8735517.771

N.W. CORNER OF OLINGER'S ADDITION. THE CORNER FALLS IN AN E-W FENCE LINE 2' EAST OF THE S.W. CORNER.  
N: 836899.73  
E: 8735521.33



A SURVEY LOCATED IN TOWNSHIP 5 NORTH, RANGE 35 EAST, W.M., SECTIONS 1, 2, 11, 12 AND 13 AND TOWNSHIP 6 NORTH, RANGE 35 EAST, W.M., SECTION 36. FOR: THE UMATILLA COUNTY SURVEYOR, P.O. BOX 1126, PENDLETON, OREGON 97801

SCALE  
HOR. VERT. 1" = 200'

DATE  
SEPTEMBER 2004

TOMKINS LAND SURVEYING, INC.  
5 N. COLVILLE WALLA WALLA, WA 99362  
115 W. HERMISTON AV. #140 HERMISTON, OR. 97838  
(509) 522-4843 (541)564-4448

DRAWING NUMBER  
MFMONSCE.DWG  
SHEET 1 OF 7

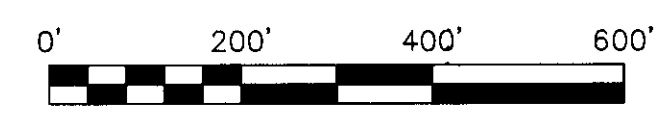
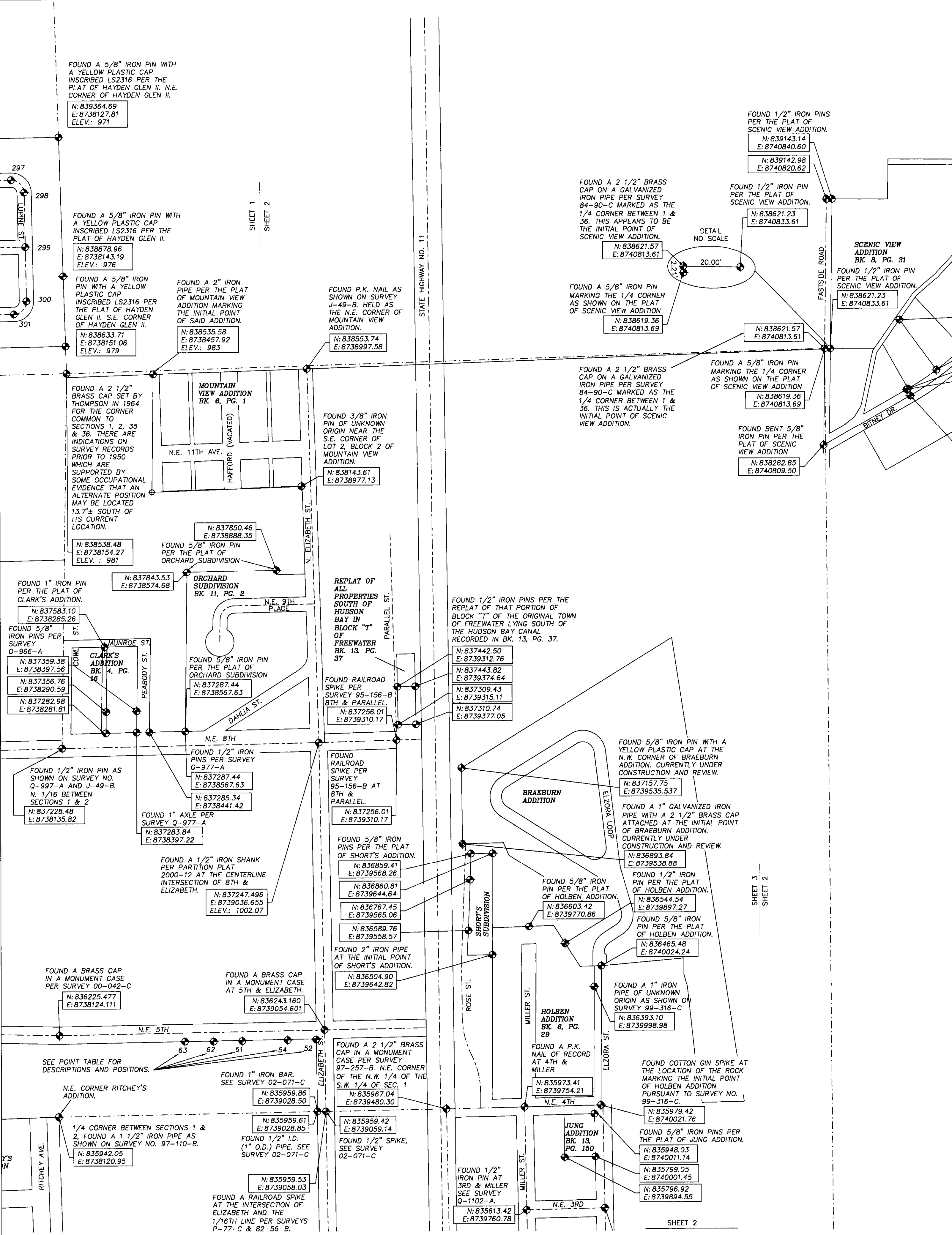
RECEIVED BY  
Umatilla County Surveyor  
Date: 1-05  
Rec'd by: KK  
No. 05-014-9  
REGISTERED PROFESSIONAL LAND SURVEYOR  
Steve Fisher  
JUN 23 1997  
OREGON SURVEYORS AND ENGINEERS  
No. 131105  
9/15/04

**BASIS OF BEARINGS**  
 1983-91 OREGON STATE PLANE  
 COORDINATE SYSTEM NORTH ZONE  
 BEARINGS.

**LEGEND**

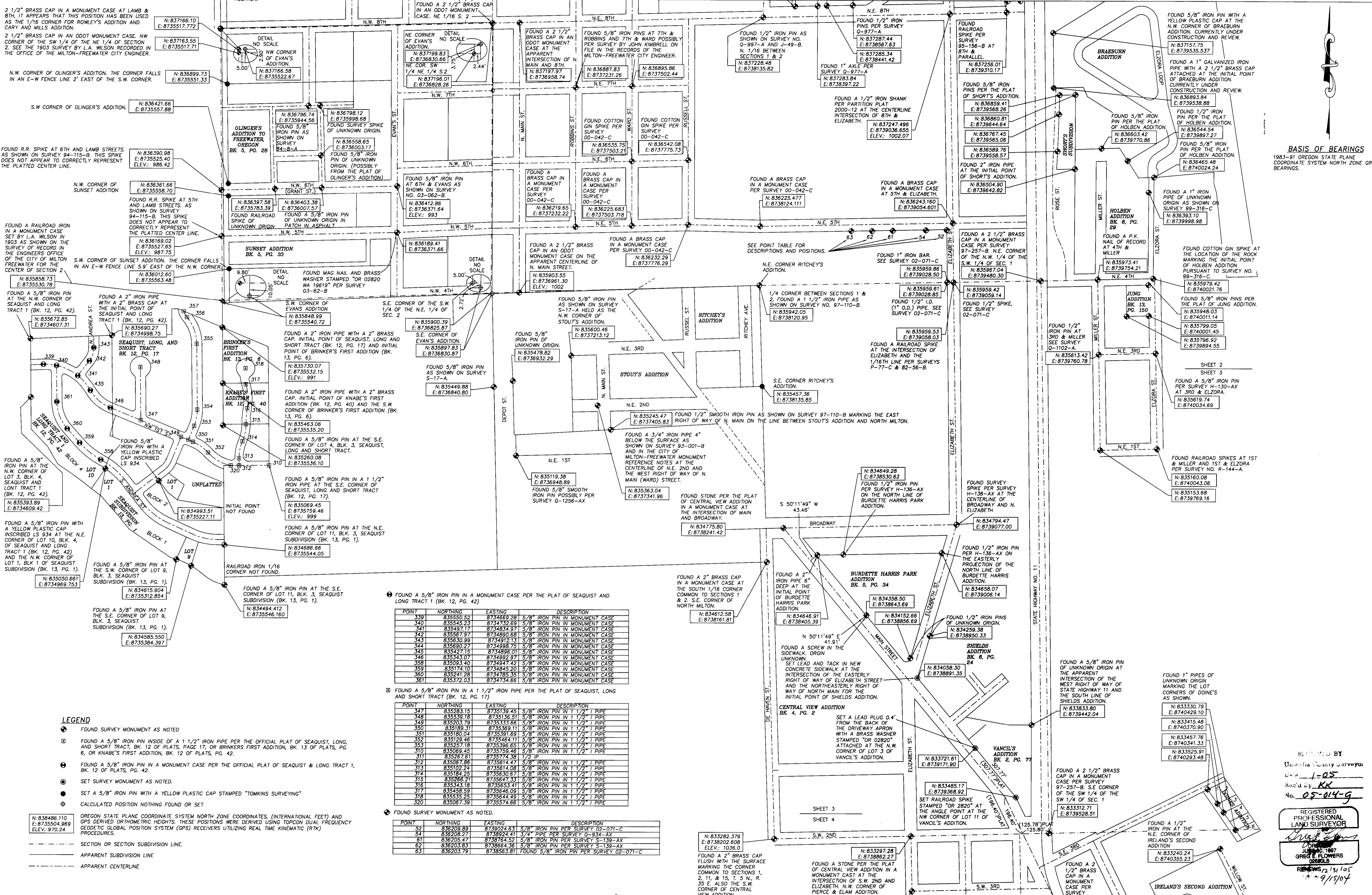
- ◆ FOUND SURVEY MONUMENT AS NOTED
  - FOUND A 5/8" IRON PIN INSIDE OF A 1 1/2" IRON PIPE PER THE OFFICIAL PLAT OF SEAQUIST, LONG, AND SHORT TRACT, BK. 12 OF PLATS, PAGE 17, OR BRINKERS FIRST ADDITION, BK. 13 OF PLATS, PG. 6, OR KNABE'S FIRST ADDITION, BK. 12 OF PLATS, PG. 42.
  - FOUND A 5/8" IRON PIN IN A MONUMENT CASE PER THE OFFICIAL PLAT OF SEAQUIST & LONG TRACT 1, BK. 12 OF PLATS, PG. 42.
  - SET SURVEY MONUMENT AS NOTED.
  - SET A 5/8" IRON PIN WITH A YELLOW PLASTIC CAP STAMPED "TOMKINS SURVEYING"
  - ⊕ CALCULATED POSITION NOTHING FOUND OR SET
- N: 838486.110  
 E: 8735504.969  
 ELEV.: 970.24
- SECTION OR SECTION SUBDIVISION LINE.
  - APPARENT SUBDIVISION LINE
  - APPARENT CENTERLINE

**NOTES:**  
 1. STREET, BLOCK AND RIGHT OF WAY LINES ARE SHOWN FOR GRAPHICAL PURPOSES ONLY AND MAY NOT BE TRULY REPRESENTATIVE OF THEIR ACTUAL LOCATION.



REGISTERED  
 PROFESSIONAL  
 LAND SURVEYOR  
 Tomkins  
 JUNE 30, 1997  
 OREGON  
 No. 05-04-g

A SURVEY LOCATED IN TOWNSHIP 5 NORTH, RANGE 35 EAST, W.M., SECTIONS 1, 2, 11, 12 AND 13 AND TOWNSHIP 6 NORTH, RANGE 35 EAST, W.M., SECTION 36. FOR: THE UMATILLA COUNTY SURVEYOR, P.O. BOX 1126, PENDLETON, OREGON 97801		SCALE HOR. VERT. 1" = 200'	DATE SEPTEMBER 2004	TOMKINS LAND SURVEYING, INC. 5 N. COLVILLE WALLA WALLA, WA. 99362 115 W. HERMISTON AV. #140 HERMISTON, OR. 97838 (509) 522-4843 (541)564-4448	DRAWING NUMBER MFMONSCS.DWG SHEET 2 OF 7
--	--	-------------------------------	------------------------	--	--



2 1/2" BRASS CAP IN A MONUMENT CASE AT LAMB & 8TH. IT APPEARS THAT THIS POSITION HAS BEEN USED AS THE 1/16 CORNER FOR ROWLEY'S ADDITION AND CARY AND MILLS ADDITION.

2 1/2" BRASS CAP IN AN ODOT MONUMENT CASE. NW CORNER OF THE SW 1/4 OF THE NE 1/4 OF SECTION 2. SEE THE 1903 SURVEY BY L.A. WILSON RECORDED IN THE OFFICE OF THE MILTON-FREEWATER CITY ENGINEER.

N.W. CORNER OF OLINGER'S ADDITION. THE CORNER FALLS IN AN E-W FENCE LINE 2' EAST OF THE S.W. CORNER.

FOUND R.R. SPIKE AT 8TH AND LAMB STREETS. AS SHOWN ON SURVEY 94-115-B. THIS SPIKE DOES NOT APPEAR TO CORRECTLY REPRESENT THE PLATTED CENTER LINE.

FOUND R.R. SPIKE AT 5TH AND LAMB STREETS. AS SHOWN ON SURVEY 94-115-B. THIS SPIKE DOES NOT APPEAR TO CORRECTLY REPRESENT THE PLATTED CENTER LINE.

FOUND A RAILROAD IRON IN A MONUMENT CASE SET BY L.A. WILSON IN 1903 AS SHOWN ON THE SURVEY OF RECORD IN THE ENGINEERS OFFICE OF THE CITY OF MILTON-FREEWATER FOR THE CENTER OF SECTION 2.

FOUND A 5/8" IRON PIN AT THE N.W. CORNER OF SEASQUIST AND LONG TRACT 1 (BK. 12, PG. 42).

FOUND A 5/8" IRON PIN AT THE N.W. CORNER OF LOT 3, BLK. 4, SEASQUIST AND LONG TRACT 1 (BK. 12, PG. 42).

FOUND A 5/8" IRON PIN WITH A YELLOW PLASTIC CAP INSCRIBED LS 934 AT THE N.E. CORNER OF LOT 10, BLK. 4, OF SEASQUIST AND LONG TRACT 1 (BK. 12, PG. 42) AND THE N.W. CORNER OF LOT 1, BLK. 1 OF SEASQUIST SUBDIVISION (BK. 13, PG. 1).

FOUND A 5/8" IRON PIN AT THE S.W. CORNER OF LOT 9, BLK. 3, SEASQUIST SUBDIVISION (BK. 13, PG. 1).

FOUND A 5/8" IRON PIN AT THE S.E. CORNER OF LOT 9, BLK. 3, SEASQUIST SUBDIVISION (BK. 13, PG. 1).

FOUND A 5/8" IRON PIN AT THE S.E. CORNER OF LOT 11, BLK. 3, SEASQUIST SUBDIVISION (BK. 13, PG. 1).

FOUND A 5/8" IRON PIN AT THE S.E. CORNER OF LOT 9, BLK. 3, SEASQUIST SUBDIVISION (BK. 13, PG. 1).

FOUND A 5/8" IRON PIN AT THE S.E. CORNER OF LOT 9, BLK. 3, SEASQUIST SUBDIVISION (BK. 13, PG. 1).

FOUND A 5/8" IRON PIN AT THE S.E. CORNER OF LOT 9, BLK. 3, SEASQUIST SUBDIVISION (BK. 13, PG. 1).

FOUND A 5/8" IRON PIN AT THE S.E. CORNER OF LOT 9, BLK. 3, SEASQUIST SUBDIVISION (BK. 13, PG. 1).

FOUND A 5/8" IRON PIN AT THE S.E. CORNER OF LOT 9, BLK. 3, SEASQUIST SUBDIVISION (BK. 13, PG. 1).

FOUND A 5/8" IRON PIN AT THE S.E. CORNER OF LOT 9, BLK. 3, SEASQUIST SUBDIVISION (BK. 13, PG. 1).

FOUND A 5/8" IRON PIN AT THE S.E. CORNER OF LOT 9, BLK. 3, SEASQUIST SUBDIVISION (BK. 13, PG. 1).

FOUND A 5/8" IRON PIN AT THE S.E. CORNER OF LOT 9, BLK. 3, SEASQUIST SUBDIVISION (BK. 13, PG. 1).

FOUND A 5/8" IRON PIN AT THE S.E. CORNER OF LOT 9, BLK. 3, SEASQUIST SUBDIVISION (BK. 13, PG. 1).

FOUND A 5/8" IRON PIN AT THE S.E. CORNER OF LOT 9, BLK. 3, SEASQUIST SUBDIVISION (BK. 13, PG. 1).

FOUND A 5/8" IRON PIN AT THE S.E. CORNER OF LOT 9, BLK. 3, SEASQUIST SUBDIVISION (BK. 13, PG. 1).

FOUND A 5/8" IRON PIN AT THE S.E. CORNER OF LOT 9, BLK. 3, SEASQUIST SUBDIVISION (BK. 13, PG. 1).

FOUND A 5/8" IRON PIN AT THE S.E. CORNER OF LOT 9, BLK. 3, SEASQUIST SUBDIVISION (BK. 13, PG. 1).

FOUND A 5/8" IRON PIN AT THE S.E. CORNER OF LOT 9, BLK. 3, SEASQUIST SUBDIVISION (BK. 13, PG. 1).

FOUND A 5/8" IRON PIN AT THE S.E. CORNER OF LOT 9, BLK. 3, SEASQUIST SUBDIVISION (BK. 13, PG. 1).

FOUND A 5/8" IRON PIN AT THE S.E. CORNER OF LOT 9, BLK. 3, SEASQUIST SUBDIVISION (BK. 13, PG. 1).

FOUND A 5/8" IRON PIN AT THE S.E. CORNER OF LOT 9, BLK. 3, SEASQUIST SUBDIVISION (BK. 13, PG. 1).

FOUND A 5/8" IRON PIN AT THE S.E. CORNER OF LOT 9, BLK. 3, SEASQUIST SUBDIVISION (BK. 13, PG. 1).

**LEGEND**

- FOUND SURVEY MONUMENT AS NOTED
- FOUND A 5/8" IRON PIN INSIDE OF A 1 1/2" IRON PIPE PER THE OFFICIAL PLAT OF SEASQUIST, LONG, AND SHORT TRACT, BK. 12 OF PLATS, PAGE 17, OR BRINKER'S FIRST ADDITION, BK. 13 OF PLATS, PG. 6, OR KNABE'S FIRST ADDITION, BK. 12 OF PLATS, PG. 42.
- FOUND A 5/8" IRON PIN IN A MONUMENT CASE PER THE OFFICIAL PLAT OF SEASQUIST & LONG TRACT 1, BK. 12 OF PLATS, PG. 42.
- SET SURVEY MONUMENT AS NOTED.
- SET A 5/8" IRON PIN WITH A YELLOW PLASTIC CAP STAMPED "TOMKINS SURVEYING"
- CALCULATED POSITION NOTHING FOUND OR SET

OREGON STATE PLANE COORDINATE SYSTEM NORTH ZONE COORDINATES, (INTERNATIONAL FEET) AND GPS DERIVED ORTHOMETRIC HEIGHTS. THESE POSITIONS WERE DERIVED USING TOPCON DUAL FREQUENCY GEODETIC GLOBAL POSITION SYSTEM (GPS) RECEIVERS UTILIZING REAL TIME KINEMATIC (RTK) PROCEDURES.

SECTION OR SECTION SUBDIVISION LINE

APPARENT SUBDIVISION LINE

APPARENT CENTERLINE

POINT	NORTHING	EASTING	DESCRIPTION
339	835550.52	8734869.28	5/8" IRON PIN IN MONUMENT CASE PER SURVEY Q-977-A
340	835545.23	8734732.59	5/8" IRON PIN IN MONUMENT CASE PER SURVEY Q-977-A
341	835497.17	8734834.97	5/8" IRON PIN IN MONUMENT CASE PER SURVEY Q-977-A
342	835567.97	8734890.68	5/8" IRON PIN IN MONUMENT CASE PER SURVEY Q-977-A
343	835630.99	8734972.13	5/8" IRON PIN IN MONUMENT CASE PER SURVEY Q-977-A
344	835690.27	8734998.75	5/8" IRON PIN IN MONUMENT CASE PER SURVEY Q-977-A
345	835427.15	8734896.01	5/8" IRON PIN IN MONUMENT CASE PER SURVEY Q-977-A
346	835343.07	8734992.97	5/8" IRON PIN IN MONUMENT CASE PER SURVEY Q-977-A
347	835093.40	8734947.42	5/8" IRON PIN IN MONUMENT CASE PER SURVEY Q-977-A
348	835174.10	8734845.20	5/8" IRON PIN IN MONUMENT CASE PER SURVEY Q-977-A
349	835241.28	8734785.35	5/8" IRON PIN IN MONUMENT CASE PER SURVEY Q-977-A
350	835372.03	8734734.66	5/8" IRON PIN IN MONUMENT CASE PER SURVEY Q-977-A
351	835283.15	8735139.45	5/8" IRON PIN IN 1 1/2" I PIPE
347	835539.18	8735136.51	5/8" IRON PIN IN 1 1/2" I PIPE
348	835203.79	8735333.66	5/8" IRON PIN IN 1 1/2" I PIPE
349	835189.31	8735369.11	5/8" IRON PIN IN 1 1/2" I PIPE
351	835180.04	8735391.89	5/8" IRON PIN IN 1 1/2" I PIPE
352	835129.46	8735464.11	5/8" IRON PIN IN 1 1/2" I PIPE
353	835257.18	8735396.65	5/8" IRON PIN IN 1 1/2" I PIPE
354	835269.45	8735759.46	5/8" IRON PIN IN 1 1/2" I PIPE
351	835267.61	8735774.38	1/2" IP
312	835067.86	8735614.47	5/8" IRON PIN IN 1 1/2" I PIPE
313	835102.24	8735614.08	5/8" IRON PIN IN 1 1/2" I PIPE
314	835184.25	8735630.67	5/8" IRON PIN IN 1 1/2" I PIPE
315	835286.21	8735647.33	5/8" IRON PIN IN 1 1/2" I PIPE
316	835343.18	8735653.41	5/8" IRON PIN IN 1 1/2" I PIPE
317	835458.59	8735646.09	5/8" IRON PIN IN 1 1/2" I PIPE
318	835535.28	8735644.49	5/8" IRON PIN IN 1 1/2" I PIPE
320	835067.59	8735574.66	5/8" IRON PIN IN 1 1/2" I PIPE
52	836209.89	8739024.63	5/8" IRON PIN PER SURVEY 02-071-C
54	836208.21	8738924.41	5/8" IRON PIN PER SURVEY 02-071-C
61	836205.47	8738764.52	5/8" IRON PIN PER SURVEY S-139-AX
62	836203.83	8738664.36	5/8" IRON PIN PER SURVEY S-139-AX
63	836203.79	8738563.81	FOUND 5/8" IRON PIN PER SURVEY 02-071-C

A SURVEY LOCATED IN TOWNSHIP 5 NORTH, RANGE 35 EAST, W.M., SECTIONS 1, 2, 11, 12 AND 13 AND TOWNSHIP 6 NORTH, RANGE 35 EAST, W.M. SECTION 36. FOR: THE UMATILLA COUNTY SURVEYOR, P.O. BOX 1126, PENDLETON, OREGON 97801

SCALE 1" = 200'

DATE SEPTEMBER 2004

TOMKINS LAND SURVEYING, INC.  
5 N. COLVILLE WALLA WALLA, WA. 99362  
115 W. HERMISTON AV. #140 HERMISTON, OR. 97838  
(509) 622-4843 (541)564-4448

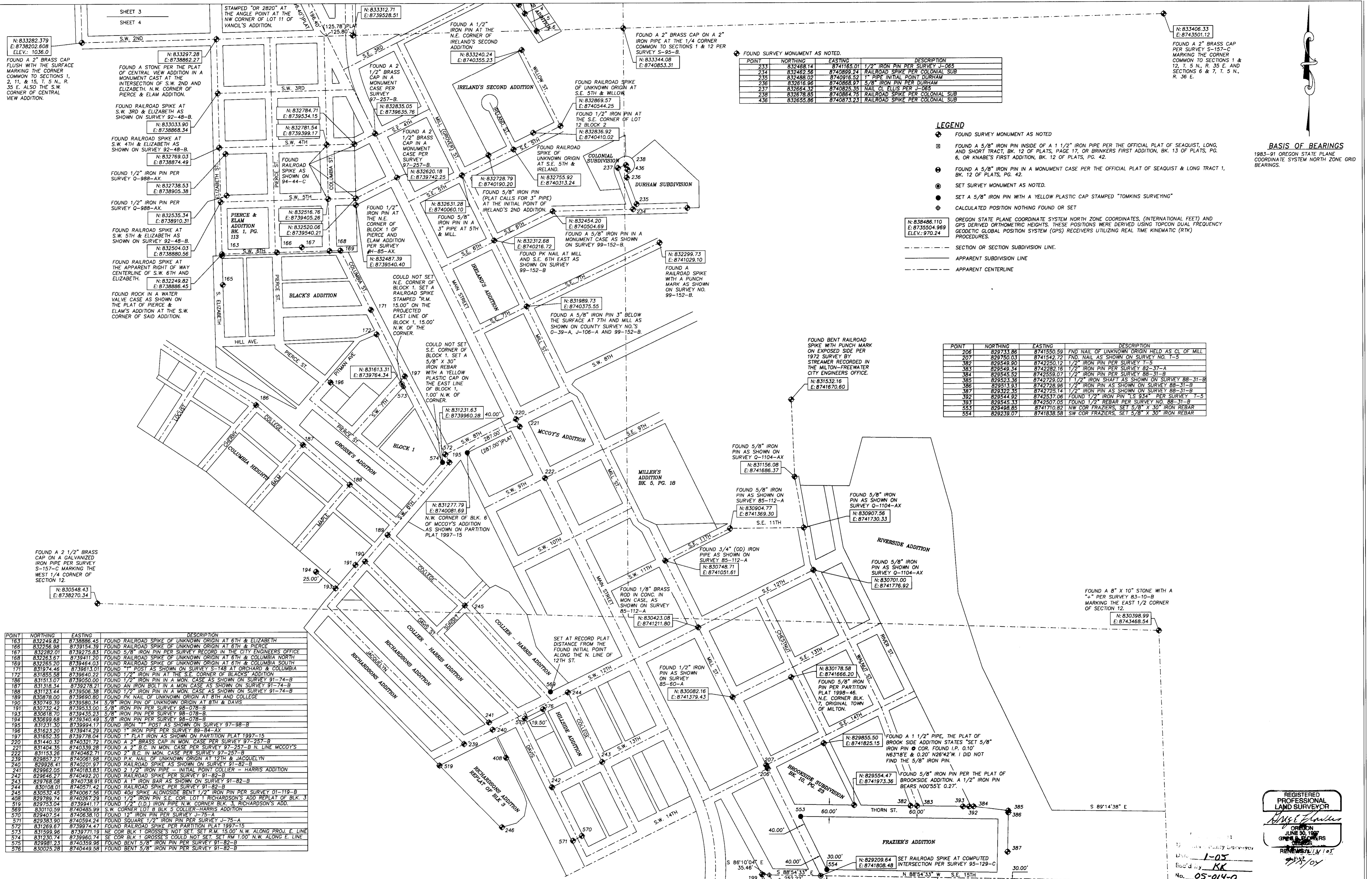
DRAWING NUMBER MFMONSCE.DWG

SHEET 3 OF 7

REMOVED BY  
Umatilla County Surveyor  
Date 1-05  
Red'd by KK  
No. 05-014-9

REGISTERED PROFESSIONAL LAND SURVEYOR  
JAMES W. TOMKINS  
JULY 20, 1987  
GREG FLOWERS  
08/03/05  
RENEWED 12/31/05  
9/15/04

1983-91 OREGON STATE PLANE COORDINATE SYSTEM NORTH ZONE GRID BEARINGS.



POINT	NORTHING	EASTING	DESCRIPTION
153	832249.82	8738886.45	FOUND RAILROAD SPIKE OF UNKNOWN ORIGIN AT 6TH & ELIZABETH
166	832256.98	8739154.39	FOUND RAILROAD SPIKE OF UNKNOWN ORIGIN AT 6TH & PIERCE
167	832282.01	8739275.83	FOUND 5/8" IRON PIN PER SURVEY RECORD IN THE CITY ENGINEERS OFFICE
168	832283.87	8739411.20	FOUND RAILROAD SPIKE OF UNKNOWN ORIGIN AT 6TH & COLUMBIA NORTH
169	832285.20	8739464.03	FOUND RAILROAD SPIKE OF UNKNOWN ORIGIN AT 6TH & COLUMBIA SOUTH
171	831974.46	8739613.01	FOUND "T" POST AS SHOWN ON SURVEY S-14B AT ORCHARD & COLUMBIA
172	831855.58	8739640.22	FOUND 1/2" IRON PIN AT THE S.E. CORNER OF BLACKS' ADDITION
186	831613.07	8739590.00	FOUND 1/2" IRON PIN IN A MON. CASE AS SHOWN ON SURVEY 91-74-B
187	831318.34	8739278.21	FOUND AN IRON BOLT IN A MON. CASE AS SHOWN ON SURVEY 91-74-B
188	831123.44	8739506.38	FOUND 1/2" IRON PIN IN A MON. CASE AS SHOWN ON SURVEY 91-74-B
189	830878.00	8739690.80	FOUND PK NAIL OF UNKNOWN ORIGIN AT 8TH AND COLLEGE
190	830749.39	8739580.34	5/8" IRON PIN OF UNKNOWN ORIGIN AT 8TH & DAVIS
191	830732.42	8739533.00	5/8" IRON PIN PER SURVEY 98-07B-B
193	830678.70	8739435.23	5/8" IRON PIN PER SURVEY 98-07B-B
194	830699.68	8739340.49	5/8" IRON PIN PER SURVEY 98-07B-B
195	831231.07	8739894.17	FOUND "T" POST AS SHOWN ON SURVEY 97-98-B
196	831623.20	8739414.29	FOUND 1" IRON PIPE PER SURVEY 89-84-AX
197	831652.35	8739778.04	FOUND 1" FLAT IRON AS SHOWN ON PARTITION PLAT 1997-15
220	831440.32	8740321.72	FOUND A 2" BRASS CAP IN MON. CASE PER SURVEY 97-257-B
221	831404.35	8740397.28	FOUND 2" B.C. IN MON. CASE PER SURVEY 97-257-B N. LINE MCCOY'S
222	831153.26	8740462.71	FOUND 2" B.C. IN MON. CASE PER SURVEY 97-257-B
239	829857.27	8740081.98	FOUND P.K. NAIL OF UNKNOWN ORIGIN AT 12TH & JACQUELYN
240	829926.41	8740201.97	FOUND RAILROAD SPIKE AS SHOWN ON SURVEY 91-82-B
241	829962.05	8740183.83	FOUND 1 1/2" IRON PIPE - INITIAL POINT COLLIER - HARRIS ADDITION
242	829946.27	8740492.20	FOUND RAILROAD SPIKE PER SURVEY 91-82-B
243	829768.08	8740738.91	FOUND A 1" IRON BAR AS SHOWN ON SURVEY 91-82-B
244	830108.01	8740571.42	FOUND RAILROAD SPIKE PER SURVEY 91-82-B
245	830532.45	8740671.56	FOUND 40# SPIKE ALONGSIDE BENT 1 1/2" IRON PIN PER SURVEY 01-119-B
408	829789.74	8740267.29	FOUND 1 1/2" IRON PIN S.E. COR. LOT 1 RICHARDSON'S ADD REPLAT OF BLK. 3
519	829753.04	8739941.17	FOUND 1 1/2" (L.D.) IRON PIPE N.W. CORNER BLK. 3, RICHARDSON'S ADD.
569	830110.59	8740485.99	S.W. CORNER LOT 8 BLK 5 COLLIER-HARRIS ADDITION
570	829407.54	8740368.10	FOUND 1 1/2" IRON PIN PER SURVEY 97-257-B
571	829383.90	8740594.24	FOUND SQUARE 1 1/2" IRON PIN PER SURVEY J-75-A
572	831269.67	8739974.47	FOUND RAILROAD SPIKE PER PARTITION PLAT 1997-15
573	831599.96	8739771.19	NE COR BLK 1 GROSSE'S NOT SET SET R.M. 15.00' N.W. ALONG PROJ. E. LINE
574	831912.74	8739860.74	SE COR BLK 1 GROSSE'S COULD NOT SET SET R.M. 1.00' N.W. ALONG E. LINE
575	829981.23	8740359.98	FOUND BENT 5/8" IRON PIN PER SURVEY 91-82-B
576	830025.28	8740449.58	FOUND BENT 5/8" IRON PIN PER SURVEY 91-82-B

FOUND SURVEY MONUMENT AS NOTED.

POINT	NORTHING	EASTING	DESCRIPTION
233	832468.14	8741165.01	1/2" IRON PIN PER SURVEY J-065
234	832462.58	8740899.24	RAILROAD SPIKE PER COLONIAL SUB
235	832488.02	8740916.52	1" PIPE INITIAL POINT DURHAM
236	832616.96	8740888.97	5/8" IRON PIN PER DURHAM
237	832684.37	8740825.35	NAIL CL ELLIS PER J-065
238	832678.85	8740864.75	RAILROAD SPIKE PER COLONIAL SUB
436	832655.86	8740873.23	RAILROAD SPIKE PER COLONIAL SUB

**LEGEND**

- FOUND SURVEY MONUMENT AS NOTED
- FOUND A 5/8" IRON PIN INSIDE OF A 1 1/2" IRON PIPE PER THE OFFICIAL PLAT OF SEAGUIST, LONG, AND SHORT TRACT, BK. 12 OF PLATS, PAGE 17, OR BRINKERS FIRST ADDITION, BK. 13 OF PLATS, PG. 6, OR KNABE'S FIRST ADDITION, BK. 12 OF PLATS, PG. 42
- FOUND A 5/8" IRON PIN IN A MONUMENT CASE PER THE OFFICIAL PLAT OF SEAGUIST & LONG TRACT 1, BK. 12 OF PLATS, PG. 42.
- SET SURVEY MONUMENT AS NOTED.
- SET A 5/8" IRON PIN WITH A YELLOW PLASTIC CAP STAMPED "TOMKINS SURVEYING"
- CALCULATED POSITION NOTHING FOUND OR SET
- OREGON STATE PLANE COORDINATE SYSTEM NORTH ZONE COORDINATES, (INTERNATIONAL FEET) AND GPS DERIVED ORTHOMETRIC HEIGHTS. THESE POSITIONS WERE DERIVED USING TOPCON DUAL FREQUENCY GEODETIC GLOBAL POSITION SYSTEM (GPS) RECEIVERS UTILIZING REAL TIME KINEMATIC (RTK) PROCEDURES.
- SECTION OR SECTION SUBDIVISION LINE.
- APPARENT SUBDIVISION LINE
- APPARENT CENTERLINE

POINT	NORTHING	EASTING	DESCRIPTION
206	829133.86	8741550.59	FND NAIL OF UNKNOWN ORIGIN HELD AS CL OF MILL
207	829150.03	8741542.72	FND. NAIL AS SHOWN ON SURVEY NO. 1-5
382	829549.90	8742250.12	1/2" IRON PIN PER SURVEY 1-5
383	829549.34	8742282.16	1/2" IRON PIN PER SURVEY 82-37-A
384	829545.52	8742358.07	1/2" IRON PIN PER SURVEY 88-31-B
385	829523.36	8742729.02	1/2" IRON SHAFT AS SHOWN ON SURVEY 88-31-B
386	829513.93	8742728.96	1/2" IRON PIN AS SHOWN ON SURVEY 88-31-B
387	829322.35	8742725.14	1/2" IRON PIN AS SHOWN ON SURVEY 88-31-B
389	829544.92	8742331.06	FOUND 1 1/2" IRON PIN "S 33" PER SURVEY 1-5
393	829545.33	8742507.05	FOUND 1 1/2" REBAR PER SURVEY NO. 88-31-B
553	829498.85	8741710.82	NW COR FRAZIER'S, SET 5/8" X 30" IRON REBAR
554	829239.07	8741838.58	SW COR FRAZIER'S, SET 5/8" X 30" IRON REBAR

**BASIS OF BEARINGS**  
 1983-91 OREGON STATE PLANE  
 COORDINATE SYSTEM NORTH ZONE  
 BEARINGS.

REGISTERED  
 PROFESSIONAL  
 LAND SURVEYOR  
*Tomkins Land Surveying, Inc.*  
 OREGON  
 JUNE 30, 1999  
 ONE YEAR  
 RENEWAL 1/10/05  
 No. 05-014-9

A SURVEY LOCATED IN TOWNSHIP 5 NORTH, RANGE 35 EAST, W.M., SECTIONS 1, 2, 11, 12 AND 13 AND TOWNSHIP 6 NORTH, RANGE 35 EAST, W.M. SECTION 36. FOR: THE UMATILLA COUNTY SURVEYOR, P.O. BOX 1126, PENDLETON, OREGON 97801

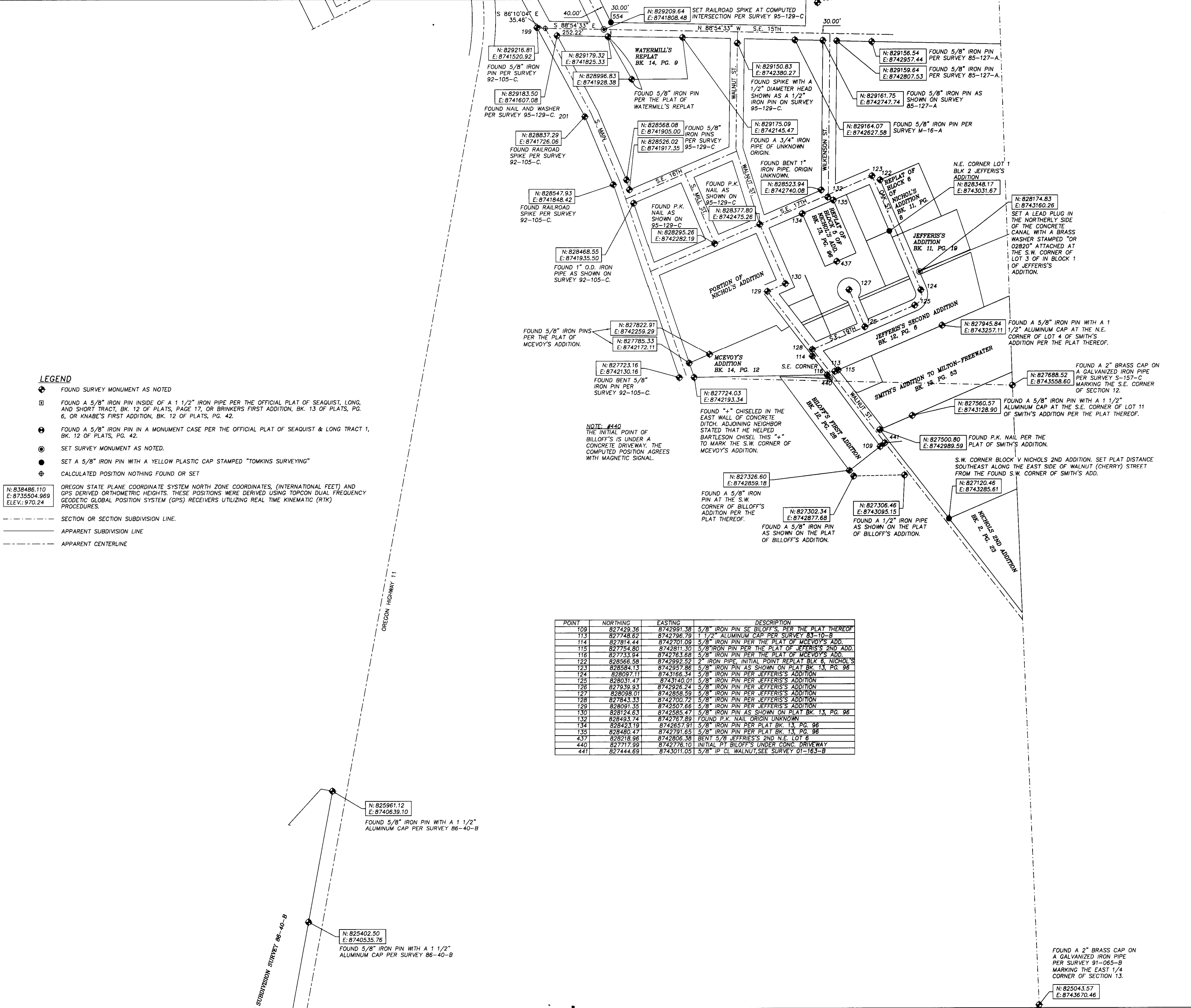
SCALE: 1" = 200'

DATE: SEPTEMBER 2004

TOMKINS LAND SURVEYING, INC.  
 5 N. COLVILLE WALLA WALLA, WA. 99362  
 115 W. HERMISTON AV. #140 HERMISTON, OR. 97838  
 (509) 522-4843 (541)584-4448

DRAWING NUMBER: MFMONSCE.DWG  
 SHEET 4 OF 7

**BASIS OF BEARINGS**  
 1983-91 OREGON STATE PLANE  
 COORDINATE SYSTEM NORTH ZONE GRID  
 BEARINGS.

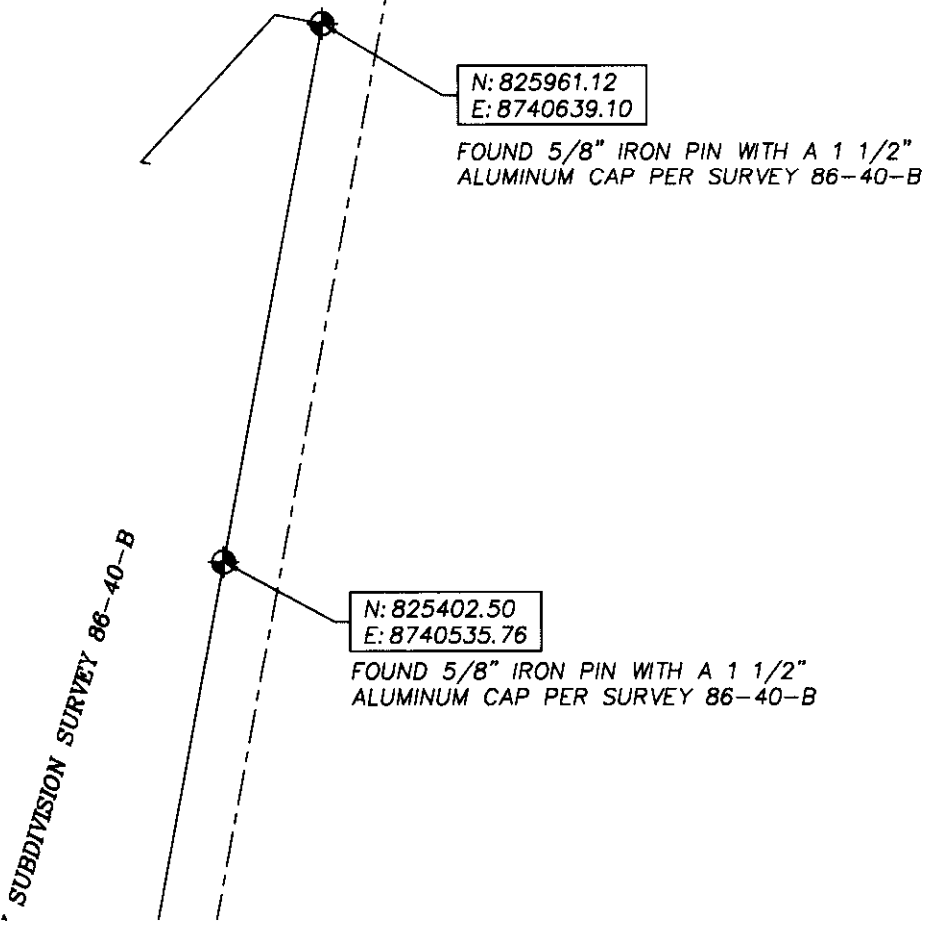


**LEGEND**

- FOUND SURVEY MONUMENT AS NOTED
  - ⊕ FOUND A 5/8" IRON PIN INSIDE OF A 1 1/2" IRON PIPE PER THE OFFICIAL PLAT OF SEAQUIST, LONG, AND SHORT TRACT, BK. 12 OF PLATS, PAGE 17, OR BRINKERS FIRST ADDITION, BK. 13 OF PLATS, PG. 6, OR KNABE'S FIRST ADDITION, BK. 12 OF PLATS, PG. 42.
  - ⊙ FOUND A 5/8" IRON PIN IN A MONUMENT CASE PER THE OFFICIAL PLAT OF SEAQUIST & LONG TRACT 1, BK. 12 OF PLATS, PG. 42.
  - SET SURVEY MONUMENT AS NOTED.
  - SET A 5/8" IRON PIN WITH A YELLOW PLASTIC CAP STAMPED "TOMKINS SURVEYING"
  - ⊕ CALCULATED POSITION NOTHING FOUND OR SET
- OREGON STATE PLANE COORDINATE SYSTEM NORTH ZONE COORDINATES, (INTERNATIONAL FEET) AND GPS DERIVED ORTHOMETRIC HEIGHTS. THESE POSITIONS WERE DERIVED USING TOPCON DUAL FREQUENCY GEODETIC GLOBAL POSITION SYSTEM (GPS) RECEIVERS UTILIZING REAL TIME KINEMATIC (RTK) PROCEDURES.
- - - - - SECTION OR SECTION SUBDIVISION LINE.
  - — — — — APPARENT SUBDIVISION LINE
  - — — — — APPARENT CENTERLINE

N: 838486.110  
 E: 8735504.969  
 ELEV.: 970.24

POINT	NORTHING	EASTING	DESCRIPTION
109	827429.36	8742991.38	5/8" IRON PIN SE BILLOFF'S, PER THE PLAT THEREOF
113	827748.62	8742796.79	1 1/2" ALUMINUM CAP PER SURVEY 83-10-B
114	827814.44	8742701.09	5/8" IRON PIN PER THE PLAT OF MCEVOY'S ADD.
115	827754.80	8742811.30	5/8" IRON PIN PER THE PLAT OF JEFFERIS'S 2ND ADD.
116	827731.94	8742763.66	5/8" IRON PIN PER THE PLAT OF MCEVOY'S ADD.
122	828566.58	8742992.52	2" IRON PIPE, INITIAL POINT REPLAT BLK 6, NICHOLS
123	828584.13	8742957.86	5/8" IRON PIN AS SHOWN ON PLAT BK. 13, PG. 96
124	828097.71	8743166.34	5/8" IRON PIN PER JEFFERIS'S ADDITION
125	828031.47	8743140.01	5/8" IRON PIN PER JEFFERIS'S ADDITION
126	827939.93	8742926.24	5/8" IRON PIN PER JEFFERIS'S ADDITION
127	828098.01	8742858.59	5/8" IRON PIN PER JEFFERIS'S ADDITION
128	827843.33	8742700.72	5/8" IRON PIN PER JEFFERIS'S ADDITION
129	828091.35	8742907.66	5/8" IRON PIN PER JEFFERIS'S ADDITION
130	828124.63	8742585.47	5/8" IRON PIN AS SHOWN ON PLAT BK. 13, PG. 96
132	828493.74	8742767.89	FOUND P.K. NAIL ORIGIN UNKNOWN
134	828423.19	8742657.91	5/8" IRON PIN PER PLAT BK. 13, PG. 96
135	828460.47	8742791.65	5/8" IRON PIN PER PLAT BK. 13, PG. 96
437	828218.96	8742806.38	BENT 5/8" JEFFERIS'S 2ND N.E. LOT 6
440	827717.99	8742776.10	INITIAL PT BILLOFF'S UNDER CONC. DRIVEWAY
441	827444.69	8743011.05	5/8" IP CL WALNUT, SEE SURVEY 01-163-B



A SURVEY LOCATED IN TOWNSHIP 5 NORTH, RANGE 35 EAST, W.M., SECTIONS 1, 2, 11, 12 AND 13 AND TOWNSHIP 6 NORTH, RANGE 35 EAST, W.M.. SECTION 36.  
 FOR: THE UMATILLA COUNTY SURVEYOR, P.O. BOX 1126, PENDLETON, OREGON 97801

SCALE	DATE
HOR. VERT. 1" = 200'	SEPTEMBER 2004

TOMKINS LAND SURVEYING, INC.  
 5 N. COLVILLE WALLA WALLA, WA. 99362  
 115 W. HERMISTON AV. #140 HERMISTON, OR. 97838  
 (509) 522-4843 (541)564-4448

DRAWING NUMBER  
 MFMONSCE.DWG  
 SHEET 5 OF 7

FOUND A 2" BRASS CAP ON A GALVANIZED IRON PIPE PER SURVEY 91-065-B MARKING THE EAST 1/4 CORNER OF SECTION 13.

RECEIVED BY  
 Umatilla County Surveyor  
 Date: 1-05  
 Received by: KK  
 No. 05-014-9

REGISTERED PROFESSIONAL LAND SURVEYOR  
 Greg E. Flowers  
 OREGON  
 JUNE 30, 1997  
 GREG E. FLOWERS  
 02820LS  
 RENEWS 12/31/10  
 9/15/04

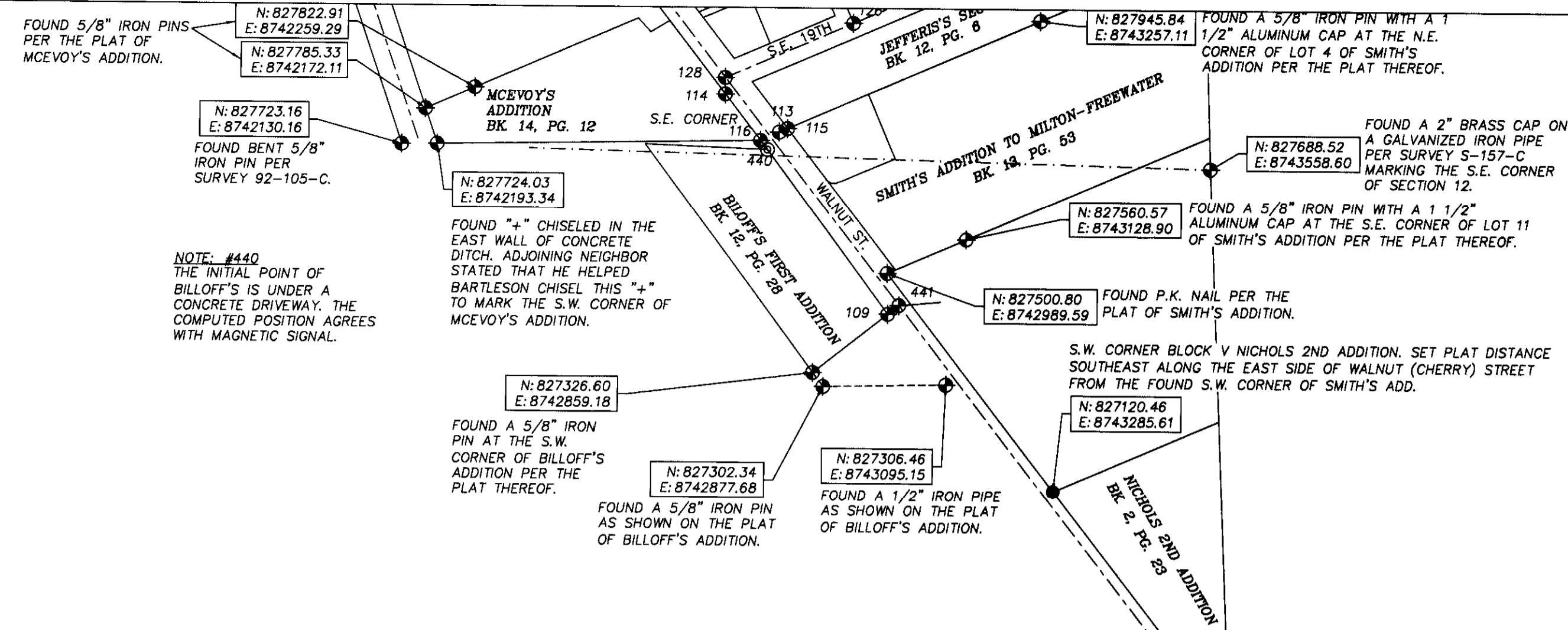
**LEGEND**

- ⊕ FOUND SURVEY MONUMENT AS NOTED
- ⊞ FOUND A 5/8" IRON PIN INSIDE OF A 1 1/2" IRON PIPE PER THE OFFICIAL PLAT OF SEAQUIST, LONG, AND SHORT TRACT, BK. 12 OF PLATS, PAGE 17, OR BRINKERS FIRST ADDITION, BK. 13 OF PLATS, PG. 6, OR KNABE'S FIRST ADDITION, BK. 12 OF PLATS, PG. 42.
- ⊙ FOUND A 5/8" IRON PIN IN A MONUMENT CASE PER THE OFFICIAL PLAT OF SEAQUIST & LONG TRACT 1, BK. 12 OF PLATS, PG. 42.
- ⊕ SET SURVEY MONUMENT AS NOTED.
- SET A 5/8" IRON PIN WITH A YELLOW PLASTIC CAP STAMPED "TOMKINS SURVEYING"
- ⊕ CALCULATED POSITION NOTHING FOUND OR SET

N: 838486.110  
E: 8735504.969  
ELEV: 970.24

OREGON STATE PLANE COORDINATE SYSTEM NORTH ZONE COORDINATES, (INTERNATIONAL FEET) AND GPS DERIVED ORTHOMETRIC HEIGHTS. THESE POSITIONS WERE DERIVED USING TOPCON DUAL FREQUENCY GEODETIC GLOBAL POSITION SYSTEM (GPS) RECEIVERS UTILIZING REAL TIME KINEMATIC (RTK) PROCEDURES.

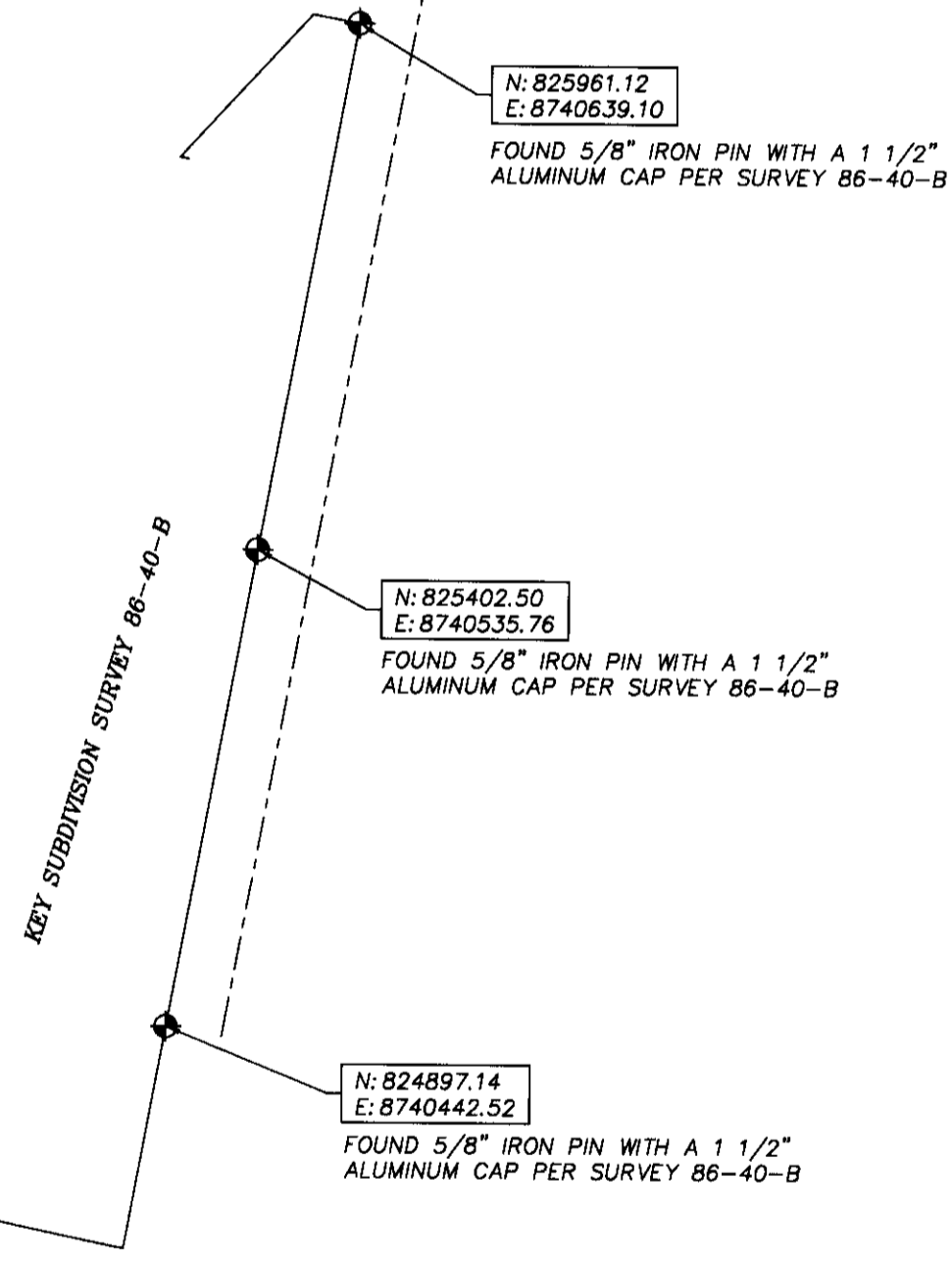
- SECTION OR SECTION SUBDIVISION LINE.
- APPARENT SUBDIVISION LINE
- APPARENT CENTERLINE



NOTE: #440  
THE INITIAL POINT OF BILLOFF'S IS UNDER A CONCRETE DRIVEWAY. THE COMPUTED POSITION AGREES WITH MAGNETIC SIGNAL.

POINT	NORTHING	EASTING	DESCRIPTION
109	827429.36	8742991.38	5/8" IRON PIN SE BILLOFF'S, PER THE PLAT THEREOF
113	827748.62	8742796.79	1 1/2" ALUMINUM CAP PER SURVEY 83-10-B
114	827814.44	8742701.09	5/8" IRON PIN PER THE PLAT OF MCEVOY'S ADD.
115	827754.80	8742811.30	5/8" IRON PIN PER THE PLAT OF JEFFERIS'S 2ND ADD.
116	827733.94	8742763.68	5/8" IRON PIN PER THE PLAT OF MCEVOY'S ADD.
123	828566.58	8742992.52	2" IRON PIPE, INITIAL POINT REPLAT BLK 6, NICHOLS
125	828564.15	8742997.85	5/8" IRON PIN AS SHOWN ON PLAT BK. 13, PG. 96
124	828097.11	8743166.34	5/8" IRON PIN PER JEFFERIS'S ADDITION
125	828031.47	8743140.01	5/8" IRON PIN PER JEFFERIS'S ADDITION
126	827935.33	8742926.24	5/8" IRON PIN PER JEFFERIS'S ADDITION
127	828058.01	8742968.59	5/8" IRON PIN PER JEFFERIS'S ADDITION
128	827843.33	8742700.72	5/8" IRON PIN PER JEFFERIS'S ADDITION
129	828091.35	8742507.66	5/8" IRON PIN PER JEFFERIS'S ADDITION
130	828124.63	8742583.47	5/8" IRON PIN AS SHOWN ON PLAT BK. 13, PG. 96
132	828493.74	8742767.89	FOUND P.K. NAIL ORIGIN UNKNOWN
134	828423.19	8742657.91	5/8" IRON PIN PER PLAT BK. 13, PG. 96
135	828480.47	8742791.65	5/8" IRON PIN PER PLAT BK. 13, PG. 96
431	828218.96	8742806.38	BENT 5/8" JEFFERIS'S 2ND N.E. LOT 8
440	827717.99	8742776.10	INITIAL PT BILLOFF'S UNDER CONC. DRIVEWAY
441	827444.69	8743011.05	5/8" IP CL WALNUT, SEE SURVEY 01-163-B

**BASIS OF BEARINGS**  
1983-91 OREGON STATE PLANE COORDINATE SYSTEM NORTH ZONE GRID BEARINGS.



FOUND A 2" BRASS CAP ON A GALVANIZED IRON PIPE PER SURVEY 91-065-B MARKING THE EAST 1/4 CORNER OF SECTION 13.

N: 825043.57  
E: 8743670.46



A SURVEY LOCATED IN TOWNSHIP 5 NORTH, RANGE 35 EAST, W.M., SECTIONS 1, 2, 11, 12 AND 13 AND TOWNSHIP 6 NORTH, RANGE 35 EAST, W.M., SECTION 36, FOR: THE UMATILLA COUNTY SURVEYOR, P.O. BOX 1126, PENDLETON, OREGON 97801

SCALE	DATE
HOR. VERT. 1" = 200'	SEPTEMBER 2004

TOMKINS LAND SURVEYING, INC.  
5 N. COLVILLE WALLA WALLA, WA 99362  
115 W. HERMISTON AV. #140 HERMISTON, OR. 97838  
(509) 522-4843 (541)564-4448

REGISTERED PROFESSIONAL LAND SURVEYOR

RECEIVED BY  
Umatilla County Surveyor  
Date: 1-05  
Quantity: KK  
No. 05-014-g

OREGON  
JUNE 30, 1997  
GREG E. FLOWERS  
02820LS  
RENEWS 12/31/05  
1/15/04

DRAWING NUMBER  
MEMONSC.DWG  
SHEET 6 OF 7