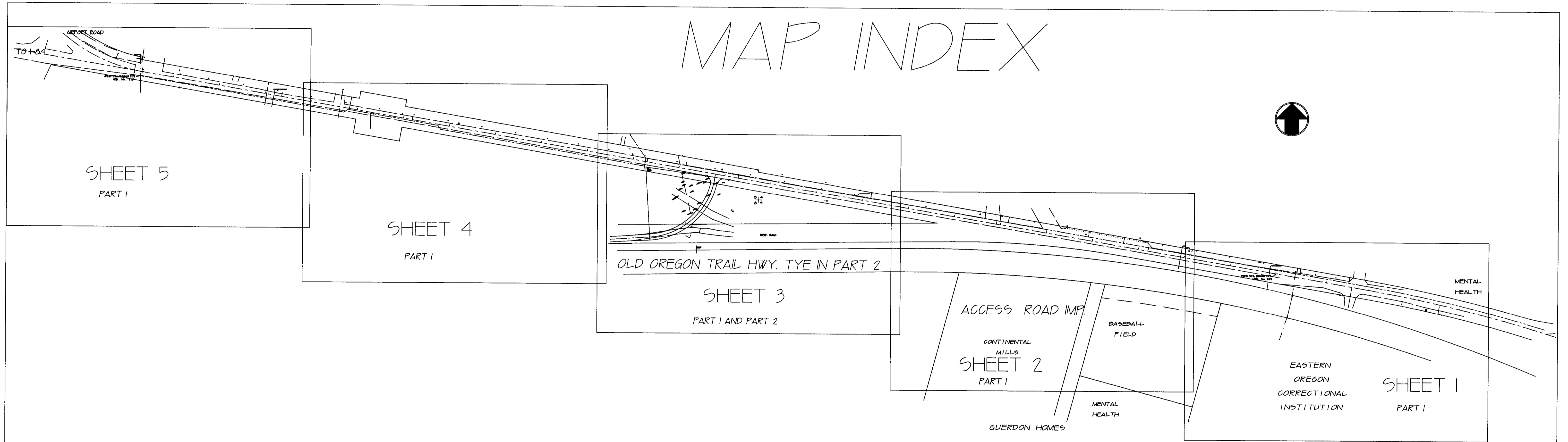


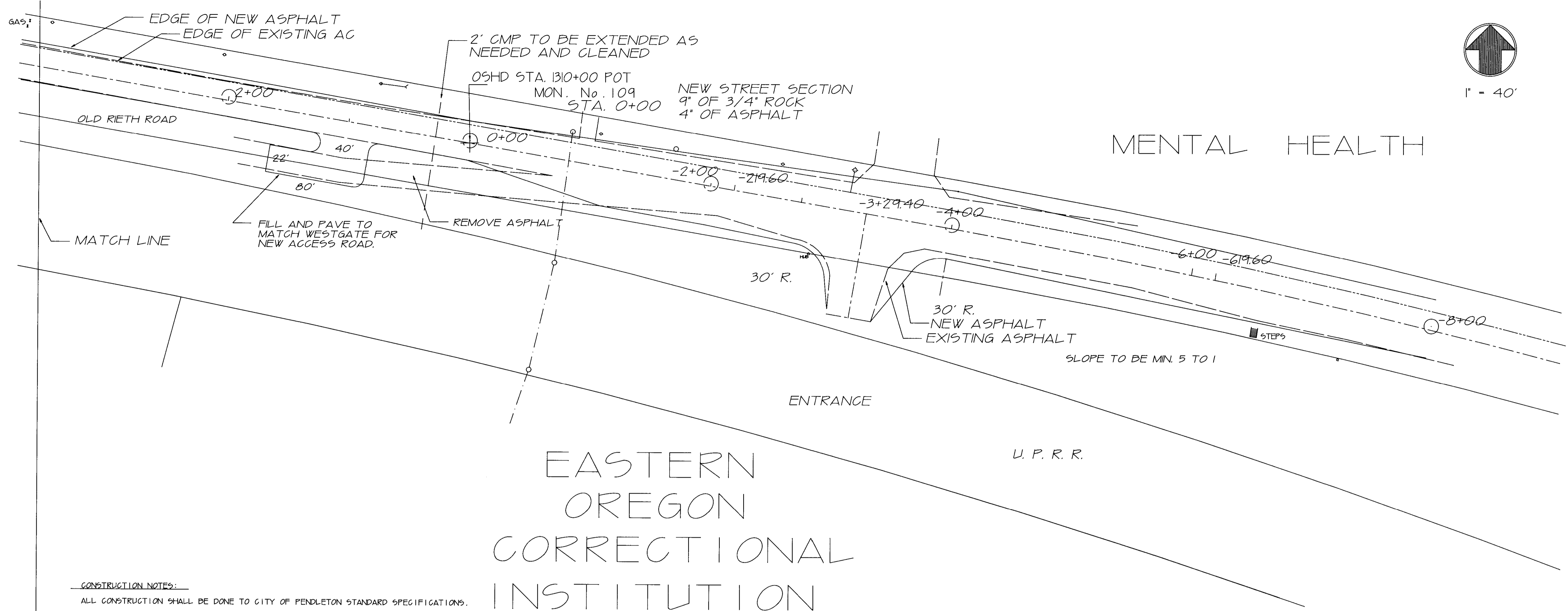
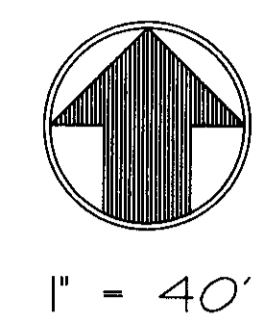
MAP INDEX



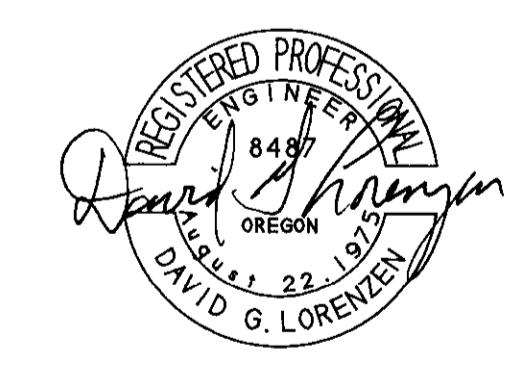
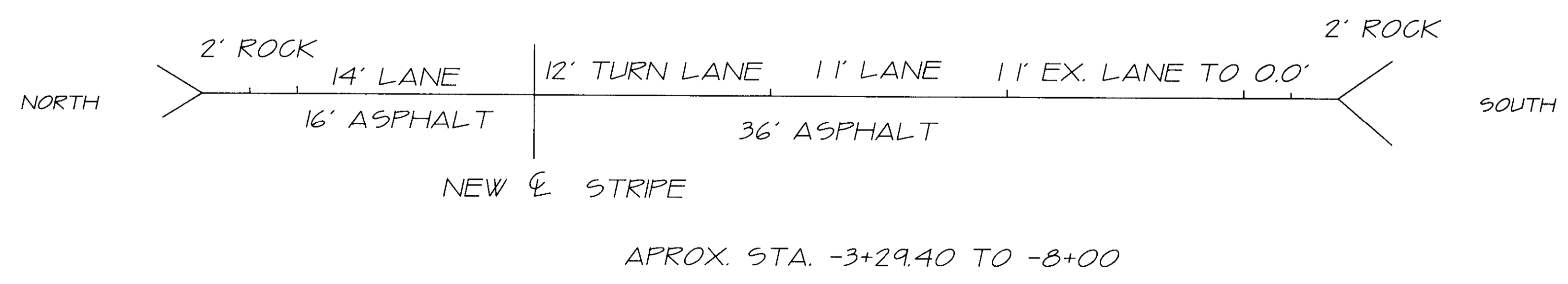
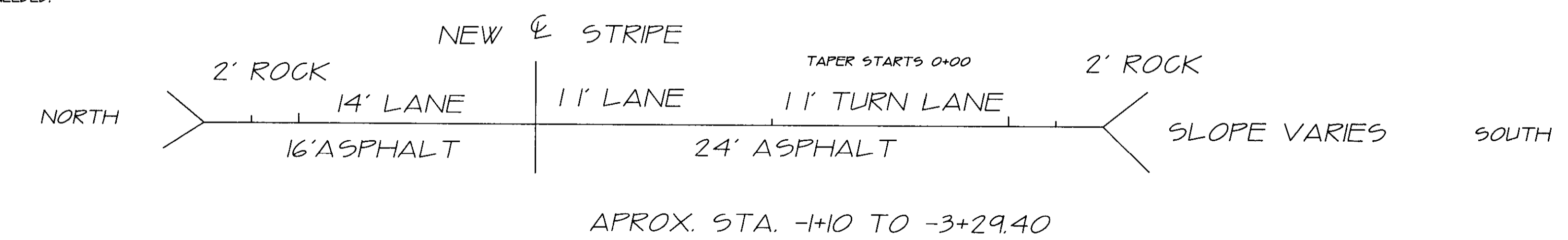
WESTGATE WIDENING SCHEDULE " B "

CITY OF PENDLETON ENGINEERING DEPARTMENT		
WESTGATE WIDENING ACCESS ROAD IMP OLD OREGON TRAIL HWY. TYE IN		
DATE: 7-3-97	SCALE: 1" = 200'	SHEET 0 OF 6
DN. BY: DUB	CKD. BY:	MAPINDEX

RECEIVED BY
Umatilla County Engineer
Date: 8-28
No. 98-175-C



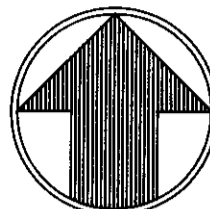
CONSTRUCTION NOTES:
 ALL CONSTRUCTION SHALL BE DONE TO CITY OF PENDLETON STANDARD SPECIFICATIONS.
 ELEVATIONS SHOWN ARE FINISH GRADE
 CONTRACTOR SHALL NOTIFY THE UTILITY LOCATE SERVICE AT 1-800-332-2344, AND ALL OTHER UTILITIES NOT PARTICIPATING IN THE ONE CALL SERVICE, 48 HOURS PRIOR TO ANY EXCAVATION.
 EXISTING ASPHALT TO REMAIN WHERE APPLICABLE
 SAW CUT EXISTING ASPHALT TO MAKE A GOOD PAVING EDGE AS NEEDED.
 ALL UTILITIES TO BE ADJUSTED TO FINISHED GRADE



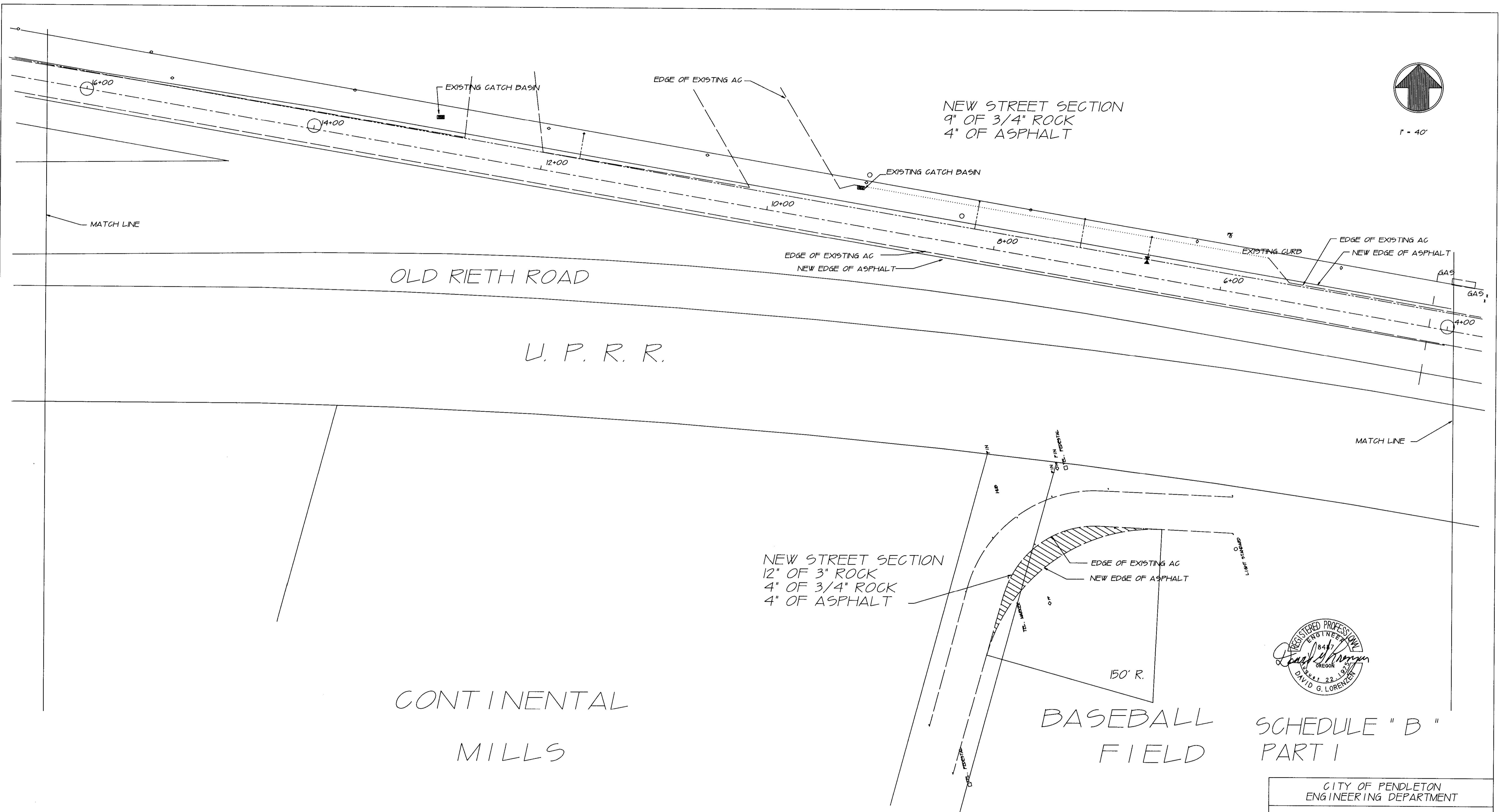
SCHEDULE " B " PART I

CITY OF PENDLETON ENGINEERING DEPARTMENT		
WESTGATE WIDENING		
DATE: 7-3-97	SCALE: 1"=40'	SHEET 1 OF 6
DN. BY: DUB	CKD. BY:	SHEET 1

RECEIVED BY
 Debbie Canyon
 Date: 8-28
 No. 98-125-C



1" = 40'



NEW STREET SECTION
9" OF 3/4" ROCK
4" OF ASPHALT

OLD RIETH ROAD

U. P. R. R.

CONTINENTAL
MILLS

NEW STREET SECTION
12" OF 3" ROCK
4" OF 3/4" ROCK
4" OF ASPHALT

BASEBALL
FIELD

ACCESS ROAD

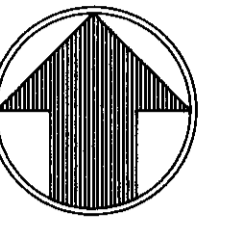
150' R.



SCHEDULE "B"
PART I

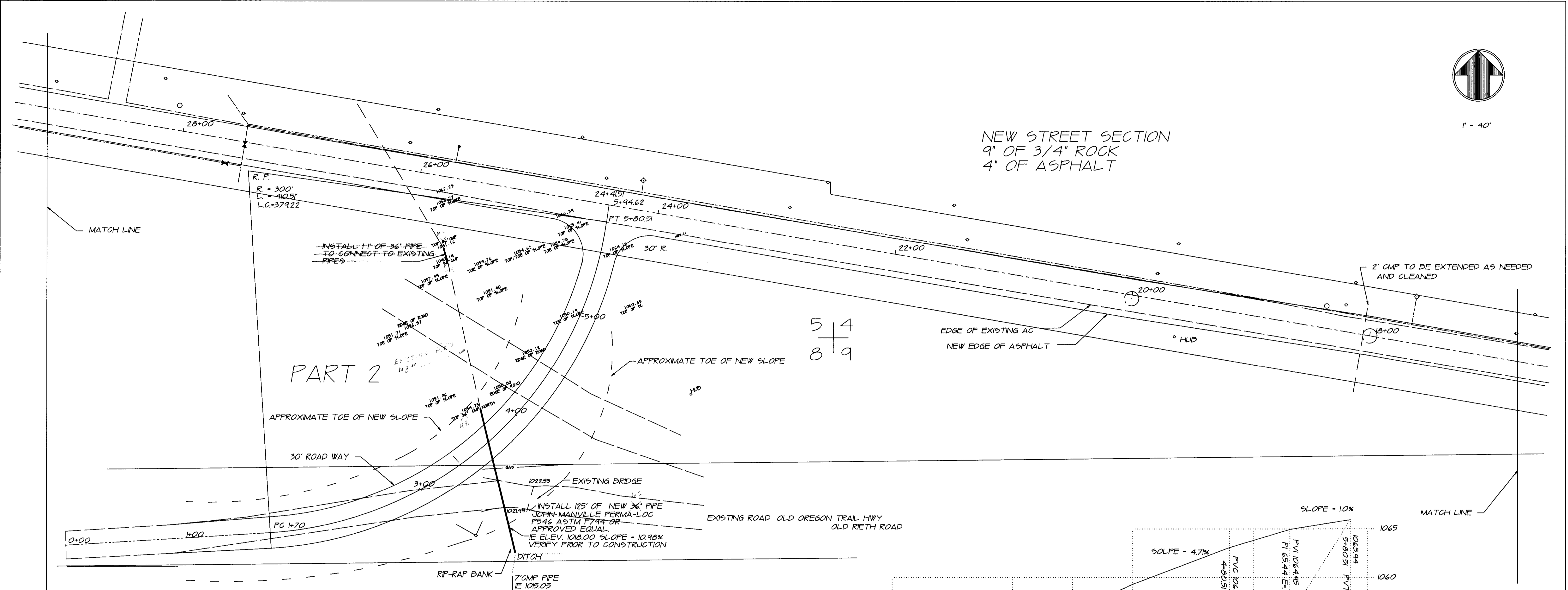
CITY OF PENDLETON ENGINEERING DEPARTMENT		
WESTGATE WIDENING AND ACCESS ROAD IMP.		
DATE: 7-3-97	SCALE: 1"=40'	SHEET 2 OF 6
DN. BY: DUB	CKD. BY:	SHEET 2

RECEIVED BY
Date: 8-98
Road No. 98-175-C



1" = 40'

NEW STREET SECTION
9" OF 3/4" ROCK
4" OF ASPHALT

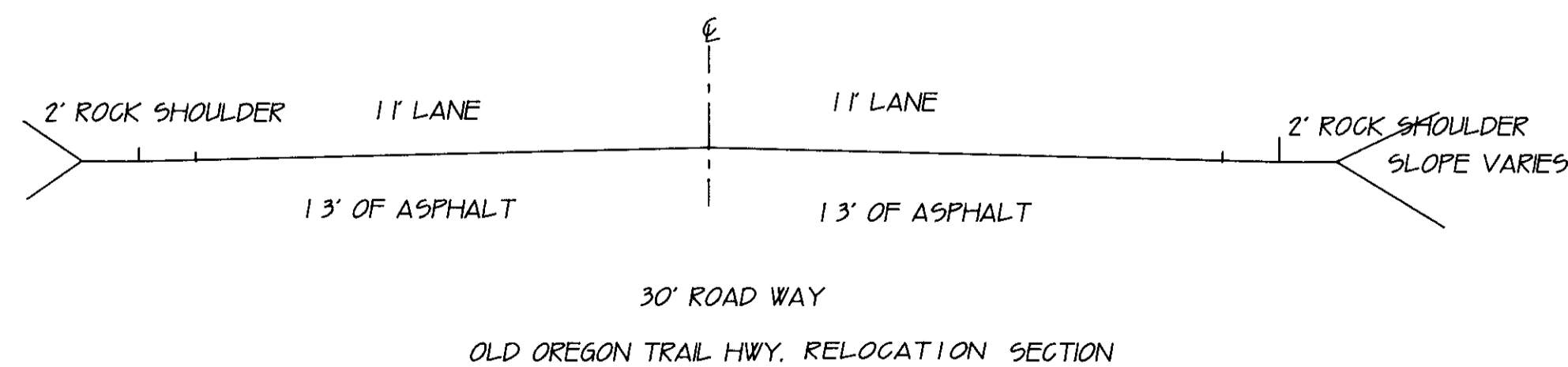


PART 2

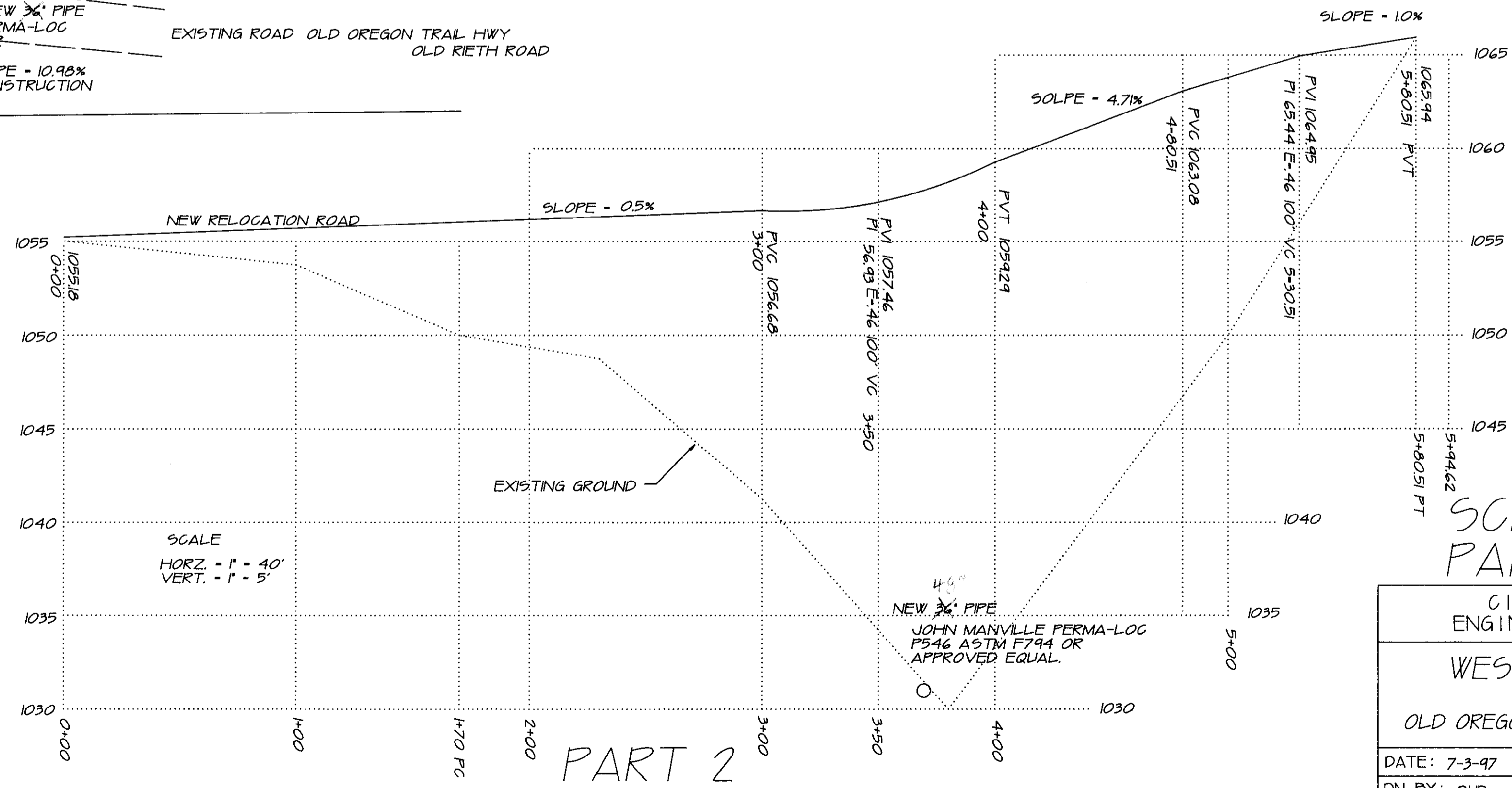
5 4
8 9

NEW ROAD SECTION
4" OF 3/4" ROCK
4" OF ASPHALT

U. P. R. R.



PART 2 N.T.S.



PART 2

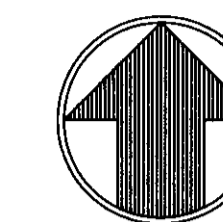


SCHEDULE "B"
PART 1 PART 2

CITY OF PENDLETON
ENGINEERING DEPARTMENT
WESTGATE WIDENING
AND
OLD OREGON TRAIL HWY. RELOCATION

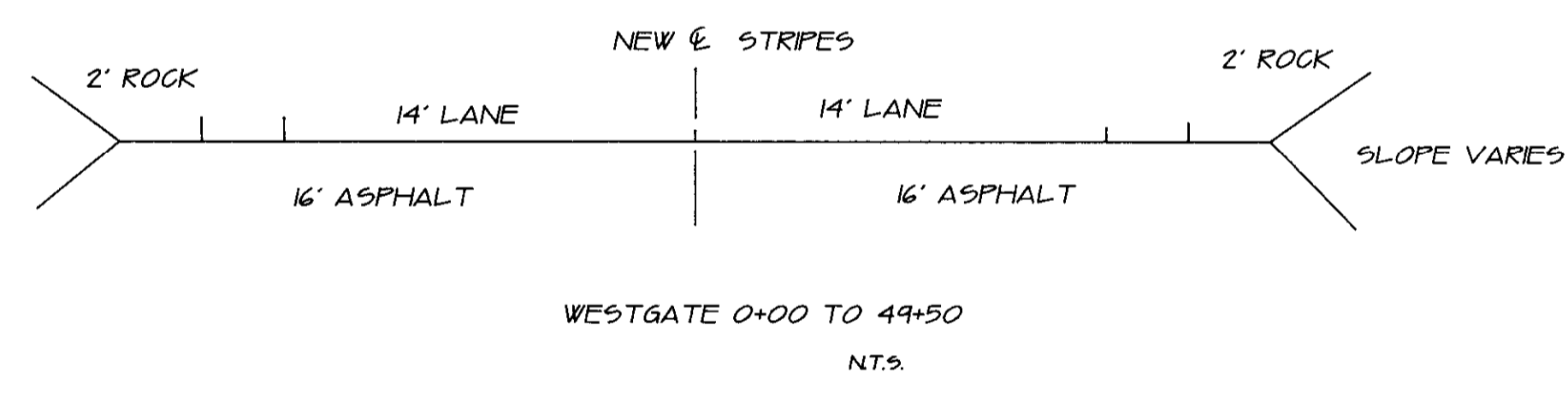
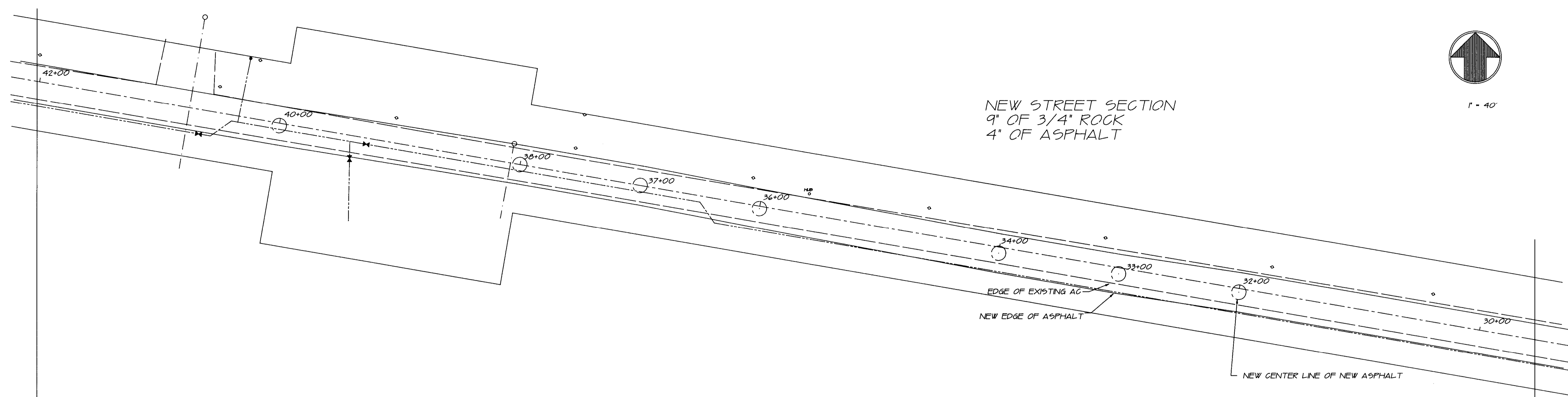
DATE: 7-3-97	SCALE: 1" = 40'	SHEET 3 OF 6
DN. BY: DUB	CKD. BY:	SHEET 3

RECEIVED BY
Douglas County Engineer
Date: 8-78
98-175-B



1" = 40'

NEW STREET SECTION
9" OF 3/4" ROCK
4" OF ASPHALT

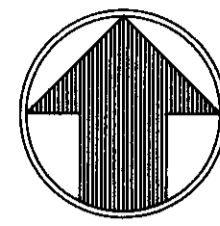


SCHEDULE " B " PART I

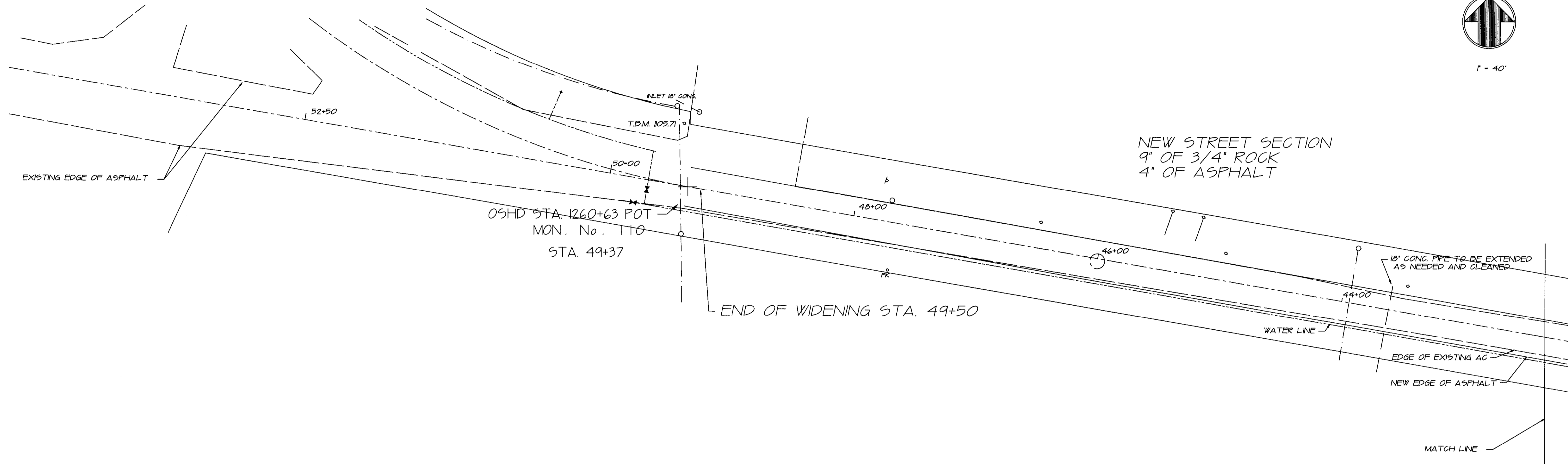
CITY OF PENDLETON
ENGINEERING DEPARTMENT
WESTGATE WIDENING

DATE: 7-3-97	SCALE: 1" = 40'	SHEET 4 OF 6
DN. BY: DUB	CKD. BY:	SHEET 4

DATE: 8-98
No. 98-175-C



1" = 40'



NEW STREET SECTION
9" OF 3/4" ROCK
4" OF ASPHALT

OSHD STA. 1260+63 POT
MON. No. 110
STA. 49+37

END OF WIDENING STA. 49+50

18" CONG. PIPE TO BE EXTENDED
AS NEEDED AND CLEANED

WATER LINE

EDGE OF EXISTING AC

NEW EDGE OF ASPHALT

MATCH LINE



SCHEDULE " B " PART I

CITY OF PENDLETON ENGINEERING DEPARTMENT		
WESTGATE WIDENING		
DATE: 7-3-97	SCALE: 1" = 40'	SHEET 5 OF 6
DN. BY: DUB	GKD. BY:	SHEET 5

REVISIONS BY
 Date: 8-98
 By: KK
 No.: 98-125-C