

RECORD OF SURVEY

SECTIONS 19 THROUGH 22 AND SECTIONS 27 THROUGH 34,
TOWNSHIP 4 NORTH, RANGE 33 EAST, T4N.,
UMATILLA COUNTY, OREGON.

NOTES:

1. LATITUDE AND LONGITUDE VALUES SHOWN ON THIS MAP AND STATE PLANE COORDINATE VALUES REPORTED ON CORNER RECORDS ARE BASED ON A GPS CONTROL TRAVERSE CONSTRAINED BY LEAST SQUARES ADJUSTMENT, HOLDING STATION "PENDLETON", (CLASS B), AND STATION "BIG HILL RESET", (CLASS A), FOR HORIZONTAL POSITION. VALUES ARE REPORTED IN NAD 83(11).

2. BASIS OF BEARINGS: GEODETIC AT THE S.W. CORNER OF SECTION 21, THETA = 40°12'59". COMBINED SCALE AND ELEVATION FACTOR FOR CONVERSION TO GRID DISTANCE = 0.99986097.

NORTHWEST CORNER SEC. 15
FOUND 1/2" BRASS CAP
ON GALV. IRON PIPE. SEE
CORNER RECORD NO. 45-42-B.
(NOT MAINTAINED).

SCALE: 1"=1000 FEET
0 500 1000 2000

SECTION 15

FOUND 1/2" BRASS CAP ON GALV.
IRON PIPE, REMONUMENTED ON
SURVEY NO. 41-D18-B. SEE
CORNER CERTIFICATE. (NOT MAINTAINED)

RECORD SURVEY REFERENCES INDICATED ON MAP

- NOTES: 1. R.P.S. INDICATES "RECORD OF PRIVATE SURVEYS".
2. RECORD DIMENSION REFERENCES ARE INDICATED IN PARENTHESIS ON THIS PLAT.
- R2 - WILLIAM H. ODELL, CONTRACT NO. 144, DATED JULY 2, 1866.
 - R3 - Z. F. MOODY, CONTRACT NO. 164 AND 165, DATED OCTOBER 4, 1871.
NOTE: THIS SURVEY IS LISTED FOR REFERENCE ONLY AND WAS SUPERCEDED BY R4.
 - R4 - JAS. P. CURRIN & JAS. E. NOLAND, UNDER SPECIAL CONTRACT, DATED MAY 4, 1887.
 - R5 - RECORD FROM R.P.S. BOOK 2 PAGE 272, BY WILLARD BRADLEY, DATED APRIL 1915, SURVEY NO. 406.
 - R6 - RECORD FROM R.P.S. BOOK 1 PAGE 63, BY J.H. RALEY, DATED JUNE 1881.
 - R7 - RECORD FROM R.P.S. BOOK 1 PAGE 56, BY J.H. RALEY, DATED MAY 26, 1881, SURVEY NO. 17.
 - R8 - RECORD R.P.S. BOOK 1, PAGES 157-160, BY GEO. ARNOLD, DATED APRIL 1887, SURVEY NO. 25.
 - R9 - SURVEY TO SUBDIVIDE SECTION 16, BY J.C. ARNOLD, DATED OCTOBER 1894, R.P.S. BOOK 1, PAGES 221-225.
 - R10 - RECORD R.P.S. BOOK 1 PAGE 264, BY J.C. ARNOLD, DATED DECEMBER 1893, SURVEY NO. 58.
 - R11 - RECORD R.P.S. BOOK 1, PAGES 505-516, BY JOHN KIMBRELL, DATED APRIL 1895, SURVEY NO. 75.
 - R12 - RECORD R.P.S. BOOK 2, PAGE 321, BY ALBURY FERRY, DATED NOVEMBER 1925, RECORD OF SURVEY NO. 459.
 - R13 - RECORD R.P.S. BOOK 2 PAGE 158, BY JOHN KIMBRELL, DATED OCTOBER 1904.
 - R14 - RECORD R.P.S. BOOK 1, PAGE 474, JOHN KIMBRELL, DATED OCTOBER 1904.
 - R15 - RECORD FROM SURVEY NO. 85-156-C.
 - R16 - RECORD FROM SURVEY NO. M12-B.
 - R17 - RECORD FROM PARTITION PLAT NO. 1495-24.

LEGEND

- - RE-ESTABLISHED CORNER AND MONUMENTED WITH A 2 1/2" BRASS CAP ON 1 1/2" X 3/4" GALVANIZED PIPE, UNLESS OTHERWISE NOTED. SEE CORNER RECORD FILED SEPARATELY.
- ⊙ - FOUND CORNER MONUMENT, AS NOTED, FROM SURVEY BY WILLARD BRADLEY, SURVEY NO. 406, APRIL, 1915. SEE CORNER RECORD FILED SEPARATELY.
- ⊕ - FOUND 2 1/2" BRASS CAP ON GALV. IRON PIPE MONUMENT, PER SURVEY NO. 85-156-C. MAINTAINED CORNER, SEE CORNER RECORD FILED SEPARATELY.
- - FOUND CORNER MONUMENT AS NOTED, MAINTAINED CORNER UNLESS OTHERWISE NOTED. SEE CORNER RECORD FILED SEPARATELY.
- - - - DIMINISHED UMATILLA INDIAN RESERVATION BOUNDARY.

HISTORY OF SURVEYS

610 SURVEYS IN THE TOWNSHIP BEGAN IN 1865 WITH THE TOWNSHIP EXTERIOR AND ENTIRE SUBDIVISION BY WILLIAM H. ODELL. IN 1871, Z.F. MOODY RESURVEYED CERTAIN SUBDIVISIONAL LINES RELATIVE TO THE BOUNDARY OF THE UMATILLA INDIAN RESERVATION IN SECTIONS 24, 30, 31, 32 & 33. BEGINNING IN 1887, JAMES P. CURRIN & JAMES E. NOLAND PERFORMED CERTAIN SURVEYS AND RESURVEYS RELATIVES TO THE DIMINISHED BOUNDARY OF THE UMATILLA INDIAN RESERVATION, AND SUBDIVIDED CERTAIN SECTIONS WITHIN THE DIMINISHED BOUNDARY. DURING THE TIME PERIOD BETWEEN THE 610 SURVEYS, AND AFTER THE 610 SURVEYS WERE COMPLETED, CERTAIN SURVEYS WERE MADE BY COUNTY SURVEYORS AS REPORTED IN "RECORD OF PRIVATE SURVEYS" BOOK 1 AND BOOK 2, ON FILE AT THE OFFICE OF THE UMATILLA COUNTY SURVEYOR. A NUMBER OF MORE RECENT, "MODERN" SURVEYS HAVE BEEN MADE IN THE TOWNSHIP AND RECORDS FOR PERTINENT PORTIONS OF THOSE SURVEYS ARE INDICATED ON THIS PLAT.

NARRATIVE OF SURVEY

THE PURPOSE OF THIS SURVEY WAS TO RECOVER, RE-ESTABLISH, REMONUMENT OR MAINTAIN CERTAIN SECTION AND ONE-QUARTER SECTION CORNERS IN SECTIONS 19 THROUGH 22 AND SECTIONS 27 THROUGH 34, TOWNSHIP 4 NORTH, RANGE 33 EAST, T4N., UMATILLA COUNTY, OREGON. THE SURVEY WORK WAS AUTHORIZED BY THE COUNTY SURVEYOR AND BOARD OF COUNTY COMMISSIONERS AND FUNDED BY THE PUBLIC LAND CORNER REMONUMENTATION FUND.

THE PROJECT AREA HAS BEEN FARMED EXTENSIVELY FOR OVER 110 YEARS AND LOCATION EVIDENCE OF MANY CORNERS HAS BEEN LOST. CURRIN AND NOLAND, DURING THEIR SURVEYS BEGINNING IN 1887, NOTED FARMING ACTIVITY AND THAT MANY PREVIOUSLY ESTABLISHED CORNERS WERE DESTROYED OR FLOODED OUT. MANY OF THE ORIGINAL CORNERS WERE MONUMENTED WITH CHARRED WOOD STAKES AND EARTH PITS. REMOVAL OF OLD FENCES AND FARMING ACROSS OLD FENCE AND FIELD LINES MADE CORNER RECOVERY DIFFICULT IN THE PROJECT AREA. PORTIONS OF THE PROJECT WERE ORIGINALLY ESTABLISHED BY WILLIAM ODELL IN 1865 AND 1866. ODELL OFTEN "STUBBED" HIS SURVEY LINES RATHER THAN RUNNING LINES AS REPORTED IN HIS FIELD NOTES AND UNFORTUNATELY, HE WAS NOT VERY GOOD AT IT. THIS RESULTS IN SOME IRREGULAR SECTION LINES IN THE PROJECT AREA.

THE SURVEY WAS MADE PRIMARILY WITH A LEICA 394 DUAL FREQUENCY GLOBAL POSITIONING SYSTEM, USING STATIC, RAPID STATIC AND REAL TIME POSITIONING METHODS. AS REQUIRED, A 500KG SET 45 FIVE SECOND TOTAL STATION WAS USED TO TIE OR ESTABLISH CORNERS. THE NORMAL PROCEDURE WAS TO SURVEY TO KNOWN CORNERS USING RAPID STATIC MEASUREMENTS FROM TWO BASE STATION POSITIONS. RE-ESTABLISHED CORNERS WERE SET BY REAL TIME METHODS AND THE MONUMENT POSITIONS VERIFIED BY RAPID STATIC MEASUREMENTS WHICH WERE LATER PROCESSED FOR CONFIRMATION. CORNER ACCESSORIES WERE MEASURED WITH COMPASS AND STEEL TAPE.

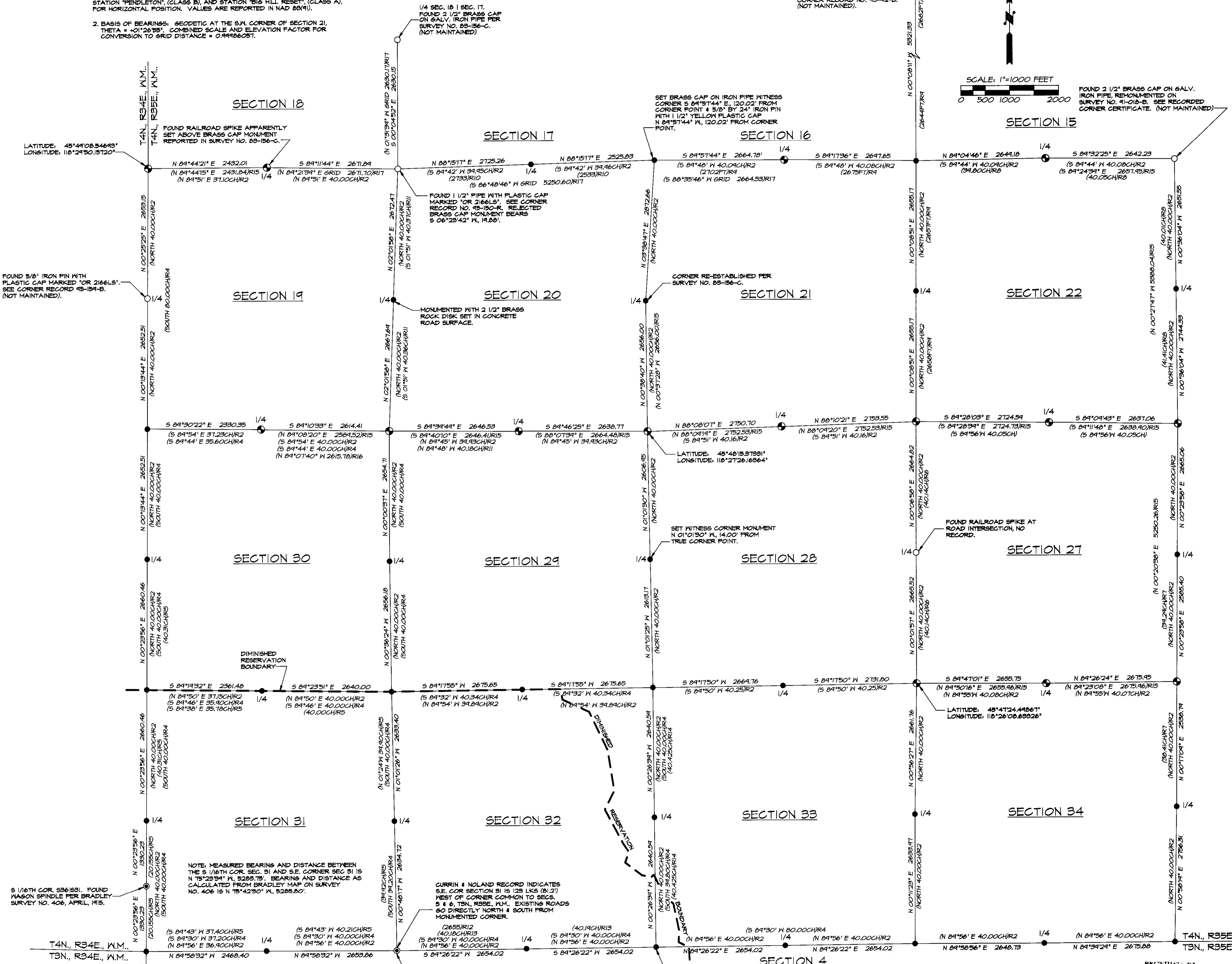
ALL OF SECTION 31 AND A PORTION OF SECTIONS 32 & 33 ARE WITHIN THE BOUNDARY OF THE DIMINISHED UMATILLA INDIAN RESERVATION. THERE ARE INCONSISTENCIES IN SURVEY METHODS BETWEEN CURRIN AND NOLAND'S ORIGINAL METHODS AND PLAT AND SURVEY METHODS USED BY COUNTY SURVEYORS SURVEYING IN SECTIONS 31, 32 & 33. ADDITIONALLY, PORTIONS OF CURRIN AND NOLAND'S ORIGINAL NOTES ARE INCONSISTENT WITH OTHER PORTIONS OF THEIR NOTES. FOR THIS SURVEY, I HAVE USED THE RECORD BY WILLARD BRADLEY FOR RE-ESTABLISHING CORNERS ON THE EXTERIOR OF SECTION 31. BRADLEY RECOVERED A NUMBER OF ORIGINAL CORNERS AND SUBDIVIDED SECTION 31 IN 1915, PER SURVEY NO. 406. WHEN BRADLEY SUBDIVIDED SECTION 31 HE DID NOT USE THE "THREE MILE RULE" AS REPORTED BY CURRIN AND NOLAND. I HAVE MARKED THE MONUMENTS AT THE 1/4 CORNER AND SE CORNER OF SECTION 31, THE S 1/4 AND SE CORNER OF SECTION 32 AND THE S 1/4 CORNER OF SECTION 33 AS APPLYING TO SECTIONS NORTH OF THE TOWNSHIP LINE ONLY, IN CONFORMANCE WITH THE APPROVED CURRIN AND NOLAND PLAT FOR T4N., R33E., T4N., UMATILLA COUNTY, OREGON. ALL SURVEYS MADE IN THESE SECTIONS AFTER THE CURRIN AND NOLAND SURVEY INDICATE THE CORNERS NORTH OF THE TOWNSHIP LINE ARE COMMON WITH SECTIONS SOUTH OF THE TOWNSHIP LINE.

SURVEYORS SHOULD NOTE THE BRADLEY SURVEY IN SECTION 31, THE KIMBRELL SURVEYS IN SECTION 32 AND ALL OTHER RECORD SURVEYS MADE AFTER THE CURRIN AND NOLAND SURVEY REFER TO THE CORNERS OF SECTION 31, 32 & 33 AS BEING COMMON TO SECTIONS 4, 5 & 6. SURVEYORS WORKING IN SECTIONS 31, 32 AND 33, T4N., R33E., AND SECTIONS 4, 5 AND 6, T3N., R35E., T4N., UMATILLA COUNTY, OREGON, SHOULD NOTE INCONSISTENCIES IN THE RECORDED RECORD AND MAKE THEIR OWN JUDGMENTS ON HOW TO USE THE CORNERS IN FUTURE SECTION SUBDIVISION WORK IN SECTIONS 31, 32 & 33, T4N., R33E., AND SECTIONS 4, 5 & 6, T3N., R35E., T4N., UMATILLA COUNTY, OREGON. NOTED PHYSICAL IMPROVEMENT EVIDENCE SUCH AS FIELD LINES AND ROADS, OBSERVED ON THE GROUND AND ON EARLIER AERIAL PHOTOS, SHOULD BE INDICATED WHERE BUILT AS IF THE CORNERS APPLIED TO SECTIONS BOTH NORTH AND SOUTH OF THE TOWNSHIP LINE.

LAND CORNER RECORD FORMS:

THE LAND CORNER RECORD FORMS, FILED SEPARATELY, CONTAIN EXPLANATIONS, HISTORIES AND METHODS OF RE-ESTABLISHMENT, REMONUMENTATION AND MAINTENANCE FOR CORNERS VISITED ON THIS SURVEY. THE LAND CORNER RECORDS SHOULD BE CONSULTED FOR SPECIFIC INFORMATION ON EACH CORNER.

REGISTERED PROFESSIONAL LAND SURVEYOR <i>Will. R. Wells</i>	WILLIAM R. WELLS, PLS 357 N.E. HWY. 11 P.O. BOX 1696 PENDLETON, OR 97801 PHONE: (541) 276-6362	PROJECT: SURVEY FOR: UMATILLA COUNTY LOCATED IN SECTIONS 19-22 AND 27-34, TOWNSHIP 4 NORTH, RANGE 33 EAST, UMATILLA COUNTY, OREGON.
RECEIVED BY: Umatilla County Surveyor Date: 7-9-17 Rec'd By: RW No. 97-141-C	DATE: 06/04/17 DR. BY: DMT CK. BY: RWK NO: 46-425	RENEWS 6/30/98



SECTION 4
SECTION 5
SECTION 6
SECTION 3
SECTION 34
SECTION 33
SECTION 32
SECTION 31
SECTION 27
SECTION 28
SECTION 29
SECTION 30
SECTION 20
SECTION 21
SECTION 16
SECTION 17
SECTION 18
SECTION 19

T4N., R34E., T4N., R35E., T3N., R34E., T3N., R35E.

NOTE: MEASURED BEARINGS AND DISTANCE BETWEEN THE S 1/16TH COR. SEC. 31 AND S.E. CORNER SEC. 31 IS N 75°23'34" W, 5285.75'. BEARING AND DISTANCE AS CALCULATED FROM BRADLEY MAP ON SURVEY NO. 406 IS N 75°42'30" W, 5285.80'.

CURRIN & NOLAND RECORD INDICATES S.E. COR SECTION 31 IS 128 LKS (81.2') WEST OF CORNER COMMON TO SECS. 5 & 6, T3N., R35E., T4N., UMATILLA COUNTY, OREGON. EXISTING ROADS 50 DIRECTLY NORTH & SOUTH FROM MONUMENTED CORNER.

CURRIN & NOLAND RECORD INDICATES S.E. COR SECTION 32 IS 34 LKS (22.4') WEST OF CORNER COMMON TO SECS. 4 & 5, T3N., R35E., T4N., UMATILLA COUNTY, OREGON. NO FIELD LINES, ROADS, OR FENCES EXIST NORTH OR SOUTH OF MONUMENTED CORNER.

S.E. COR. SEC. 31, FOUND STONE PER BRADLEY SURVEY NO. 406, APRIL, 1915.

NOTE: FOUND 1/2" PIPE WITH PLASTIC CAP MARKED "OR 2166L5". SEE CORNER RECORD 45-154-B. (NOT MAINTAINED).

MONUMENTED WITH 2 1/2" BRASS ROCK DISK SET IN CONCRETE ROAD SURFACE.

SET BRASS CAP ON IRON PIPE WITNESS CORNER S 84°51'44" E, 120.02' FROM CORNER POINT & 5'8" BY 24" IRON PIN WITH 1 1/2" YELLOW PLASTIC CAP N 84°51'44" W, 120.02' FROM CORNER POINT.

SET WITNESS CORNER MONUMENT N 01°01'30" W, 14.00' FROM TRUE CORNER POINT.

FOUND RAILROAD SPIKE AT ROAD INTERSECTION, NO RECORD.

FOUND RAILROAD SPIKE APPARENTLY SET ABOVE BRASS CAP MONUMENT REPORTED IN SURVEY NO. 85-156-C.

FOUND 5/8" IRON PIN WITH PLASTIC CAP MARKED "OR 2166L5". SEE CORNER RECORD 45-154-B. (NOT MAINTAINED).

FOUND 1/2" BRASS CAP ON GALV. IRON PIPE PER SURVEY NO. 85-156-C. (NOT MAINTAINED).