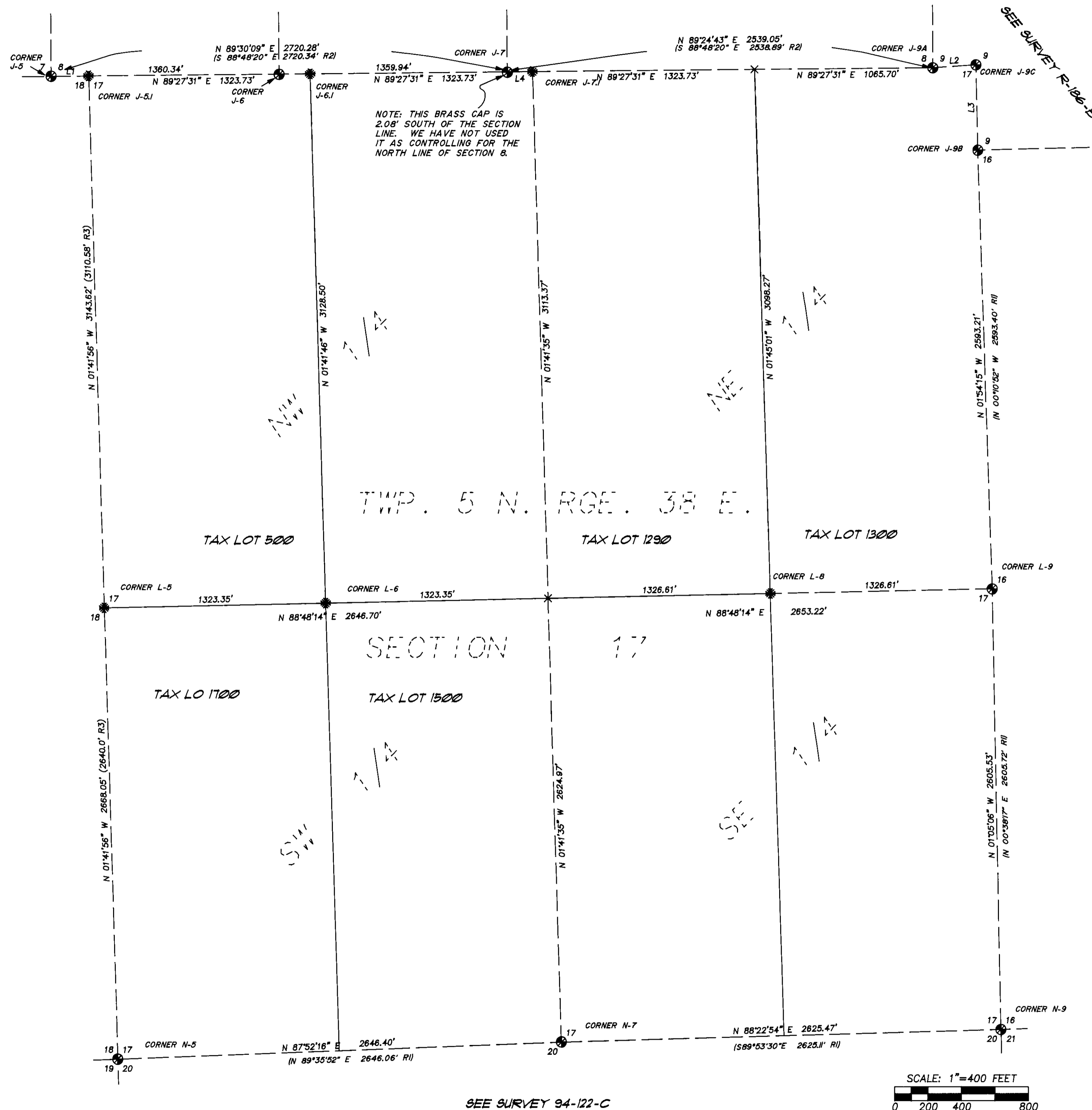


LINE NO.	BEARING	DISTANCE	REMARKS
L1	N 89°27'31" E	222.44'	(234.30' R3)
L2	N 86°11'29" E	258.41'	(N 86°10'30" E 257.89' R2)
L3	S 01°16'58" E	504.71'	(S 00°54'40" E 597.05' R2)
L4	N 88°39'50" E	149.63'	

BASIS OF BEARINGS

BEARINGS SHOWN ARE BASED ON THE OREGON STATE PLANE COORDINATE SYSTEM, NORTH ZONE, NAD 83-91, FROM A G.P.S. CONTROL TRAVERSE USING ASHTECH DUAL FREQUENCY RECEIVERS. NGS STATIONS "WALAIR II AND "ATHENA" WERE HELD AS CONTROLLING FOR SAID TRAVERSE.

LAND CORNER RECORDS



CORNER J-5
SOUTHWEST CORNER SECTION 8

CORNER HISTORY:
CORNER WAS ORIGINALLY ESTABLISHED IN 1872 BY WILLIAMS UNDER G.L.O. CONTRACT NO. 176 FOR CORNERS TO SECTIONS 7, 8, 17, 18 AS A POST. IN 1899, CAMPBELL RESURVEYED THE LINE BETWEEN SECTIONS 8 AND 17, AND FINDING THE PRIOR SURVEY OUT OF TOLERANCE, THEY REMOVED THE SCRIBING FROM THE BEARING TREES TO THE SOUTHEAST AND SOUTHWEST, AND RESET A 15"x10"x6" STONE AS THE CORNER TO SECTIONS 7 AND 8 ONLY. IN 1980, ANDERSON PERRY AND ASSOCIATES FAILED TO FIND EITHER THE STONE OR THE BEARING TREES, AND SET A 1"x30" PIPE WITH 3" BRASS CAP 6" BELOW GROUND FROM TOPOGRAPHIC CALLS IN CAMPBELL'S NOTES.

EVIDENCE FOUND:
FOUND 15" DEEP, ALONG THE WESTERLY EDGE OF THE DIRT ROAD RUNNING SOUTHERLY FROM BIG MEADOWS, A 3" BRASS CAP, STAMPED AS SHOWN ON THE CORNER RECORD. FOUND ALSO THE FOLLOWING BEARING TREES WITH SCRIBES PARTIALLY HEALED: AN 18" WHITE FIR N29°30'W 100.1' FROM CORNER, AND A 21" SPRUCE N74°E 54.4' FROM CORNER.

CORNER PERPETUATION:
WE ATTACHED A MONUMENT WARNING SIGN TO A TREE 3 FT. NORTH OF THE CORNER.

CORNER J-5.1
CLOSING CORNER COMMON TO SECTIONS 17 AND 18.

CORNER HISTORY:
CORNER WAS ORIGINALLY ESTABLISHED IN 1899 BY CAMPBELL UNDER G.L.O. CONTRACT NO. 699 AS A BASALT STONE 20"x15"x12" MARKED "CC" ON SOUTH FACE, FROM WHICH A 20" FIR BEARS S39°E 49 LINKS AND A 20" FIR BEARS S32°W 18 LINKS. IT WAS CAMPBELL'S INTENTION TO PLACE THIS CORNER AT THE INTERSECTION OF THE SECTION LINE BETWEEN SECTIONS 17 AND 18 WITH THE SOUTH LINE OF SECTION 8.

EVIDENCE FOUND:
FOUND, HALF BURIED, A 12"x16"x20" STONE WITH 3/4" HIGH LETTERS "CC" ON SOUTH FACE. NO EVIDENCE OF THE BEARING TREES WAS FOUND.

CORNER PERPETUATION:
SET A 2 1/2" X 30" ALUMINUM PIPE AND CAP AT THE STONE'S POSITION, 27" IN THE GROUND. I INVERTED THE STONE AND SET IT ALONGSIDE THE PIPE. I SCRIBED THE PIPE: "TSM R38E A.M. SIB/S17 C.C. L52360 1995", AND SCRIBED THE FOLLOWING TREES WITH THE APPROPRIATE TOWNSHIP, RANGE, AND SECTION DESIGNATIONS: A 10" DOUGLAS FIR S63°16'W 11.3' FROM THE CORNER, AND A 10" DOUGLAS FIR S70°16'E 16.6' FROM THE CORNER.

ADDITIONAL NOTE:
THE MONUMENTED CORNER IS AN "AMENDED CORNER." THE ACTUAL CLOSING CORNER, WHICH IS NOT SET, BEARS N01°41'56"W 1.70 FT. FROM THE PIPE.

CORNER J-6
WEST 1/16 CORNER ON LINE BETWEEN SECTIONS 8, AND 17, CONTROLLING FOR SECTION 8, ONLY.

CORNER HISTORY:
CORNER WAS ESTABLISHED BY ANDERSON PERRY AND ASSOC. IN 1980. SEE SURVEY R-186-B.

EVIDENCE FOUND:
FOUND 3" BRASS CAP ON 1" PIPE, PROTRUDING 6". FOUND ALSO 10" TAMARACK WITH HEALED BLAZE N16°W 42.3 FT. FROM CORNER, AND 11" FIR N60°E 16.3 FT.

CORNER PERPETUATION:
NONE.

CORNER J-6.1
WEST 1/16 CORNER ON LINE BETWEEN SECTIONS 8 AND 17, CONTROLLING FOR SECTION 17 ONLY.

CORNER HISTORY:
NONE.

CORNER PERPETUATION:
SET 5/8" X 30" REBAR WITH 2" ALUMINUM CAP STAMPED "TOMKINS SURVEYING- W 1/16 SEC. 17 ONLY". ALSO SCRIBED A 10" WHITE FIR S40°04'W 22.0' 1/16 BT" AND A 10" WHITE FIR S01°45'W 5.6'.

CORNER J-7
SOUTH 1/4 CORNER SEC. 8, CONTROLLING FOR SEC. 8 ONLY.

CORNER HISTORY:
CORNER WAS ORIGINALLY ESTABLISHED BY WILLIAMS IN 1872 AS A POST, UNDER G.L.O. CONTRACT NO. 176. ANDERSON PERRY AND ASSOC., IN 1980, PER SURVEY R-186-B, RE-ESTABLISHED CORNER AT A PROPORTIONED POSITION AS A 1" PIPE AND 3" BRASS CAP, WITH TREES.

EVIDENCE FOUND:
FOUND, BURIED 3", A 3" BRASS CAP STAMPED "CROWN ZELLERBACH 1/4 S.8 - PLS 1294". ALSO FOUND A 14" TAMARACK WITH HEALED BLAZE N33°W 94.9' AND A 10" FIR WITH MOSTLY HEALED BLAZE N20°E 60.6'.

CORNER PERPETUATION:
NONE.

CORNER J-7.1
NORTH 1/4 CORNER SEC. 17, CONTROLLING FOR SEC. 17 ONLY.

CORNER HISTORY:
CORNER WAS ORIGINALLY ESTABLISHED IN 1899 BY CAMPBELL UNDER G.L.O. CONTRACT NO. 699 AS A FIR POST, FROM WHICH A 14" SPRUCE BEARS S26°E 7 LINKS.

EVIDENCE FOUND:
NONE.

CORNER PERPETUATION:
AT A PROPORTIONED POSITION BETWEEN THE N.E. AND N.W. CORNERS OF SECTION 17, ALONG THE SOUTH LINE OF SECTION 8 (SENIOR LINE) I SET A 5/8" X 30" REBAR WITH 2" ALUMINUM CAP STAMPED: "TOMKINS SURVEYING 1/4 S.17 ONLY" S62°08'W 43.9 FT. FROM WHICH I SCRIBED A 12" WHITE FIR 1/4 BT" AND S06°03'W 68.0 FT. FROM WHICH I SCRIBED A 10" TAMARACK 1/4 BT".

CORNERS J-9A, J-9B, AND J-9C
SOUTHEAST CORNER SEC. 8, SOUTHWEST CORNER SECTION 9, NORTHEAST CORNER SECTION 17.

THESE CORNERS WERE ALL 3" BRASS CAPS ON 1" PIPE WITH BEARING TREE ACCESSORIES AS DESCRIBED IN THE LAND CORNER RECORDS FILED UNDER SURVEY R-186-B.

CORNER L-5
WEST 1/4 CORNER SECTION 17

CORNER HISTORY:
CORNER WAS ORIGINALLY ESTABLISHED IN 1899 BY CAMPBELL UNDER G.L.O. CONTRACT NO. 699 AS A FIR POST, FROM WHICH A 26" FIR BEARS N72°30'E 74 LINKS, AND A 30" FIR BEARS N50°W 94 LINKS.

EVIDENCE FOUND:
NONE.

CORNER PERPETUATION:
AT A PROPORTIONED POSITION ALONG WEST LINE OF SECTION 17, I SET A 5/8" X 30" REBAR WITH 2" ALUMINUM CAP STAMPED "TOMKINS SURVEYING 1/4 S18/S17", N20°25'W 23.5 FT. FROM WHICH I SCRIBED A 15" RED FIR "S18 1/4 BT" AND S58°17'E 32.1 FT. FROM WHICH I SCRIBED A 15" WHITE FIR "S17 1/4 BT".

CORNER L-6
CENTER - WEST 1/16 CORNER SECTION 17.

CORNER HISTORY:
NONE.

CORNER PERPETUATION:
AT A POINT APPROX. 60 FT. N.E. OF INTERSECTION OF THE ROAD TO THE SAWMILL AT THE NORTH 1/4 CORNER AND THE ROAD TO THE SOUTH 1/4 CORNER, I SET A 5/8" X 30" REBAR WITH 2" ALUMINUM CAP STAMPED "TOMKINS SURVEYING- CW 1/16 S17", S55°07'W 46.8' FROM WHICH I SCRIBED A 10" SPRUCE 1/16 BT" AND S75°47'E 25.2 FT. FROM WHICH I SCRIBED A 10" FIR 1/16 BT".

CORNER L-8
CENTER - EAST 1/16 CORNER SEC. 17.

CORNER HISTORY:
NONE.

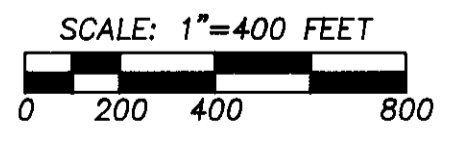
CORNER PERPETUATION:
SET A 5/8" X 30" REBAR WITH 2" ALUMINUM CAP STAMPED "TOMKINS SURVEYING CE 1/16 S17" N82°13'W 32.9 FT. FROM WHICH I SCRIBED A 10" SPRUCE 1/16 BT" AND N46°00'W 20.3 FT. FROM WHICH I SCRIBED A 30" FIR 1/16 BT". AN OLD STEEL FENCE POST, POSSIBLY SET BY B.L.M. BEARS S0°43'W 33.9 FT. FROM THE CORNER. I ATTACHED A BEARING TREE SIGN TO THIS POST.

CORNERS L-9, N-5, N-7, AND N-9
EAST 1/4 CORNER SEC. 17, S.W. CORNER SEC. 17, SOUTH 1/4 CORNER SEC. 17, AND S.E. CORNER SEC. 17.

THESE CORNERS WERE ALL 5/8" REBARS WITH 2" ALUMINUM CAPS, EXCEPT THE EAST 1/4 CORNER OF SECTION 17, WHICH WAS A BASALT STONE WITH POST ALONGSIDE. THE ACCESSORIES AND DESCRIPTIVE INFORMATION FOR THESE CORNERS IS CONSISTENT WITH THAT SHOWN ON SURVEY 94-122-C, BY TOMKINS FOR BOSIO (1994.)

LEGEND

- SECTION OR SECTION SUBDIVISION LINE
- TAX LOT BOUNDARY
- ⊗ FOUND SURVEY MONUMENT AS DESCRIBED
- ⊗ SET 5/8" X 30" REBAR WITH 2" ALUMINUM CAP FOR CORNER.
- ⊗ SEE LAND CORNER RECORDS FOR DESCRIPTION OF ACCESSORIES.
- ⊗ CALCULATED POINT, NOT FOUND OR SET.
- (R1) RECORD DIMENSION FROM SURVEY 94-122-C
- (R2) RECORD DIMENSION FROM 1980 SURVEY R-186-B.
- (R3) RECORD DIMENSION FROM 1899 SURVEY BY CAMPBELL, G.L.O. CONTRACT 699.



REGISTERED PROFESSIONAL LAND SURVEYOR
 Paul W.P. Tomkins
 OREGON
 JULY 26, 1988
 PAUL W.P. TOMKINS
 2380
 RENEWS 6/30/98
 12/30/95

NARRATIVE

THIS SURVEY WAS PERFORMED AT THE REQUEST OF MR. HAROLD NIBLER TO LOCATE PROPERTY LINES. AT THE TIME OF THIS SURVEY CORNERS WERE SET AS SHOWN HEREIN. IT IS OUR SUBSEQUENT PLAN TO SET POSTS ALONG THE NORTH-SOUTH CENTERLINES OF THE NORTHEAST AND NORTHWEST 1/4 SECTIONS AND ALONG THE INTERCONNECTING 1/4 SECTION LINE.

THIS SURVEY WAS PERFORMED AS A CLOSED FIELD TRAVERSE USING SOKKIA AUTOMATIC TOTAL STATIONS HAVING STANDARD ERRORS OF 3 MILLIMETERS ± 2 PARTS PER MILLION AND 0°00'02". THE TRAVERSES WERE ADJUSTED USING LEAST SQUARES.

A SURVEY OF LANDS WITHIN SECTION 17 OF TOWNSHIP 5 NORTH, RANGE 38 EAST OF THE WILLAMETTE MERIDIAN, BEING LOCATED WHOLLY WITHIN UMATILLA COUNTY, STATE OF OREGON	SCALE	PAUL W.P. TOMKINS, LAND SURVEYOR 6 1/2 N. SECOND SUITE 303 WALLA WALLA, WA. 99362 FOR: HAROLD NIBLER RT. 4 BOX 621 MILTON FREEWATER OR	NIBLER.DWG
	HOR. VERT. 1" = 400'		
	DATE		
	OCTOBER, 1995		SHEET OF