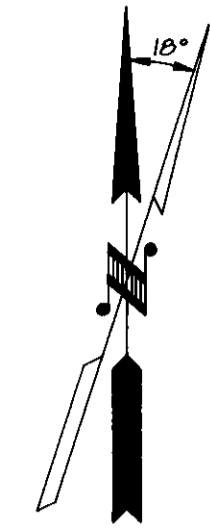


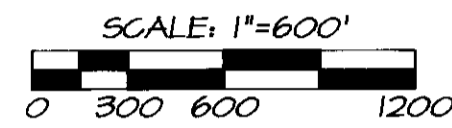
RECORD OF SURVEY PLAT

FLY BY 1993 CADASTRAL SURVEY
 CONTRACT NO. 53-04M3-3-0083
 PERFORMED FOR THE USDA, FOREST SERVICE,
 WALLOWA-WHITMAN NATIONAL FOREST
 SECTIONS 8, 17, 20 & 29, T5S., R34E., W.M.
 UMATILLA COUNTY, OREGON



AVERAGE MAGNETIC DECLINATION
 FOR PROJECT: 18° EAST

BEARINGS ARE BASED ON A SOLAR OBSERVATION
 (ALTITUDE METHOD), TAKEN AT THE SOUTHEAST CORNER OF SECTION 8.



NARRATIVE OF SURVEY

THIS SURVEY WAS PERFORMED AT THE REQUEST OF THE WALLOWA-WHITMAN NATIONAL FOREST, UNDER CONTRACT NO. 53-04M3-3-0083. THE PURPOSE OF THIS SURVEY WAS TO PARTIALLY SUBDIVIDE SECTIONS 8 AND 17, T5S., R34E., W.M., AS SHOWN ON THIS PLAT.

NATIONAL FOREST BOUNDARIES WERE POSTED WITH 6 FOOT STEEL FENCE POSTS WITH NATIONAL FOREST BOUNDARY SIGNS 54-2 ATTACHED. CORNER RECORDS WERE PREPARED AND RECORDED SEPARATELY FOR EACH CORNER MAINTAINED, REMONUMENTED, RE-ESTABLISHED OR ESTABLISHED.

SEVERAL PUBLIC LAND SURVEY CORNERS WERE DECLARED LOST AFTER DILIGENT SEARCH AND WERE RE-ESTABLISHED AS FOLLOWS:

THE NORTH 1/4 CORNER OF SECTION 8 WAS RE-ESTABLISHED BY SINGLE PROPORTION MEASUREMENT BETWEEN THE RECOVERED NORTHWEST AND NORTHEAST CORNERS OF SECTION 8.

THE NORTH 1/4 CORNER OF SECTION 17 WAS RE-ESTABLISHED BY SINGLE PROPORTION MEASUREMENT BETWEEN THE RECOVERED NORTHWEST AND NORTHEAST CORNERS OF SECTION 17.

THE SOUTH 1/4 CORNER OF SECTION 17 WAS RE-ESTABLISHED BY SINGLE PROPORTION MEASUREMENT BETWEEN THE RECOVERED SOUTHWEST AND SOUTHEAST CORNERS OF SECTION 17.

THE WEST 1/4 CORNER OF SECTION 17 WAS RE-ESTABLISHED BY SINGLE PROPORTION MEASUREMENT BETWEEN THE RECOVERED SOUTHWEST AND NORTHWEST CORNERS OF SECTION 17.

THE SOUTH 1/4 CORNER OF SECTION 18 WAS RE-ESTABLISHED BY SINGLE PROPORTION MEASUREMENT BETWEEN THE RECOVERED SOUTHWEST AND SOUTHEAST CORNERS OF SECTION 18.

MEASUREMENTS WERE MADE WITH A SOKKIA SET 3B AUTOMATIC TOTAL STATION WITH STANDARD ERRORS OF PLUS OR MINUS 3 SECONDS ANGULAR AND 5 MM, PLUS OR MINUS 3 PARTS PER MILLION TIMES DISTANCE FOR LINEAR MEASUREMENT. CONTROL TRAVERSES WERE ADJUSTED BY "LEAST SQUARES" METHOD. OFFSETS TO POSTED LINE WERE MADE WITH A HAND COMPASS AND STEEL TAPE FROM CONTROL AND POSTING POINTS.

FIELD BOOK REFERENCE: BOOK 1 OF 1, FLY BY '93 CADASTRAL SURVEY.

SURVEYOR'S CERTIFICATE

I, WILLIAM R. WELLS, A REGISTERED PROFESSIONAL LAND SURVEYOR IN THE STATE OF OREGON, DO HEREBY CERTIFY THAT THIS PLAT, AND THE CORNER RECORDS FILED SEPARATELY, ARE A CORRECT REPRESENTATION OF A SURVEY PERFORMED BY ME DURING THE MONTHS OF SEPTEMBER, OCTOBER & NOVEMBER 1993, AT THE REQUEST OF THE USDA FOREST SERVICE, AND IN CONFORMANCE WITH MY CONTRACT.

THIS CERTIFICATION APPLIES TO THIS PLAT, AND THE CORNER RECORDS FILED SEPARATELY.

REGISTERED
 PROFESSIONAL
 LAND SURVEYOR

OREGON
 JULY 22, 1977
 WILLIAM R. WELLS
 1108
 RENEWS 12/31/94

WILLIAM R. WELLS, PLS
 OREGON LICENSE NO. 1106

EXAMINED AND ACCEPTED FOR THE U.S. FOREST SERVICE THIS 28 DAY
 OF JULY, 1994.

Roger Deen COR.

I CERTIFY THAT THIS SURVEY WAS PERFORMED AT THE REQUEST OF THE
 WALLOWA-WHITMAN NATIONAL FOREST.

William R. Wells
 NATIONAL FOREST SUPERVISOR

7/28/94
 DATE

HISTORY OF SURVEYS

TOWNSHIP 5 SOUTH, RANGE 34 EAST, W.M., WAS SUBDIVIDED BY RUFUS S. MOORE, U.S. DEPUTY SURVEYOR, UNDER CONTRACT NO. 451, DATED JUNE 12, 1882.

EAST LINES OF SECTIONS 8 AND 17, T5S., R34E., W.M., WERE RESURVEYED BY JAMES H. HAMBLETON, LS 645, UNDER USDA FOREST SERVICE CONTRACT IN 1918. (UMATILLA COUNTY SURVEY NO. 93-34-B).

LEGEND

- - FOUND 2 1/2" BRASS CAP ON 2 1/2" GALV. IRON PIPE SET BY JAMES H. HAMBLETON, LS 645, AS SHOWN ON MAP OF SURVEY NO. 93-34-B. (SURVEYED IN 1918).
- ⊕ - FOUND 2" BRASS CAP ON 2" GALV. IRON PIPE BY JAMES G. VOELZ, LS 381, AS INDICATED ON CERTIFIED LAND CORNER RECORD NO. 93-34-B. (REMONUMENTED IN 1964).
- - FOUND ACCEPTABLE ORIGINAL CORNER EVIDENCE AND REMONUMENTED WITH 2 1/2" ALUM. CAP ON 2 1/2" X 30" ALUM. PIPE. SEE CORNER RECORD FILED SEPARATELY.
- - CORNERS ESTABLISHED OR RE-ESTABLISHED BY SURVEY. MONUMENTED WITH A 2 1/2" X 30" ALUM. PIPE WITH 1/2" ALUM. CAP UNLESS OTHERWISE NOTED. (CORNER RECORD FILED SEPARATELY).
- X - CALCULATED CORNER POSITIONS OR SEARCH POINTS.
- - NATIONAL FOREST BOUNDARY POSTED ON THIS SURVEY WITH 6" STEEL FENCE POSTS WITH SIGNS 54-2 ATTACHED.
- (XOX)R1 - RECORD REPORTED ON CONTRACT NO. 451, BY RUFUS S. MOORE, U.S. DEPUTY SURVEYOR. CONTRACT DATED JUNE 12, 1882.
- (XOX)R2 - RECORD REPORTED ON SURVEY NO. 93-34-B, BY JAMES H. HAMBLETON, LS 645. (SURVEYED IN 1918).
- == - ROADS.
- - FENCES.
- (NFSL) - INDICATES NATIONAL FOREST SYSTEM LANDS.
- (PVT) - INDICATES PRIVATE LAND.

CORNER SEARCHED BUT NOT RECOVERED, CERTIFIED LAND CORNER RECORD RECORDED.

1/4 CORNER SEARCHED BUT NOT RECOVERED, CERTIFIED LAND CORNER RECORD RECORDED.

T5S., R33 1/2E., W.M.,
 T5S., R34E., W.M.

(S 84°50'E 40.50 CHRI
 N 04°48'17" E 2786.09')

(S 84°50' E 40.00 CHRI
 N 04°48'17" E 2781.70')

(N 04°51' W 40.06 CHRI
 S 84°55'41" W 2650.71')

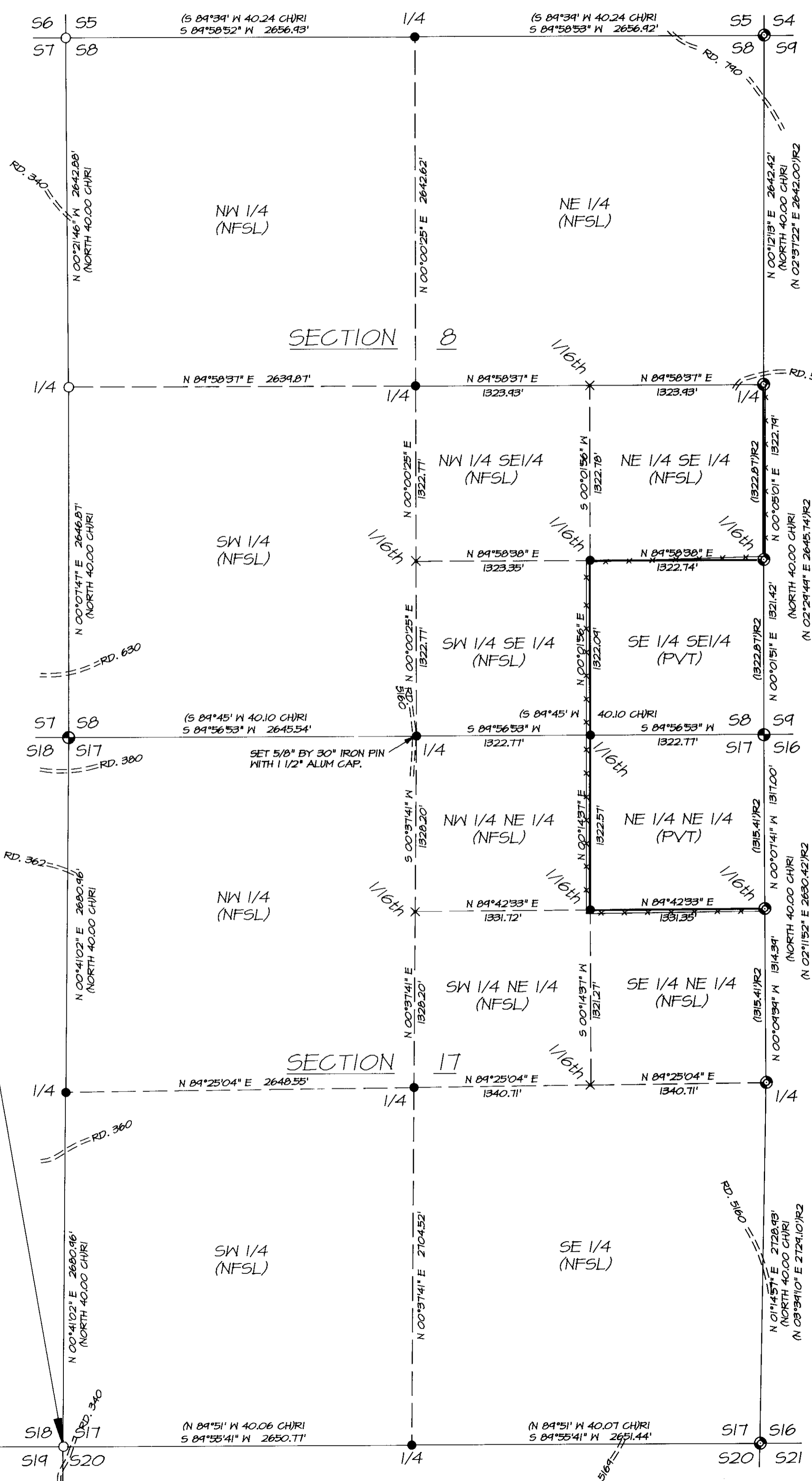
(N 04°51' W 40.07 CHRI
 S 84°55'41" W 2651.44')

S13 S18
 S24 S19

S30 S29
 S31 S32

S18 S17
 S19 S20

S17 S16
 S20 S21



FLYPROP

18 monumentation
 sheet 5

WILLIAM R. WELLS, PLS 357 N.E. HWY. 11 P.O. BOX 1696 PENDLETON, OR 97801 PHONE: (503) 276-6362		PROJECT: FLY BY CADASTRAL SURVEY CONTRACT NO. 53-04M3-3-0083	
DATE: 12/3/1993	DR. BY: WEG	CK. BY: WRW	NO: 93-198