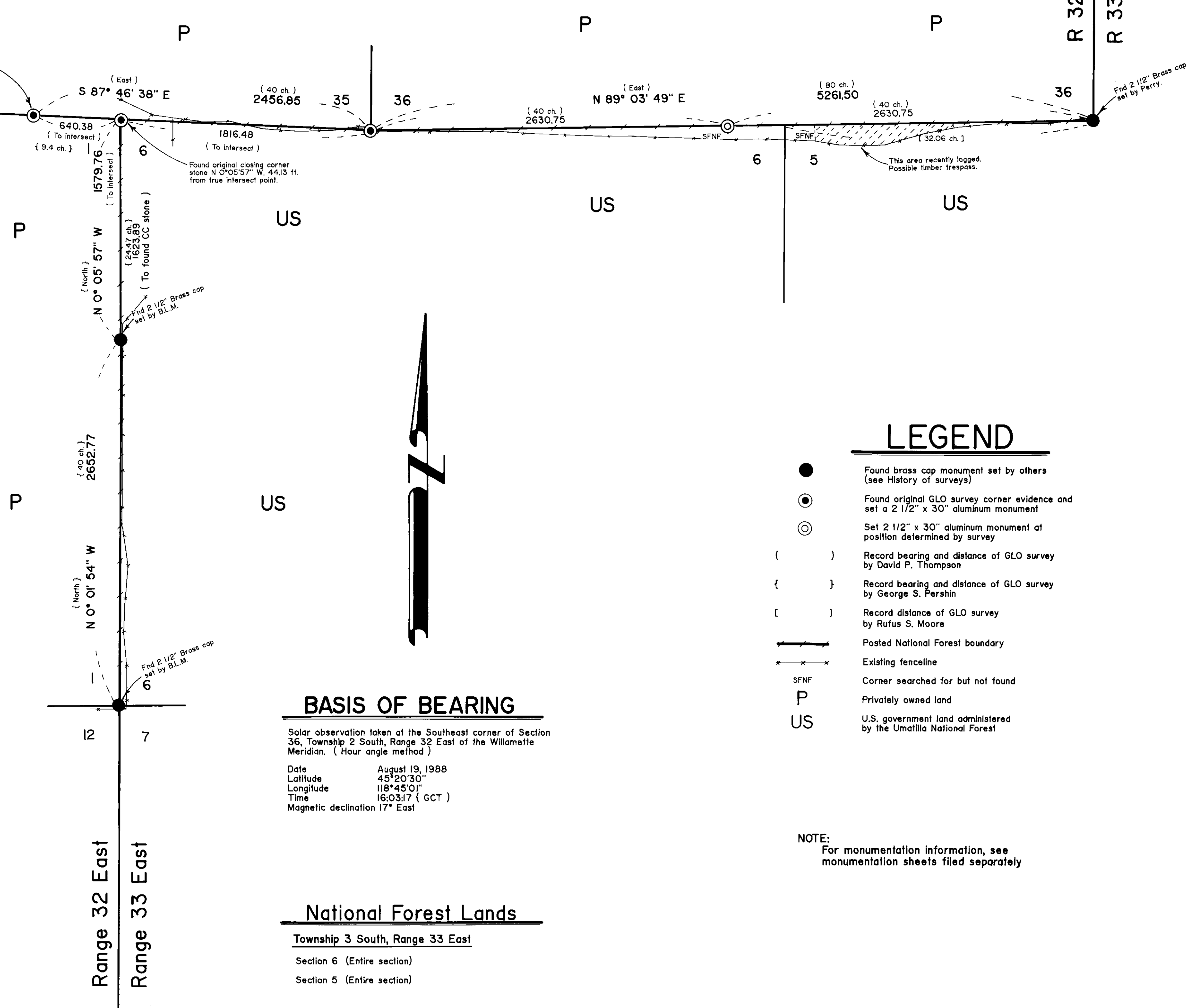


Township 2 South
Township 3 South



HISTORY OF SURVEYS

The line between Townships 2 and 3 South was originally established by David P. Thompson under GLO contract number 106, dated August 16, 1864.

The line between Township 3 South, Ranges 32 and 33 East was originally established by George S. Pershin under GLO contract number 430, dated March 23, 1882.

Township 3 South, Range 33 East was originally subdivided by Rufus S. Moore under GLO contract number 491, dated June 12, 1882.

The East quarter corner and the Southwest corner of Section 6, Township 3 South, Range 33 East were remonumented from original GLO corner evidence by Craig L. Wanless, BLM Group number 350, in 1977.

The Southeast corner of Section 36, Township 2 South, Range 32 East was remonumented from original GLO corner evidence in 1978 by Howard L. Perry, OPLS 1294.

LEGEND

- Found brass cap monument set by others (see History of surveys)
- ⊙ Found original GLO survey corner evidence and set a 2 1/2" x 30" aluminum monument
- ⊙ Set 2 1/2" x 30" aluminum monument at position determined by survey
- () Record bearing and distance of GLO survey by David P. Thompson
- { } Record bearing and distance of GLO survey by George S. Pershin
- [] Record distance of GLO survey by Rufus S. Moore
- Posted National Forest boundary
- Existing fence line
- Corner searched for but not found
- P Privately owned land
- US U.S. government land administered by the Umatilla National Forest

BASIS OF BEARING

Solar observation taken at the Southeast corner of Section 36, Township 2 South, Range 32 East of the Willamette Meridian. (Hour angle method)

Date August 19, 1988
 Latitude 45°20'30"
 Longitude 118°49'01"
 Time 16:03:17 (GCT)
 Magnetic declination 17° East

National Forest Lands

Township 3 South, Range 33 East
 Section 6 (Entire section)
 Section 5 (Entire section)

SURVEYOR'S STATEMENT

I, Duane I. Griffith, Registered Land Surveyor in the State of Oregon, hereby certify that this plat and the notes hereon, or attached, are a true and correct representation of the survey I made in August and September, 1988, at the request of the USDA Forest Service, in accordance with the statutes of the State of Oregon and with the articles of my contract.

The township line West of the Range line between Township 3 South, Ranges 32 and 33 East was rerun and new corners set by George Pershin when he could not find any corners to close on in his subdivision of Township 3 South, Range 32 East. He set the South quarter corner of Section 35, Township 2 South, Range 32 East, he did not set any corners East of the range line because he did not need them for his survey. In my retracement I find the South quarter corner of Section 35 set by Pershin and the corner to Sections 35 and 36, set by Thompson in his original run. These corners mark the township line. This may be the reason for the heavy skew and somewhat short distance between these two corners.

On the North line of Section 5, near the Northwest corner of the section, I find what appears to be a possible timber trespass. This area is shown on the annexed plot. I did find old "Forest Boundary" signs on trees along the existing fence line.

I find no other unusual conditions.

Duane I. Griffith
 Duane I. Griffith, OPLS 644
 Bagett, Griffith and Associates
 2006 Adams Avenue
 LaGrande, Oregon
 September 8, 1988

REGISTERED PROFESSIONAL LAND SURVEYOR
Duane I. Griffith
 OREGON JULY 10, 1964
 DUANE I. GRIFFITH 644

Scale: 1" = 500'



1 Meter = 3.2808333333 Feet

NOTE: The information in these two boxes is for Forest Service record keeping purposes only.

PROJECT NAME Griety 1988 Cadastral Survey	Examined and accepted for the U.S. Forest Service this <u>20</u> day of <u>SEPT</u> , 1988 <i>Russell R. Jay Bond</i> C.O.R.
CONTRACT NUMBER OO-04R3-8-52	
FIELD BOOKS Traverse Book Number 1	I certify that this survey was performed at the request of the <u>UMATILLA</u>
Remonumentation Book Number 1	<i>D. Kearney Crullimore</i> NATIONAL FOREST SUPERVISOR SIGNATURE DATE <u>9/20/88</u>

RECEIVED BY
[Signature]
 No. 88-621

BAGETT - GRIFFITH & ASSOCIATES LaGrande, Oregon	
MAP OF SURVEY Location of the Umatilla National Forest boundary along the North and West lines of Section 6 and a portion of the North line of Section 5, Township 3 South, Range 33 East of the Willamette Meridian. UMATILLA COUNTY, OREGON	
SURVEYED FOR	Umatilla National Forest
SURVEYED BY	d.i.g. 889-88
Scale: 1" = 500'	Drawn by: R.G.R. 9-88