

TOWNSHIP 3 NORTH, RANGE 36 EAST, OF THE WILLAMETTE MERIDIAN, OREGON

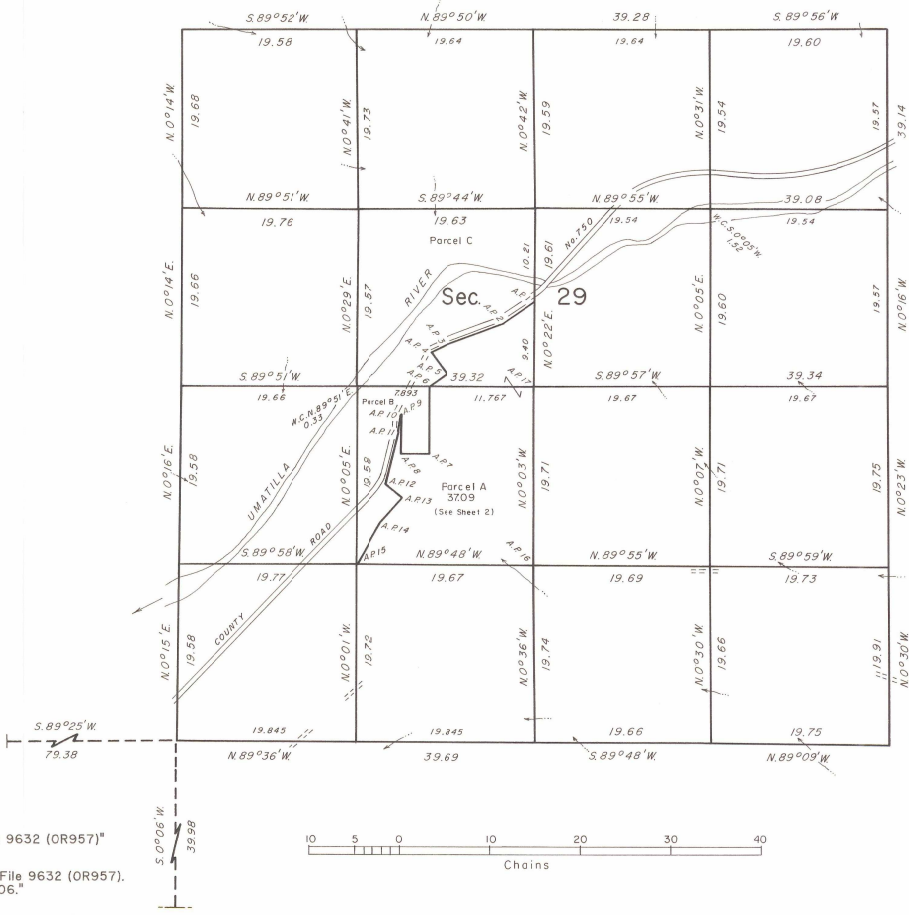
DEPENDENT RESURVEY, SUBDIVISION, AND METES-AND-BOUNDS SURVEY

A history of surveys is contained in the field notes.

This plat, in two sheets, represents a dependent resurvey of a portion of the subdivisional lines, designed to restore the corners in their true original locations according to the best available evidence, the subdivision of section 29, and the metes-and-bounds survey of parcel A in section 29, T. 3 N., R. 36 E., Willamette Meridian, Oregon.

Except as indicated hereon, the lottings and areas are as shown on the plat approved June 14, 1890.

Survey executed by Ronald W. Scherler, Cadastral Surveyor, beginning October 13, 1976, and completed June 20, 1979, pursuant to Special Instructions dated September 24, 1976, for Group No. 917, Oregon.



UNITED STATES DEPARTMENT OF THE INTERIOR
BUREAU OF LAND MANAGEMENT
Denver, Colorado November 12, 1980

This plat is strictly conformable to the approved field notes, and the survey, having been correctly executed in accordance with the requirements of law and the regulations of this Bureau, is hereby accepted.

For the Director

Gary S. Speight

Acting Chief, Cadastral Survey
Examination and Approval Staff

Latitude 45° 42.2' N.
Longitude 118° 19.9' W.

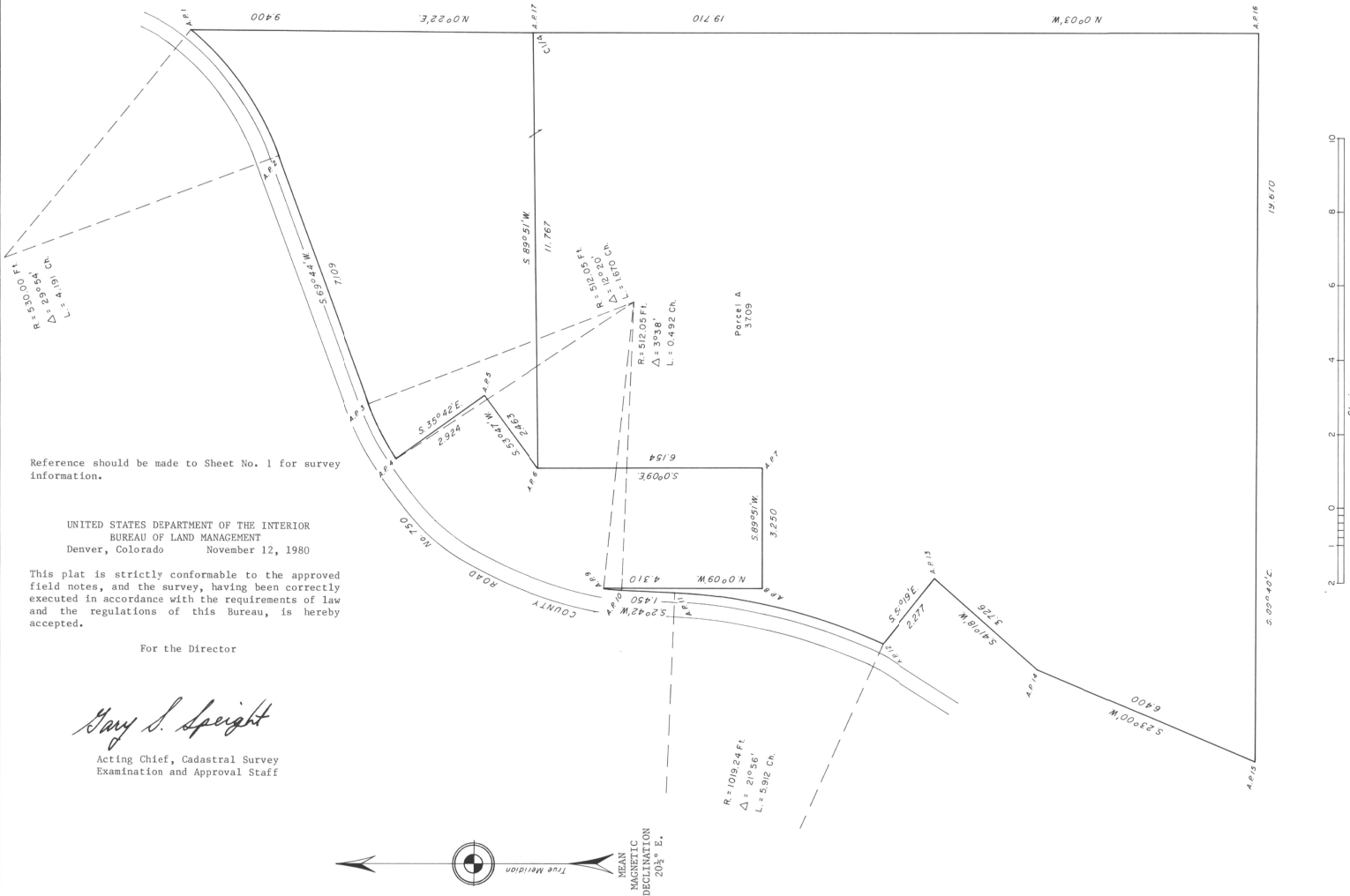
"Suspended May 24, 2004, see File 9632 (OR957)"

"Suspension Lifted, July 28, 2006, File 9632 (OR957).
Refer to plat accepted June 2, 2006."



TOWNSHIP 3 NORTH, RANGE 36 EAST, OF THE WILLAMETTE MERIDIAN, OREGON

DEPENDENT RESURVEY, SUBDIVISION, AND METES-AND-BOUNDS SURVEY



Reference should be made to Sheet No. 1 for survey information.

UNITED STATES DEPARTMENT OF THE INTERIOR
BUREAU OF LAND MANAGEMENT
Denver, Colorado November 12, 1980

This plat is strictly conformable to the approved field notes, and the survey, having been correctly executed in accordance with the requirements of law and the regulations of this Bureau, is hereby accepted.

For the Director

Gary S. Speight

Acting Chief, Cadastral Survey
Examination and Approval Staff