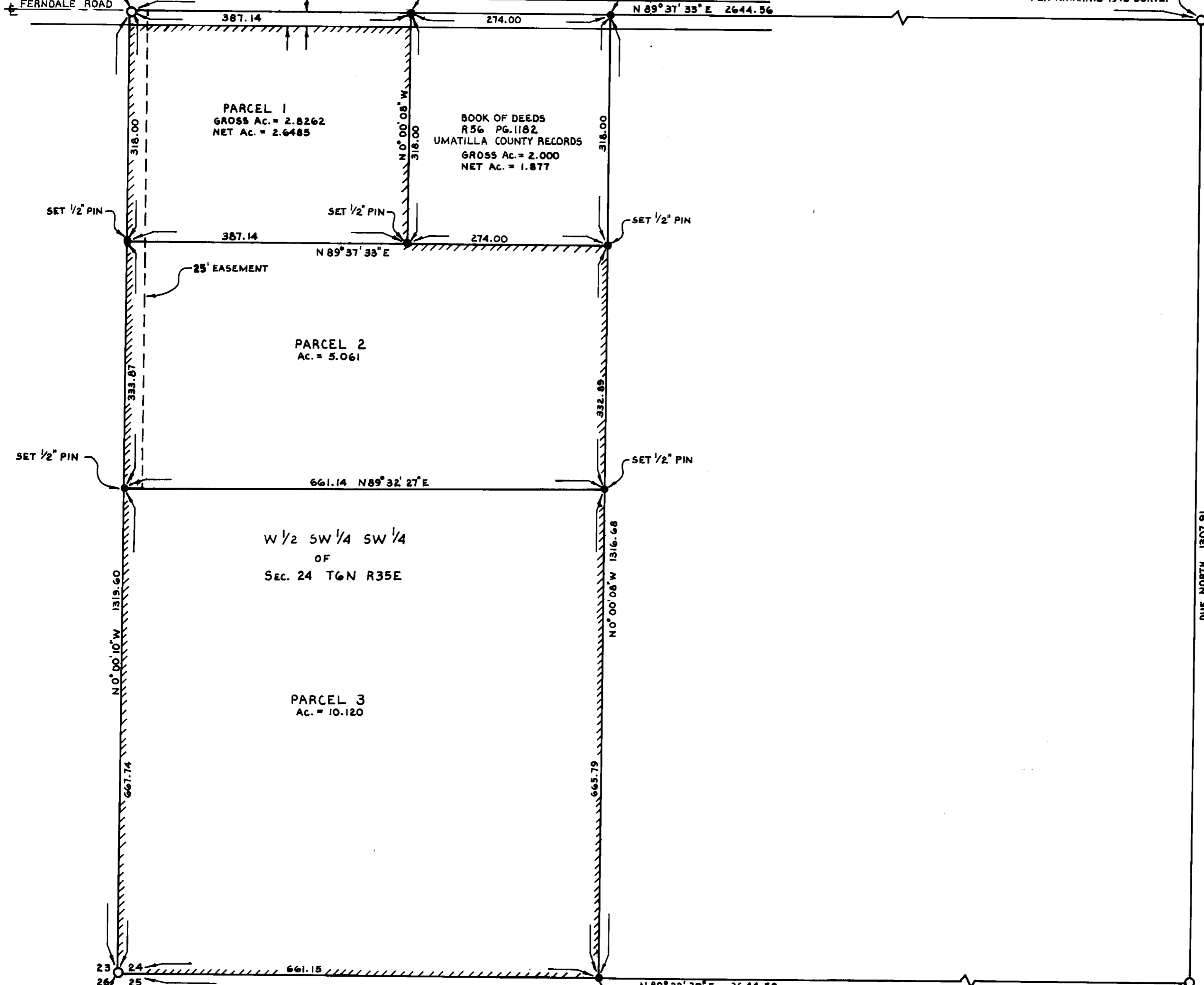


NW COR. OF THE  
SW 1/4 SW 1/4 SEC. 24  
FOUND RR. SPIKE  
PER W. HARRIS  
1973 SURVEY



FOUND 1/2" IRON PIN  
PER W. HARRIS 1975 SURVEY



BASIS OF BEARING IS THE  
NORTH-SOUTH QUARTER LINE  
OF SEC. 24 T6N R35E WM

REGISTERED  
PROFESSIONAL  
LAND SURVEYOR  
*Wayne G. Harris*  
WAYNE G. HARRIS  
346

LEGEND:  
● CORNER SET  
○ CORNER FOUND

WAYNE HARRIS Co. Inc.  
ENGINEERS - SURVEYORS PLANNERS  
PENDLETON, OREGON

PARTITION FOR DAVE PETERSON IN THE  
W 1/2 SW 1/4 SW 1/4 SEC. 24 T6N R35E WM

SCALE	DATE	DRN. BY	CHK.	DRW. NO.
1"=100'	2-18-80	FLM	GKS	80-189-B

FOUND 1/2" IRON PIN  
SW COR. SEC. 24  
PER W. HARRIS 1977 SURVEY  
RECEIVED BY  
Umatilla County Surveyor  
Date 3-12-80  
Rec'd by EL.S.  
No. B-43-B