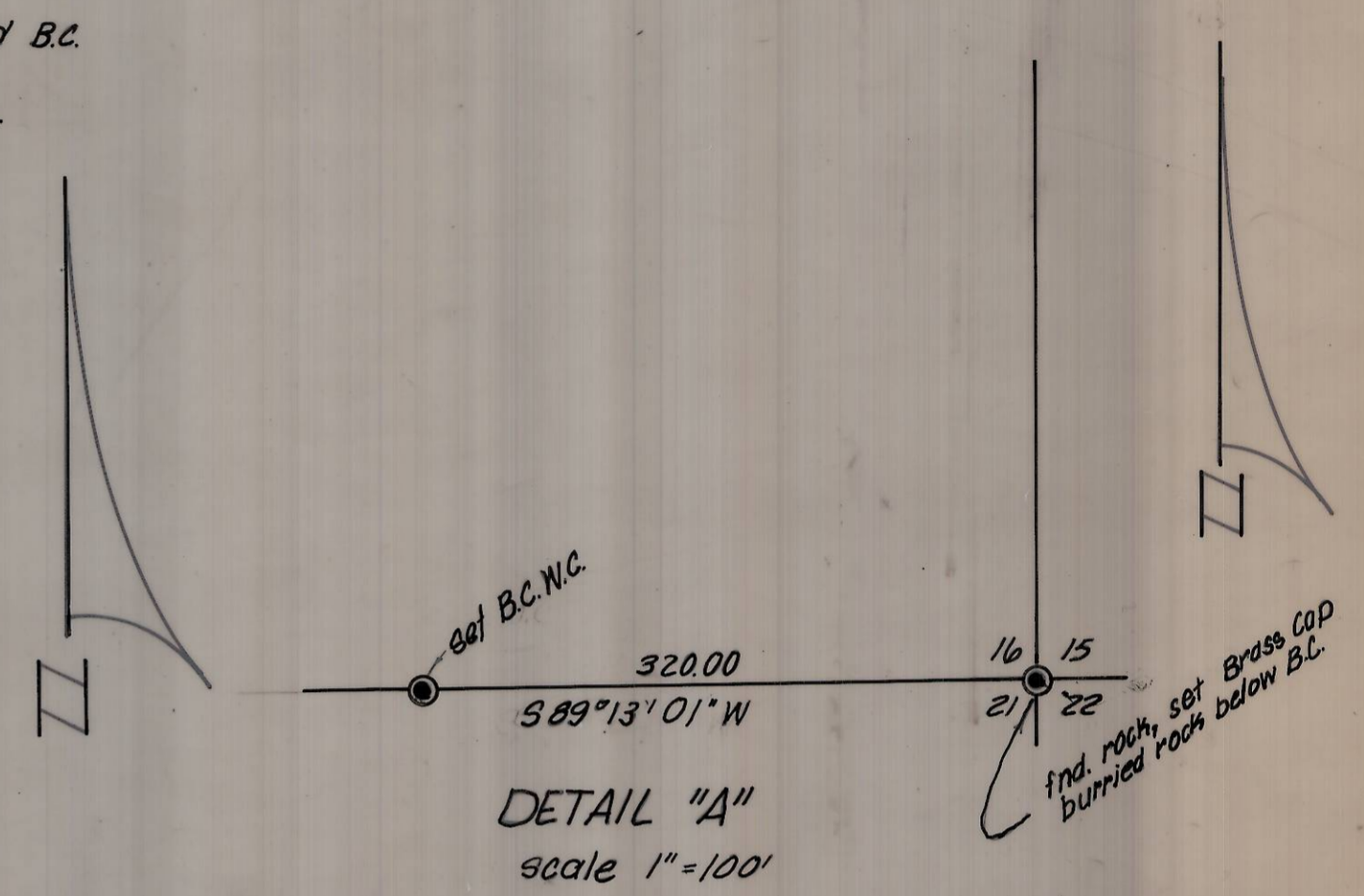


Scale: 1" = 500'



NOTES:

1. Center Section 16, T3N, R29E W.M. located from ties to center line of street monuments using information from Umatilla County Survey Records, Page 547, Book 1, dated August 15, 1904, by Kimbrell.
2. Bearings based on Umatilla County Survey Number I-202 Ax by Wayne Harris Co., Inc. Number 74-381.

RECEIVED BY
 Umatilla County Surveyor
 Date 4-25-79
 Rec'd By S. Parish
 No. G-1056B

REGISTERED
 PROFESSIONAL
 LAND SURVEYOR
David H. Krumbain
 OREGON
 JULY 17, 1979
 DAVID H. KRUMBAIN
 933

Revised April 12, 1979 MH

K	CRUMBAIN ENGINEERING CO.	SCALE
	ENGINEERS - SURVEYORS - PLANNERS	as shown
221 S. Main, Pendleton, Oregon		DATE
		Mar. 7, 1979
Survey for		DRN. BY
ECHO SCHOOL DISTRICT		T.A.G.
Section 16, T3N, R29E W.M.		CKD. BY
		J.R.S.
		DRNG. NO.
		29-12C