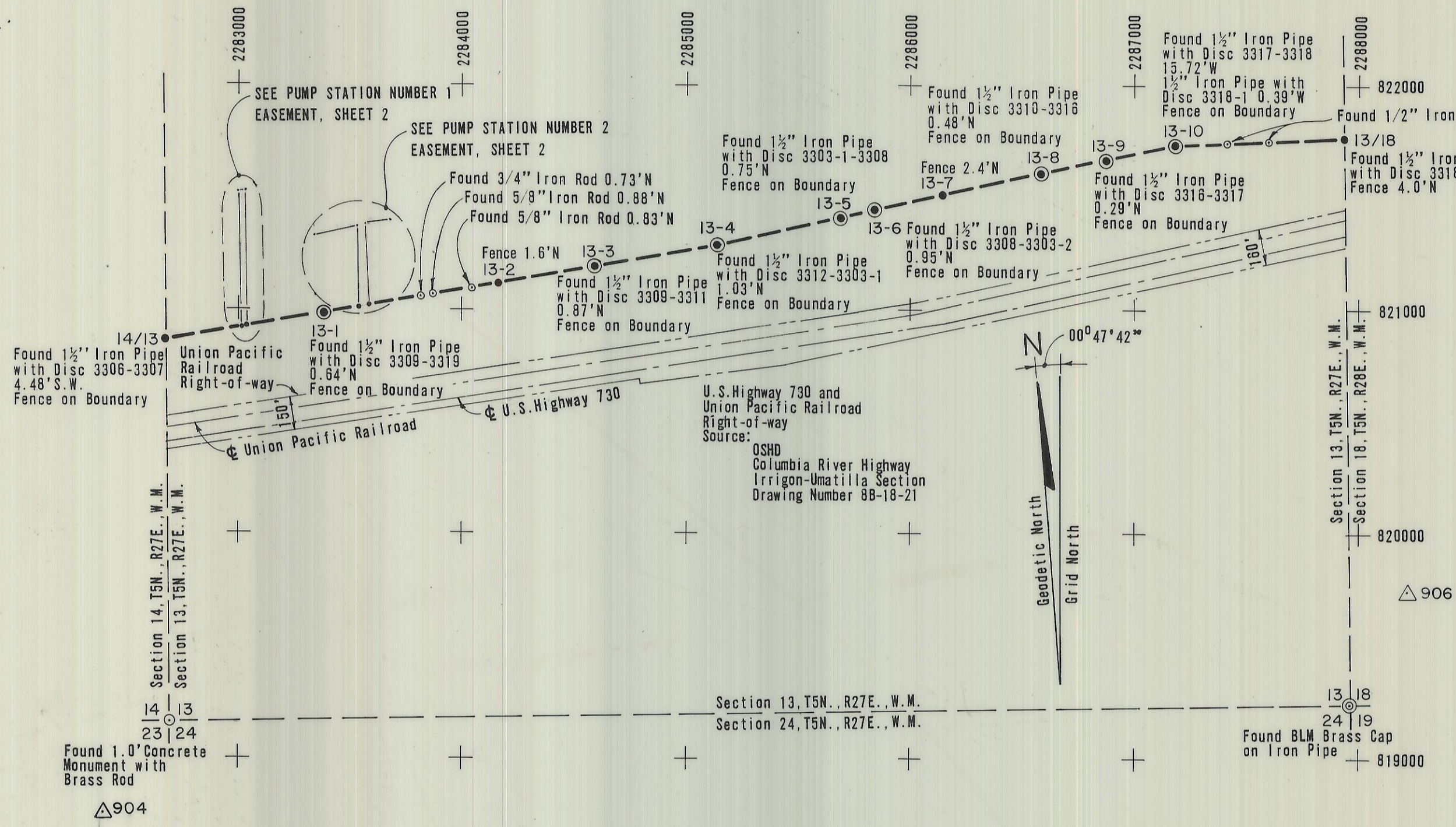


MARK	NORTHING	EASTING	BEARING	DISTANCE	RECOVERY RECORD
<b>Section 13 Boundary</b>					
Point on Section Line 14/13	820857.49	2282676.43	S00°47'15" E	1699.93'	
S.W. Corner	819157.72	2282699.80	N89°04'19" E	5275.58'	
S.E. Corner	819243.16	2287974.69	N00°48'08" W	2525.89'	
Point on Section Line 13/18	821768.81	2287939.32			
<b>Project Boundary</b>					
14/13	820857.49	2282676.43	N80°05'00" E	338.52'	
13A/PS-4	820915.78	2283009.90	N80°05'00" E	25.32'	
13B/PS-1	820920.14	2283034.84	N80°05'00" E	353.53'	
13-1	820981.03	2283383.08	N80°05'00" E	159.47'	
13-1A/PS-1	821008.49	2283540.17	N80°05'08" E	40.38'	
13-1B/PS-2	821015.44	2283579.94	N80°05'00" E	582.79'	
13-2	821115.81	2284154.02	N80°05'00" E	434.85'	
13-3	821190.70	2284582.38	N80°05'00" E	565.05'	
13-4	821288.01	2285138.98	N77°35'00" E	585.34'	
13-5	821409.57	2285691.10	N77°35'00" E	149.19'	
13-6	821441.64	2285836.79	N77°35'00" E	315.48'	
13-7	821509.48	2286144.89	N77°35'00" E	453.41'	
13-8	821606.97	2286587.70	N77°35'00" E	297.23'	
13-9	821670.88	2286877.98	N77°35'00" E	299.27'	
13-10	821735.23	2287170.24	N87°30'00" E	769.81'	
13/18	821768.81	2287939.32			
<b>Pump Station Number 1 Easement (Oregon Potato Inc.)</b>					
13B/PS-1	820920.14	2293034.84	N00°47'15" W	605.00'	
PS-2	821525.09	2283026.52	S89°12'45" W	25.00'	
PS-3	821524.74	2283001.52	S00°47'15" E	609.02'	
13A/PS-4	820915.78	2283009.90	N80°05'00" E	25.32'	
13B/PS-1	820920.14	2283034.84	N80°05'00" E	15.00'	
Witness Corner	820922.73	2283049.61			
<b>Pump Station Number 2 Easement (C &amp; B Livestock)</b>					
13-1A/PS-1	821008.49	2283540.17	N80°05'08" E	40.37'	
13-1B/PS-2	821015.44	2283579.94	N02°01'35" W	361.66'	
PS-3	821376.88	2283567.15	N78°43'35" E	108.48'	
PS-4	821398.08	2283673.54			
PS-5	821525.37	2284312.09	N78°43'35" E	149.99'	
PS-6	821554.69	2284459.18			
13-1A/PS-1	821008.49	2283540.17	N02°01'35" W	360.51'	
PS-8	821368.78	2283527.42	S78°43'35" W	199.99'	
PS-7	821329.68	2283331.29			
PS-8	821368.78	2283527.42	N78°28'33" E	40.55'	
PS-3	821376.88	2283567.15			
<b>Horizontal Control Monument</b>					
904	818754.38	2282401.72			
906	819753.69	2288241.98			



**LEGEND:**

- Set 4-inch cast aluminum monument stamped Corps of Engineers-U.S. Army Project Boundary, Survey Mark.
- ⊙ Held Found Monument Position as Indicated.
- △ Horizontal Control Monument

**NOTE:**  
East and West Section Line Bearings are True North.

SCALE: 1" = 500'  
COORDINATES ARE OREGON, NORTH ZONE  
BEARINGS SHOWN ARE ORIENTED TO GRID.  
GRID FACTOR 0.9999584

**JOHN DAY PROJECT BOUNDARY  
AND PUMP SITES  
UMATILLA AREA  
By CH2M HILL INC.  
For The CORPS OF ENGINEERS  
SECTION 13, T5N., R27E., W.M.  
UMATILLA COUNTY OREGON  
Surveyed March 1979 Sheet 1 of 2**

REGISTERED  
PROFESSIONAL  
LAND SURVEYOR  
*Kenneth R. Wengler*  
OREGON  
JULY 13, 1973  
KENNETH R. WENGLER  
1002

RECEIVED BY  
Umatilla County Surveyors  
Date 4/10/79  
Rec'd By SLB  
No. Q-952-B