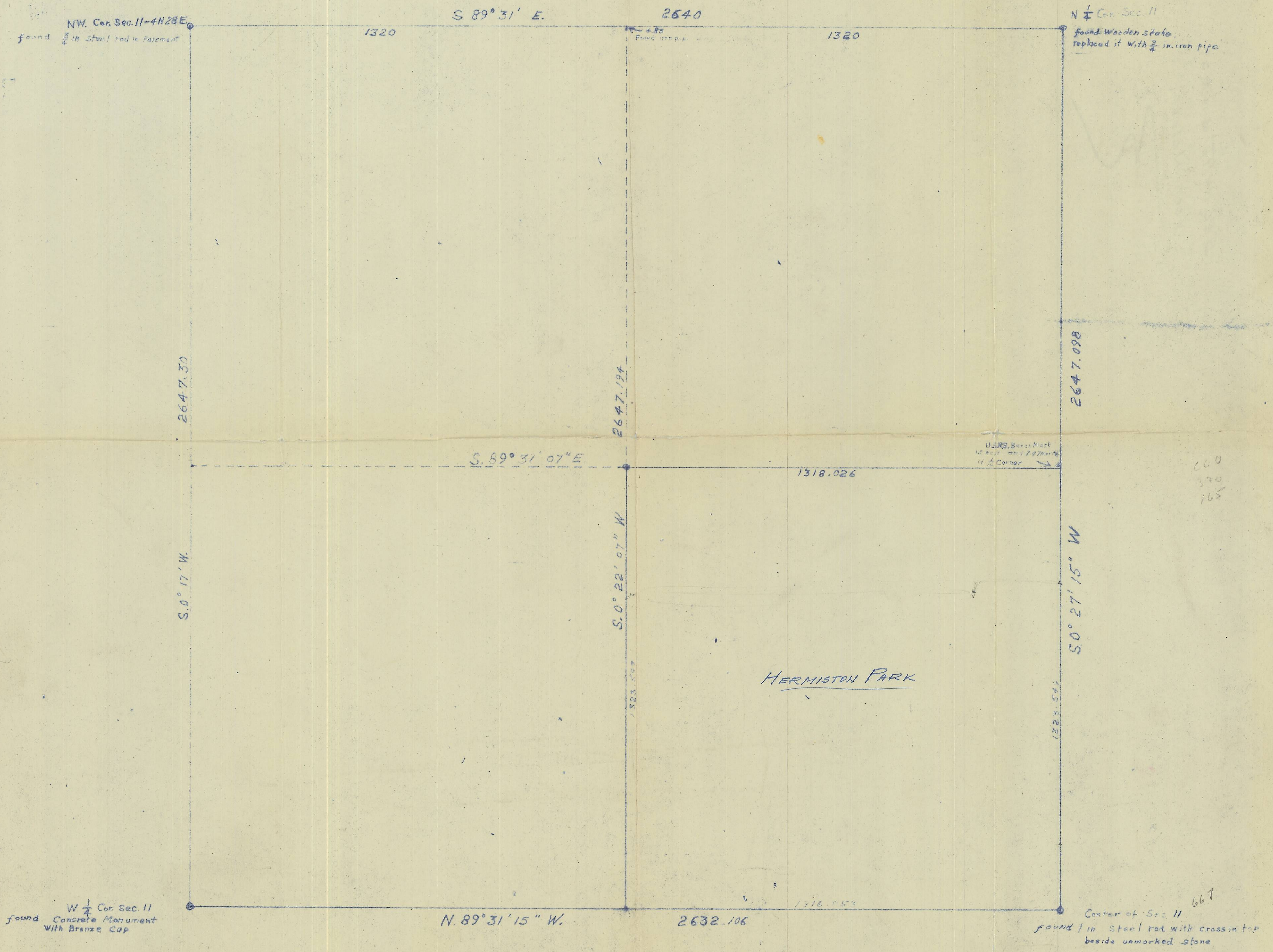


Q-642-B

SUBDIVISION OF NW 1/4 OF SEC. 11, T. 4 N. R. 28 E. WM

Surveyed: May, 1948
Scale: 1 inch = 200 feet

By: G. Vernon Nelson
Reg. Land Surveyor No. 107



NW Cor. Sec. 11-4N28E
found 1/4 in. steel rod in pavement

S. 89° 31' E.

2640

N 1/4 Cor. Sec. 11

found wooden stake
replaced it with 3/4 in. iron pipe

2647.30

2647.194

2647.098

S. 89° 31' 07" E

1318.026

USRS, Bench Mark
at West and 1/4 corner
1/4 corner

S. 0° 17' W

S. 0° 22' 07" W

S. 0° 27' 15" W

HERMISTON PARK

660
370
165

W 1/4 Cor. Sec. 11
found concrete monument
with bronze cap

N. 89° 31' 15" W.

2632.106

Center of Sec. 11
found 1/2 in. steel rod with cross in top
beside unmarked stone

661

Q-642-B
4028 11 B