

(N 0° 38' 30" E) N 0° 05' 30" W
1307.50

1/4 COR. BETWEEN
SECTIONS 15 & 16
T2N R32 EWM



Area = 19.57 Acres m/2

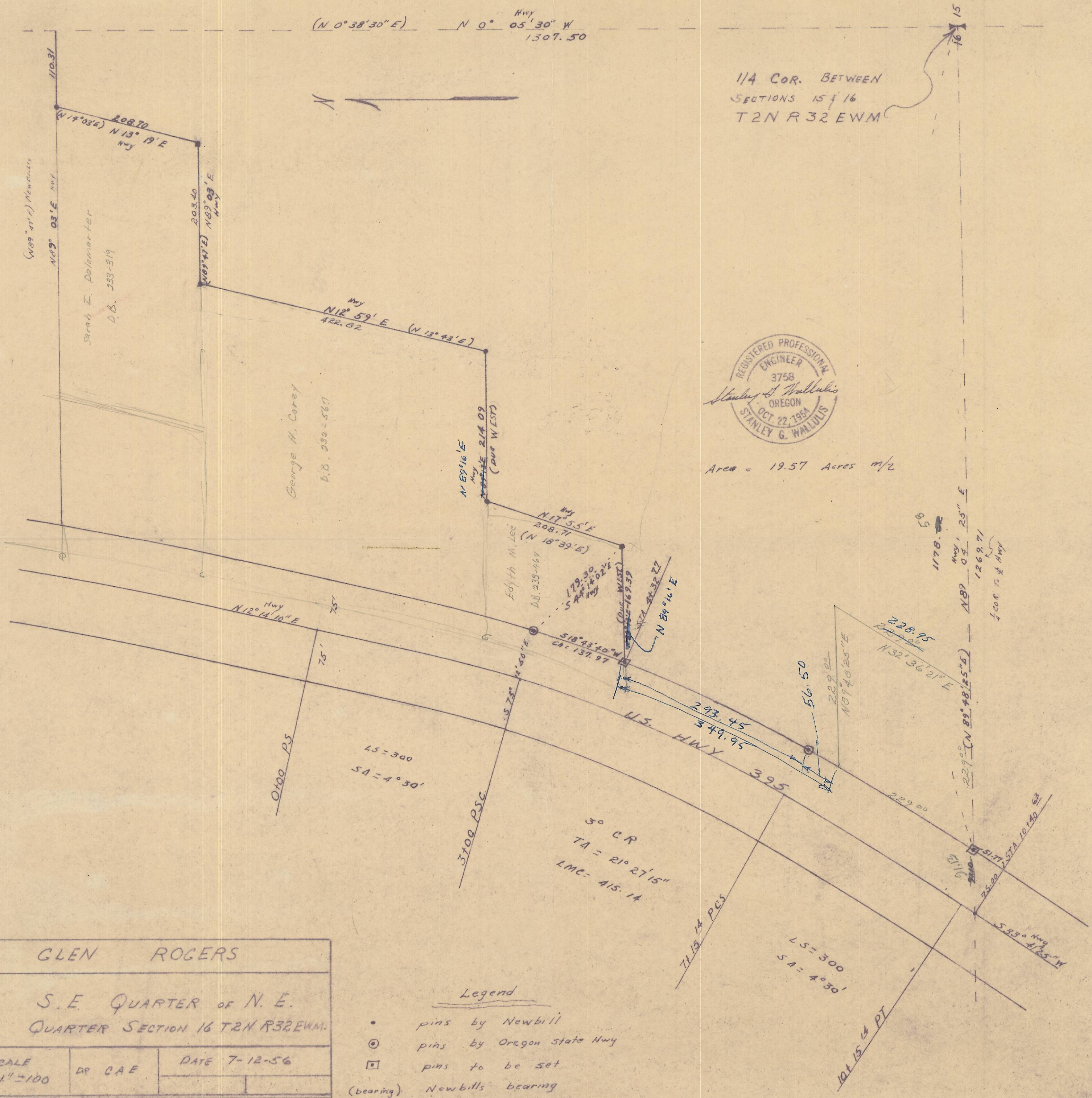
(N 89° 47' E) Newbills
N 82° 03' E HWY
Sarah E. Delamarter
D.B. 233-319

George H. Corey
D.B. 230-567

Elyth M. Lee
D.B. 233-464

GLEN ROGERS	
S.E. QUARTER of N.E. QUARTER SECTION 16 T2N R32 EWM.	
SCALE 1"=100	DR CAE
DATE 7-12-56	
VERNON B. TENNESON	
PENDLETON	ORE.

- Legend
- pins by Newbill
 - ⊙ pins by Oregon state Hwy
 - pins to be set
 - (bearing) Newbills bearing



Q-431-B
DT 1226 B
2N 322116 AD