

B.M. EL. 99.32'

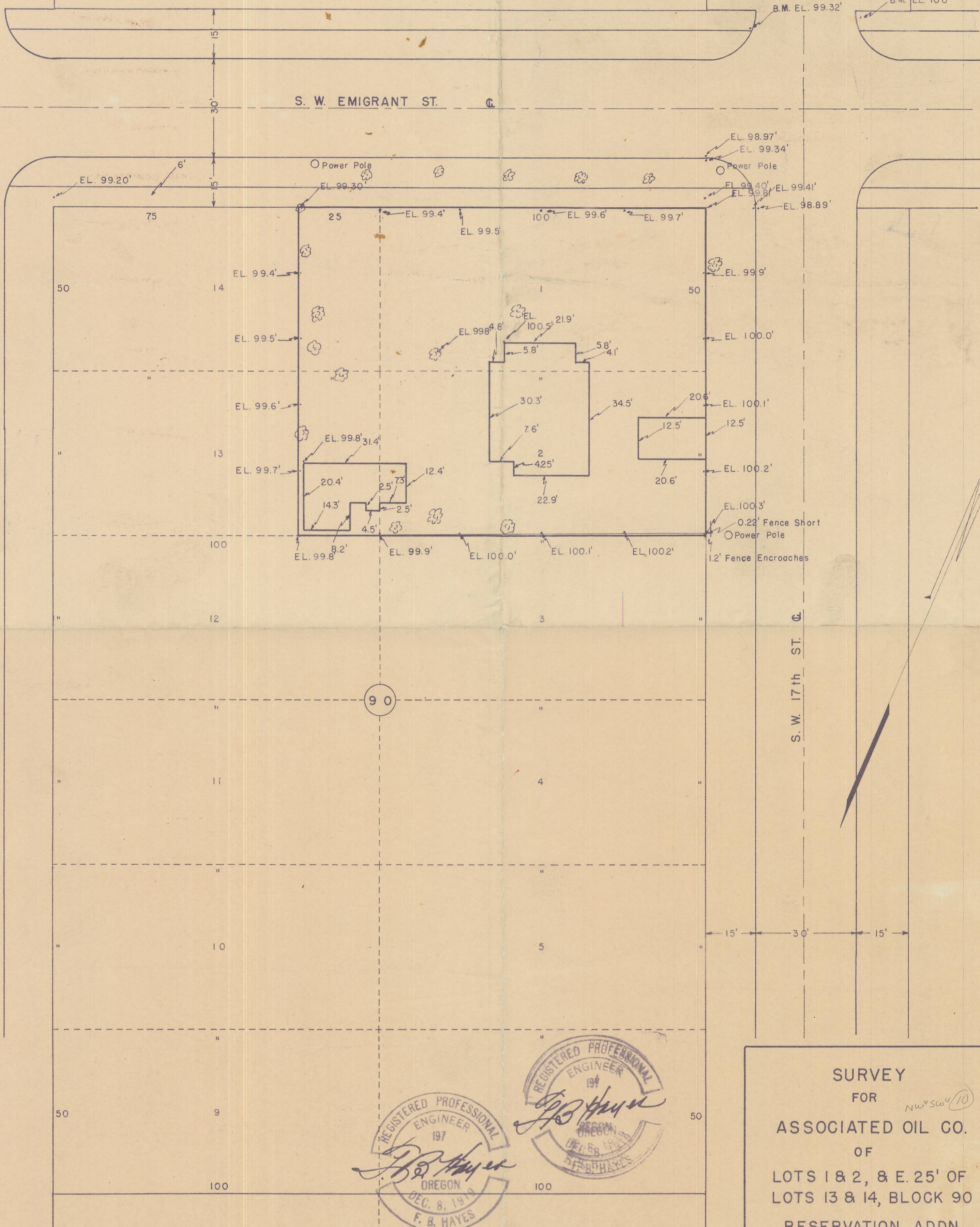
B.M. EL. 100'

S. W. EMIGRANT ST.

S. W. 18th ST.

S. W. 17th ST.

90



REGISTERED PROFESSIONAL  
ENGINEER  
197  
*F. B. Hayes*  
OREGON  
DEC. 8, 1919  
F. B. HAYES

REGISTERED PROFESSIONAL  
ENGINEER  
194  
*F. B. Hayes*  
OREGON  
DEC. 8, 1919  
F. B. HAYES

SURVEY  
FOR *NW 1/4 10*  
ASSOCIATED OIL CO.  
OF  
LOTS 1 & 2, & E. 25' OF  
LOTS 13 & 14, BLOCK 90  
RESERVATION ADDN.  
PENDLETON, ORE.  
*Q-253-B*  
20 32 10 CA

*Q-253-B*

*DR 17*