

RECORD OF SURVEY
FOR
ROLAND HAERTL
OF A TRACT OF LAND IN SECTION 15, T4 N, R 28 E, W.M.

SCALE: 1" = 100'

BASIS OF BEARING:

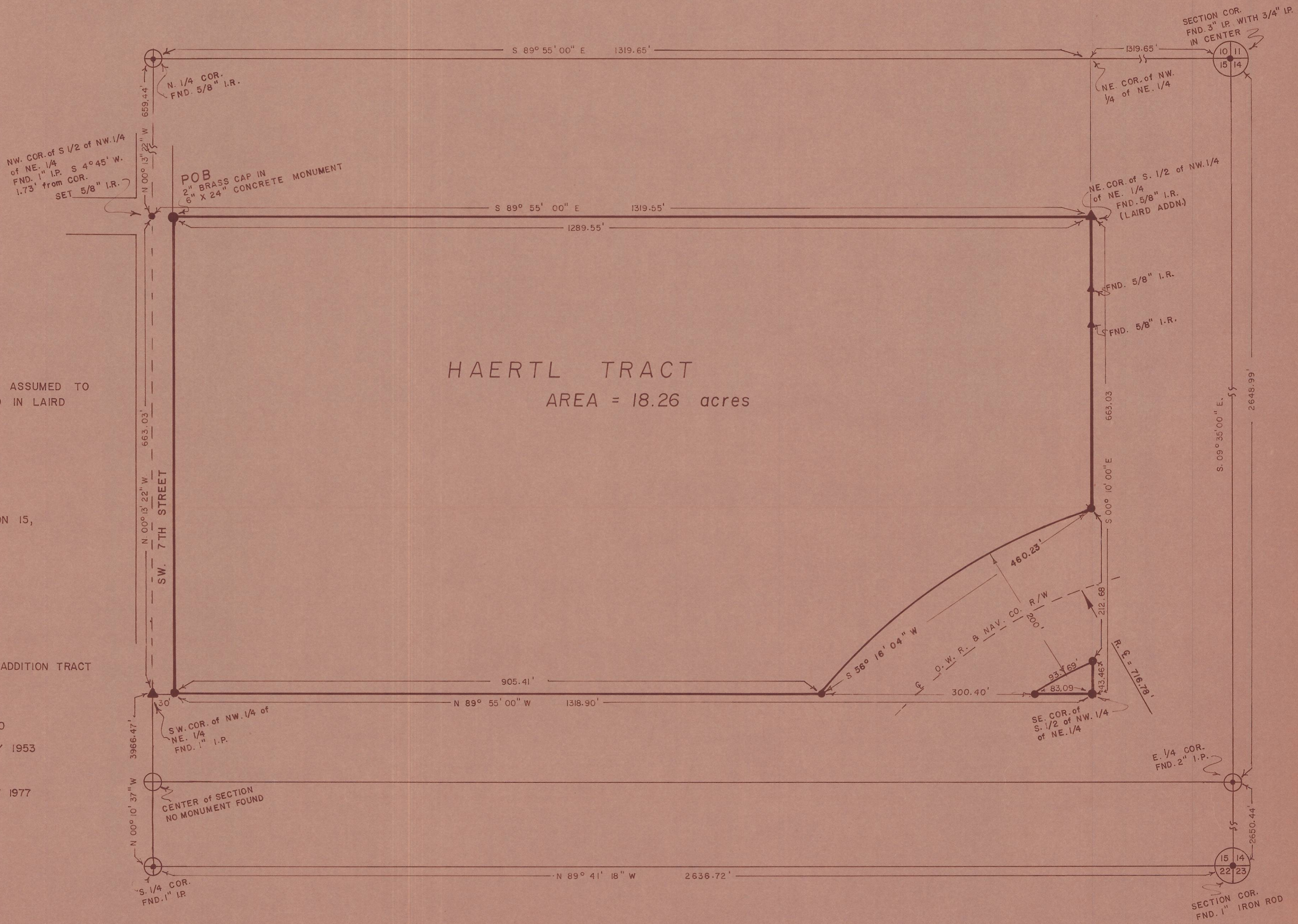
NORTH LINE OF NE 1/4 OF SECTION 15 ASSUMED TO BEAR S. 89° 55' 00" E. AS DETERMINED IN LAIRD ADDITION PLAT

DESCRIPTION

THE S. 1/2 of NW. 1/4 of NE. 1/4 of SECTION 15, T 4 N, R 28 E, W.M.

REFERENCES

1. TELEK ENGINEERING SURVEY OF TURNER ADDITION TRACT NOVEMBER 1975
2. LAIRD ADDITION PLAT, MARCH 1952
3. BORTHWICK ADDITION PLAT, AUGUST 1950
4. BORTHWICK SECOND ADDITION PLAT, MAY 1953
5. BERGS ADDITION PLAT, JUNE 1955
6. WHEATLAND WEST ADDITION PLAT, JULY 1977



REGISTERED PROFESSIONAL LAND SURVEYOR

Thomas J. Lajer
OREGON
SEPT. 13 1977
THOMAS J. LAJER
124

RECORD OF SURVEY	
DATE: 10-28-77	TELEK ENGINEERING 540 SW 11TH STREET HERMISTON, OREGON