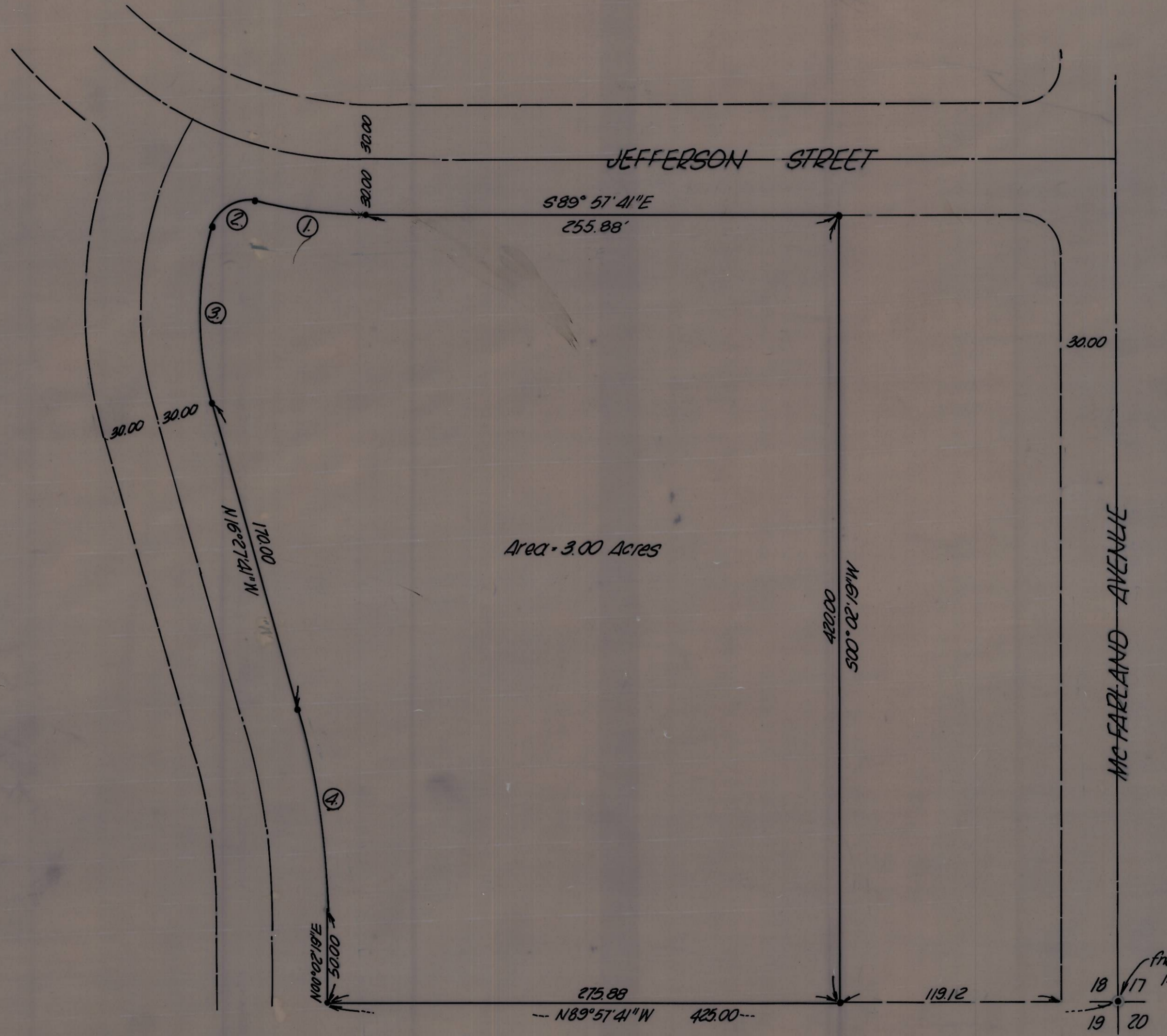


SITE MAP  
N.T.S.

Curve Data

- ① R = 235.00  
L = 59.94  
Ch. = 59.78  
Ch. brg. = S82°39'15"E
- ② R = 20.00  
L = 30.65  
Ch. = 27.74  
Ch. brg. = N60°44'23"E
- ③ R = 165.00  
L = 95.87  
Ch. = 94.52  
Ch. brg. = N00°10'59"E
- ④ R = 375.00  
L = 107.99  
Ch. = 107.62  
Ch. brg. = N08°12'41"W



McFARLAND  
"Mc FARLAND  
ADDITION"

Found brass disc  
in 6"x6" conc. mon.

• - denotes 5/8 in. iron pin set

0-19

<b>KRUMBEIN ENGINEERING CO</b> ENGINEERS - SURVEYORS - PLANNERS 221 S. Main, Pendleton, Oregon	11.50'
	DATE FEB. 14, 1978
Survey for Bill McClanahan MORMON CHURCH SITE SE 1/4, SE 1/4, Sec 18, T5N, R28E, W1W, Umatilla, Oregon	DRAWN BY P.L.S.
	CHECKED BY D.H.L.
	DRWG. NO. #78-B.C.

B

10610 78-17