

T. 1 S., R. 36 E., W. M.

ENGINEER'S STATEMENT

I, JAMES D. HANLEY, A REGISTERED ENGINEER IN THE STATE OF OREGON, HEREBY CERTIFY THAT THIS PLAT AND THE NOTES HEREON, OR ATTACHED, ARE A CORRECT REPRESENTATION OF A SURVEY PERFORMED BY ME DURING OCTOBER, 1975, AND JUNE, 1976, FOR THE U.S. FOREST SERVICE, IN ACCORDANCE WITH THE STATUTES OF THE STATE OF OREGON AND THE ARTICLES OF MY CONTRACT.

James D. Hanley
R.P.E. 2808

LEGEND

- FOUND BRASS CAP MONUMENT.
- ⊙ FOUND ORIGINAL G.L.O. CORNER;
SET 2 1/2" BRASS CAP ON 2"x3" IRON PIPE.
- ⊙ SET 2 1/2" BRASS CAP ON 2"x3" IRON PIPE
AT PROPORTIONATE DISTANCE.
- () G.L.O. RECORD BEARING AND DISTANCE.

NOTE:

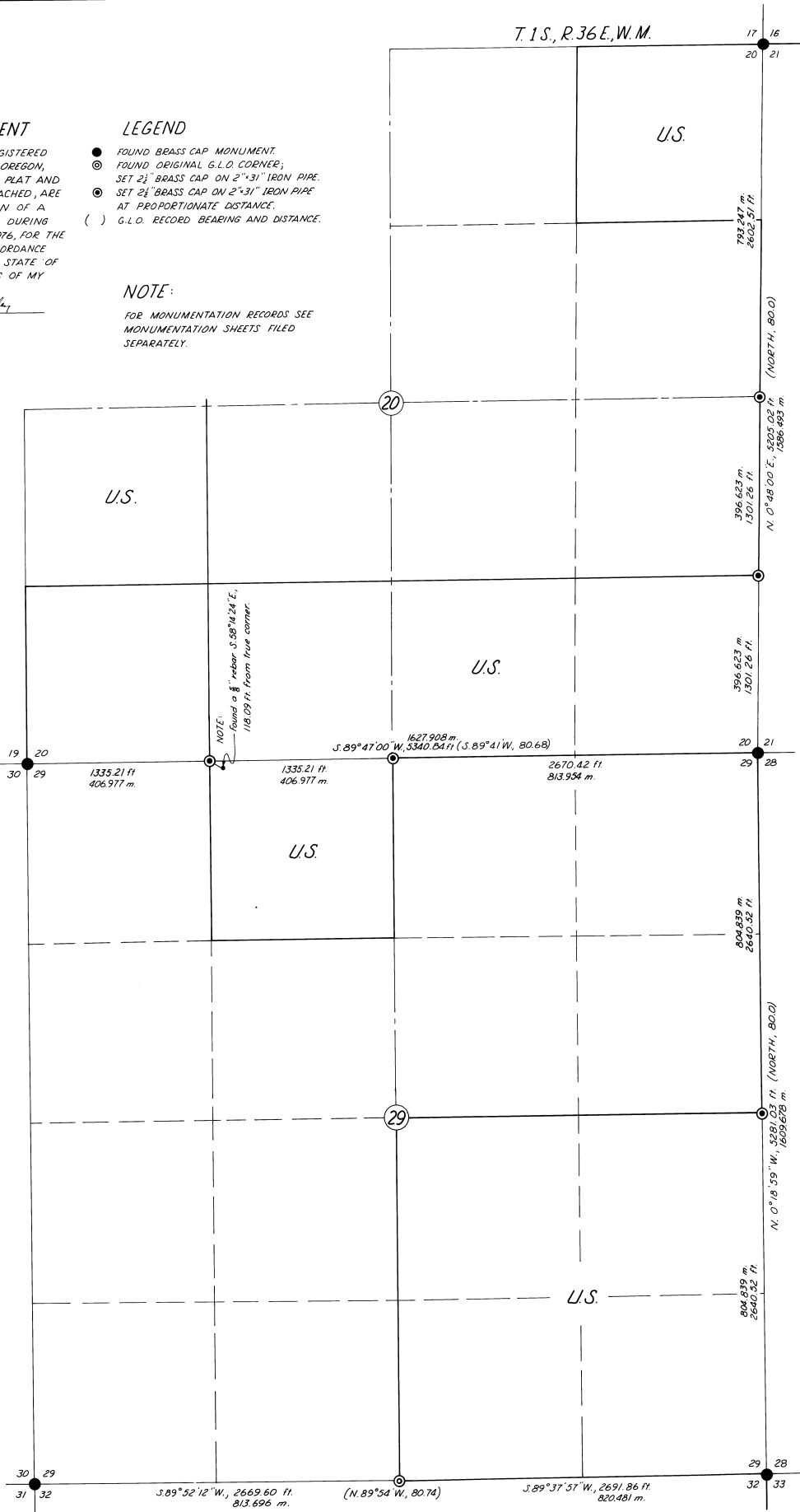
FOR MONUMENTATION RECORDS SEE MONUMENTATION SHEETS FILED SEPARATELY.

MERIDIAN BY SOLAR OBSERVATION

TRANSIT STA. NO. 12 -
N 11° 58' 42" W, 1822.43 ft.
FROM NE COR. SEC. 29
OCTOBER 28, 1975
LATITUDE 45° 27' 47"
DECLINATION 13° 04' 37" S.
VERTICAL ANGLE 25° 31' 37"
MEAN DECLINATION 21° 30' E.

TRANSIT STA. NO. 55 -
S 52° 01' 56" W, 1212.15 ft.
FROM NE COR. SEC. 34
NOVEMBER 3, 1975
LATITUDE 45° 26' 31"
DECLINATION 15° 01' 50" S.
VERTICAL ANGLE 26° 24' 06"
MEAN DECLINATION 21° E.

NOTE:
found a 8" rebar S. 58° W. 24' E.,
118.09 ft. from true corner.



DESCRIPTIONS OF U.S. GOVERNMENT LANDS

SECTION 20	SECTION 29
NE 1/4 NE 1/4	ALL SE 1/4
S 1/4 SE 1/4	NE 1/4 NW 1/4
SE 1/4 SW 1/4	
NW 1/4 SW 1/4	
W 1/2 NW 1/4	

**PLAT OF SURVEY
FOR U.S. FOREST SERVICE
CONTRACT NO. 004971N**

SCALE 1" = 500 FT.
OCT. 14, 1975 - JUNE 15, 1976



L-57-11